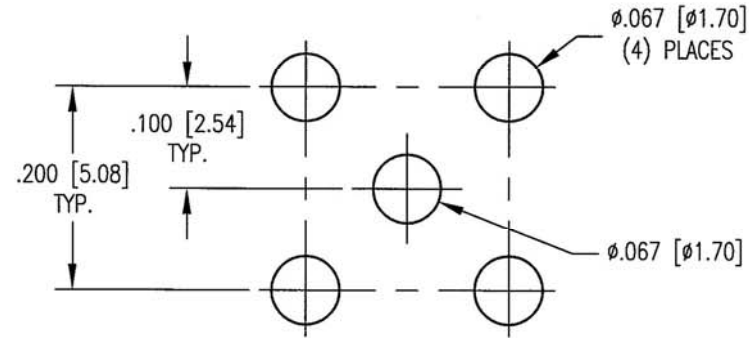
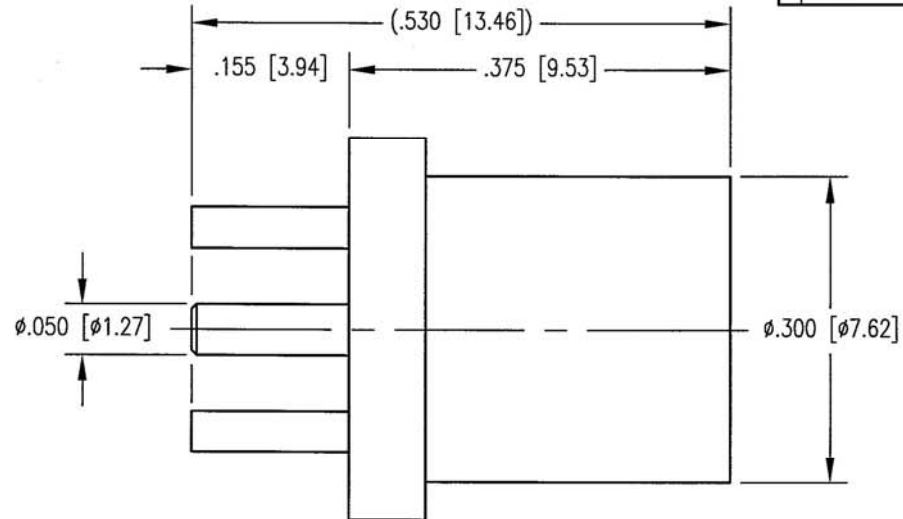
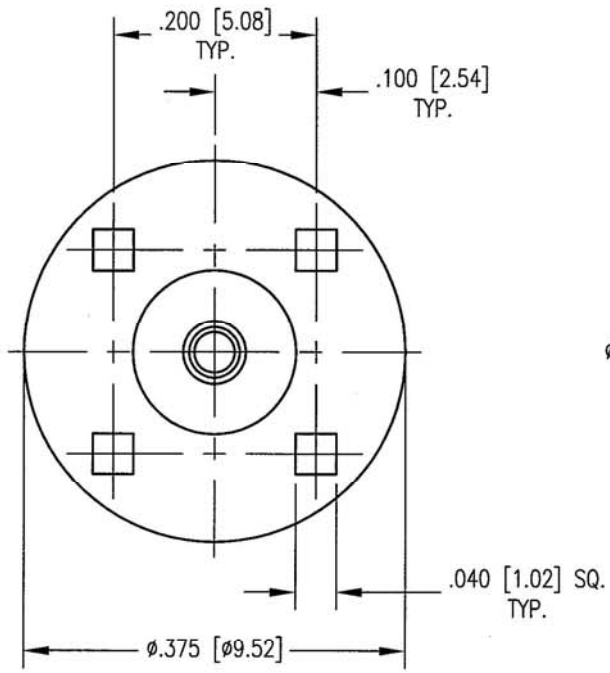


DWG. NO. 361-060-0040H

REV	DESCRIPTION	BY DATE	APPD
A	RELEASED PER ECR 7417	7/22/02	<i>[Signature]</i>



RECOMMENDED MOUNTING HOLE

- NOTES:
- MATERIALS:  
 CONTACTS: COPPER ALLOY  
 INSULATOR: TEFLON PER ASTM D1710  
 ALL OTHER METAL PARTS: BRASS PER ASTM B16
  - FINISH:  
 CONTACTS AND SHROUD: .000030 MIN. GOLD PER MIL-G-45204 OVER  
 .000050 MIN. NICKEL PER QQ-N-290  
 BODY: .000015 MIN. GOLD PER MIL-G-45204 OVER  
 .000050 MIN. NICKEL PER QQ-N-290

PER ASME Y14.5M-1994 UNLESS OTHERWISE SPECIFIED: DIMENSIONS ARE IN INCHES (MM)			
TOLERANCES: DECIMALS .XX ± .01 [0.254] .XXX ± .005 [0.127] ANGLES ± 2° SCALE: 6:1			
CUSTOMER DRAWING		TITLE BMA STRAIGHT PCB MOUNT RECEPTACLE	
DRAWN JED	DATE 7/22/02	CHECKED <i>[Signature]</i>	DATE 7-26-02
APPROVED <i>[Signature]</i>	DATE APPROVED 7/27/02	DATE 7/27/02	REV. A
361-060-0040H			SH. OF REV. 1 1 A