

PLEASE CHECK WWW.MOLEX.COM FOR LATEST PART INFORMATION

Part Number: [0352082010](#)
Status: **Active**
Description: 5.00mm (.197") Pitch Wire-to -Board Header, Vertical, 1.78mm (.070") Tab, 20 Circuits

Documents:

[3D Model](#) [RoHS Certificate of Compliance \(PDF\)](#)
[Drawing \(PDF\)](#)

General

Product Family	PCB Headers
Series	35208
Application	Wire-to-Board
Product Name	N/A

Physical

Breakaway	No
Circuits (Loaded)	20
Circuits (maximum)	20
Color - Resin	Natural
Durability (mating cycles max)	30
First Mate / Last Break	No
Glow-Wire Compliant	No
Guide to Mating Part	No
Keying to Mating Part	None
Lock to Mating Part	Yes
Material - Plating Mating	Tin
Material - Plating Termination	Tin
Material - Resin	Nylon
Number of Rows	2
Orientation	Vertical
PCB Locator	Yes
PCB Retention	Yes
PCB Thickness Recommended (in)	0.062 In
PCB Thickness Recommended (mm)	1.60 mm
Packaging Type	Bag
Pitch - Mating Interface (in)	0.197 In, 0.268 In
Pitch - Mating Interface (mm)	5.00 mm, 6.80 mm
Plating min: Mating (µin)	200
Plating min: Mating (µm)	5
Plating min: Termination (µin)	200
Plating min: Termination (µm)	5
Polarized to PCB	No
Shrouded	Partial
Stackable	No
Temperature Range - Operating	-40°C to +105°C
Termination Interface: Style	Through Hole

Electrical

Current - Maximum per Contact	5A
Voltage - Maximum	300V

Material Info

Reference - Drawing Numbers

Sales Drawing	SDA-35208-****
---------------	----------------

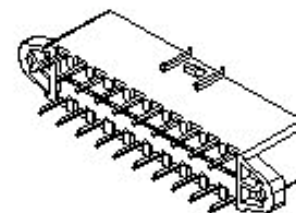


image - Reference only

Series

EU RoHS

ELV and RoHS Compliant
REACH SVHC
 Not Reviewed
Halogen-Free Status
 Not Reviewed

China RoHS



Need more information on product environmental compliance?

Email productcompliance@molex.com
 For a multiple part number RoHS Certificate of Compliance, [click here](#)

Please visit the [Contact Us](#) section for any non-product compliance questions.

Search Parts in this Series

[35208Series](#)

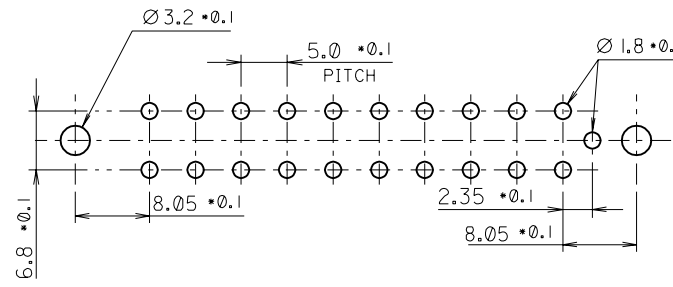
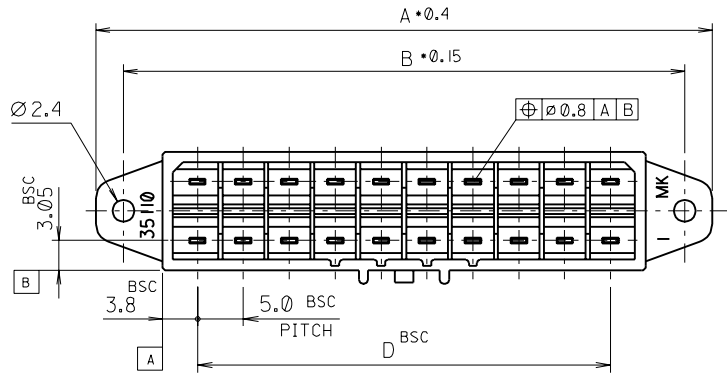
Mates With

[35109 Wire-to-Board Housing](#)

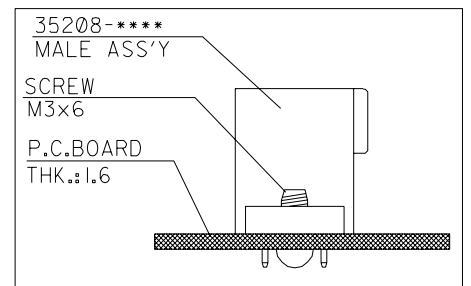
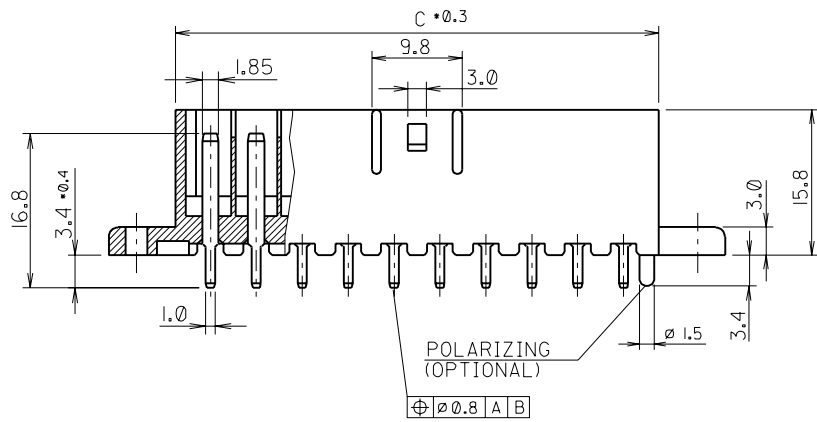
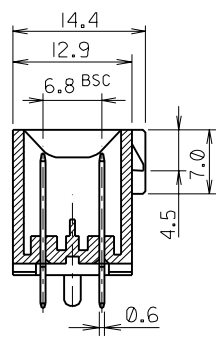
This document was generated on 04/13/2010

PLEASE CHECK WWW.MOLEX.COM FOR LATEST PART INFORMATION

PROJECT NO. METER CONN. SIMILAR ITEM EDP NO. 35208-**** ENG. NO. SD 35208-**** DO NOT SCALE DRAWING DIMENSION IN METRIC



RECOMMENDED P.C BOARD HOLE DIMENSION



NOTE

1. MATERIAL : HOUSING (NYLON 66 UL94V-2)
PIN (BRASS (CDA 260) H)
2. TO BE MATED WITH FEMALE HOUSING : 35109-***10
3. APPLIED SCREW : M3x6

45.0	52.6	61.1	67.1	35208-2010	35208-2010	NO	20
				35208-2000	35208-2000	YES	20
35.0	42.6	51.1	57.1	35208-1610	35208-1610	NO	16
				35208-1600	35208-1600	YES	16
D	C	B	A	EDP NO.	ENG NO.	POLARIZING	CKT.

LTR	REVISION RECORD	ECN	DR. CHK	DATE	ASS'Y PART		QTY/REEL OR PACK	SURFACE AREA	MATERIAL	SEE NOTE	WIRE RANGE	GENERAL TOLERANCES		MOLEX MOLEX-KOREA CO.,LTD.
					DESCRIPTION	ENG.NO.						DIM. :	ANGLE :	
E	REVISED	96 084		96 7/23							AWG:	DIM. :	0.3	REVISE ONLY ON CAD SYSTEM
D	REVISED	96 071		96 7/05							MM ² :	ANGLE :	1°	
C	REVISED													
B	RELEASED	92 047		92 11/12			DIE NO.	LAYOUT NO.	■♥: CRITICAL	☒: MAJOR				
A	NEW RELEASED	91 0020		91 10/25					□: MINOR	(): REFERENCE				
I	RELEASED			91 5/28			WIRE CRIMP WIDTH	INS. CRIMP WIDTH			INSULATION RANGE	TITLE:	METER CONN. MALE ASS'Y	
0	TEMPORARY RELEASED			91 2/12					DRAWN BY	H.S.SHIN	CHK'D BY	ENG.NO.	SD 35208-****	REV
					DIE FEED	APPL FEED	WBDW	IBDW	APP'D BY		SCALE			