



**Data Sheet**



Product Category: IF SAW Filter

Part Number  
820-IF70.0M-S

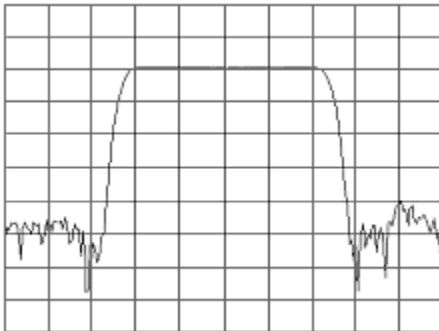
Package  
20.2 x 12.6 Thru Hole

Application  
Base Station & Repeater

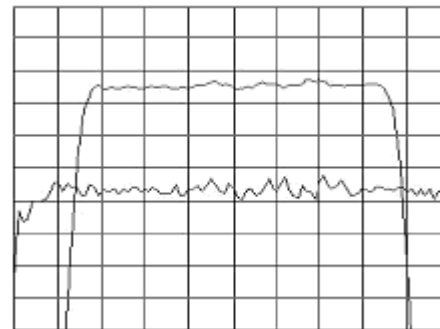
Last Modified  
May 02 2003

TYPE :  
70.0 MHz Bandpass Filter  
4.4 MHz Bandwidth

PART NUMBER :  
**820-IF70.0M-S**



Horizontal : 1.0 MHz/Div  
Vertical : 10 dB/Div



Horizontal : 0.6 MHz/Div  
Vertical : 1 dB/Div  
Vertical : 100 ns/Div

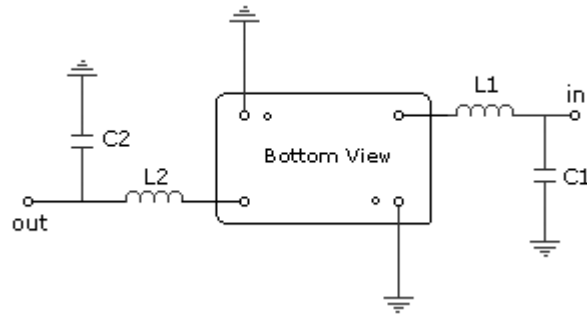
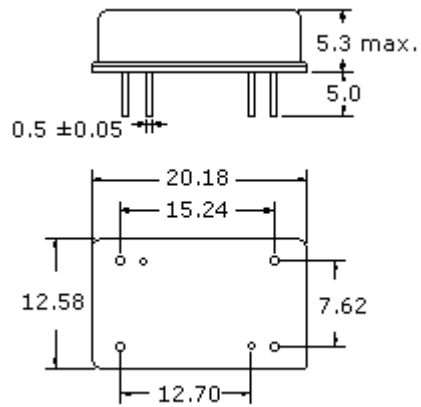
**OPERATING CONDITIONS / ELECTRICAL CHARACTERISTICS**

PARAMETERS	Minimum	Typical	Maximum	Units
<b>Center Frequency</b>	69.90	70.00	70.10	MHz
<b>Insertion Loss</b>	-	21.5	24.0	dB
<b>1dB Bandwidth</b>	4.0	4.3	-	MHz
<b>3dB Bandwidth</b>	4.4	4.5	-	MHz
<b>40dB Bandwidth</b>	-	5.4	5.6	MHz
<b>Passband Ripple</b>	-	0.5	0.8	dB
<b>Group Delay Variation</b>	-	100	150	nsec
<b>Absolute Delay</b>	-	2.44	-	µsec
<b>Ultimate Rejection</b>	50	55	-	dB
<b>Substrate Material</b>	-	112 LT	-	-
<b>Ambient Temperature</b>	-	25	-	°C

\* Custom SAW IF Filters available. Contact Oscilent for assistance.

**PACKAGE OUTLINE** (mm)

**TEST FIXTURE**



L1 = 68nH      C1 = 100pF  
 L2 = 90nH      C2 = 82pF  
 Source/Load Impedance = 50 ohms

**Oscilent Corporation** - CALL **949.252.0522**

17962 Sky Park Circle , Building D , Irvine , CA 92614 , USA  
 Fax: 949.252.0599 , E-Mail: Sales@Oscilent.com

**Part No.:** 820-IF70.0M-S