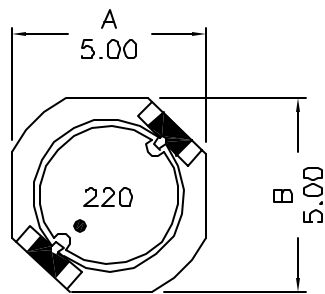
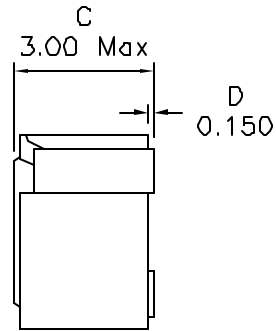


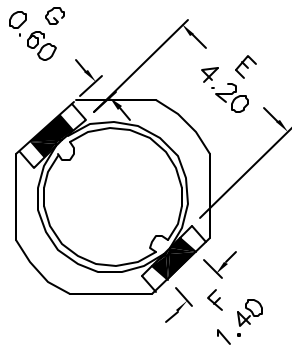
## 1. Mechanical Dimensions:



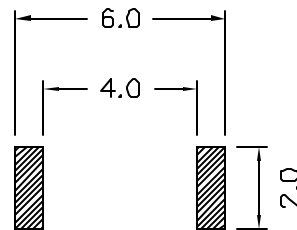
(TOP VIEW)



(SIDE VIEW)

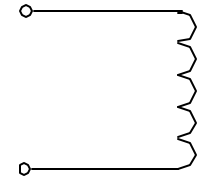


(BOTTOM VIEW)



Suggested Pad Layout

## 2. Schematic:



## 3. Electrical Specification:

Inductance: 22uH±20% @100KHz 0.1V

DCR: 208mOhms Max

Isat: 0.86Adc Max (Based on OCL drop by 30%)

Irms: 0.81A Max (Based on 40% Temp Rise)

### Notes:

1. Solderability: Leads shall meet MIL-STD-202G, Method 208H for solderability.
2. Flammability: UL94V-0
3. ASTM oxygen index: > 28%
4. Insulation System: Class F 155°C, UL file E151556
5. Operating Temperature Range: All listed parameters are to be within tolerance from -40°C to +85°C
6. Storage Temperature Range: -55°C to +125°C
7. Aqueous wash compatible
8. SMD Lead Coplanarity: ±0.004"(0.102mm)
9. Electrical and mechanical specifications 100% tested
10. RoHS Compliant Component

DOC REV: A/1

**PROPRIETARY** Document is the property of XFMRS Group & is not allowed to be duplicated without authorization.

<b>XFMRS Inc.</b>	Title: <b>INDUCTOR</b>		
	UNLESS OTHERWISE SPECIFIED TOLERANCES: .xx ±0.25 Dimensions in MM	P/N: XF505030SH-220M	REV. A
SHEET 1 OF 1	DWN.	Kang Chen	Mar-31-06
	CHK.	YK Liao	Mar-31-06
	APP.	MS	Mar-31-06