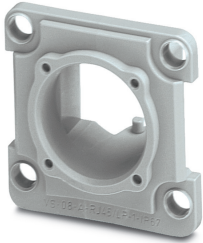


## Panel mounting frames - VS-08-A-RJ45/LP-1-IP67 - 1689446


Please be informed that the data shown in this PDF Document is generated from our Online Catalog. Please find the complete data in the user's documentation. Our General Terms of Use for Downloads are valid (<http://phoenixcontact.com/download>)



RJ45 panel mounting frame, IP67, for PCB connection, for square panel cutout, with grommet, without mounting screws, color: gray



### Key Commercial Data

|              |   |
|--------------|---|
| Packing unit | 5 pc  |
| GTIN         | <br>4 017918 910341 |
| GTIN         | 4017918910341   |

### Technical data

#### Mechanical characteristics

|  |        |
|--|--------|
| Number of slots                        | 1      |
| Degree of pollution                    | 2      |
| Weight                                 | 5.01 g |
| Flammability rating according to UL 94 | V0     |

#### Ambient conditions

|                                 |                  |
|---------------------------------|------------------|
| Ambient temperature (operation) | -40 °C ... 80 °C |
|---------------------------------|------------------|

#### Material data

|                  |         |
|------------------|---------|
| Housing material | PA      |
| Width            | 32.5 mm |
| Height           | 32.5 mm |
| Depth            | 20 mm   |
| Housing material | Plastic |

#### Electrical characteristics

|                     |   |
|---------------------|---|
| Degree of pollution | 2 |
|---------------------|---|

#### Standards and Regulations

# Panel mounting frames - VS-08-A-RJ45/LP-1-IP67 - 1689446

## Technical data

### Standards and Regulations

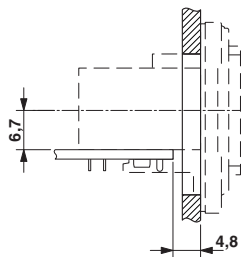
|  |    |
|--|----|
| Flammability rating according to UL 94 | V0 |
|--|----|

### Environmental Product Compliance

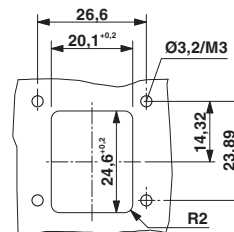
|            |   |
|------------|---|
| China RoHS | Environmentally friendly use period: unlimited = EFUP-e |
|            | No hazardous substances above threshold values          |

## Drawings

Dimensional drawing

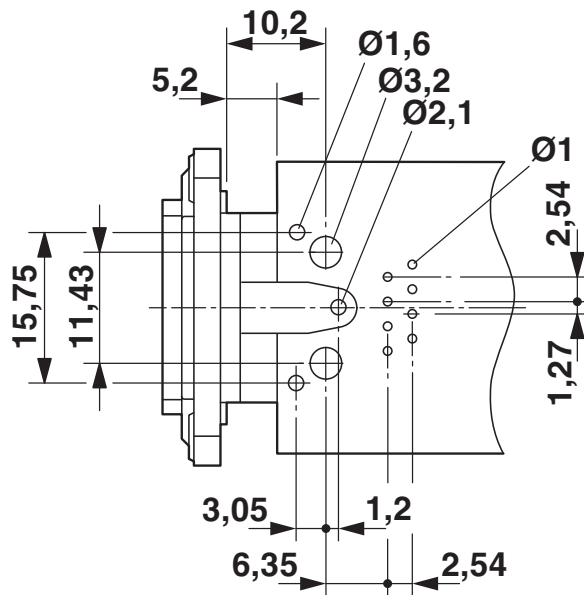


Dimensional drawing



Mounting cutout

Drilling diagram



Drilling plan for VS-08-BU-RJ45-6/LH-1

## Classifications

eCl@ss

|               |          |
|---------------|----------|
| eCl@ss 10.0.1 | 27440210 |
|---------------|----------|

## Panel mounting frames - VS-08-A-RJ45/LP-1-IP67 - 1689446

### Classifications

#### eCl@ss

|             |          |
|-------------|----------|
| eCl@ss 11.0 | 27440210 |
| eCl@ss 4.0  | 27260700 |
| eCl@ss 4.1  | 27260700 |
| eCl@ss 5.0  | 27260700 |
| eCl@ss 5.1  | 27260700 |
| eCl@ss 6.0  | 27261200 |
| eCl@ss 7.0  | 27440210 |
| eCl@ss 9.0  | 27440210 |

#### ETIM

|          |          |
|----------|----------|
| ETIM 2.0 | EC000764 |
| ETIM 3.0 | EC001121 |
| ETIM 4.0 | EC002310 |
| ETIM 6.0 | EC002310 |
| ETIM 7.0 | EC002310 |

#### UNSPSC

|               |          |
|---------------|----------|
| UNSPSC 6.01   | 31261501 |
| UNSPSC 7.0901 | 31261501 |
| UNSPSC 11     | 31261501 |
| UNSPSC 12.01  | 31261501 |
| UNSPSC 13.2   | 39121421 |
| UNSPSC 18.0   | 39121421 |
| UNSPSC 19.0   | 39121421 |
| UNSPSC 20.0   | 39121421 |
| UNSPSC 21.0   | 39121421 |

### Approvals

#### Approvals

---

Approvals

EAC

---

Ex Approvals

---

#### Approval details

## Panel mounting frames - VS-08-A-RJ45/LP-1-IP67 - 1689446

### Approvals

EAC



B.01687

### Accessories

#### Accessories

#### Female insert

RJ45 PCB connectors - VS-08-BU-RJ45-6/LH-1 - 1653087



RJ45 PCB connectors, type: RJ45, degree of protection: IP20, number of positions: 8, 1 Gbps, CAT5 (IEC 11801:2002), connection method: Wave soldering contacts

#### Protective cover

Protective covers - VS-08-SD - 1689200



Protective cover, IP67, tall design

Protective covers - VS-08-SD-F - 1652606



Protective cover, IP67, flat design, to cover the contact insert in the panel mounting frame, color: gray

Phoenix Contact 2021 © - all rights reserved  
<http://www.phoenixcontact.com>

PHOENIX CONTACT GmbH & Co. KG  
Flachsmarktstr. 8  
32825 Blomberg  
Germany  
Tel. +49 5235 300  
Fax +49 5235 3 41200  
<http://www.phoenixcontact.com>