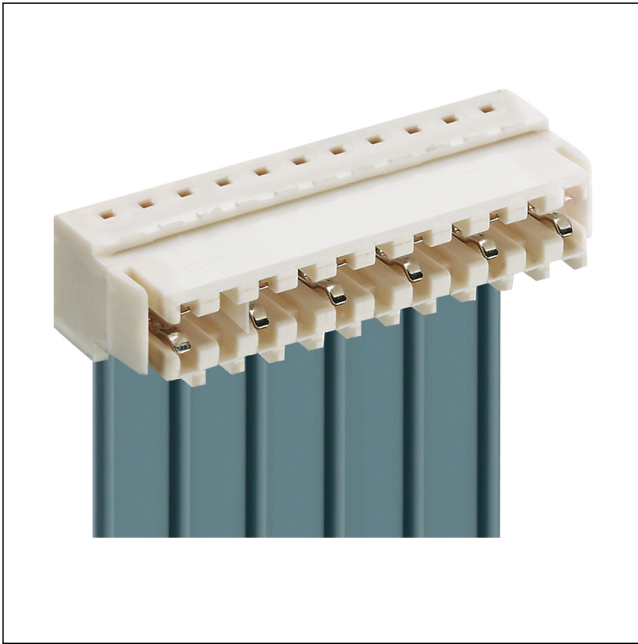


35

3513-2

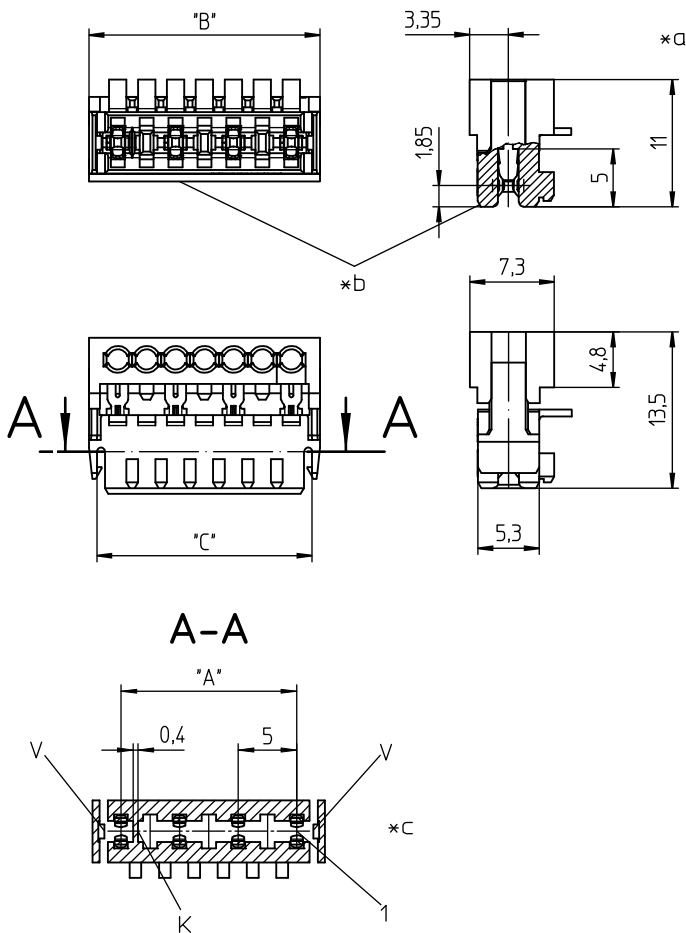
RAST 2.5 connectors, pitch 2.5/5.0 mm



RAST 2.5 connector for direct mating, insulation displacement technology (IDT), with locking on printed circuit board by means of lateral locking hooks, with keying rib, 3513-2: for ribbon cable contact pitch 5.0 mm

Approvals:





Environmental conditions

Temperature range -40 °C/+130 °C¹

¹ upper limit temperature (insulating body) RTI (electrical) of the UL Yellow Card

Materials

Insulating body PBT, V-0 according to UL94 – 3513-2 (S...V...)
PA, V-2 according to UL94 – 3513-2 M12(S...V...)¹

Contact spring CuSn, tin-plated – 3513-2 (M...S...)
CuSn, tin-plated (Sn/Ag), 2-9 poles – 3513-2 (M...S...)/V03
CuSn, pre-nickel and gold-plated – 3513-2 (M...S...)/V102

¹ M12: component glow wire resistant (GWT 750 °C), testing acc. to IEC 60695-2-11, assessment acc. to IEC 60335-1 (flame < 2 s)

Mechanical data

Mating with printed circuit board 1.5 ± 0.14 mm

Insertion force/contact ≤ 4,0 N¹

Withdrawal force/contact ≥ 0,5 N¹

Retaining force/locking ≥ 6,0 N²

Keying proposals at www.lumberg.com 

¹ measured with a polished steel pin, nominal thickness 1.5 mm

² measured with a polished steel gauge, nominal thickness 1.5 mm

Connectable conductors for IDT area

Construction discrete conductor, flat cable 2.5 mm

Section min. 0,14 mm²

Section max. 0,38 mm²

Insulation diameter ≤ 1,6 mm

Approved cables at www.lumberg.com 

Electrical data (at T_{amb} 20 °C)

Contact resistance ≤ 5 mΩ

Rated current 4 A (T_U> 60 °C)
2 A (T_U> 100 °C)

Rated voltage 250 V AC

Material group IIIa (IEC)/2 (UL) (CTI ≥ 250)

Creepage distance 3,1 mm

Clearance 3,1 mm

Insulation resistance > 1 GΩ

Designation	Pole Number	PU (Pieces)	MDQ (Pieces)	Dimensions			
				A (mm)	B (mm)	C (mm)	D (mm)
3513-2 02	2	3600	3600	5.0	9.9	8.6	8.5
3513-2 03	3	2250	4500	10.0	14.9	13.6	13.5
3513-2 04	4	1800	3600	15.0	19.9	18.6	18.5
3513-2 05	5	1350	2700	20.0	24.9	23.6	23.5
3513-2 06	6	900	2700	25.0	29.9	28.6	28.5
3513-2 07	7	900	2700	30.0	34.9	33.6	33.5
3513-2 08	8	900	2700	35.0	39.9	38.6	38.5
3513-2 09	9	450	2700	40.0	44.9	43.6	43.5
3513-2 10	10	450	2700	45.0	49.9	48.6	48.5

Designation to be completed by further details (e.g. for keying, color or material options).

Packaging:

chained, in a cardboard box