

Han 70A axial module, male 6-16 mm²

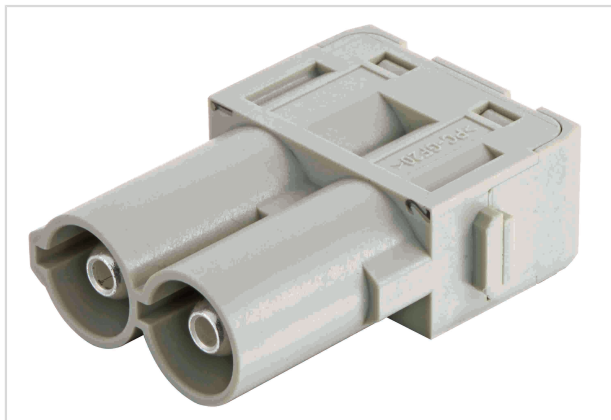


Image is for illustration purposes only. Please refer to product description.

Part number	09 14 002 2646
Specification	Han 70A axial module, male 6-16 mm ²
HARTING eCatalogue	https://b2b.harting.com/09140022646

Identification

Category	Modules
Series	Han-Modular®
Type of module	Han® 70 A module

Version

Termination method	Axial screw termination
Gender	Male
Number of contacts	2

Technical characteristics

Conductor cross-section	6 ... 16 mm ²
Rated current	70 A
Rated voltage	1,000 V
Rated impulse voltage	8 kV
Pollution degree	3
Insulation resistance	>10 ¹⁰ Ω
Contact resistance	≤0.5 mΩ
Stripping length	11 ... 12 mm
Tightening torque	2 Nm @ 6 mm ² 3 Nm @ 10 mm ² 4 Nm @ 14 mm ² 4 Nm @ 16 mm ²
Limiting temperature	-40 ... +125 °C



Pushing Performance

Technical characteristics

Mating cycles	≥500
---------------	------

Material properties

Material (insert)	Polycarbonate (PC)
Colour (insert)	RAL 7032 (pebble grey)
Material (contacts)	Copper alloy
Surface (contacts)	Silver plated
Material flammability class acc. to UL 94	V-0
RoHS	compliant with exemption
RoHS exemptions	6(a) / 6(a)-I: Lead as an alloying element in steel for machining purposes and in galvanised steel containing up to 0,35 % lead by weight / Lead as an alloying element in steel for machining purposes containing up to 0,35 % lead by weight and in batch hot dip galvanised steel components containing up to 0,2 % lead by weight 6(c): Copper alloy containing up to 4 % lead by weight
ELV status	compliant with exemption
China RoHS	50
REACH Annex XVII substances	No
REACH ANNEX XIV substances	No
REACH SVHC substances	Yes
REACH SVHC substances	Lead

Specifications and approvals

Specifications	EN 60664-1 IEC 61984
Approvals	DNV GL
UL / CSA	UL 1977 ECBT2.E235076 UL 2237 PVVA2.E318390 CSA-C22.2 No. 182.3 PVVA8.E318390

Commercial data

Packaging size	2
Net weight	32.38 g
Country of origin	Germany
European customs tariff number	85366990
eCl@ss	27440217 Module for industrial connectors (power/signals)