

# SPECIFICATION FOR APPROVAL

**CUSTOMER:**

**CUSTOMER' S PART NO. :**

**DESCRIPTION:**

**QUANTITY:**

**PART NO.:** TSDR6823-152N

**DATE:** 2016.06.30

**REMARK:**

CUSTOMER SIGNATURE

APPROVED BY	DRAWN BY
Tywin Yin	Candice Yang/Hannah Zhou

*Samples meet RoHS and  
Lead-free requirement*

**koHER**

KOHER ( Shanghai ) Electronic Co.,Ltd





# SPECIFICATION FOR APPROVAL

<b>CUSTOMER</b>		<b>PART NO.</b>	TSDR6823-152N
<b>Cus.'s PART NO.</b>		<b>PAGE NO</b>	2 of 3
<b>DESCRIPTION</b>		<b>DATE</b>	2016.06.30

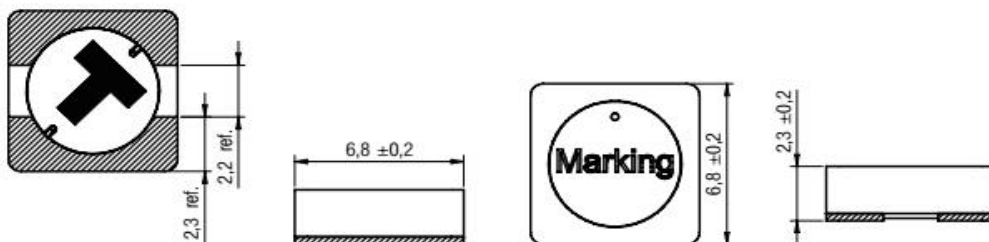
## 1. Features

- Extremely flat power inductor
- High current capability
- Magnetically shielded which results in a low leakage field
- Recommended solder profile: Reflow
- Operating temperature:  $-40\text{ }^{\circ}\text{C}$  to  $+125\text{ }^{\circ}\text{C}$

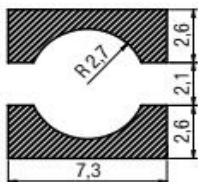
## 2. Applications

- Portable power like PDA, digital camera, PCMCIA cards and displays
- DC/DC converter
- Embedded PC
- Mobile data gathering, telemetric

## 3. Dimensions(in mm)



## Land Pattern(in mm)





# SPECIFICATION FOR APPROVAL

CUSTOMER		PART NO.	TSDR6823-152N
Cus.'s PART NO.		PAGE NO	3 of 3
DESCRIPTION		DATE	2016.06.30

## 4. Specification

Part Number	L ( $\mu\text{H}$ )	Tolerance (%)	$I_R$ (A)	$I_{\text{sat}}$ (A)	$R_{\text{DC typ.}}$ ( $\text{m}\Omega$ )	$R_{\text{DC max.}}$ ( $\text{m}\Omega$ )	Core Material
TSDR6823-152N	1500	$\pm 30$	0.08	0.11	7000	8000	NiZn

Note:

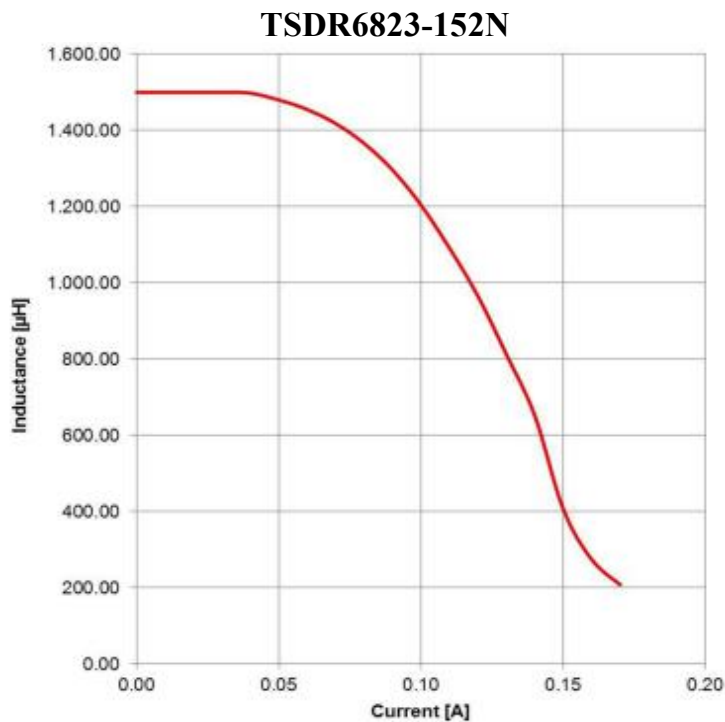
$I_R$  referring to 30 K self-heating above ambient temperature.

$I_{\text{sat}}$  referring to inductance loss of 35% typ.

It is recommended that the temperature of the part does not exceed  $125^\circ\text{C}$  under worst case operating conditions.

- Ambient temperature:  $-40^\circ\text{C}$  to  $+95^\circ\text{C}$  (referring to  $I_R$ )
- Operating temperature:  $-40^\circ\text{C}$  to  $+125^\circ\text{C}$
- Storage temperature (on tape & reel):  $-20^\circ\text{C}$  to  $+40^\circ\text{C}$ ; 75% RH max.
- Test conditions of Electrical Properties:  $20^\circ\text{C}$ , 33% RH, if not specified differently

## 5. Typical Performance Curves



## 6. Standard Packing Quatity

500pcs/Reel

*KOHER (Shanghai) Electronic Co.,Ltd*