

Table with 5 columns: PART NUMBER, REVISION, DESCRIPTION, FEED TYPE, and CONVERT TO. Contains data for Atlantic Version Terminator Interface Adapter parts 2266110-1 through 2266110-8.

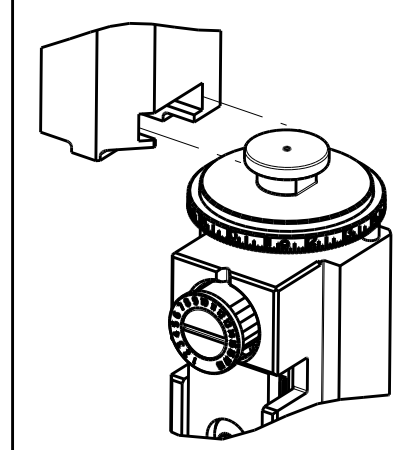


Table titled 'APPLICATOR STYLE CONVERSION CHART' showing conversion requirements from one applicator style to another. Columns include 'CONVERT TO' and 'PART NUMBERS REQUIRED'.

Table titled 'APPLICATOR DATA' with columns for CRIMP, SIZE, and TYPE. Lists wire and insulation specifications.

Table titled 'APPLICATOR CONVERSION KITS' with columns for PART NUMBER and INSULATION DIAMETER RANGE.

Table titled 'TERMINAL DATA: DEUTSCH TERMINAL TE CRIMP SPECIFICATION'. Includes wire strip length, insulation diameter range, and terminals applied.

Table titled 'TERMINAL DATA: DEUTSCH TERMINAL TE CRIMP SPECIFICATION'. Includes wire strip length, insulation diameter range, and terminals applied.

Table titled 'WIRE SIZE' showing crimp height and crimp height reference setting for various wire gauges (16 AWG to 20 AWG).

- Recommended spare parts (1). Grease bearing surfaces lightly (2). Lubricate daily per the applicator instruction sheet (3). Applicator specific data to be entered into blank memory chip (4). Adjustment of the stripper may be required (5). Apply Loctite to threads (6). Grease threads, groove and O-ring (7). Magnet orientation (8). Crimp height reference setting (9). Spare feed cam storage location (10). Conversion to non-carrier cutting style (11). Assembly instructions for non-crimp height adjust (12). Appropriate log sheets (13). Terminal lubricant (14).

*WARNING ON INSTALLATION, SET WIRE DISC, ITEM 40 TO LARGEST WIRE SIZE SETTING. USE OF SETTINGS BELOW MINIMUM REQUIRED CRIMP HEIGHT SETTING WILL CAUSE DAMAGE TO CRIMP TOOLING.

Table with 4 columns: PART NO, DESCRIPTION, ITEM NO. Lists parts like applicator shim pack, O-ring, push rod, and bushing.

ATLANTIC VERSION Shown on sheets 1 of 4 & 2 of 4 (Pacific version shown on sheets 3 of 4 & 4 of 4)

Table with columns for REVISIONS, including description, date, and initials.

Large table listing parts with columns for part number, description, and item number. Includes parts like Feed Cam, Detent Pin, Spring, Compression, Washer, etc.

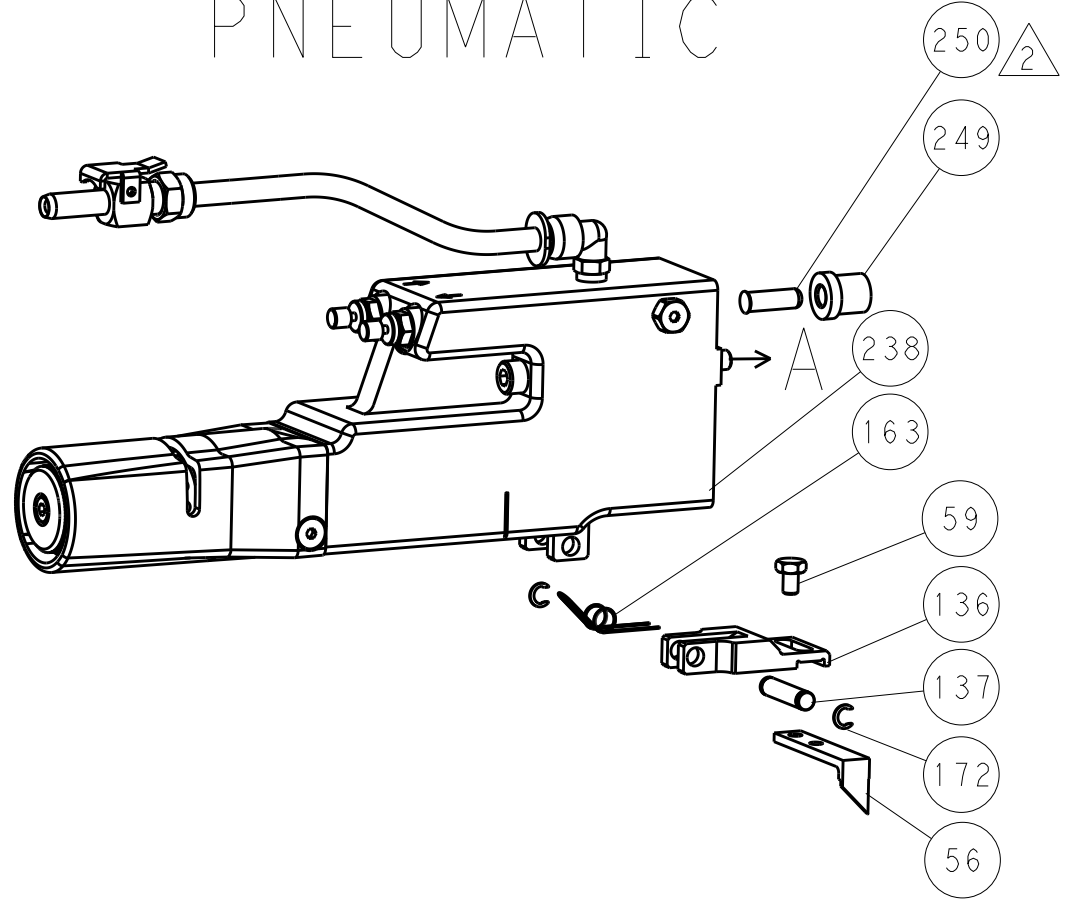
Technical drawing information block including dimensions, tolerances, material, finish, weight, and drawing number (00779).

LOC		DIST		REVISIONS			
A	66	P	LTM	DESCRIPTION	DATE	OWN	APVD
		-		SEE SHEET 1			

FEED TYPE MECHANICAL



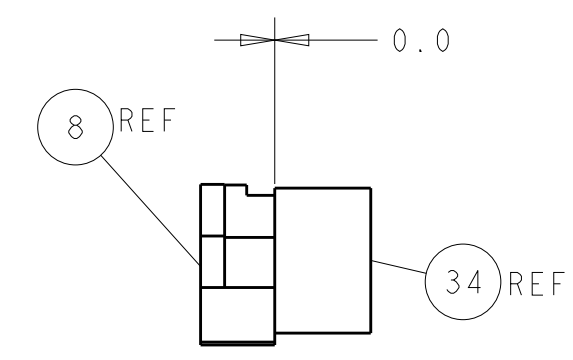
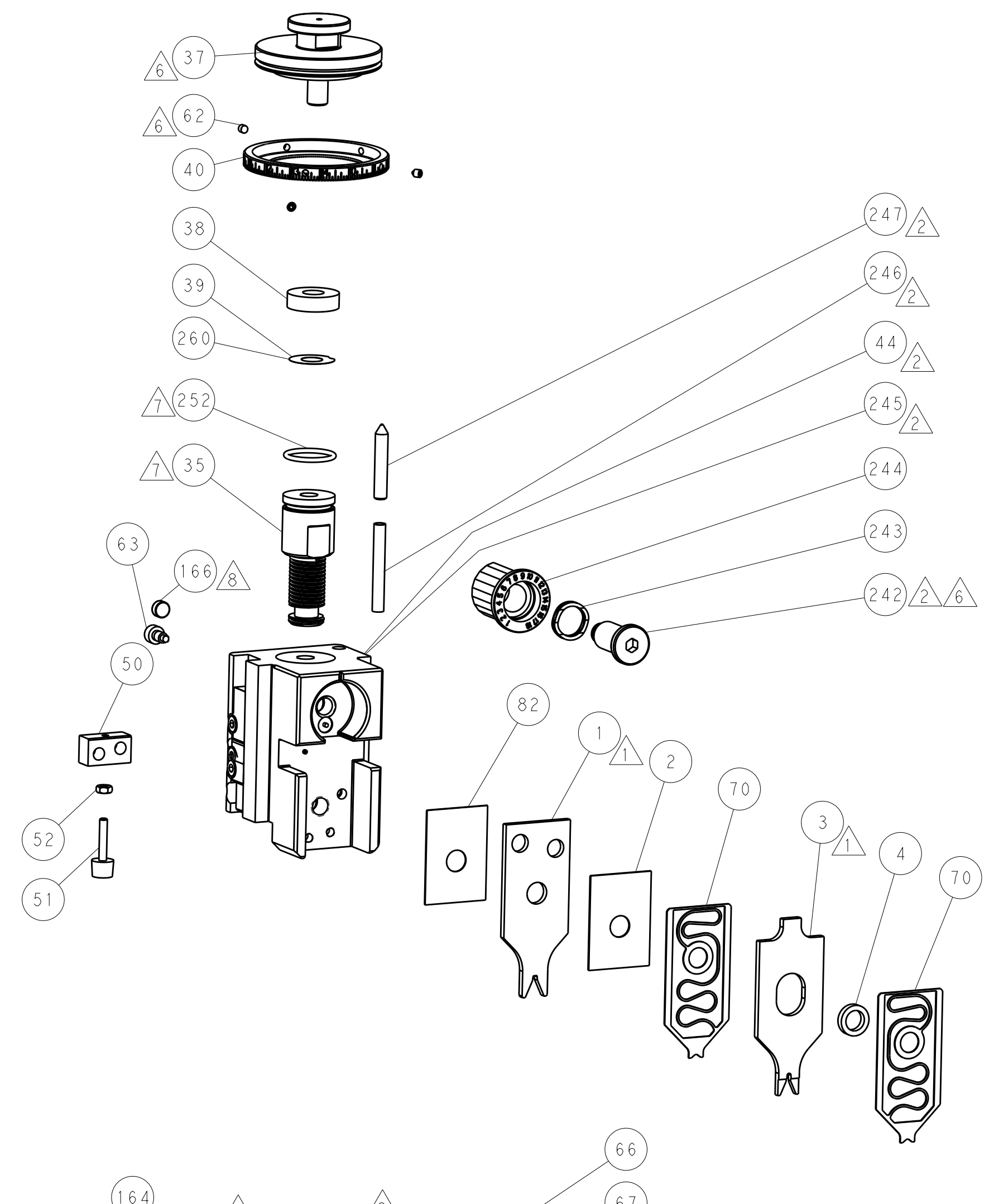
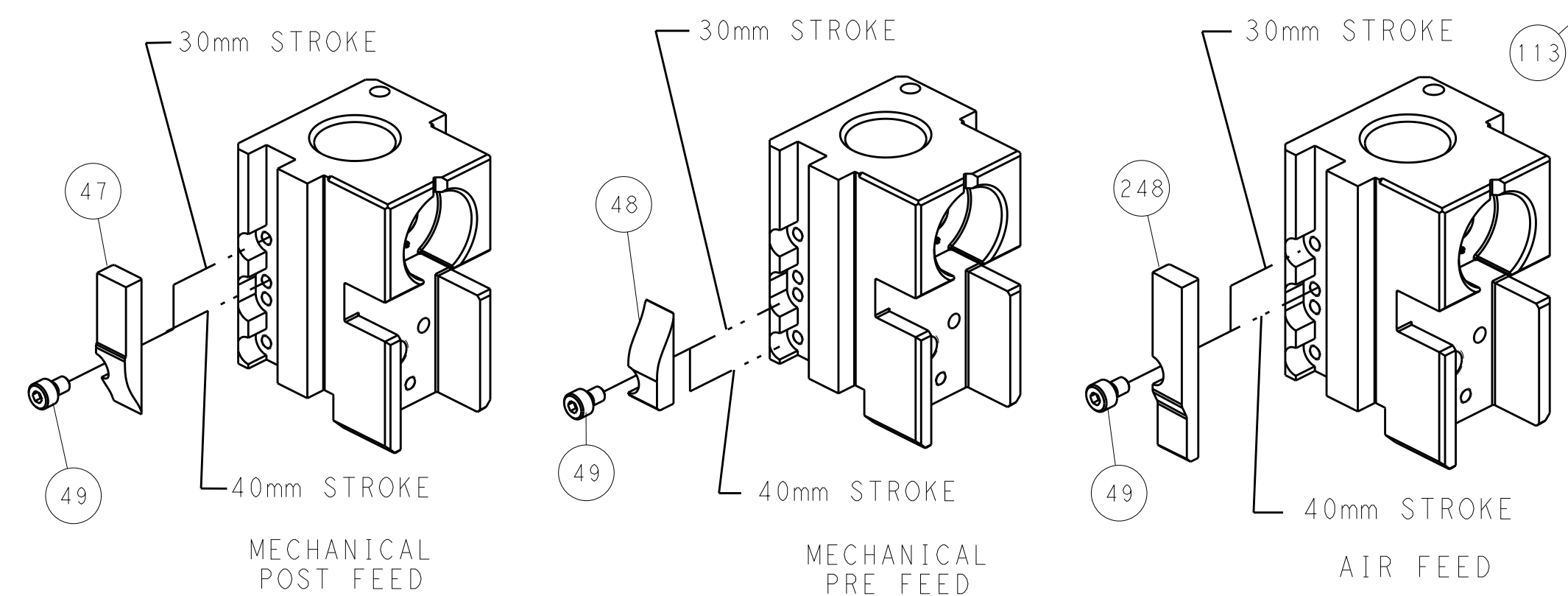
PNEUMATIC



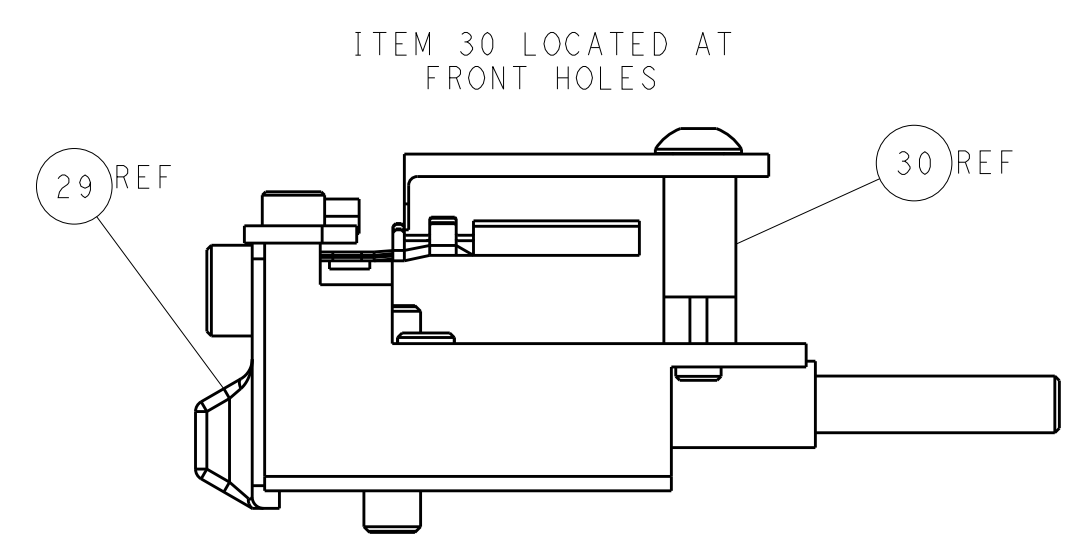
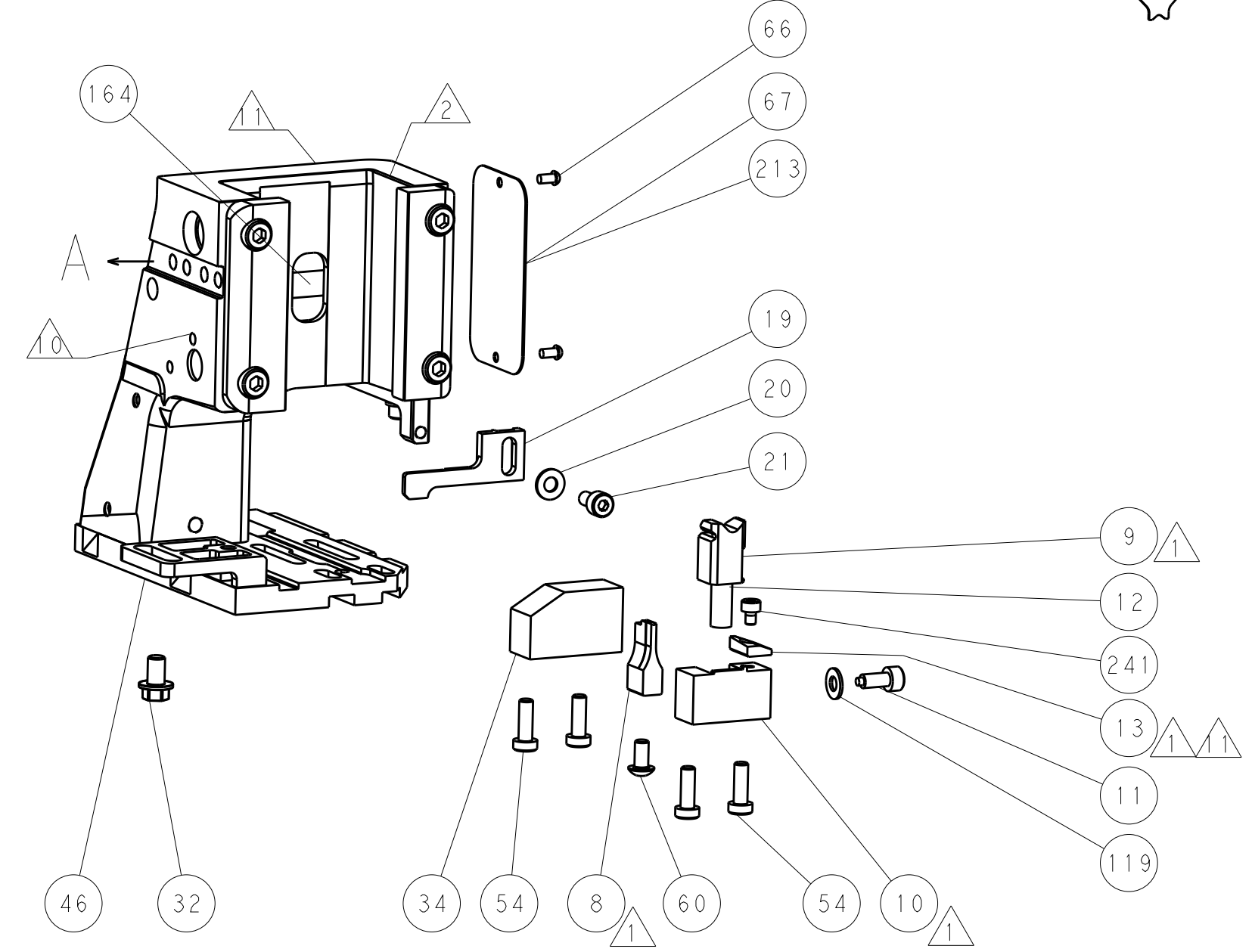
SERVO LATCH PLATE



CAM POSITIONS



TERMINAL SUPPORT LOCATION



FEED TRACK POSITION GUIDE BY INSULATION BARREL

ATLANTIC VERSION
 Shown on sheets 1 of 4 & 2 of 4
 (Pacific version shown on sheets 3 of 4 & 4 of 4)

DIMENSIONS:		TOLERANCES UNLESS OTHERWISE SPECIFIED:		DWG: R. KNEPPER 08-Oct-13		TE Connectivity	
mm	0 PLC ±	1 PLC ±	2 PLC ±	3 PLC ±	4 PLC ±	5 PLC ±	Harrisburg, PA 17105-3608
MATERIAL:		FINISH:		CHK: G. BAILEY 08-Oct-13		NAME: Ocean Side Feed Applicator	
APVD: M. CLIFFORD 08-Oct-13		PRODUCT SPEC:		APVD: M. CLIFFORD 08-Oct-13		RESTRICTED TO:	
APPLICATION SPEC:		WEIGHT:		SIZE: A11 00779		CAGE CODE: C=2266110	
Customer Accessible Production Drawing		SCALE: 1:2		SHEET: 2 of 4		REV: D1	

PART NUMBER	REVISION	DESCRIPTION	FEED TYPE
2-2266110-1	D	FINE CRIMP HEIGHT ADJUST	MECHANICAL
2-2266110-2	D	FINE CRIMP HEIGHT ADJUST	PNEUMATIC
2-2266110-5	C	FINE CRIMP HEIGHT ADJUST	SERVO LATCH PLATE
2-2266110-7	C	FINE CRIMP HEIGHT ADJUST	NONE
7-2266110-7	C	CRIMP TOOLING KIT	-
7-2266110-8	C	APPLICATOR CONVERSION KIT	-

CRIMP WIRE	SIZE	TYPE
1.88 mm	[.074]	F
1.73 mm	[.068]	O

TE TERMINAL	DEUTSCH TERMINAL	TE TERMINAL	DEUTSCH TERMINAL
286503-4	1060-16-0622	286503-5	1060-16-0644
1-286503-3	1060-16-0677	286503-6	1060-16-0688

WIRE SIZE	CRIMP HEIGHT mm [INCH]	CRIMP HEIGHT REFERENCE SETTING
16 AWG	1.27+0.03/-0.05 [.050+.001/-.002]	6.5
1.00mm ²	1.27+0.03/-0.05 [.050+.001/-.002]	6.5
18 AWG	1.24+0.03/-0.05 [.049+.001/-.002]	6.8
0.75mm ²	1.22+0.03/-0.05 [.048+.001/-.002]	6.9
20 AWG	1.22+0.03/-0.05 [.048+.001/-.002]	6.9
0.50mm ²	1.14+0.03/-0.05 [.045+.001/-.002]	7.7

- RECOMMENDED SPARE PARTS
- GREASE BEARING SURFACES LIGHTLY
- LUBRICATE DAILY PER THE APPLICATOR INSTRUCTION SHEET SUPPLIED WITH THE APPLICATOR.
- APPLICATOR SPECIFIC DATA TO BE ENTERED INTO BLANK MEMORY CHIP AT ASSEMBLY. SEE BELOW FOR PART NUMBER:
MECHANICAL FEED WITH "SMART APPLICATOR" CONVERSION: 8-2266110-4
PNEUMATIC FEED WITH "SMART APPLICATOR" CONVERSION: 8-2266110-4
SERVO FEED WITH "FINE CRIMP HEIGHT ADJUST": 8-2266110-5
- ADJUSTMENT OF THE STRIPPER MAY BE REQUIRED WHEN MOVING THE APPLICATOR BETWEEN BENCH AND LEADMAKER APPLICATIONS.
- APPLY PART NUMBER 1-23419-5 LOCTITE TO THREADS OF ITEMS 62. APPLY PART NUMBER 2-23419-6 LOCTITE TO THREADS OF ITEMS 242.
- GREASE THREADS, GROOVE AND O-RING ON ITEMS 139 & 152.
- MAGNET MUST BE ORIENTED CORRECTLY IN ORDER TO PROPERLY ACTUATE THE COUNTER.
- CRIMP HEIGHT REFERENCE SETTING WAS THE SETTING USED WHEN THE APPLICATOR WAS QUALIFIED AT THE FACTORY. ADJUSTMENT MAY BE NECESSARY WHEN RUNNING APPLICATOR IN THE FIELD.
- SPARE FEED CAM STORAGE LOCATION REFER TO INSTRUCTION SHEET FOR ADDITIONAL INFORMATION.
- TO CONVERT THE APPLICATOR TO A NON-CARRIER CUTTING STYLE, REMOVE ITEM 13 AND ATTACH TO THE LOCATION ON BACK SIDE OF THE HOUSING. REFER TO INSTRUCTION SHEET FOR ADDITIONAL INFORMATION.
- SEE APPROPRIATE APPLICATOR LOG SHEETS FOR APPLIED TERMINALS, WIRE RANGE AND MEMORY CHIP.
- TERMINAL LUBRICANT IS RECOMMENDED.

PART NUMBER	INSULATION DIAMETER RANGE
7-2266110-8	Ø1.68-2.39mm [.066-.094]
7-2266111-8	Ø1.27-1.65mm [.050-.065]

TE TERMINAL	DEUTSCH TERMINAL	TE TERMINAL	DEUTSCH TERMINAL
286504-4	1062-16-0622	286504-5	1062-16-0644
1-286504-4	1062-16-0677	286504-6	1062-16-0688

CONVERT TO	PART NUMBERS REQUIRED					
PNEUMATIC FEED	2119950-1	1338685-1	5-18022-5	2119641-2	2119799-1	2063440-1
SERVO LATCH PLATE	2119951-1	-	8-2266110-5	1901094-3	-	2168400-6 (QUANTITY 2)
SMART APPLICATOR	2161326-1	-	8-2266110-4	-	-	-
MECHANICAL FEED	2119949-1	1338685-1	5-18022-5	2119653-2	-	-
SERVO LATCH PLATE	2119951-1	-	8-2266110-5	1901094-3	-	2168400-6 (QUANTITY 2)
SMART APPLICATOR	2161326-1	-	8-2266110-4	-	-	-
MECHANICAL FEED	2119949-1	1338685-1	5-18022-5	2119653-2	-	-
PNEUMATIC FEED	2119950-1	1338685-1	5-18022-5	2119641-2	2119799-1	2063440-1

-	-	1	1	1	1	2119782-1	FINE ADJUST HEAD ASM, PACIFIC STYLE	251
-	-	-	-	1	-	2119640-1	PUSH ROD, AIR FEED	250
-78	-77	-27	-25	-22	-21	PART NO	DESCRIPTION	ITEM NO

PACIFIC VERSION
Shown on sheets 3 of 4 & 4 of 4
(Atlantic version shown on sheets 1 of 4 & 2 of 4)

SET UP GAUGE		LOC	DIST	REVISIONS				
2119599-1		A	66	REV	DATE	OWN	APVD	
SEE SHEET 1								
				1	2079988-1	BUSHING, LCH5-12, MISUMI	249	
				1	1-22279-3	SPRING, COMPRESSION	246	
				1	2119082-9	CAM, SNAIL, INSULATION ADJUSTMENT	244	
				1	2079764-1	WASHER, WAVE SPRING, CREST-TO-CREST	243	
				1	2119083-1	RETAINER, INSULATION DIAL	242	
				1	7-18023-7	SCR, SKT HD CAP M3 X 4.0	241	
				2	2168400-6	SHCS, LOW HEAD, RoHS, M5 X 16	240	
				1	2119580-1	MECHANICAL FEED ASSEMBLY	239	
				1	2063440-1	AIR FEED MODULE	238	
				1	2119740-2	TAG, IDENTIFICATION	213	
				1	1901094-3	SPACER, FEEDER	198	
				2	21045-3	RING, RETAIN, EXTERN, 3/16 CRESCENT	172	
				1	994969-1	MAGNET, RARE EARTH HIGH ENERGY	166	
	REF	REF	REF	REF	994970-2	COUNTER, MAGNETIC	164	
				1	240638-1	SPRING, FEED FINGER	163	
				1	8-21084-1	O-RING, .801 ID, .070 DIA. MAT.	152	
				1	2119641-2	FEED CAM, AIR FEED	151	
				1	2119798-2	DETENT PIN	145	
				1	2079383-8	SCR, BHSC, RoHS (M4 X 16)	144	
				4	2168400-5	SHCS, LOW HEAD, RoHS, M4 X 20	143	
				1	2119653-2	FEED CAM, POST FEED	142	
				1	1-2119656-0	APPLICATOR BASIC ASSEMBLY, SF	141	
				1	2119650-1	RAM, ASIAN STYLE, SIDE FEED	140	
				1	2119092-2	BOLT, ADJUSTMENT	139	
				1	3-23627-7	PIN, RETAIN, GRVD, 3/16 X .854	137	
				1	2119799-1	HOLDER, FEED FINGER, AF	136	
				REF	-	SEE NOTE 4	135	
				1	1633743-1	SERVO FEED LATCH ASM	133	
				1	1-18028-2	WASHER, FLAT, REG M4	119	
				REF	-	-	117	
				1	2119944-1	FEED FINGER ASSEMBLY, SF	117	
				1	2119955-1	ASSY, LUBRICATOR, SIDE FEED	113	
				1	455888-4	SPACER, CRIMPER	82	
				-	2266110	PRINT, APPLICATOR LOG SHEET	72	
				1	2119956-1	DOCUMENTATION PACKAGE	71	
				2	2119791-5	DEPRESSOR, WIRE	70	
				1	2119740-1	TAG, IDENTIFICATION	67	
				2	2168078-1	SCREW, DRIVE, RH, RoHS, 2 x .188	66	
				1	2119793-1	LIMITER, ADJUSTMENT BOLT	63	
				3	992763-5	SCR, SET, SOC, CONE POINT, M3 X 4.0	62	
				-	5-18022-5	SCR, HEX HD CAP, M4 X 6.0	59	
				-	1338685-1	PAWL, FEED	56	
				2	1-2168083-0	SCR, SKT HD CAP, RoHS, M4 X 10	53	
				1	5018030-1	NUT, HEX, REG, RoHS, M3	52	
				1	811242-5	BUMPER, HOLD DOWN	51	
				1	690753-2	SPACER, TONKER	50	
				-	18023-9	SCR, SKT HD CAP M4 X 6.0	49	
				-	2119652-1	FEED CAM, PRE FEED	48	
				1	2079383-7	SCR, BHSC, RoHS (M8 X 25)	41	
				1	2119645-1	DISC, NUMBERED FA WIRE ADJUSTMENT	40	
				1	2119957-1	APPLICATOR SHIM PACK	39	
				1	2119644-1	RAM WASHER, PRECISION	38	
				1	2-1752356-0	SUPPORT, TERMINAL	34	
				2	2079383-5	SCR, BHSC, RoHS (M4 X 20)	33	
				1	2161328-1	HEX HEAD, FLANGED, M5 X 8mm LONG	32	
				1	1-1320908-0	SPACER, STRIP GUIDE	30	
				1	2119959-1	ASSEMBLY, STRIP GUIDE	29	
				1	1320928-2	STRIP GUIDE	24	
				1	2168083-2	SCR, SKT HD CAP, RoHS, M4 X 8.0	21	
				1	1-18028-2	WASHER, FLAT, REG M4	20	
				1	2119533-1	STRIPPER, SIDE FEED	19	
				1	2119806-1	INSERT, SHEAR	13	
				1	3-22280-3	SPRING, COMPRESSION	12	
				1	1-356885-4	STOP, SHEAR	11	
				1	2119805-1	SHEAR HOLDER, FRONT	10	
				1	1803095-6	FLOATING SHEAR, FRONT	9	
				1	1803293-6	ANVIL, COMBINATION DEUTSCH STYLE	8	
				-	-	-	7	
				-	-	-	6	
				1	1-2119757-0	DEPRESSOR, SHEAR	5	
				-	238011-9	BLOCK, CRIMPER SPACER	4	
				1	1803019-7	CRIMPER, INSULATION O	3	
				1	455888-5	SPACER, CRIMPER	2	
				1	4-1633713-1	CRIMPER, WIRE PREMIUM	1	
-78	-77	-27	-25	-22	-21	PART NO	DESCRIPTION	ITEM NO

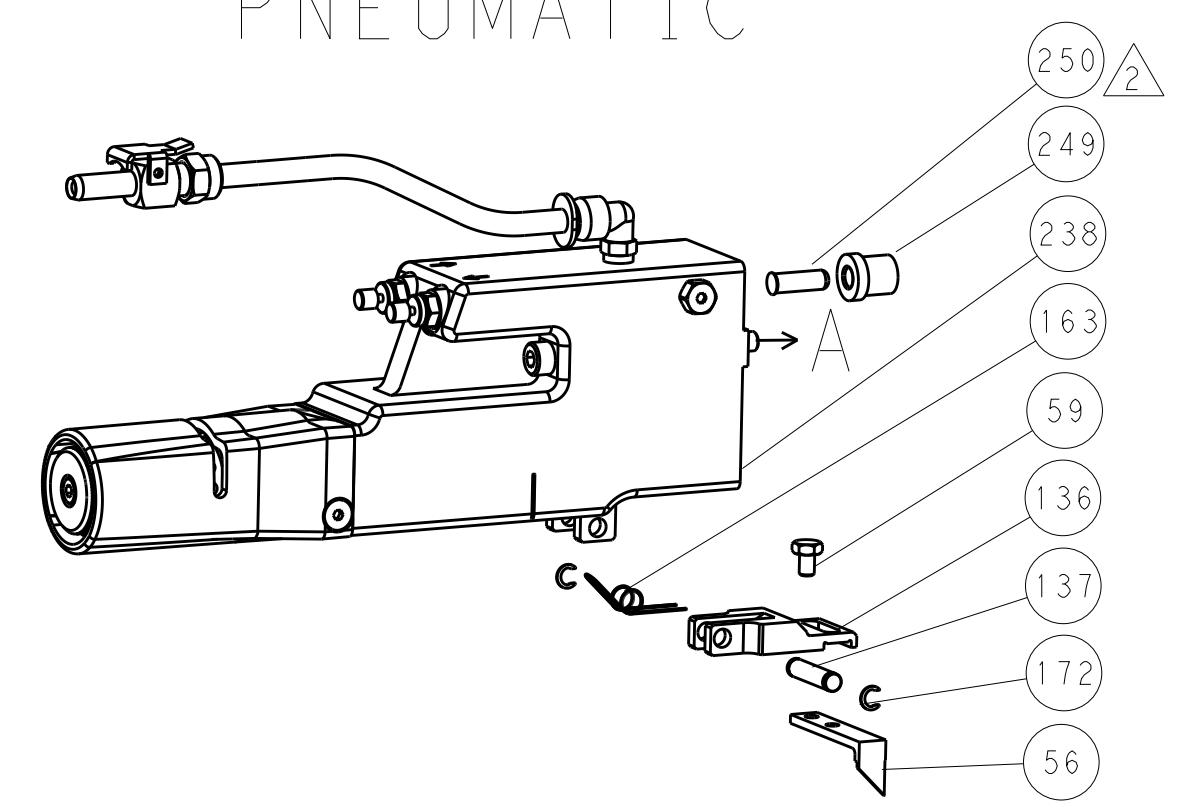
DIMENSIONS:		TOLERANCES UNLESS OTHERWISE SPECIFIED: 0 PLC ±. 1 PLC ±. 2 PLC ±. 3 PLC ±. 4 PLC ±. ANGLES ±. FINISH	DWG NO: 08-Oct-13 CHK: R. KNEPPER G. BAILEY 08-Oct-13 APVD: M. CLIFFORD 08-Oct-13 NAME: Ocean Side Feed Applicator PRODUCT SPEC: - APPLICATION SPEC: - WEIGHT: - MATERIAL: -	SIZE: A1 CASE CODE: 00779 DRAWING NO: C=2266110 RESTRICTED TO: - SCALE: 1:2 SHEET: 3 OF 4 REV: D1 Customer Accessible Production Drawing
-------------	--	---	--	---

LOC		DIST		REVISIONS			
A	66	P	LTM	DESCRIPTION	DATE	OWN	APVD
		-	-	SEE SHEET 1	-	-	-

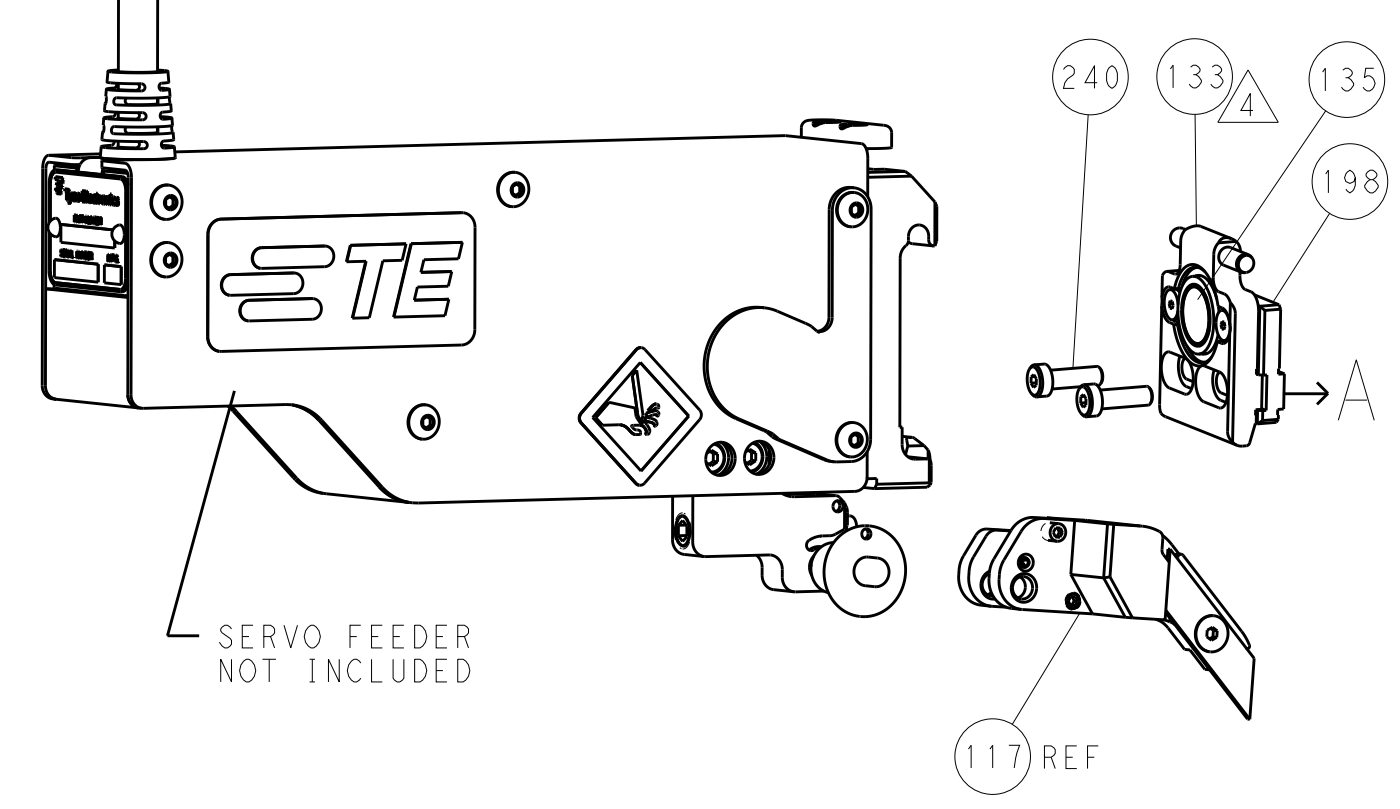
FEED TYPE MECHANICAL



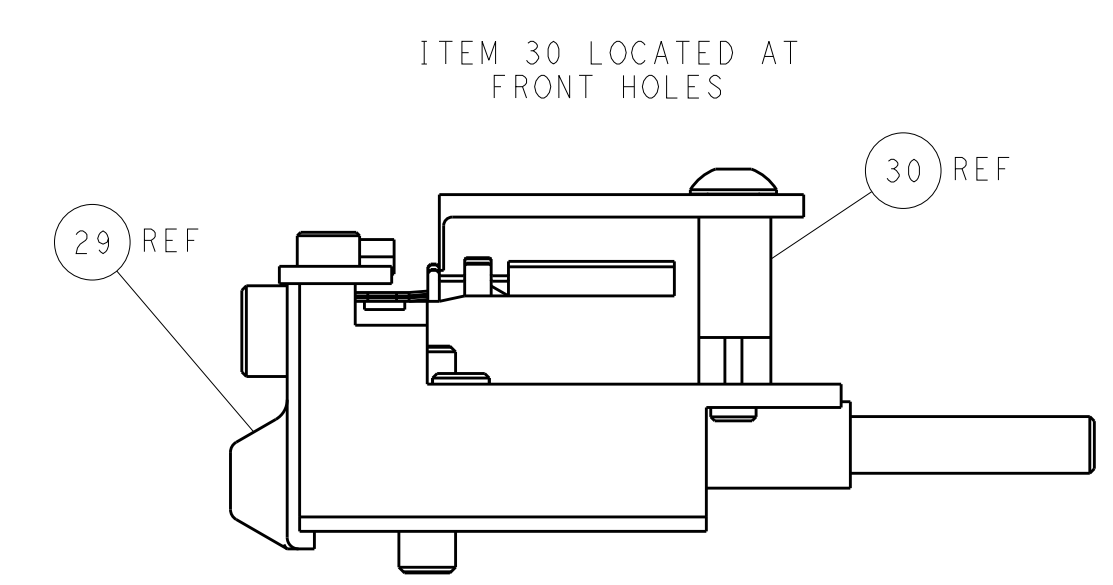
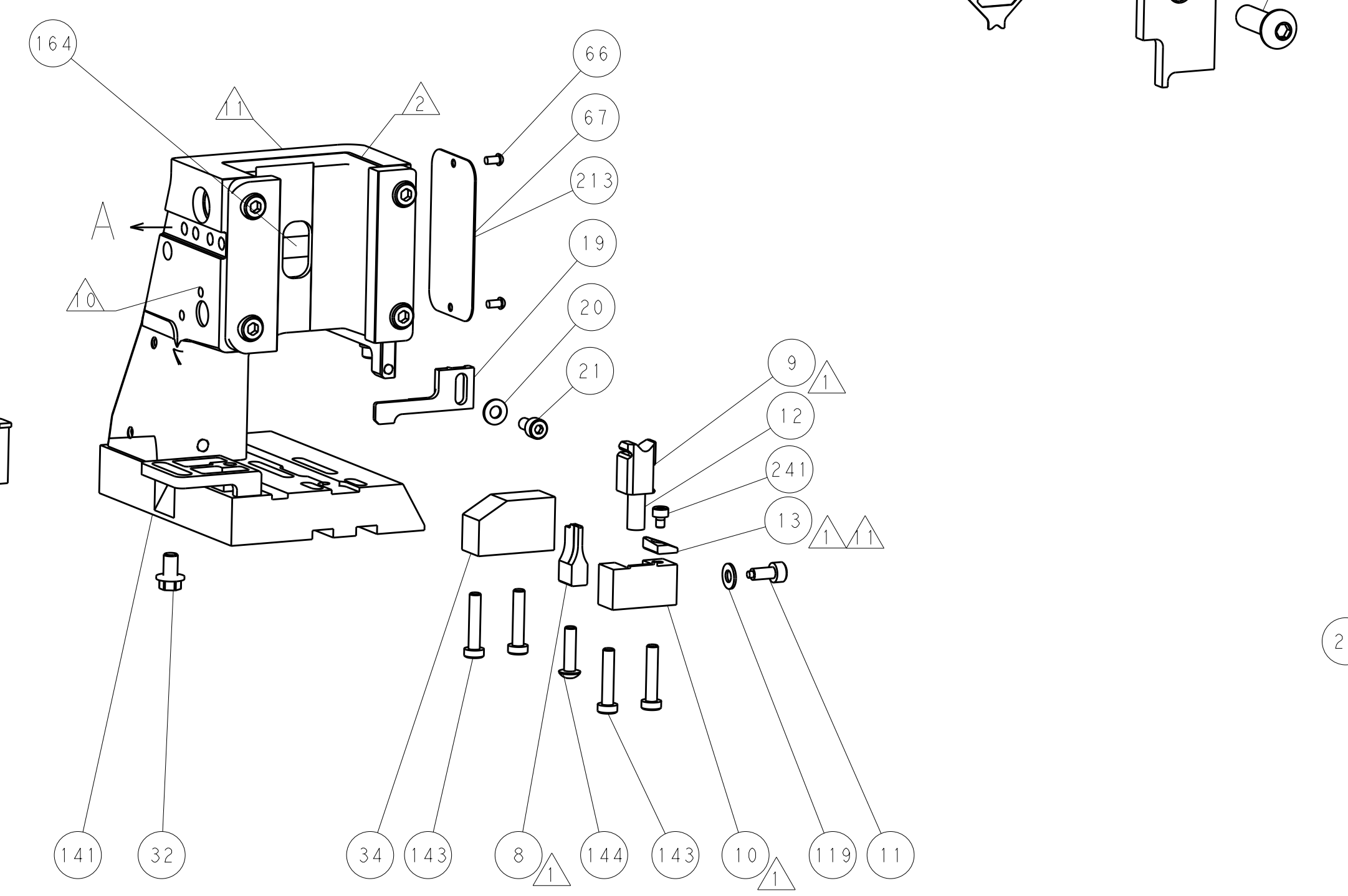
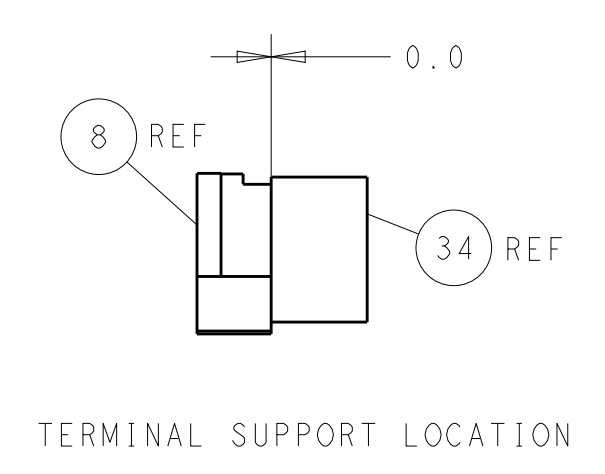
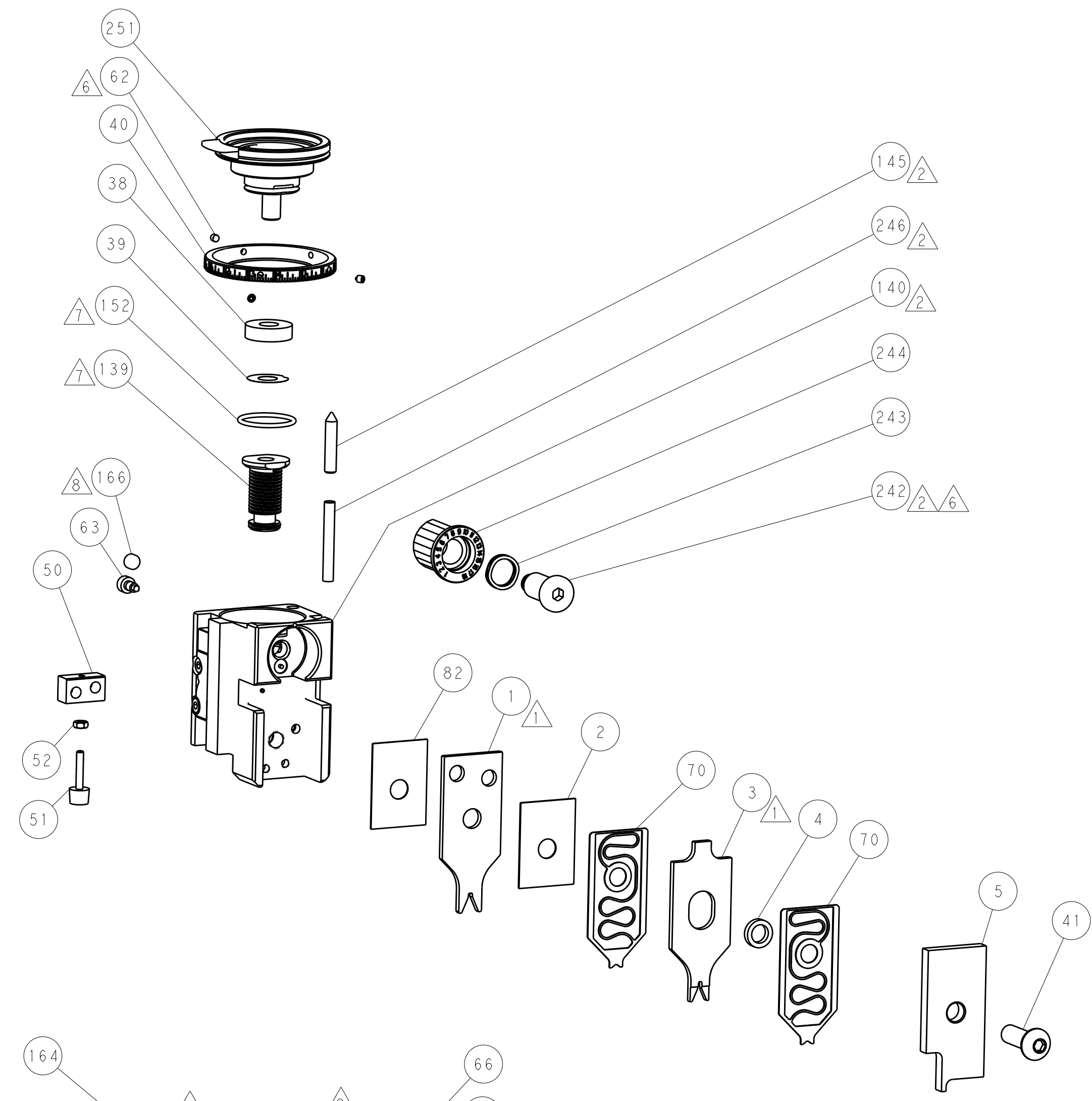
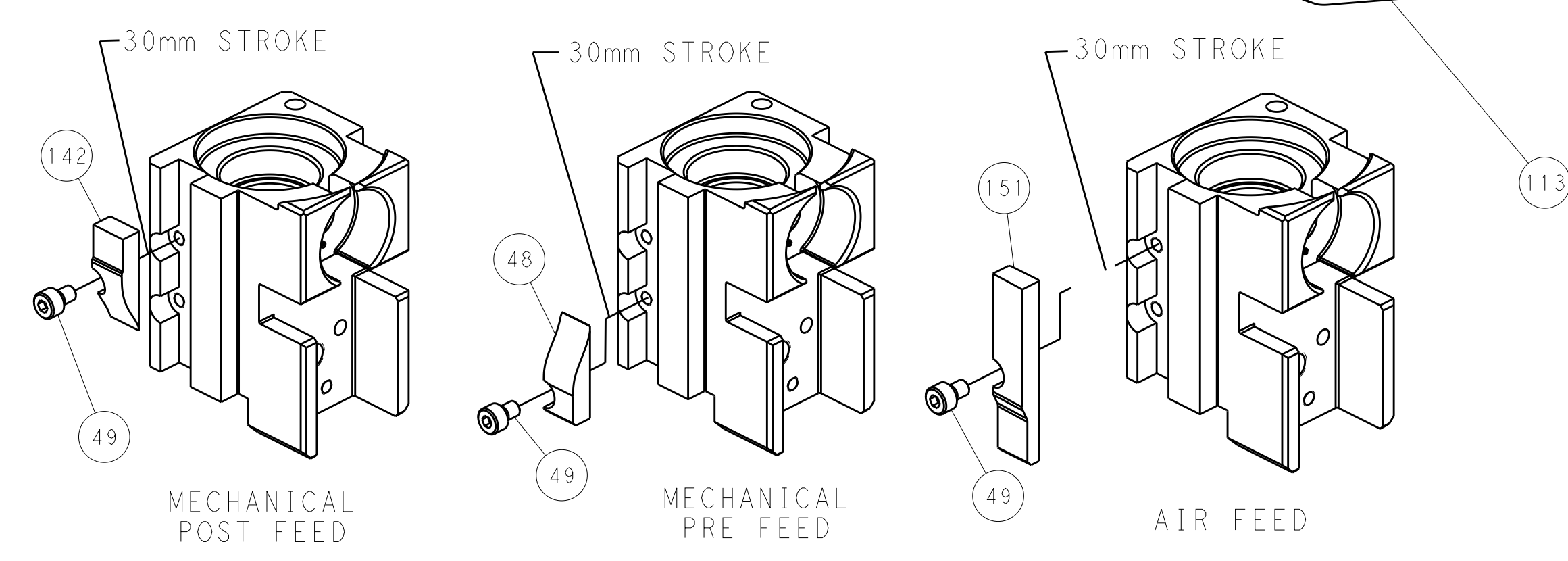
PNEUMATIC



SERVO LATCH PLATE



CAM POSITIONS



PACIFIC VERSION
 Shown on sheets 3 of 4 & 4 of 4
 (Atlantic version shown on sheets 1 of 4 & 2 of 4)

DIMENSIONS:		TOLERANCES UNLESS OTHERWISE SPECIFIED:		DWN: R. KNEPPER 08-Oct-13		STE Connectivity	
mm	0 PLC ±	1 PLC ±	2 PLC ±	3 PLC ±	4 PLC ±	NAME: Ocean Side Feed Applicator	Harrisburg, PA 17105-3608
MATERIAL:		FINISH:		APVD: M. CLIFFORD 08-Oct-13		RESTRICTED TO:	
				PRODUCT SPEC:		SIZE: CAGE CODE: DRAWING NO:	
				APPLICATION SPEC:		A1 00779 ©=2266110	
				WEIGHT:		SCALE: 1:2 SHEET 4 OF 4 REV: 1	
				Customer Accessible Production Drawing		SHEETS 1 & 2 ARE NOT REQUIRED FOR PACIFIC VERSION	