

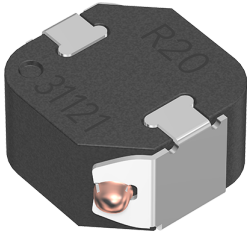


Applications	<div> Automotive Grade</div>
Feature	<div>AEC-Q200AEC-Q200</div>
	<div>Wire WoundWire Wound</div>
	<div>ShieldMagnetic Shield</div>
	<div>Metal CoreMetal Core</div>
Series Type	SPM
Status	<div> Production</div>
Brand	TDK



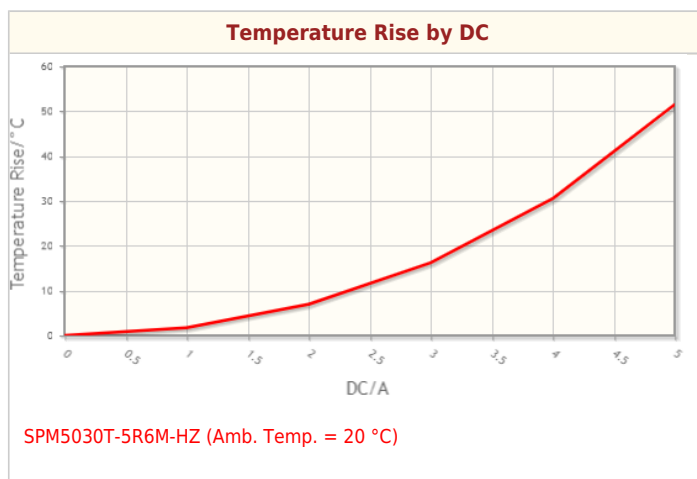
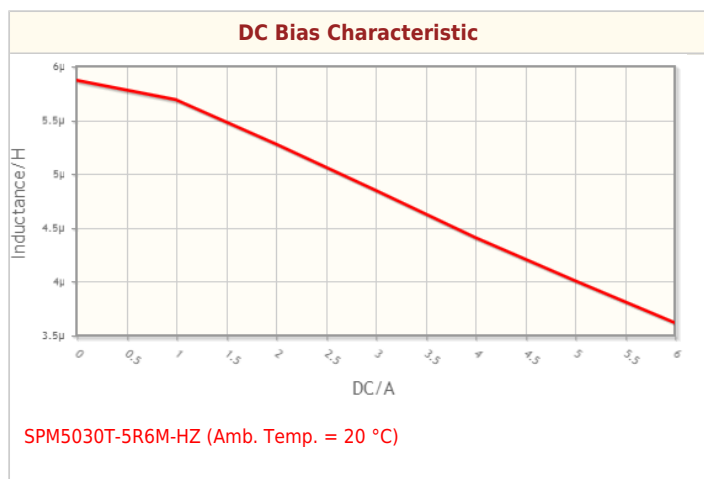
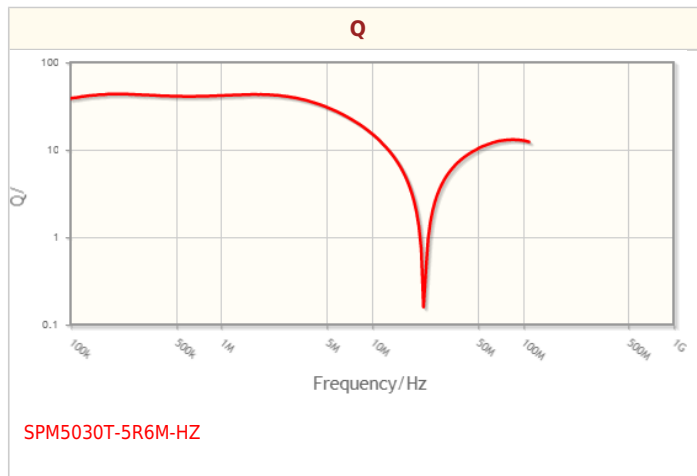
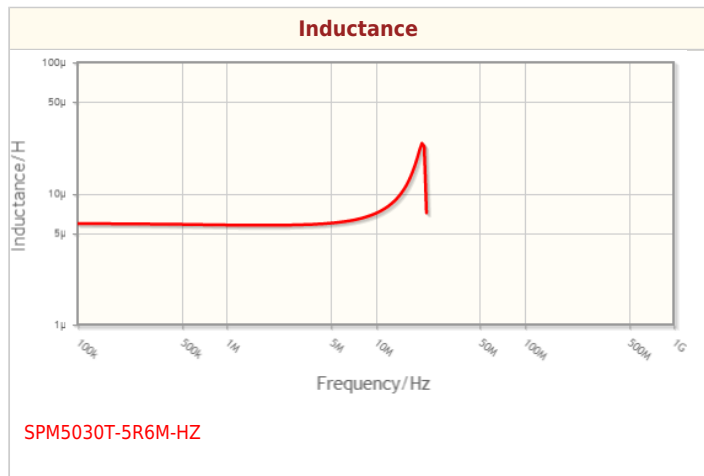
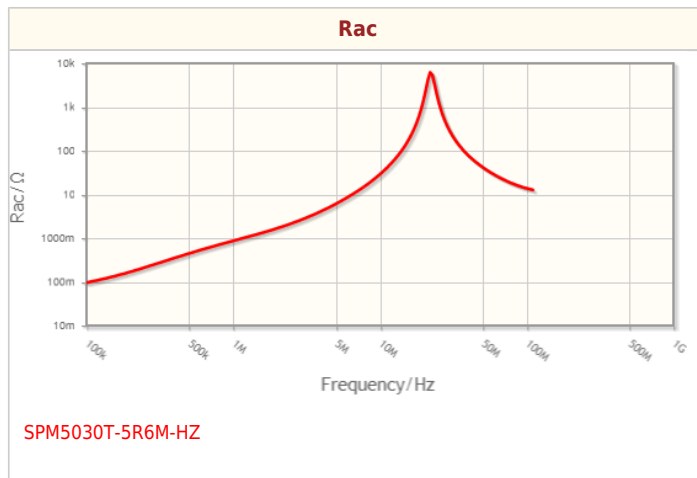
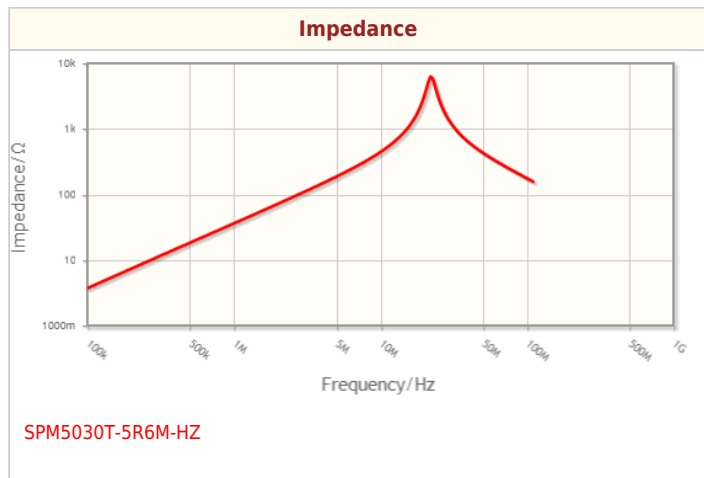
Size	
Length(L)	5.20mm ±0.30mm
Width(W)	5.00mm ±0.30mm
Thickness Height	3.00mm Max.
Recommended Land Pattern (A)	1.50mm Nom.
Recommended Land Pattern (B)	2.70mm Nom.
Recommended Land Pattern (C)	2.20mm Nom.

Electrical Characteristics	
Inductance	5.6μH ±20% at 100kHz
Rated Current (L Change) [Typ.]	3.6A (20% Down)
Rated Current (L Change) [Max.]	
Rated Current (Temperature Rise) [Typ.]	4.5A (40°C Rise)
Rated Current (Temperature Rise) [Max.]	
DC Resistance [Typ.]	67.1mΩ
DC Resistance [Max.]	73.9mΩ
Self Resonant Frequency [Min.]	
Self Resonant Frequency [Typ.]	
Q [Min.]	
Q [Typ.]	

Other	
Operating Temp. Range (Including Self-Temp. Rise)	-40 to 125°C
Soldering Method	Reflow
	Iron Soldering
AEC-Q200	YES
Packing	Embossed (Plastic)Taping [180mm Reel, Tape width 12mm]
Package Quantity	500pcs
Weight	0.38g

! Images are for reference only and show exemplary products.
! This PDF document was created based on the data listed on the TDK Corporation website.
! All specifications are subject to change without notice.

Characteristic Graphs(This is reference data, and does not guarantee the products characteristics.)



Associated Images

