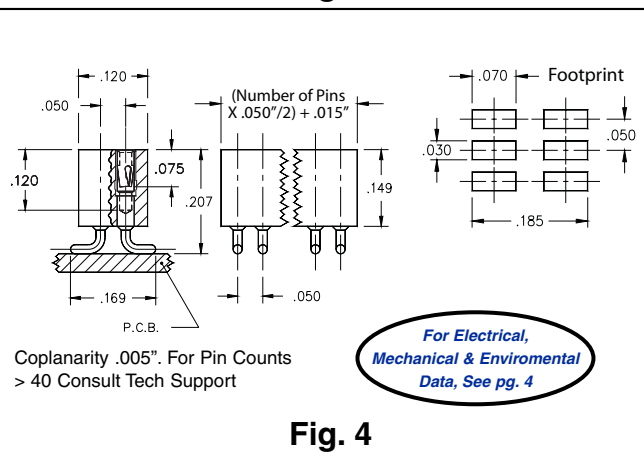
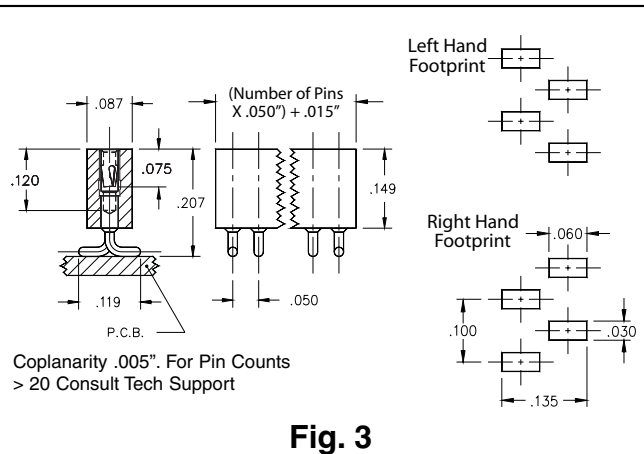


**XX=Plating Code**  
**See Below**



**For Electrical, Mechanical & Environmental Data, See pg. 4**

- Single row interconnects having an even number of pins are now available with a left or right hand footprint.
- Headers (850 & 852) use MM# 4006 pins. See page 175 for details.
- Sockets (851 & 853) use MM# 4890-0 receptacles and accept pin diameters from .015-.021. See page 131 for details.
- Coplanarity .005" (Single Row max 20 pins; Double Row max 40 pins). For higher pin counts contact technical support .
- Insulators are high temp. thermoplastic.



**Ordering Information**

<b>Fig. 1L</b>	<b>Single Row Header, Left Hand Footprint</b> <b>Odd or Even # of pins</b>	850-XX-0__-30-001000
	<b>Specify # of pins</b>	01-50
<b>Fig. 1R</b>	<b>Single Row Header, Right Hand Footprint</b> <b>Even # of pins</b>	850-XX-0__-30-002000
	<b>Specify even # of pins</b>	02-50
<b>Fig. 2</b>	<b>Double Row Header, Even # of pins</b>	852-XX-__-30-001000
	<b>Specify even # of pins</b>	004-100
SPECIFY PLATING CODE XX=		10 $\diamond$ 90      40 $\diamond$
Pin Plating		10 $\mu$ " Au    200 $\mu$ " Sn/Pb    200 $\mu$ " Sn
<b>Fig. 3L</b>	<b>Single Row Socket, Left Hand Footprint</b> <b>Odd or Even # of pins</b>	851-XX-0__-30-001000
	<b>Specify # of pins</b>	01-50
<b>Fig. 3R</b>	<b>Single Row Socket, Right Hand Footprint</b> <b>Even # of pins</b>	851-XX-0__-30-002000
	<b>Specify even # of pins</b>	02-50
<b>Fig. 4</b>	<b>Double Row Socket, Even # of pins</b>	853-XX-__-30-001000
	<b>Specify even # of pins</b>	004-100
SPECIFY PLATING CODE XX=		93      99      43 $\diamond$ 44 $\diamond$
Sleeve (Pin)		200 $\mu$ " Sn/Pb    200 $\mu$ " Sn/Pb    200 $\mu$ " Sn    200 $\mu$ " Sn
Contact (Clip)		30 $\mu$ " Au    200 $\mu$ " Sn/Pb    30 $\mu$ " Au    200 $\mu$ " Sn