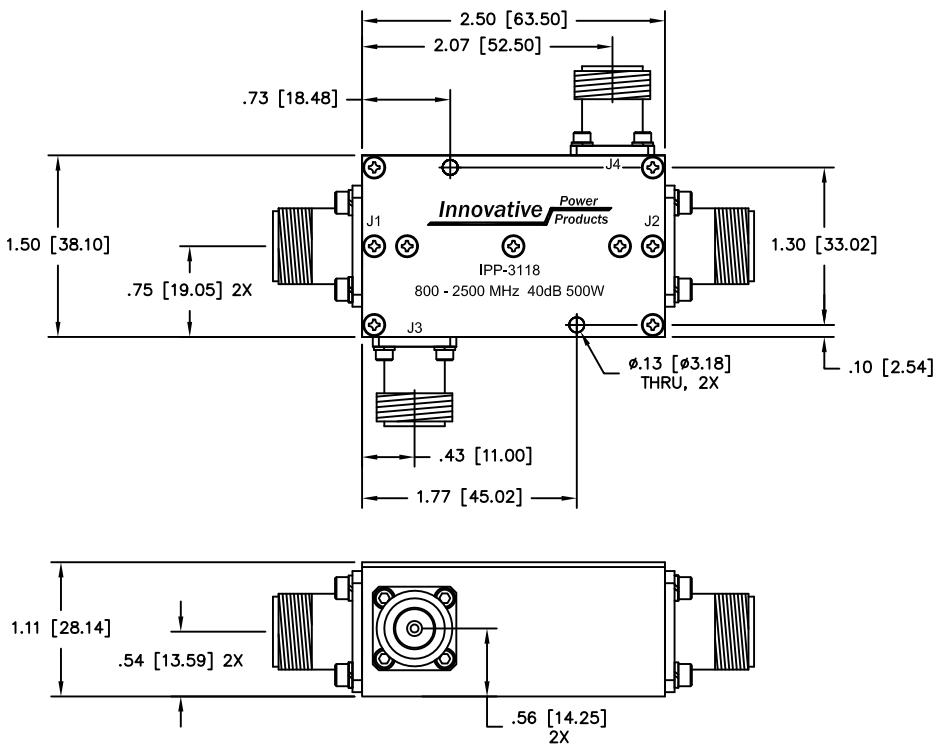


UNAUTHORIZED USE OF THIS  
DRAWING IS STRICTLY PROHIBITED

DAR	REV	DESCRIPTION	APPVD	DATE
3016	A	INITIAL RELEASE	DG	3-11
4492	B	SEE DAR	DG	8-13



**NOTES**

1. CONNECTOR TYPE J1 - J4: TYPE "N" FEMALE

**ELECTRICAL SPECIFICATIONS**

FREQUENCY: 800 - 2500 MHz.  
 INSERTION LOSS: <0.30dB  
 MAIN LINE VSWR: <1.25:1  
 COUPLING: 40.0 ±1.0dB  
 DIRECTIVITY: >20dB  
 COUPLED FLATNESS: ±0.50dB  
 POWER: 500 WATT

J1: INPUT  
 J2: OUTPUT  
 J3: -40dB (FWD COUPLED)  
 J4: -40dB (REFL. COUPLED)

MATERIAL AL. ALLOY 6061-T651	DWN S.Cornell	DATE 3-10-10		
	ENG DG	DATE 3-11		
FINISH CHEM FILM, CLEAR, PER MIL-DTL-5541, TYPE 2, REV. F, CLASS 3 (ROHS COMPLIANT)	MANUF .	DATE .	TITLE DUAL DIRECTIONAL COUPLER 800 - 2500 MHz. 500 WATT, 40 dB	
	CAGE CODE: 437R2		SIZE B	P/N IPP-3118
TOLERANCE .XX ±.02 .XXX ±.005 ANG. ±1/2°	SHEET OF 1 1	SCALE 1:1		