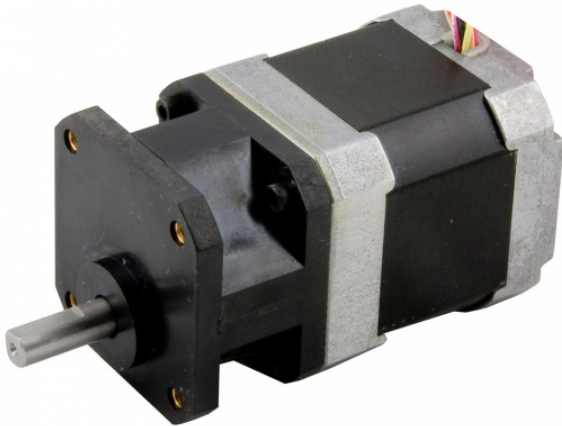


## 17071-2-05S

NEMA 17 Stepper Gearmotor

1pc. - 289.00  
50pc. - 186.41



### **Product Features**

- *Cost effective gearmotor*
- *NEMA 17 step motor with gearhead*
- *5:1 ratio amplifies step motor torque*
- *Offset parallel output shaft*
- *High torque design*
- *Strong composite gearhead body*



## Description

### **Product Description:**

The 17071-2-05S stepper gearmotor is a NEMA 17 step motor and 5:1 gearhead pre-assembled for ease-of-use and greater output torque than the step motor by itself.





A double-shaft version of this gearmotor, part number 17071-2-05D, is also available. Please [call or email](#) for price and delivery.

## Specifications

<b>Part Number:</b>	17071-2-05S
<b>Frame Size:</b>	NEMA 17
<b>Motor Type:</b>	Gearmotor
<b>Motor Length:</b>	2.52 inches
<b>Number of Lead Wires:</b>	8
<b>Lead Wire Configuration:</b>	flying leads, no connector
<b>Lead Wire/Cable Length:</b>	12 inches inches
<b>Lead Wire Gauge:</b>	26 AWG
<b>Unipolar Holding Torque:</b>	105 oz-in
<b>Bipolar Holding Torque:</b>	105 oz-in
<b>Step Angle:</b>	1.8 deg
<b>Bipolar Series Current:</b>	0.85 A/phase
<b>Bipolar Series Resistance:</b>	6.6 Ohms/phase
<b>Bipolar Series Inductance:</b>	14.4 mH/phase
<b>Bipolar Parallel Current:</b>	1.70 A/phase
<b>Bipolar Parallel Resistance:</b>	1.7 Ohms/phase
<b>Bipolar Parallel Inductance:</b>	3.6 mH/phase
<b>Unipolar Current:</b>	1.20 A/phase
<b>Unipolar Resistance:</b>	3.3 Ohms/phase
<b>Unipolar Inductance:</b>	3.6 mH/phase
<b>Rotor Inertia:</b>	8.69E-04 oz-in-sec <sup>2</sup>
<b>Integral Gearhead:</b>	Yes
<b>Weight:</b>	1.16 lbs
<b>Storage Temperature:</b>	-40 to 70 °C
<b>Operating Temperature:</b>	-20 to 50 °C
<b>Insulation Class:</b>	Class B (130 °C)

Maximum Radial Load:	4.5 lbs
Maximum Thrust Load:	3.5 lbs
Radial Play:	0.002
End Play:	0.010

## Downloads

Family Datasheet:	 <a href="#">StepMotorWiring-8-lead-striped.pdf</a>
Datasheet:	<a href="http://s3.amazonaws.com/applied-motion-pdf/17071-2-05S.pdf">http://s3.amazonaws.com/applied-motion-pdf/17071-2-05S.pdf</a>
2D Drawing:	 <a href="#">17-2-05_RevB.pdf</a>  <a href="#">HT17-071P_RevC.pdf</a>
3D Drawing:	 <a href="#">17HT39_17071-2-05S.igs</a>

## Pricing

17071-2-05S Part No. w/ Single Shaft	
1pc.	\$289.00
25pc.	\$248.54
50pc.	\$186.41
100pc.	<a href="#">Request a Quote</a> for 100+ piece pricing.