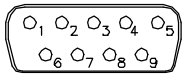


9-PIN CONNECTOR  
WIRING DIAGRAM  
(PHASESHIFTER)

PIN#	OPERATION
2+ 7-	DECREASE PHASE
2- 7+	INCREASE PHASE
1/ 6	MAX. POSITION INDICATOR
3/ 8	MIN. POSITION INDICATOR
5	WIPER (TRACKING POT)
4/ 9	TRACKING POT

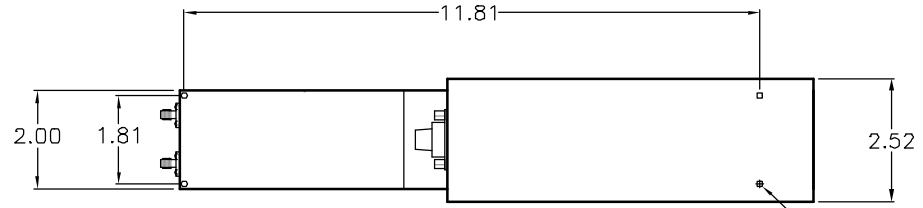


9-PIN D-SUB CONN. (F)

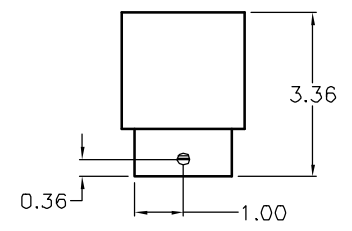
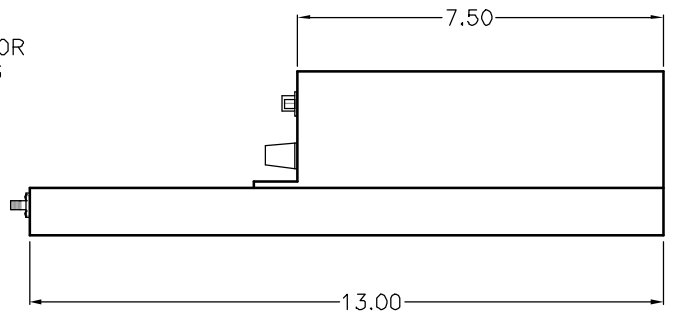
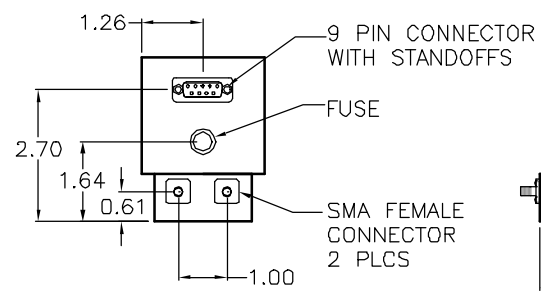
NOTES:

- 24 V DC MOTOR
- 10 K ohm FOLLOWER POT (OPTIONAL)
- 2 AMP FUSE

REVISIONS				
ZONE	REV	DESCRIPTION	DATE	APPROVED
	A	INITIAL RELEASE	06/15/01	
	B	UPDATED PIN-OUT TABLE	9/24/02	



4-40 THREAD MOUNTING HOLES  
0.50 DP FAR SIDE  
4 PLCS



UNLESS OTHERWISE SPECIFIED DIMENSIONS ARE IN INCHES TOLERANCES ARE: FRACTIONS DECIMALS ANGLES ±1/64 .01± ±1/2 DEG. MATERIAL 6061 Aluminum FINISH ATM Standard Grey
--

PROPRIETARY NOTICE  
The information contained in this drawing is proprietary and shall not be used or disclosed without the prior written consent of ATM, Inc.

ADVANCED TECHNICAL MATERIALS, INC.

DRAWN M. ROTUNDA	DATE 06/15/01
CHECKED	
APPROVED	

ADVANCED TECHNICAL MATERIALS, INC. 49 RIDER AVENUE, PATCHOGUE N.Y. 11772 TEL: (631) 289-0363 FAX: (631) 289-0358			
12" PHASESHIFTER OUTLINE MOTORDRIVE			
SIZE A	FSCM NO. OR8N4	DWG NO. 4319W	REV B