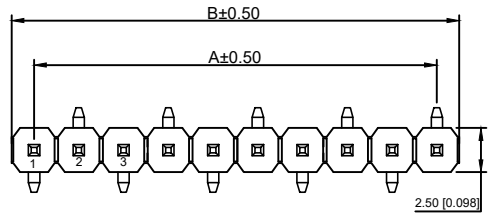
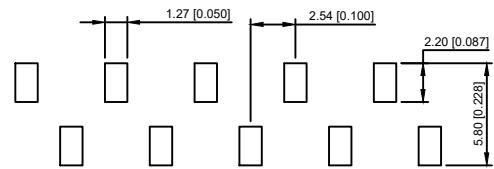
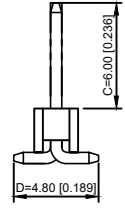
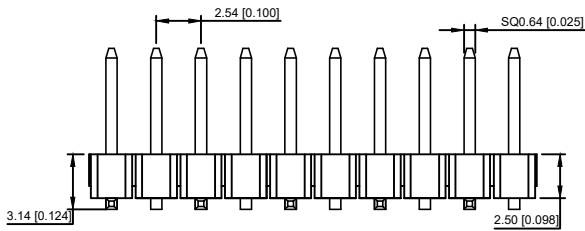


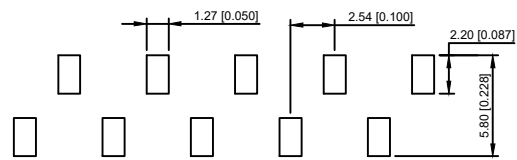
R1 TYPE



R2 TYPE



PCB LAYOUT
R1 TYPE



PCB LAYOUT
R1 TYPE

Pin	A	B
1		2.5400
2	2.5400	5.0800
3	5.0800	7.6200
4	7.6200	10.1600
5	10.1600	12.7000
6	12.7000	15.2400
7	15.2400	17.7800
8	17.7800	20.3200
9	20.3200	22.8600
10	22.8600	25.4000
11	25.4000	27.9400
12	27.9400	30.4800
13	30.4800	33.0200
14	33.0200	35.5600
15	35.5600	38.1000
16	38.1000	40.6400
17	40.6400	43.1800
18	43.1800	45.7200
19	45.7200	48.2600
20	48.2600	50.8000
21	50.8000	53.3400
22	53.3400	55.8800
23	55.8800	58.4200
24	58.4200	60.9600
25	60.9600	63.5000
26	63.5000	66.0400
27	66.0400	68.5800
28	68.5800	71.1200
29	71.1200	73.6600
30	73.6600	76.2000
31	76.2000	78.7400
32	78.7400	81.2800
33	81.2800	83.8200
34	83.8200	86.3600
35	86.3600	88.9000
36	88.9000	91.4400
37	91.4400	93.9800
38	93.9800	96.5200
39	96.5200	99.0600
40	99.0600	101.6000

XKB Connectivity

规格 Specifications:

- 额定电压 Voltage rating:250VAC/DC。
- 额定电流 Current rating:3A AC/DC
- 耐电压 Withstanding voltage:1000V AC/minute
- 温度区间 Temperature range:-40℃to+105℃
- 绝缘电阻 Insulation resistance:≥1000MΩ Min
- 接触电阻 Contact resistance:≤20MΩ Max
- 材料 Material: PA6T 94V-0
- 镀层 Planting Category: 1U"Gold
- 颜色 Color: Blank-Natural color

XKB Connectivity

X6511 W V S - XX H-C60 D48 -X
 ① ② ③ ④ ⑤ ⑥ ⑦ ⑧ ⑨

- ① Series No.
- ② Category:W-Wafer
- ③ Welding Board Angle:V-Stright 180°
- ④ Welding Way:S-SMT
- ⑤ Row No -Pin No:XX-01P-40P
- ⑥ Plastic height: H=2.5mm
- ⑦ Plastic length:C=3.0mm
- ⑧ Plastic length:D=6.0mm
- ⑨ TYPE: R1 ; R2

XKB Connectivity

X6511WVS-XXH-C60D48-X	PA6T 94V-0	Brass	1U"Gold	X6511F
PART NO	Material	Material(Pin)	Finish(Pin)	Suitable XKB Terminal

MARK	DESCRIPTION	DATE	REVISED	APPROVED	UNSPECIFIED TOLERANCES	DSND	DATE	SCALE: N/A	MODEL TYPE: X6511WVS-XXH-C60D48-X		
ΔX					ANGULAR ±5°	DWN	DATE	VIEW:	PART NO.: 2.54mm Crimp Style Connector		
ΔX					L ≤ 4 ±0.2	CHKD	DATE	UNIT: mm/in	DWG NO.:		
ΔX					4 < L ≤ 16 ±0.3	APPD	DATE	SIZE: A4			
					16 < L ≤ 63 ±0.4	XKB INDUSTRIAL PRECISION CO., LIMITED			WEIGHT	SHEET	REVISION
					L > 63 ±0.5				1.0g	1/1	A0