

Table with columns: PART NUMBER, REVISION, DESCRIPTION, FEED TYPE. Includes a diagram of the applicator.

Table with columns: CONVERT TO, PART NUMBERS REQUIRED. Includes sub-tables for PNEUMATIC FEED, SERVO LATCH PLATE, MECHANICAL FEED, SMART APPLICATOR.

Table with columns: CRIMP, SIZE, TYPE. Includes APPLICATOR INSTRUCTIONS 408-10389.

Table with columns: PART NUMBER, INSULATION DIAMETER RANGE. Includes APPLICATOR CONVERSION KITS.

Table with columns: TE TERMINAL, DEUTSCH TERMINAL. Includes TERMINAL DATA: DEUTSCH TERMINAL DEUTSCH CRIMP SPECIFICATION.

Table with columns: TE TERMINAL, DEUTSCH TERMINAL. Includes TERMINAL DATA: DEUTSCH TERMINAL DEUTSCH CRIMP SPECIFICATION.

Table with columns: WIRE SIZE, CRIMP HEIGHT mm [INCH], CRIMP HEIGHT REFERENCE SETTING.

- 1 RECOMMENDED SPARE PARTS
2 GREASE BEARING SURFACES LIGHTLY
3 LUBRICATE DAILY PER THE APPLICATOR INSTRUCTION SHEET SUPPLIED WITH THE APPLICATOR.
4 APPLICATOR SPECIFIC DATA TO BE ENTERED INTO BLANK MEMORY CHIP AT ASSEMBLY.
5 ADJUSTMENT OF THE STRIPPER MAY BE REQUIRED WHEN MOVING THE APPLICATOR BETWEEN BENCH AND LEADMAKER APPLICATIONS.
6 APPLY PART NUMBER 1-23419-5 LOCTITE TO THREADS OF ITEMS 62.
7 GREASE THREADS, GROOVE AND O-RING ON ITEMS 35 & 252.
8 MAGNET, ITEM 166 MUST BE ORIENTED CORRECTLY IN ORDER TO PROPERLY ACTUATE THE COUNTER.
9 CRIMP HEIGHT REFERENCE SETTING WAS THE SETTING USED WHEN THE APPLICATOR WAS QUALIFIED AT THE FACTORY.
10 SPARE FEED CAM STORAGE LOCATION REFER TO INSTRUCTION SHEET FOR ADDITIONAL INFORMATION.
11 TO CONVERT THE APPLICATOR TO A NON-CARRIER CUTTING STYLE, REMOVE ITEM 13 AND ATTACH TO THE LOCATION ON THE BACK SIDE OF THE HOUSING.
12 WHEN ASSEMBLING A NON CRIMP HEIGHT ADJUST APPLICATOR (-6) USE SHIMS FROM ITEM 260 TO ACHIEVE A NOMINAL SHIM HEIGHT OF 3.08.
13 DIMENSION 2.0±0.5 APPLIES TO PIN TERMINALS 1060-12-02XX.
14 DIMENSION 7.9±0.5 APPLIES TO SOCKET TERMINALS 1062-12-02XX.
15 CUT TO LENGTH AT ASSEMBLY.
16 SEE APPROPRIATE APPLICATOR LOG SHEETS FOR APPLIED TERMINALS, WIRE RANGE AND MEMORY CHIP.

\*WARNING
ON INSTALLATION, SET WIRE DISC, ITEM 40 TO LARGEST WIRE SIZE SETTING. USE OF SETTINGS BELOW MINIMUM REQUIRED CRIMP HEIGHT SETTING WILL CAUSE DAMAGE TO CRIMP TOOLING.

Table with columns: PART NO, DESCRIPTION, ITEM NO. Includes items like APPLICATOR SHIM PACK, O-RING, PUSH ROD, BUSHING.

ATLANTIC VERSION
Shown on sheets 1 of 4 & 2 of 4
(Pacific version shown on sheets 3 of 4 & 4 of 4)

Table with columns: SET UP GAUGE, DIST, REVISIONS. Includes revision details for ECR-14-008355, ECR-16-000433, ECR-16-017522.

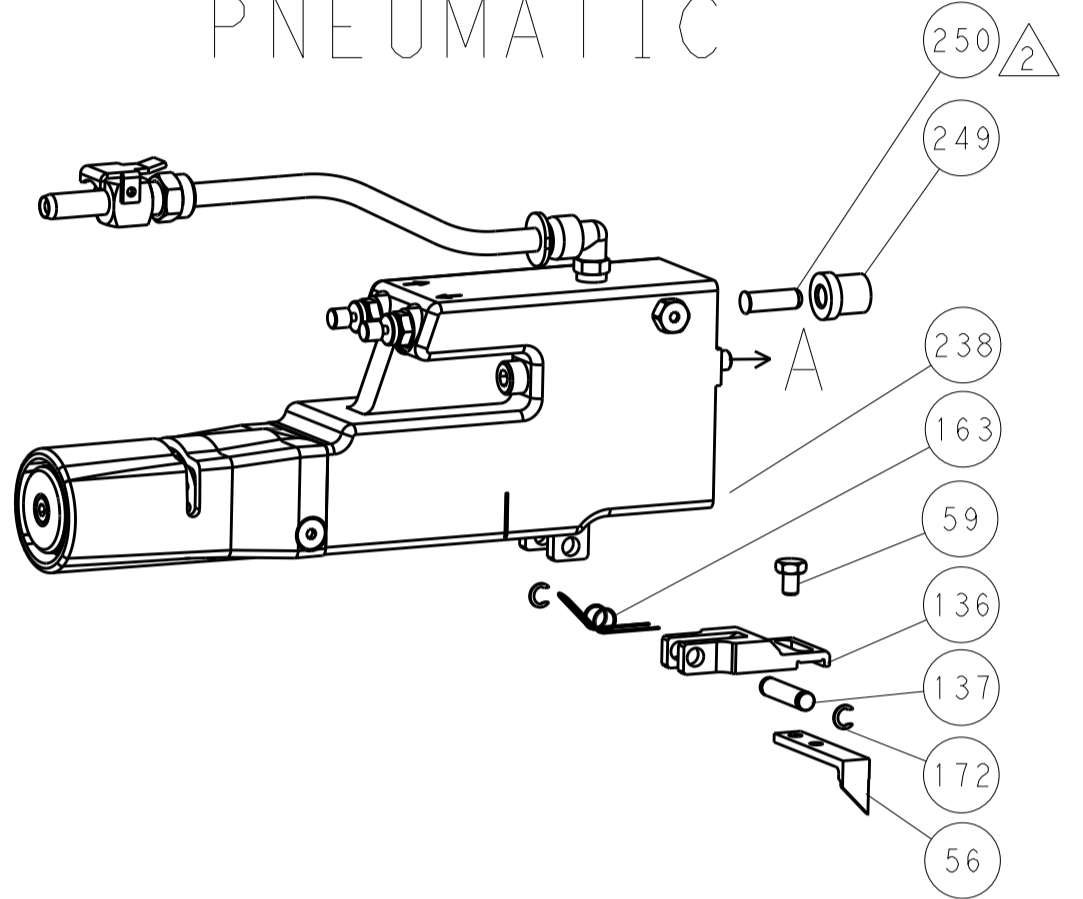
Large table with columns: P, LTM, DESCRIPTION, DATE, DWN, APVD. Lists various components like FEED CAM, DETENT PIN, SPRING, RAM, WASHER, RETAINER, SCR, SHCS, MECHANICAL FEED ASSEMBLY, AIR FEED MODULE, TAG IDENTIFICATION, SPACER, FEEDER, RING, MAGNET, COUNTER, SPRING, PIN, HOLDER, MEMORY CHIP, SERVO FEED LATCH ASM, FEED FINGER ASSEMBLY, ASSY, SPACER, CRIMPER, PRINT, DOCUMENTATION PACKAGE, DEPRESSOR, TAG IDENTIFICATION, SCREW, LIMITER, SCR, PAWL, SHCS, SCR, BUMPER, SPACER, FEED CAM, RAM, DISC, APPLICATOR SHIM PACK, RAM WASHER, FA HEAD, BOLT, SUPPORT, SCR, HEX HEAD, SPACER, STRIP GUIDE, STRIP GUIDE, SCR, WASHER, STRIPPER, INSERT, SPRING, STOP, SHEAR, SHEAR HOLDER, FLOATING SHEAR, ANVIL, SPACER, DEPRESSOR, BLOCK, CRIMPER, CRIMPER, SPACER, CRIMPER, CRIMPER.

LOC		DIST		REVISIONS			
A	66	P	LTM	DESCRIPTION	DATE	OWN	APVD
		-	-	SEE SHEET 1	-	-	-

### FEED TYPE MECHANICAL



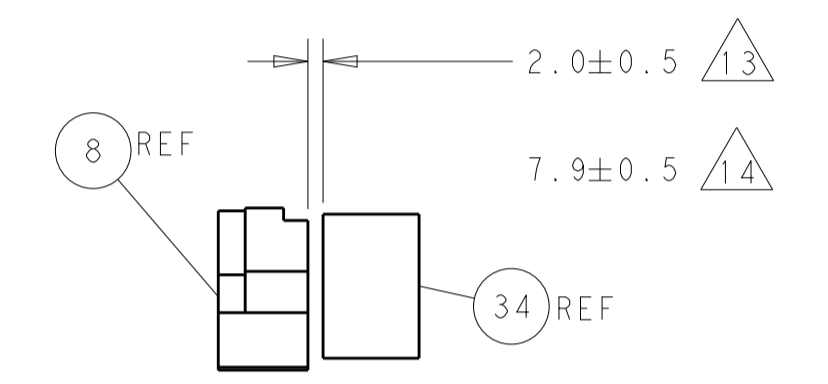
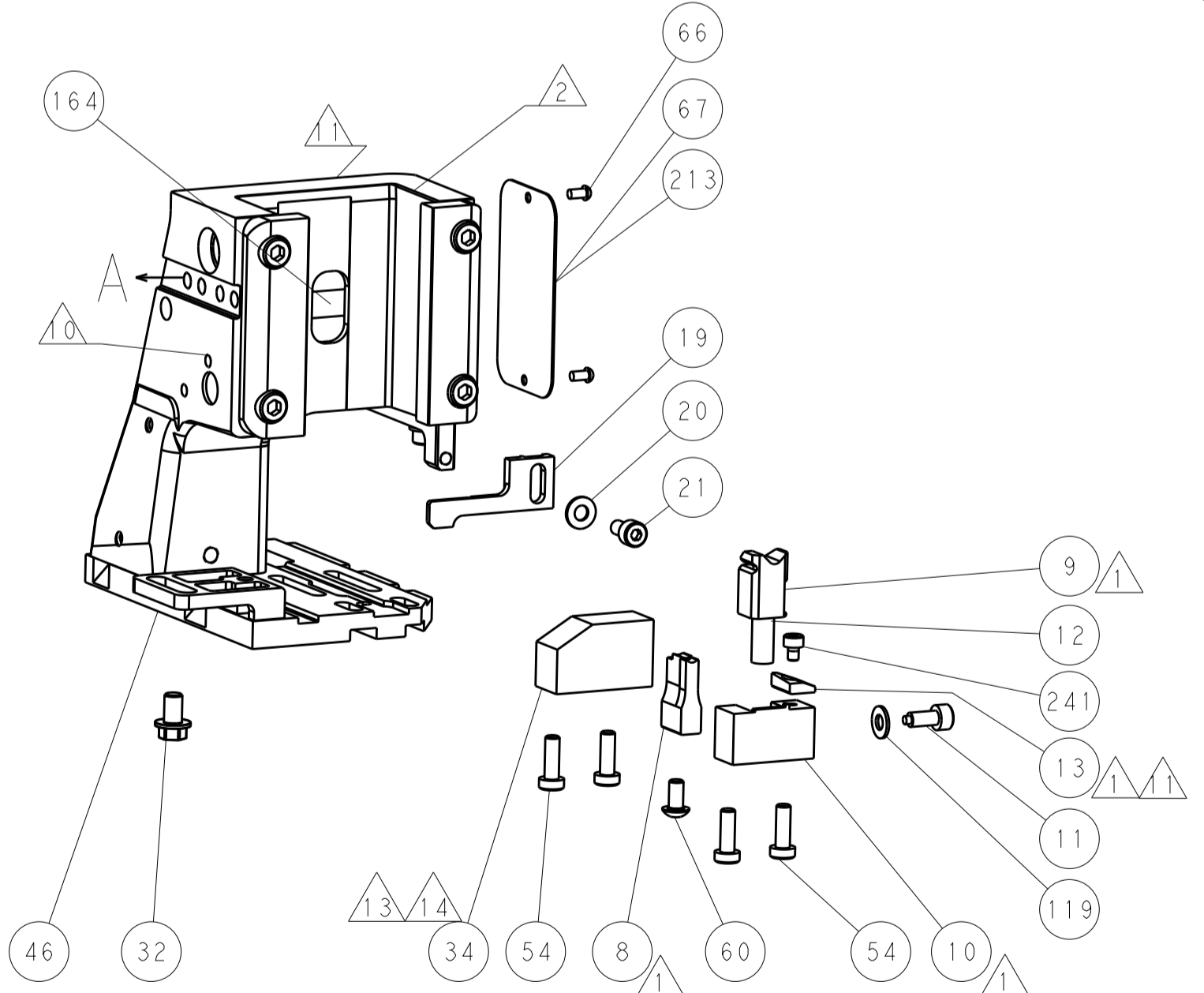
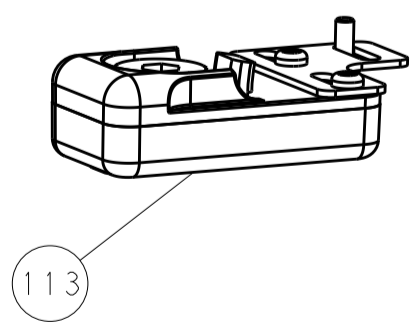
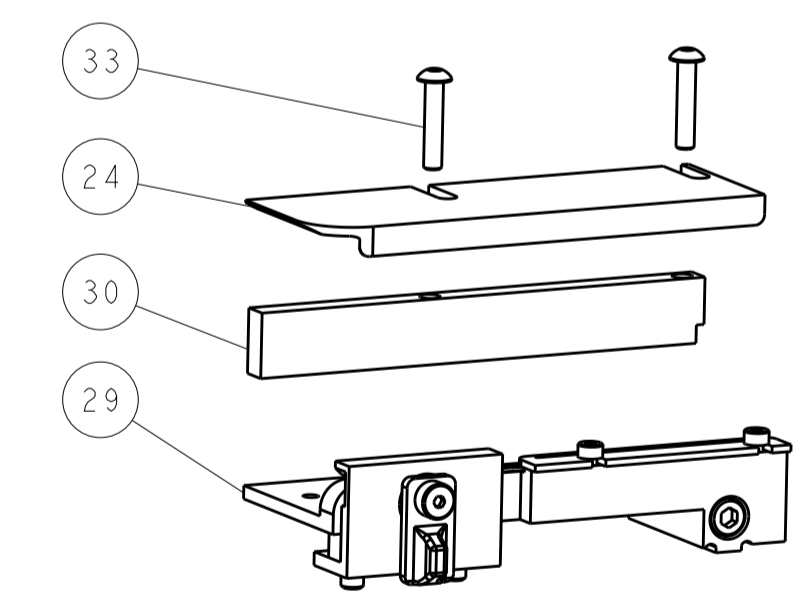
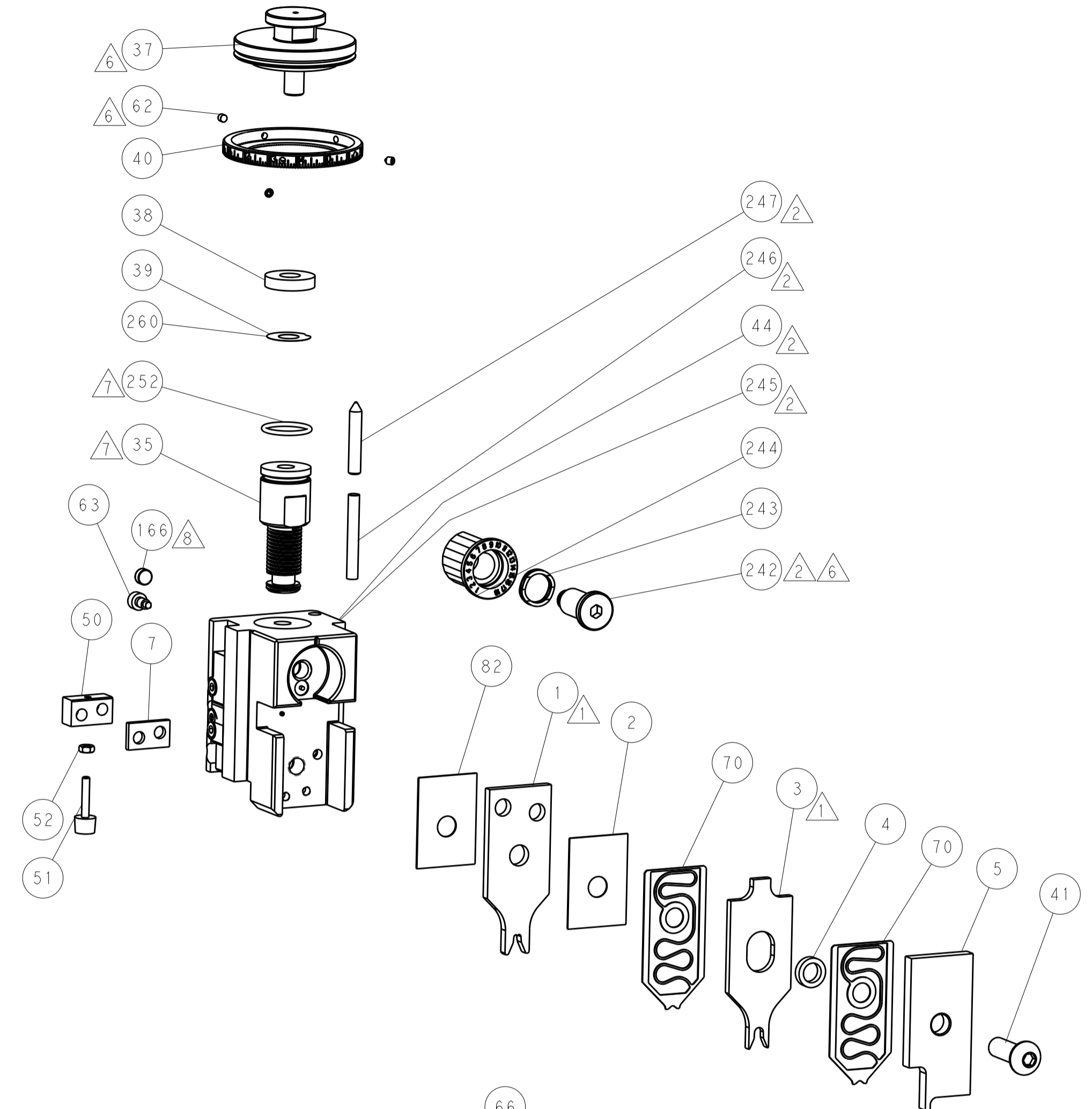
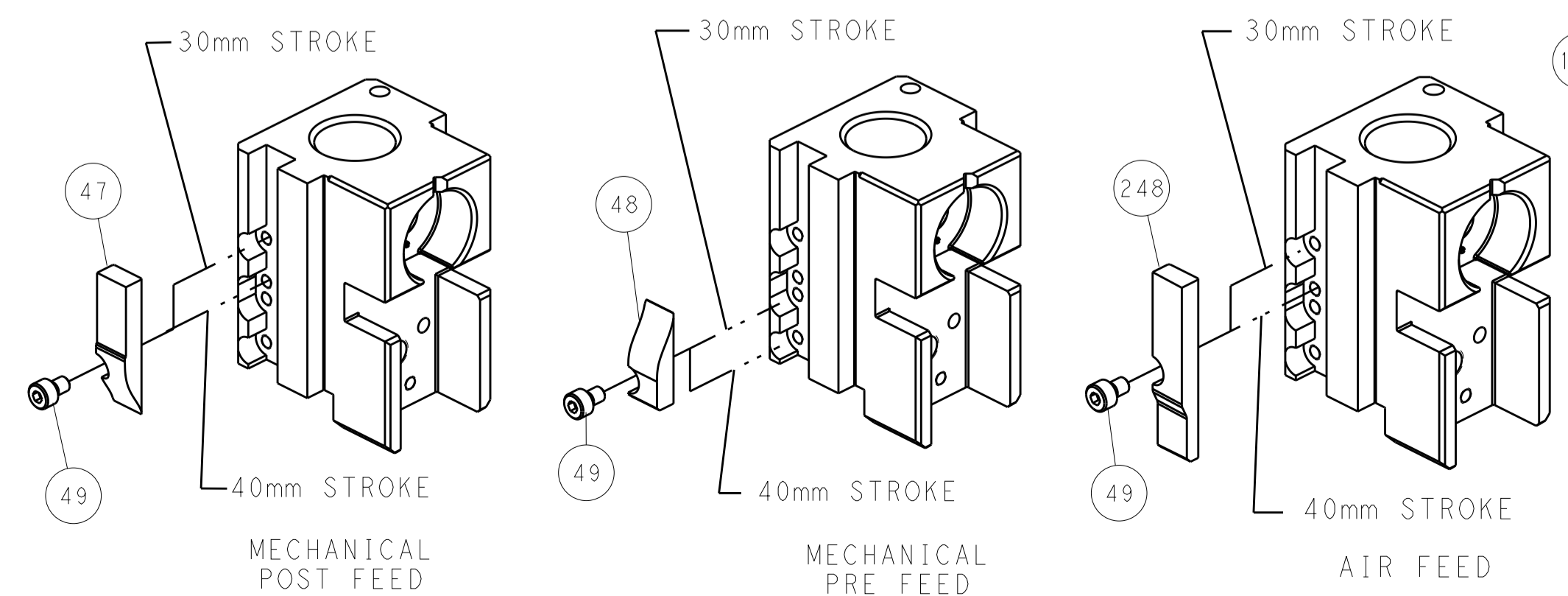
### PNEUMATIC



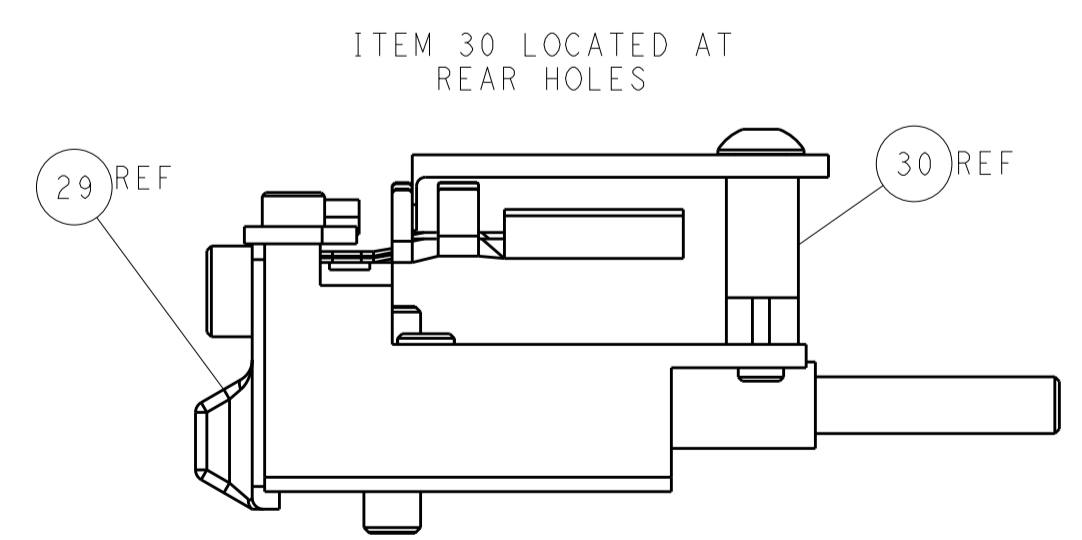
### SERVO LATCH PLATE



### CAM POSITIONS



TERMINAL SUPPORT LOCATION



FEED TRACK POSITION GUIDE BY INSULATION BARREL

**ATLANTIC VERSION**  
 Shown on sheets 1 of 4 & 2 of 4  
 (Pacific version shown on sheets 3 of 4 & 4 of 4)

DIMENSIONS:		TOLERANCES UNLESS OTHERWISE SPECIFIED:		DWG: R. KNEPPER 23-Jan-14		TE Connectivity	
mm	0 PLC ±	1 PLC ±	2 PLC ±	3 PLC ±	4 PLC ±	5 PLC ±	Harrisburg, PA 17105-3608
MATERIAL:		FINISH:		CHK: G. BAILEY 23-Jan-14		NAME: Ocean Side Feed Applicator	
				APVD: M. CLIFFORD 23-Jan-14		PRODUCT SPEC:	
				APPLICATION SPEC:		SIZE: CAGE CODE: DRAWING NO:	
				WEIGHT:		RESTRICTED TO:	
				Customer Accessible Production Drawing		SCALE: 1:2 SHEET 2 OF 4 REV: B1	

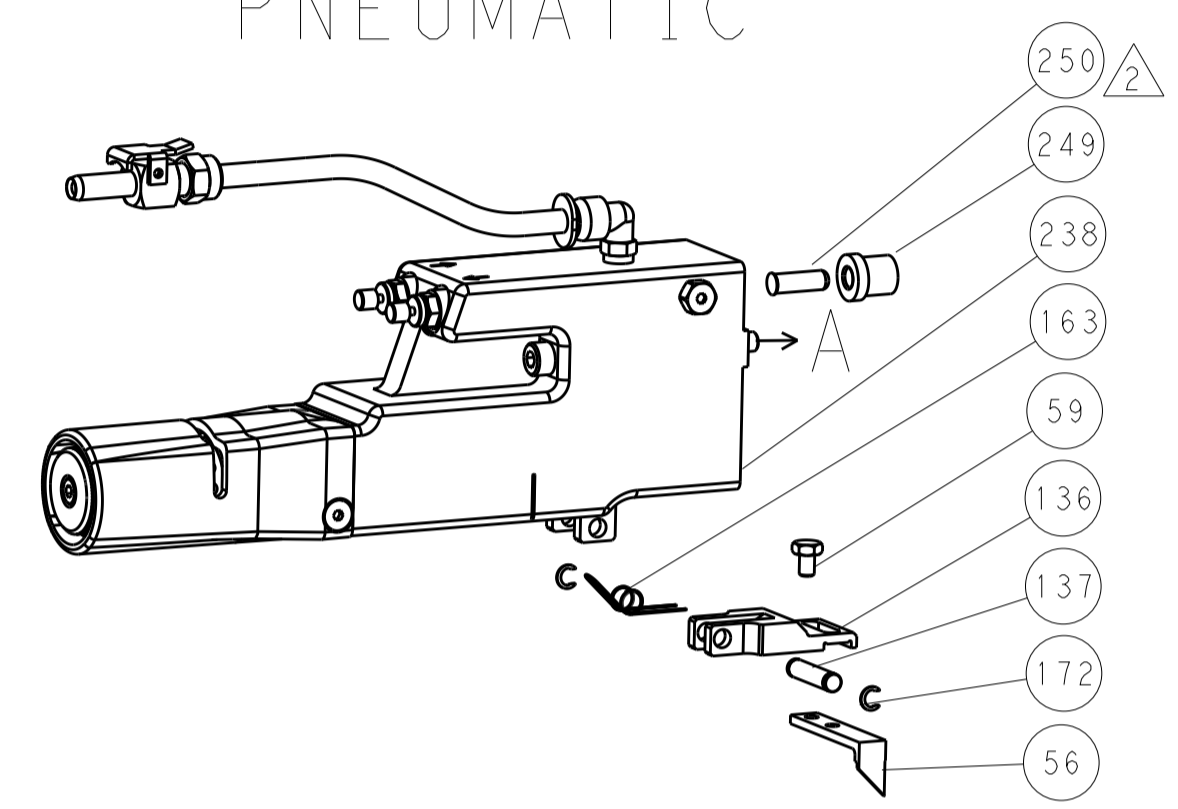


LOC		DIST		REVISIONS			
A	66	P	LTM	DESCRIPTION	DATE	OWN	APVD
		-		SEE SHEET 1			

# FEED TYPE MECHANICAL



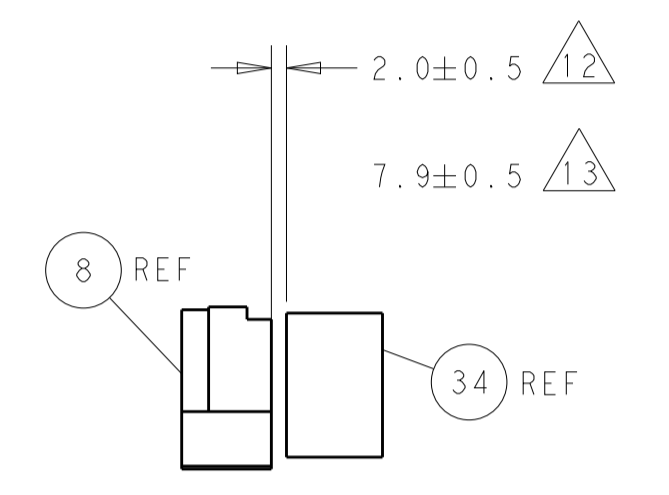
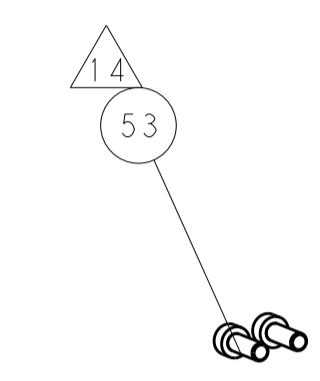
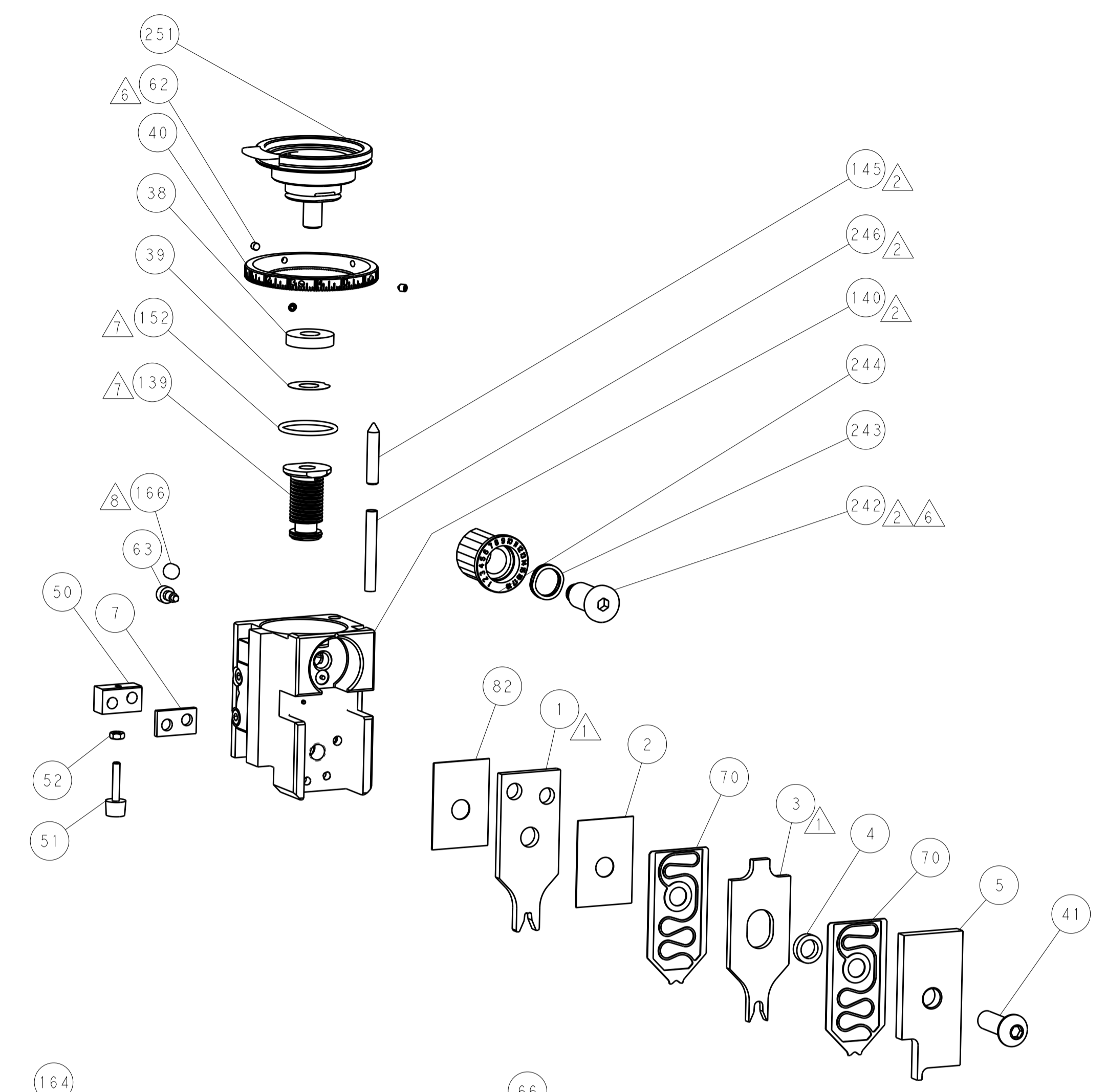
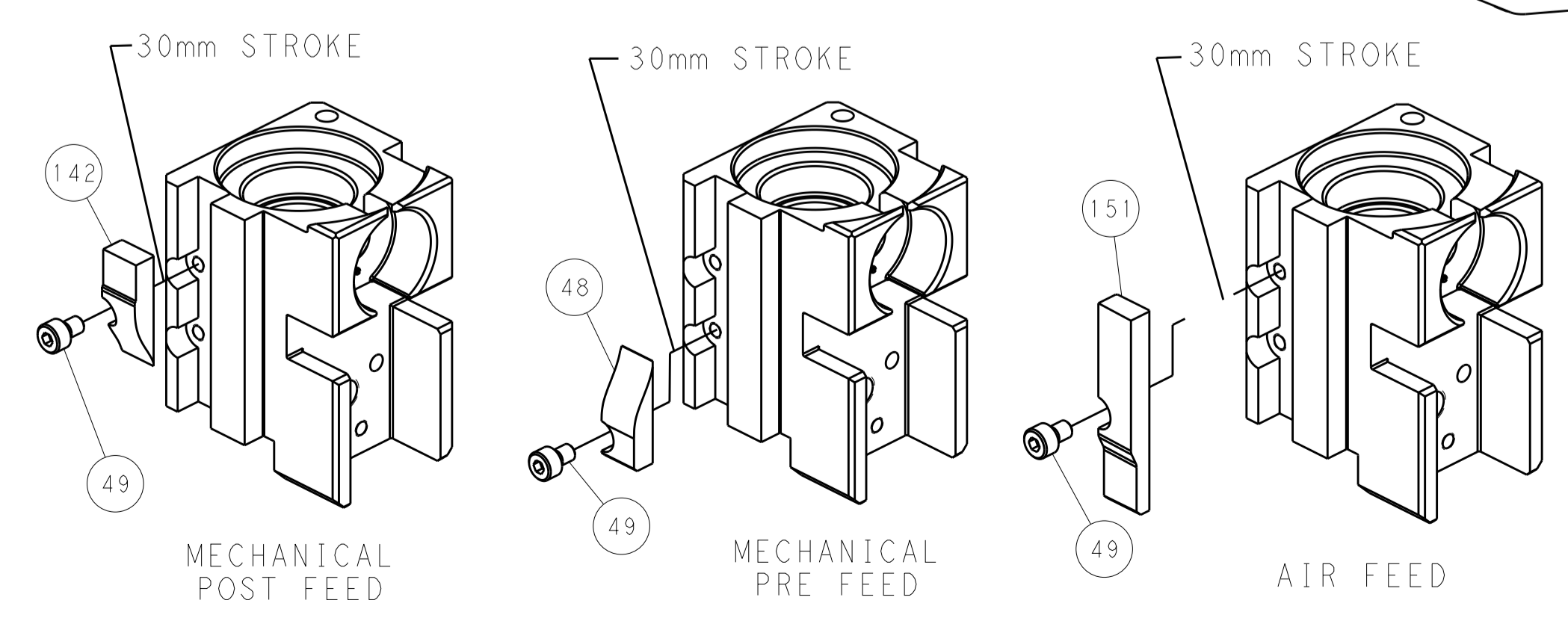
# PNEUMATIC



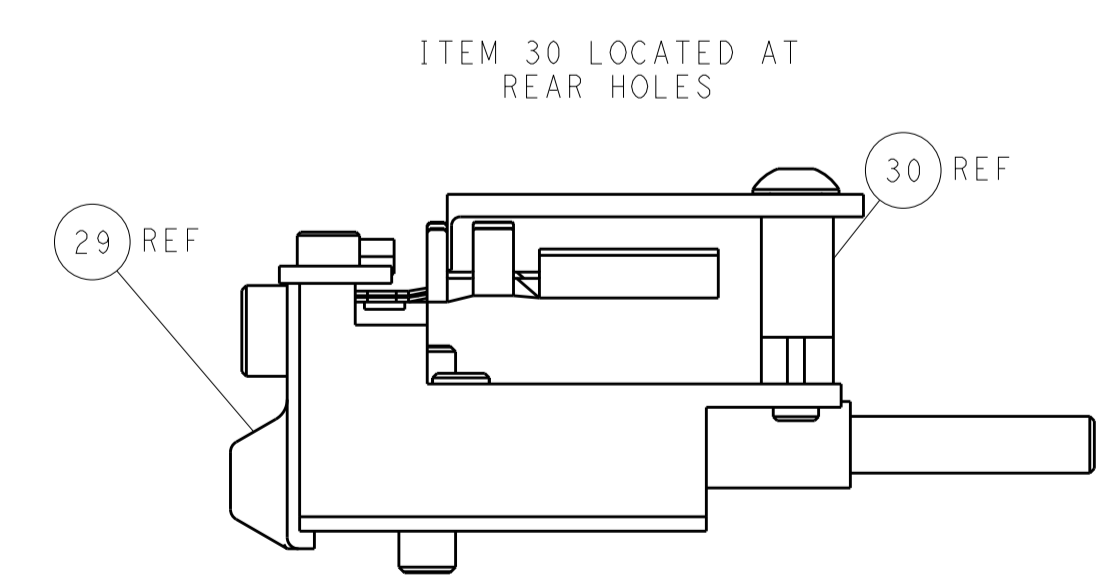
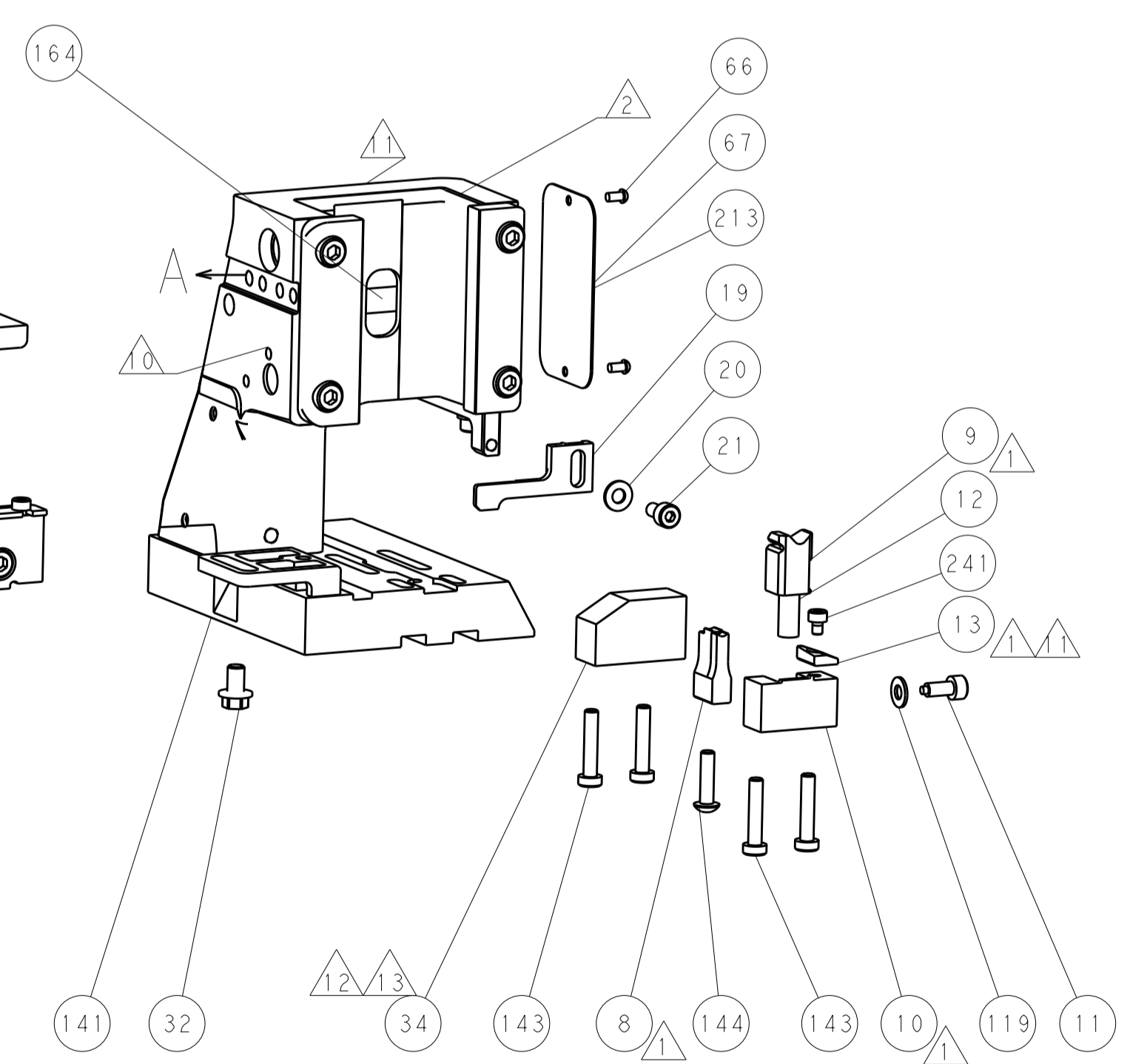
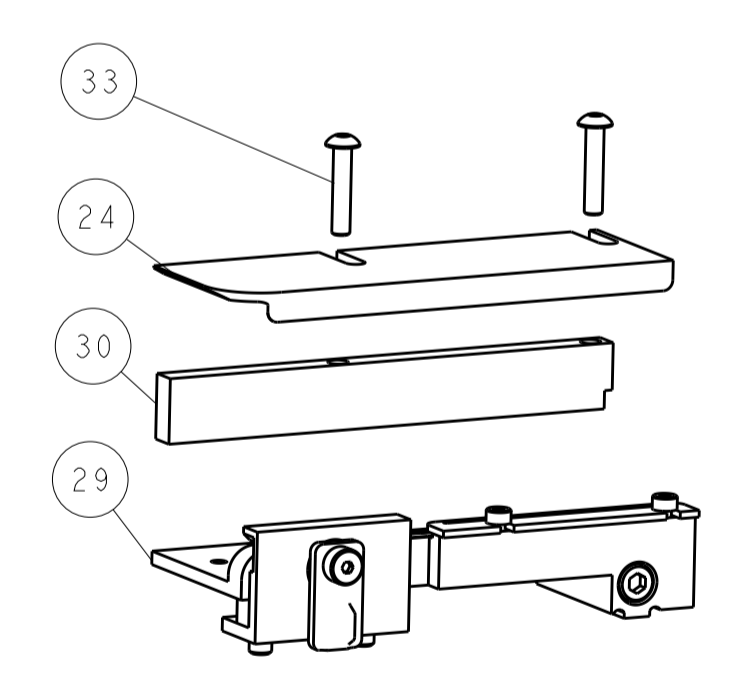
# SERVO LATCH PLATE



# CAM POSITIONS



TERMINAL SUPPORT LOCATION



FEED TRACK POSITION  
GUIDE BY INSULATION BARREL

**PACIFIC VERSION**  
 Shown on sheets 3 of 4 & 4 of 4  
 (Atlantic version shown on sheets 1 of 4 & 2 of 4)

DIMENSIONS:		TOLERANCES UNLESS OTHERWISE SPECIFIED:		DWN R. KNEPPER 23-Jan-14 CHK G. BAILEY 23-Jan-14 APVD M. CLIFFORD 23-Jan-14 NAME PRODUCT SPEC APPLICATION SPEC WEIGHT MATERIAL		STE TE Connectivity Harrisburg, PA 17105-3608 Ocean Side Feed Applicator SIZE CAGE CODE DRAWING NO A1 00779 C=2266128 Customer Accessible Production Drawing SCALE 1:2 SHEET 4 OF 4 REV B1		
mm	0 PLC ±	1 PLC ±	2 PLC ±	3 PLC ±	4 PLC ±	ANGLES ±	FINISH ±	RESTRICTED TO