

# RL-2227

## FILTER CHOKES

### DESCRIPTION

- Filter Chokes

### ENVIRONMENTAL DATA

- Storage temperature range: -55°C to +130°C
- Operating temperature range: -40°C to +130°C

### PACKAGING INFORMATION

- Packaging information: pg. 493

### FEATURES & APPLICATIONS

- High current ferrite core inductors ideally suited for noise filtering in switching regulated power supplies, power filter networks, power amplifiers, SCR, and TRIAC control circuits
- Polyolefin shrink tube cover is used to protect and insulate outer windings
- Manufactured with pre-tinned radial leads for easy PCB insertion

Verify operation with sample in actual circuit. Order samples at [www.rencousa.com](http://www.rencousa.com).

### MECHANICAL DIMENSIONS

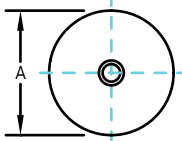
U.S. Standard (mm)

| PART NUMBER    | A (MAX.)      | B (MAX.)      | C (MIN.)      |
|----------------|---------------|---------------|---------------|
| RL-2227-1-50   | 0.475 (12.06) | 0.800 (20.32) | 0.500 (12.70) |
| RL-2227-1-100  | 0.475 (12.06) | 0.800 (20.32) | 0.687 (17.45) |
| RL-2227-1-250  | 0.475 (12.06) | 1.050 (26.67) | 0.437 (11.10) |
| RL-2227-1-500  | 0.550 (13.97) | 1.050 (26.67) | 0.750 (19.05) |
| RL-2227-1-1000 | 0.550 (13.97) | 1.225 (30.80) | 0.937 (23.80) |

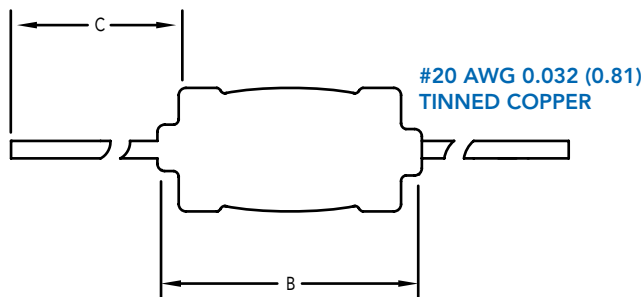
| PART NUMBER | PART WEIGHT    |
|-------------|----------------|
| RL-2227-1   | 12.0g (0.43oz) |
| RL-2227-2   | 13.0g (0.46oz) |
| RL-2227-3   | 14.0g (0.49oz) |
| RL-2227-5   | 18.0g (0.64oz) |

DIMENSIONS CONTINUED ON NEXT PAGE

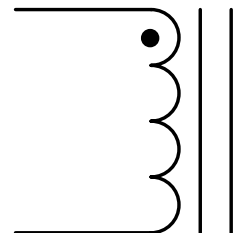
FRONT VIEW



SIDE VIEW



SCHEMATIC



**RENCO ELECTRONICS INC.**

595 International Place, Rockledge, FL 32955-4200 USA • [www.rencousa.com](http://www.rencousa.com) • ISO 9001 Certified  
Toll Free Engineering Hot Line: 800.645.5828 • P: 321.637.1000 • F: 321.637.1600



# RL-2227

## MECHANICAL DIMENSIONS (CONTINUED)

U.S. Standard (mm)

| Renco Part No.<br>RL-2227 | A<br>(MAX.)   | B<br>(MAX.)   | C<br>(MIN.)  |
|---------------------------|---------------|---------------|--------------|
| RL-2227-2-27              | 0.500 (12.70) | 0.800 (20.32) | 1.25 (31.75) |
| RL-2227-2-50              | 0.500 (12.70) | 0.800 (20.32) | 1.25 (31.75) |
| RL-2227-2-100             | 0.500 (12.70) | 0.920 (23.37) | 1.25 (31.75) |
| RL-2227-2-250             | 0.600 (15.24) | 0.920 (23.37) | 1.25 (31.75) |
| RL-2227-2-500             | 0.750 (19.05) | 1.050 (26.67) | 1.25 (31.75) |
| RL-2227-3-5               | 0.475 (12.06) | 0.800 (20.32) | 1.25 (31.75) |
| RL-2227-3-10              | 0.475 (12.06) | 0.920 (23.37) | 1.25 (31.75) |
| RL-2227-3-27              | 0.550 (13.97) | 0.800 (20.32) | 1.25 (31.75) |
| RL-2227-3-50              | 0.550 (13.97) | 0.920 (23.37) | 1.25 (31.75) |
| RL-2227-3-100             | 0.550 (13.97) | 1.225 (30.80) | 1.25 (31.75) |
| RL-2227-5-5               | 0.475 (12.06) | 1.050 (26.67) | 1.00 (25.40) |
| RL-2227-5-10              | 0.475 (12.06) | 1.050 (26.67) | 1.00 (25.40) |
| RL-2227-5-27              | 0.700 (17.78) | 1.050 (26.67) | 1.00 (25.40) |
| RL-2227-5-50              | 0.700 (17.78) | 1.050 (26.67) | 1.00 (25.40) |
| RL-2227-5-100             | 0.700 (17.78) | 1.300 (33.02) | 1.00 (25.40) |

## ELECTRICAL SPECIFICATIONS

| Renco Part No.<br>RL-2227 | Inductance<br>( $\mu$ H) | I <sub>rms</sub><br>(A) | DCR Max.<br>(Ohms) | SRF  |
|---------------------------|--------------------------|-------------------------|--------------------|------|
| RL-2227-1-50              | 50.0                     | 1.0                     | 0.120              | 4.0  |
| RL-2227-1-100             | 100.0                    | 1.0                     | 0.180              | 2.0  |
| RL-2227-1-250             | 250.0                    | 1.0                     | 0.300              | 1.0  |
| RL-2227-1-500             | 500.0                    | 1.0                     | 0.500              | 0.8  |
| RL-2227-1-1000            | 1000.0                   | 1.0                     | 0.600              | 0.5  |
| RL-2227-2-27              | 27.0                     | 2.0                     | 0.085              | 5.5  |
| RL-2227-2-50              | 50.0                     | 2.0                     | 0.100              | 4.0  |
| RL-2227-2-100             | 100.0                    | 2.0                     | 0.150              | 2.0  |
| RL-2227-2-250             | 250.0                    | 2.0                     | 0.250              | 1.0  |
| RL-2227-2-500             | 500.0                    | 2.0                     | 0.450              | 0.5  |
| RL-2227-3-5               | 5.0                      | 3.0                     | 0.025              | 25.0 |
| RL-2227-3-10              | 10.0                     | 3.0                     | 0.035              | 20.0 |
| RL-2227-3-27              | 27.0                     | 3.0                     | 0.050              | 6.0  |
| RL-2227-3-50              | 50.0                     | 3.0                     | 0.065              | 4.0  |
| RL-2227-3-100             | 100.0                    | 3.0                     | 0.075              | 2.0  |
| RL-2227-5-5               | 5.0                      | 5.0                     | 0.015              | 50.0 |
| RL-2227-5-10              | 10.0                     | 5.0                     | 0.025              | 40.0 |
| RL-2227-5-27              | 27.0                     | 5.0                     | 0.035              | 7.0  |
| RL-2227-5-50              | 50.0                     | 5.0                     | 0.050              | 2.0  |
| RL-2227-5-100             | 100.0                    | 5.0                     | 0.065              | 1.0  |

### NOTES:

1. ELECTRICAL SPECIFICATIONS MEASURED AT 25°C
2. I<sub>sat</sub> - DC CURRENT THAT WILL CAUSE INDUCTANCE TO DROP BY 5%
3. I<sub>rms</sub> - CURRENT THAT CAUSES THE TEMPERATURE TO RISE APPROX. 40°C ABOVE AMBIENT OF 25°C
4. INDUCTANCE  $\pm$  10% TESTED AT 10 kHz, 0.1 V<sub>rms</sub>
5. PART FINISHED WITH 135°C POLYOLEFIN SLEEVING THAT MEETS UL-224 VW-1



**RENCO ELECTRONICS INC.**

595 International Place, Rockledge, FL 32955-4200 USA • [www.rencousa.com](http://www.rencousa.com) • ISO 9001 Certified  
Toll Free Engineering Hot Line: 800.645.5828 • P: 321.637.1000 • F: 321.637.1600

