

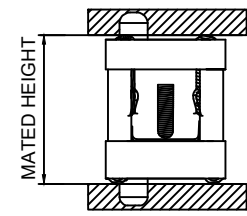
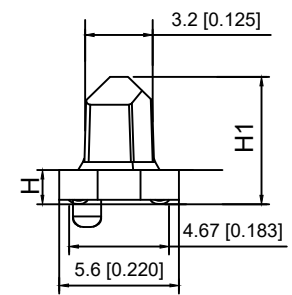
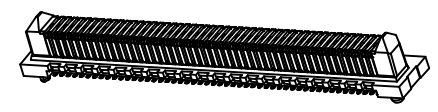
Recommended PCB Layout

Specifications:

规格:
 Voltage rating:300V AC/DC
 额定电压: 300V AC/DC
 Current rating:1A AC/DC
 额定电流: 1A AC/DC
 Withstanding voltage:500V AC/minute
 耐受电压: 500V AC/分钟
 Temperature range:-55°C-+125°C
 温度范围: -55°C-+125°C
 Insulation resistance: 1000MΩ min
 绝缘电阻: 1000MΩ Min
 Contact resistance:40mΩ Max
 接触电阻: 40mΩ Max

X0811 W V S- XX X S-LP V01
 ① ② ③ ④ ⑤ ⑥ ⑦ ⑧ ⑨

- 1.Series No
- 2.Category:W-WAFER
- 3.Welding Board Angle:V-Straight 180°
- 4.Welding Way:S-SMT
- 5.Row No-Pin No:XX-10Pin-200Pin
- 6.Height:A=2.0; B=5.0; C=8.0; D=9.0mm
- 7.Special No:S-With positioning Column
- 8.Material:LP-LCP UL94V-0
- 9.Plating: V01-Gold Flash



Poles	A	B	C	D
10	10.00	8.20	3.20	6.80
20	14.00	12.20	7.20	10.80
22	14.80	13.00	8.00	11.60
24	15.60	13.80	8.80	12.40
26	16.40	14.60	9.60	13.20
30	18.00	16.20	11.20	14.80
40	22.00	20.20	15.20	18.80
50	26.00	24.20	19.20	22.80
60	30.00	28.20	23.20	26.80
70	34.00	32.20	27.20	30.80
80	38.00	36.20	31.20	34.80
100	46.00	44.20	39.20	42.80
120	54.00	52.20	47.20	50.80
140	62.00	60.20	55.20	58.80
150	66.00	64.20	59.20	62.80
200	86.00	84.20	79.20	82.00

HEIGHT	H	H1
2.00	1.61	5.97
5.00	4.61	8.91
8.00	7.61	11.91
9.00	8.61	12.91

MATED HEIGHT	Female		
	5.0	7.0	9.0
2.0	7.00	9.00	11.00
5.0	10.00	12.00	14.00
8.0	13.00	15.00	17.00
9.0	14.00	16.00	18.00

X0811WVS-XXXS-LPV01	LCP	Phosphor Bronze	X0811F
PART NO	Material	Material(Pin)	Suitable XKB Female

MARK	DESCRIPTION	DATE	REVISED	APPROVED	UNSPECIFIED TOLERANCES
ΔX					ANGULAR ±5°
ΔX					L ≤ 4 ±0.2
ΔX					4 < L ≤ 16 ±0.3
					16 < L ≤ 63 ±0.4
					L > 63 ±0.5



XKB INDUSTRIAL PRECISION CO.,LIMITED

DSND	SCALE: N/A	MODEL TYPE: 0.80mm BTB Style Connector
DWN	VIEW:	PART NO.: X0811WVS-XXXS-LPV01
CHKD	UNIT: mm/in	DWG NO.: X-X0811WVS-XXXS-LPV01
APPD	SIZE: A4	WEIGHT SHEET REVISION 1/1 A0