

DASH NO. RANGE	"D" DIA. RANGE	"E" DIMENSION	"R" RADIUS	"G" GAP	"T" GAUGE
-4 THRU -6	1/4" TO 3/8"	"D"/2 + .623	.06	.06	.031
-7 THRU -16	7/16" TO 1"				.050
-17 THRU -96	1-1/16" TO 6"	"D"/2 + .643	.12	.12	.050

MATERIAL & FINISH CODES:

METAL: "NO CODE" 1008/1020 LOW CARBON STEEL PER ASTM A 1008, ASTM A 109, QQ-S-698
 FINISH: ZINC PLATE GOLD PER ASTM B 633, Fe/Zn 8, TY. II 1

"P" 1008/1020 LOW CARBON STEEL PER ASTM A 1008, ASTM A 109, QQ-S-698
 FINISH: ZINC PLATE GOLD PLUS SEALER PER ASTM B 633, Fe/Zn 13, TY. II

"D" 2024-T42 ALUMINUM ALLOY PER AMS-QQ-A-250/5
 FINISH: NONE

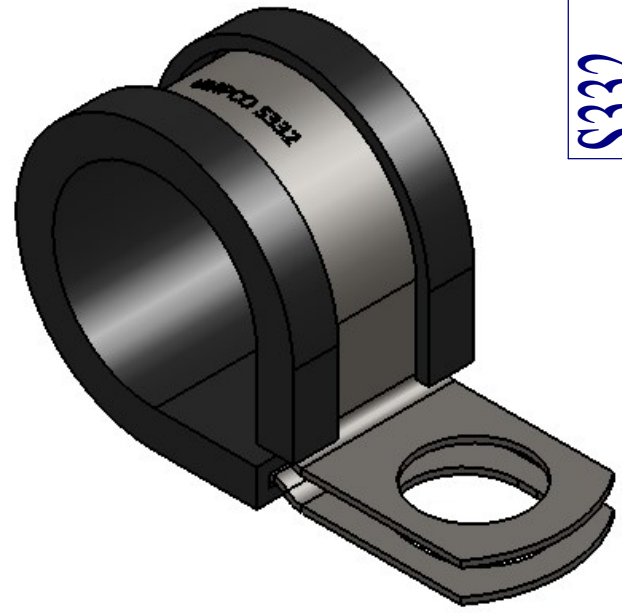
"SS" 304/321 STAINLESS STEEL PER AMS 5513/AMS 5510
 FINISH: NONE

CUSHION: "G" GENERAL PURPOSE EPDM PER SAE J200 M3 BA 710 C12
 COLOR: BLACK

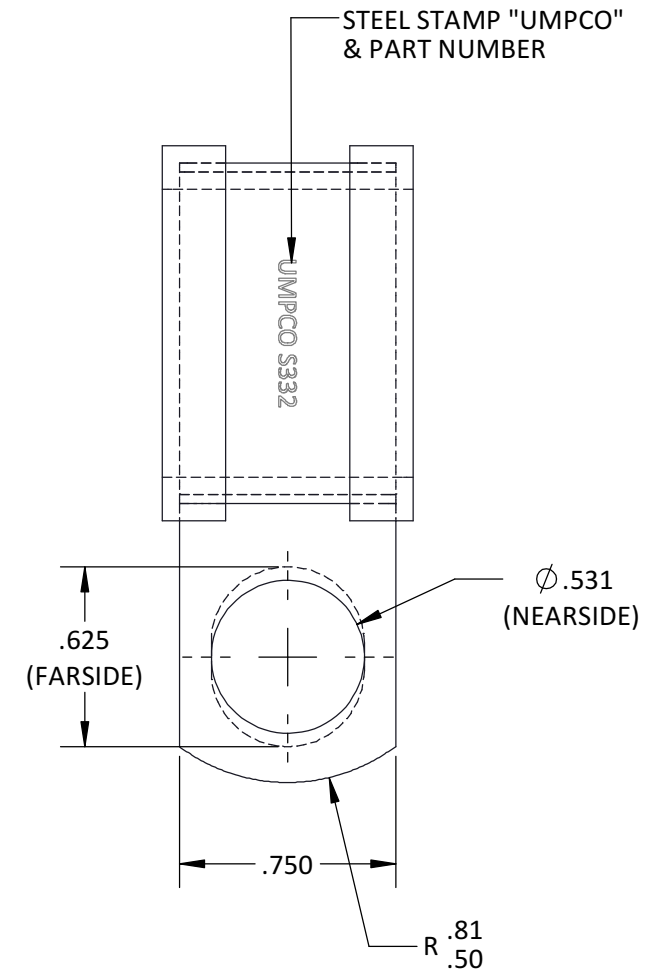
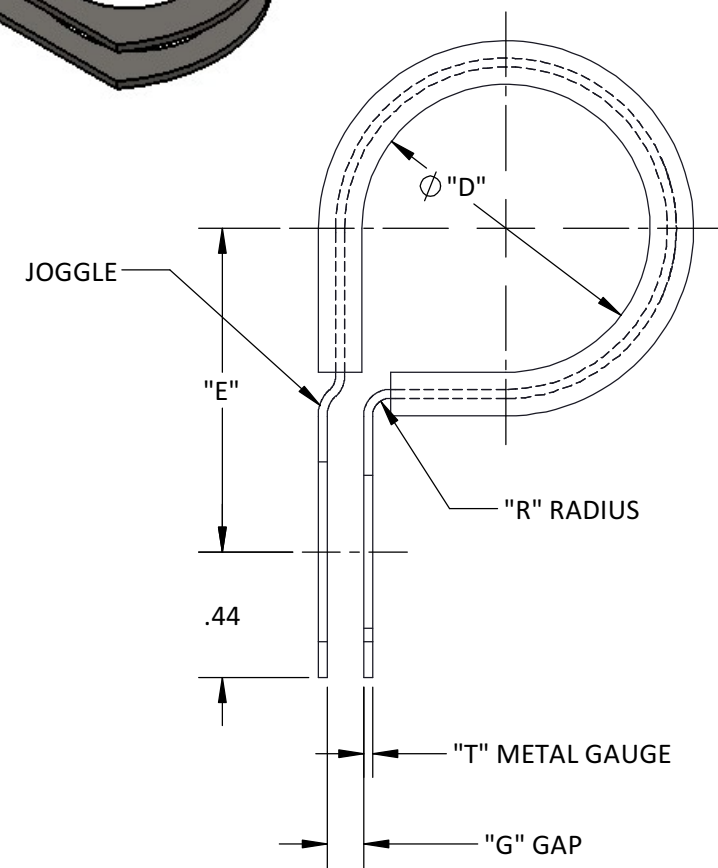
"H" GENERAL PURPOSE SILICONE PER AMS 3303 WITH 100 PSI MIN. TEAR
 COLOR: RED/ORANGE

"N" GENERAL PURPOSE NEOPRENE PER AMS 3209
 COLOR: BLACK

"T" TEFLON SKIVED PER AMS 3652
 COLOR: WHITE

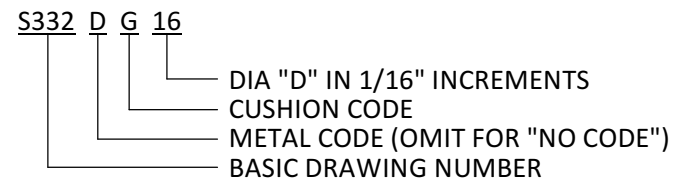


S332



EXAMPLE OF PART CALLOUT:

1" DIA. ALUM. CLAMP W/EPDM CUSHION



NOTES:

- 1) OPTIONAL FINISH: CADMIUM PLATE GOLD PER AMS-QQ-P-416, TY. II, CL. 2
- 2) CLAMPS FURNISHED IN THE NORMAL OPEN (SPRINGBACK) CONDITION.
- 3) INSPECT PER MIL-C-8603 CLOSURE TEST.

SHEET 1 OF 1

REFERENCES:							
LIMITS ON DIMENSIONS UNLESS OTHERWISE SPECIFIED:	ANGULAR:	X	± 5°	UMPCO . INC. 7100 LAMPSON AVE. P.O. BOX 5158 GARDEN GROVE, CA. 92846		FSCM/CAGE CODE No. 18076	
	DECIMAL:	.XX	± .03			KEL	KEL
GENERAL MACHINE FINISHES EXCEPT AS NOTED:	PROPRIETARY AND CONFIDENTIAL THE INFORMATION CONTAINED IN THIS DRAWING IS THE SOLE PROPERTY OF UMPCO, INC. ANY REPRODUCTION IN PART OR AS A WHOLE WITHOUT THE WRITTEN PERMISSION OF UMPCO, INC IS PROHIBITED.			11/01/76 11/01/76 04/22/99		DRAWN CHECKED ENGR	
	INTERPRET GEOMETRIC TOLERANCING PER: ASME-Y14.5M			CLAMP, LOOP-CUSHIONED, 1/2" MOUNTING SCREW		SCALE: NONE	
REMOVE ALL BURRS AND BREAK SHARP EDGES .010 MAX	ACT. WGHT.	-		PART AND/OR ASSEMBLY DESCRIPTION	SIZE B S332		
	CALC. WGHT.	-			PRINT NUMBER		