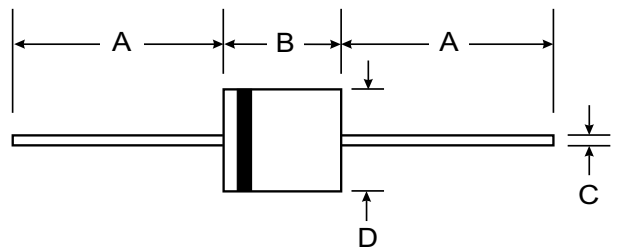
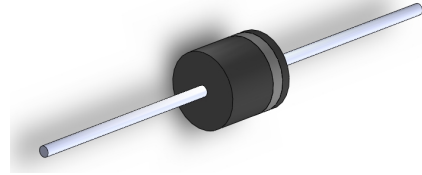


VOLTAGE RANGE: 17- 280V

POWER: 10000Watts

Features

- Glass passivated junction
- 10000W Peak Pulse Power capability on 10/1000 μ s waveform
- Excellent clamping capability
- Repetition rate (duty cycle):0.05%
- Low incremental surge resistance
- Fast response time: typically less than 1.0 ps from 0 volts to BV Bidirectional less than 10 ns
- High temperature soldering guaranteed: 265°C/10 seconds/.375", (9.5mm) lead length, 5lbs., (2.3kg) tension



| R-6 | | |
|----------------------|------|-----|
| Dim | Min | Max |
| A | 25.4 | — |
| B | 8.6 | 9.1 |
| C | 1.2 | 1.3 |
| All Dimensions in mm | | |

Mechanical Data

- Case : R-6
- Terminals: Plated Axial leads, solderable per MIL-STD-750, Method 2026
- Mounting Position: Any
- Weight: 0.07 ounce, 2.1 gram



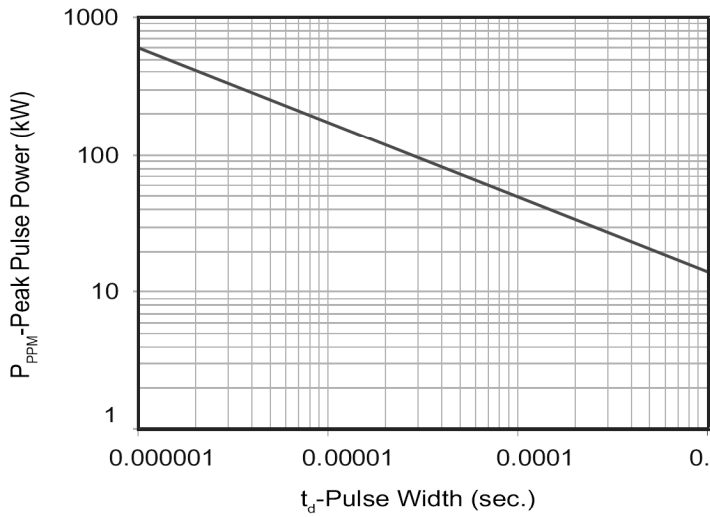
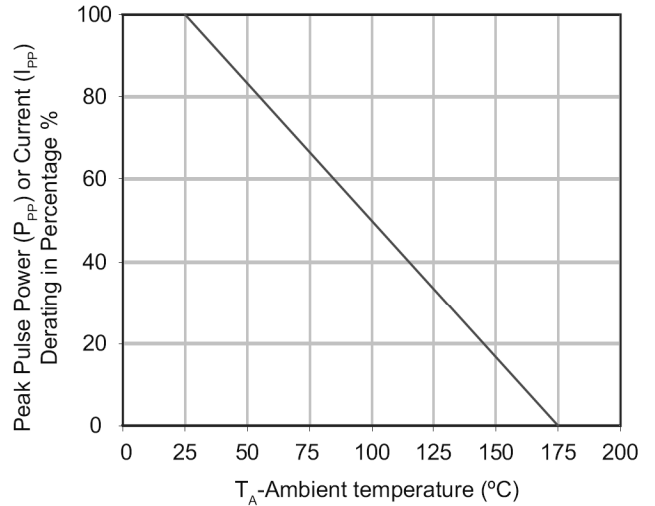
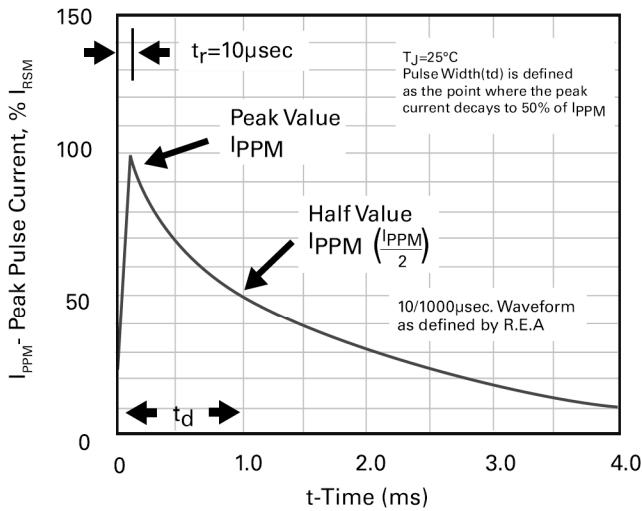
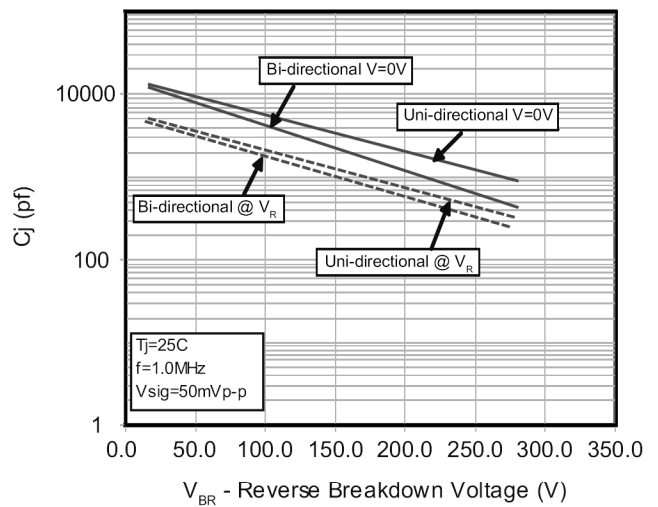
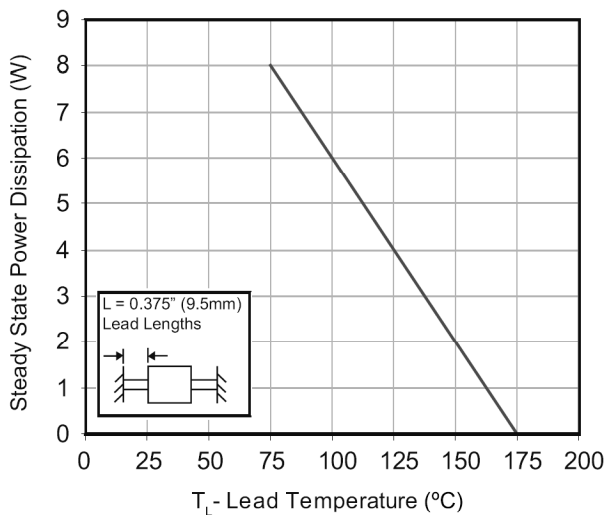
MAXIMUM RATINGS

Rating at 25 °C ambient temperature unless otherwise specified.

| Characteristic | Symbol | Value | Unit |
|--|----------------|------------------|-------|
| Peak Pulse Power Dissipation on 10/1000 μ s | P_{PPM} | Minimum 10000 | Watts |
| Peak Pulse Current of on 10/1000 μ s waveform (Note 1,FIG.3) | I_{PPM} | SEE TABLE 1 | Amps |
| Steady State Power Dissipation at $T_L = 75^\circ\text{C}$ | $P_{M(AV)}$ | 8 | Watts |
| Peak Forward Surge Current, 1/20 second / 25°C (JEDEC Method) | I_{FSM} | 400 | Amps |
| Operating junction and Storage Temperature Range | T_J, T_{STG} | -55 to + 175 | °C |

| TYPE | | Reverse Stand-Off Voltage | Breakdown Voltage Min. @I _T | Breakdown Voltage Max. @ I _T | Test Current | Peak Pulse Current | Reverse Leakage @V _{RWM} | Maximum Clamping Voltage @I _{PP} |
|-----------|------------|---------------------------|--|---|---------------------|---------------------|-----------------------------------|---|
| (UNI) | (BI) | V _{RWM} (V) | V _{BR MIN} (V) | V _{BR MAX} (V) | I _T (mA) | I _{PP} (A) | I _R (uA) | V _C (V) |
| 10KPA17A | 10KPA17CA | 17 | 18.99 | 20.79 | 50 | 515.4 | 5000 | 29.3 |
| 10KPA18A | 10KPA18CA | 18 | 20.11 | 22.01 | 50 | 488.7 | 5000 | 30.9 |
| 10KPA20A | 10KPA20CA | 20 | 22.34 | 24.46 | 20 | 440.2 | 1500 | 34.3 |
| 10KPA22A | 10KPA22CA | 22 | 24.57 | 26.91 | 10 | 407.0 | 500 | 37.1 |
| 10KPA24A | 10KPA24CA | 24 | 26.81 | 29.35 | 5 | 371.0 | 150 | 40.7 |
| 10KPA26A | 10KPA26CA | 26 | 29.04 | 31.80 | 5 | 343.2 | 50 | 44.0 |
| 10KPA28A | 10KPA28CA | 28 | 31.28 | 34.24 | 5 | 317.9 | 25 | 47.5 |
| 10KPA30A | 10KPA30CA | 30 | 33.51 | 36.69 | 5 | 297.8 | 15 | 50.7 |
| 10KPA33A | 10KPA33CA | 33 | 36.9 | 40.4 | 5 | 276.1 | 2 | 54.7 |
| 10KPA36A | 10KPA36CA | 36 | 40.2 | 44.0 | 5 | 252.5 | 2 | 59.8 |
| 10KPA40A | 10KPA40CA | 40 | 44.7 | 48.9 | 5 | 229.5 | 2 | 65.8 |
| 10KPA43A | 10KPA43CA | 43 | 48.0 | 52.6 | 5 | 216.3 | 2 | 69.8 |
| 10KPA45A | 10KPA45CA | 45 | 50.3 | 55.0 | 5 | 207.4 | 2 | 72.8 |
| 10KPA48A | 10KPA48CA | 48 | 53.6 | 58.7 | 5 | 194.3 | 2 | 77.7 |
| 10KPA51A | 10KPA51CA | 51 | 57.0 | 62.4 | 5 | 182.1 | 2 | 82.9 |
| 10KPA54A | 10KPA54CA | 54 | 60.3 | 66.0 | 5 | 172.2 | 2 | 87.7 |
| 10KPA58A | 10KPA58CA | 58 | 64.8 | 70.9 | 5 | 161.0 | 2 | 93.8 |
| 10KPA60A | 10KPA60CA | 60 | 67.0 | 73.4 | 5 | 155.0 | 2 | 97.4 |
| 10KPA64A | 10KPA64CA | 64 | 71.5 | 78.3 | 5 | 144.9 | 2 | 104.2 |
| 10KPA70A | 10KPA70CA | 70 | 78.2 | 85.6 | 5 | 132.9 | 2 | 113.6 |
| 10KPA75A | 10KPA75CA | 75 | 83.8 | 91.7 | 5 | 123.8 | 2 | 122.0 |
| 10KPA78A | 10KPA78CA | 78 | 87.1 | 95.4 | 5 | 119.7 | 2 | 126.1 |
| 10KPA85A | 10KPA85CA | 85 | 94.9 | 104.0 | 5 | 109.7 | 2 | 137.6 |
| 10KPA90A | 10KPA90CA | 90 | 100.5 | 110.1 | 5 | 103.7 | 2 | 145.6 |
| 10KPA100A | 10KPA100CA | 100 | 111.7 | 122.3 | 5 | 93.6 | 2 | 161.3 |
| 10KPA110A | 10KPA110CA | 110 | 122.9 | 134.5 | 5 | 84.5 | 2 | 178.6 |
| 10KPA120A | 10KPA120CA | 120 | 134.0 | 146.8 | 5 | 78.5 | 2 | 192.3 |
| 10KPA130A | 10KPA130CA | 130 | 145.2 | 159.0 | 5 | 72.5 | 2 | 208.3 |
| 10KPA150A | 10KPA150CA | 150 | 167.6 | 183.5 | 5 | 62.4 | 2 | 241.9 |
| 10KPA160A | 10KPA160CA | 160 | 178.7 | 195.7 | 5 | 58.4 | 2 | 258.6 |
| 10KPA170A | 10KPA170CA | 170 | 189.9 | 207.9 | 5 | 55.4 | 2 | 272.7 |
| 10KPA180A | 10KPA180CA | 180 | 201.1 | 220.1 | 5 | 52.3 | 2 | 288.5 |
| 10KPA200A | 10KPA200CA | 200 | 223.4 | 244.6 | 5 | 47.3 | 2 | 319.1 |
| 10KPA220A | 10KPA220CA | 220 | 245.7 | 269.1 | 5 | 35.2 | 2 | 428.6 |
| 10KPA240A | 10KPA240CA | 240 | 268.1 | 293.5 | 5 | 39.3 | 2 | 384.6 |
| 10KPA260A | 10KPA260CA | 260 | 290.4 | 318.0 | 5 | 36.2 | 2 | 416.7 |
| 10KPA280A | 10KPA280CA | 280 | 312.8 | 342.4 | 5 | 33.2 | 2 | 454.5 |

For bidirectional type having V_{RWM} of 30 volts and less, the I_R limit is double. For parts with A , the V_{BR} is ±5%

Figure 1 - Peak Pulse Power Rating Curve

Figure 2 - Pulse Derating Curve

Figure 3 - Pulse Wavetform

Figure 4 - Typical Junction Capacitance

Figure 5 - Steady State Power Derating Curve

Figure 6 - Maximum Non-Repetitive Peak Forward Surge Current
