

MACFM-03D

Wide Input, AC Encapsulated EMC Filter Module



Key Features:

- 85 to 305 VAC Input
- Compact Case
- -40°C to +85°C Operation
- Low Cost

Electrical Specifications

Specifications typical @ +25°C, nominal input voltage & rated output current, unless otherwise noted. Specifications subject to change without notice.

Input						
Parameter	Conditions	Min.	Typ.	Max.	Units	
Input Voltage Range, See Note 1		85		305	VAC	
Nominal Current, See Note 2				0.3	A	

General						
Parameter	Conditions	Min.	Typ.	Max.	Units	
Test Voltage	60 Sec, 1 mA Leakage Current		2,000		VAC	
Conducted Emissions	EN 55022	Class B				
Surge	EN 61000-4-5	Criteria B; ±1 kV (1.2 μS/50 μS 2Ω) Criteria B; ±2 kV (1.2 μS/50 μS 12Ω)				

Parameter	Conditions	Min.	Typ.	Max.	Units	
Operating Temperature Range	Ambient	-40	+25	+85	°C	
Storage Temperature Range		-55		+125	°C	
Cooling	Free Air Convection					
Humidity	RH, Non-condensing			95	%	

Physical						
Parameter	Conditions	Min.	Typ.	Max.	Units	
Case Size		See Mechanical Drawing (Page 2)				
Case Material		Non-Conductive Black Plastic (UL94-V0)				
Weight		0.71 Oz (20g)				

Notes:

1. The Max input voltage level of the power supply must be less than the maximum specified input of the **MACFM-03D**.
2. The Max input current of the power supply must be less than the maximum specified nominal current of the **MACFM-03D**.



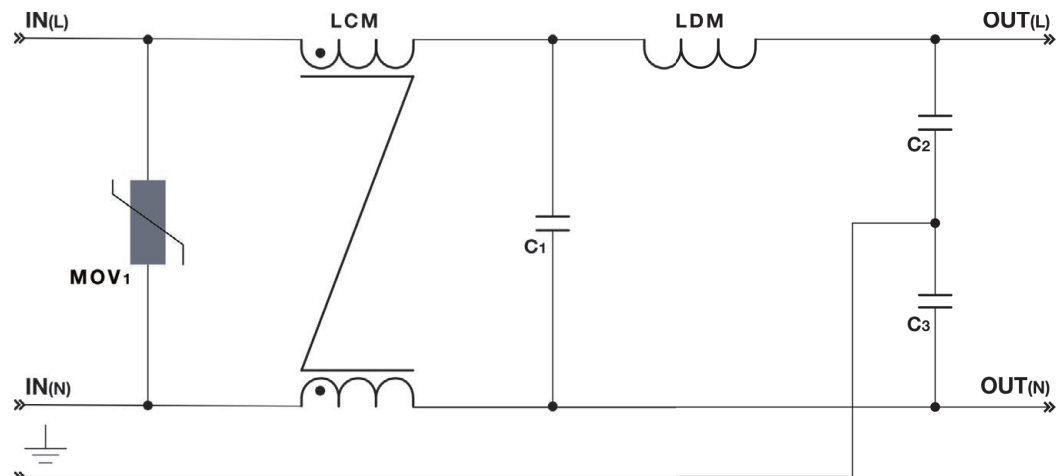
MicroPower Direct

292 Page Street
Suite D
Stoughton, MA 02072
USA

T: (781) 344-8226
F: (781) 344-8481
E: sales@micropowerdirect.com
W: www.micropowerdirect.com

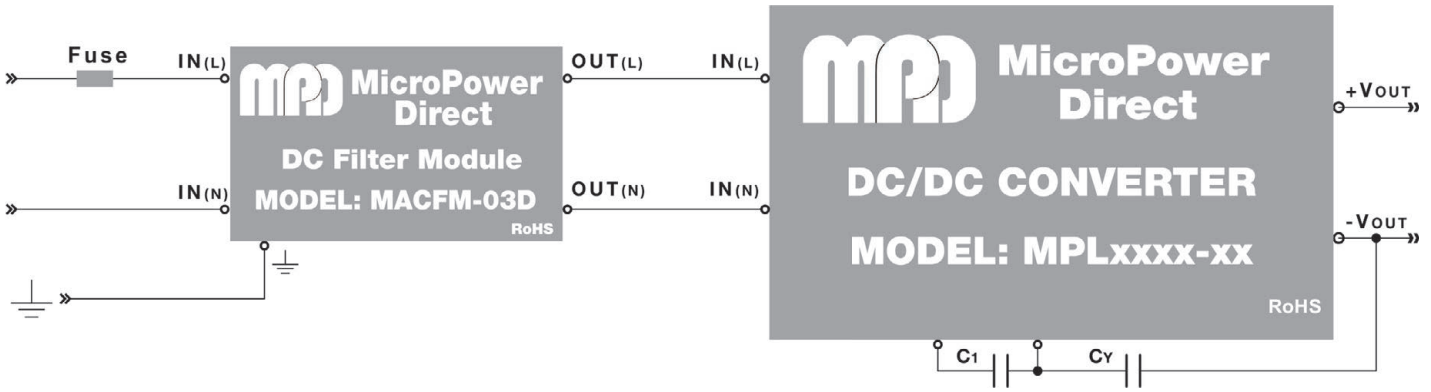


Schematic



www.micropowerdirect.com

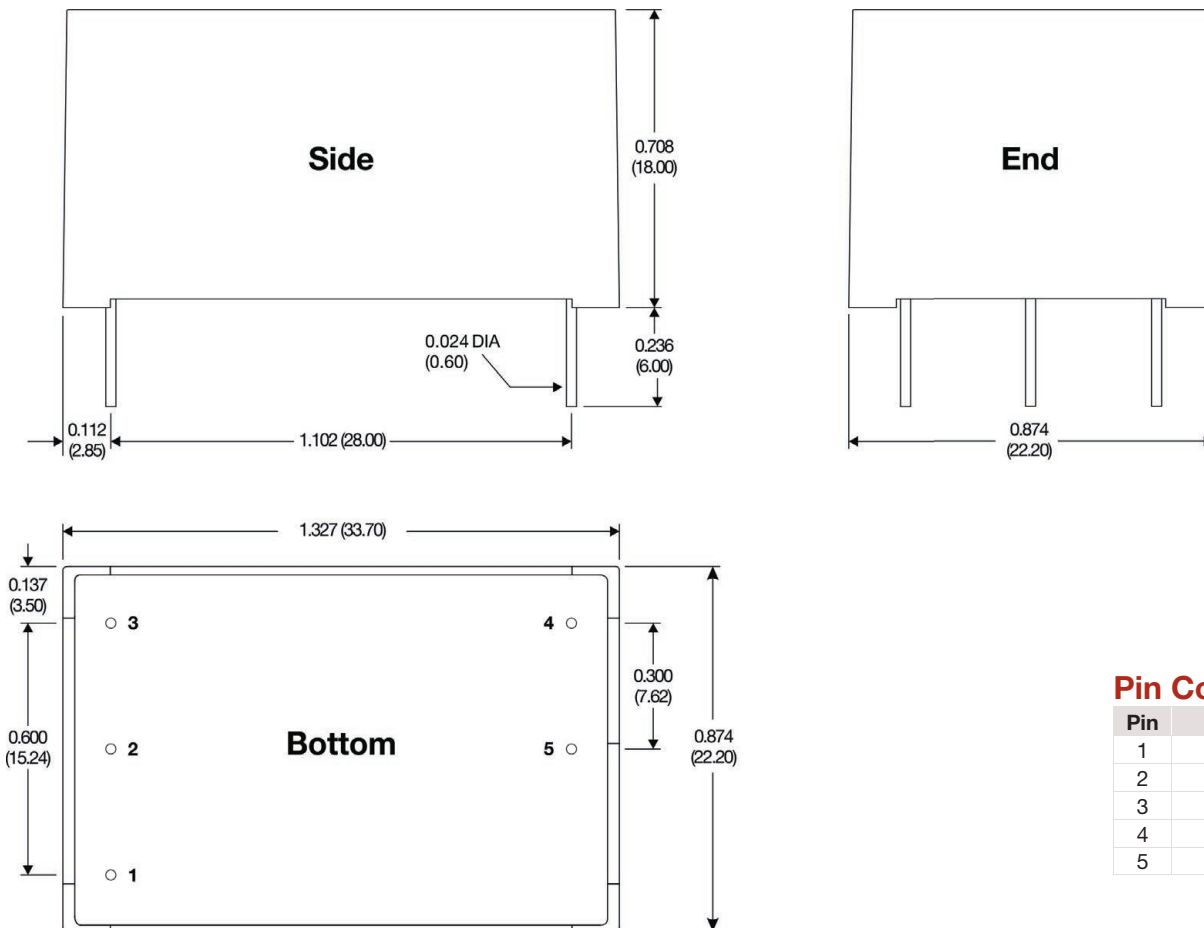
Typical Connection



MACFM-03D filter modules operate with **MPD's** ultra-miniature 1W, 3W and 5W **MPL** AC/DC power supplies. The **MPL** units provide 1W, 3W and 5W of power from miniature SIP packages.

With these modules, the AC power supply will meet the surge requirements of EN 61000-4-5 and the EMS requirements of EN 55022. Capacitors C1 and Cy are required for proper operation of **MPL** units. Refer to the product datasheet for recommended values. Contact the factory for information on our full range of filter products.

Mechanical Dimensions



Pin Connections

Pin	Function
1	GND
2	IN(N)
3	IN(L)
4	OUT(L)
5	OUT(N)

Notes:

- All dimensions are typical in inches (mm)
- Tolerance x.xx = ±0.02 (±0.50)



MicroPower Direct
We Power Your Success - For Less!