

IEC Appliance Inlet C14 with Filter

Standard- or Medical-Filter



Description

- Panel Mount :
Snap-in or screw-on mounting from front side
- 2 Functions :
Appliance Inlet Protection class I , Line filter in standard and medical version
- Quick connect terminals 6.3 x 0.8 mm

Unique Selling Proposition

- Ultra-compact design
- High quality filter case made of stainless steel
- Highly resistant since potted filter
- Various filter variants

Approvals

- VDE Certificate Number: 40035745
- UL File Number: E72928
- CCC File Number: 2006010204191430

Characteristics

- All single elements are already wired
- Suitable for use in equipment according to IEC/UL 60950
- Suitable for use in medical equipment according to IEC/UL 60601-1

Other versions on request

- Capacity CX 100 nF
- Medical version M80

References

Alternative: version without line filter [6100-3](#); [6100-4](#)

Weblinks

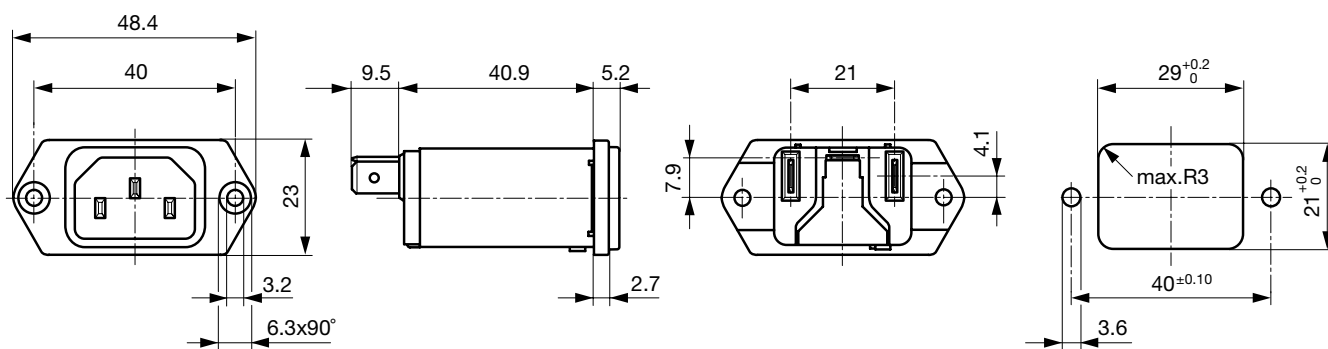
[pdf-datasheet](#), [html-datasheet](#), [General Product Information](#), [RoHS](#), [CHINA-RoHS](#), [REACH](#), [Distributor-Stock-Check](#), [Accessories](#), [Detailed request for product](#)

Technical Data

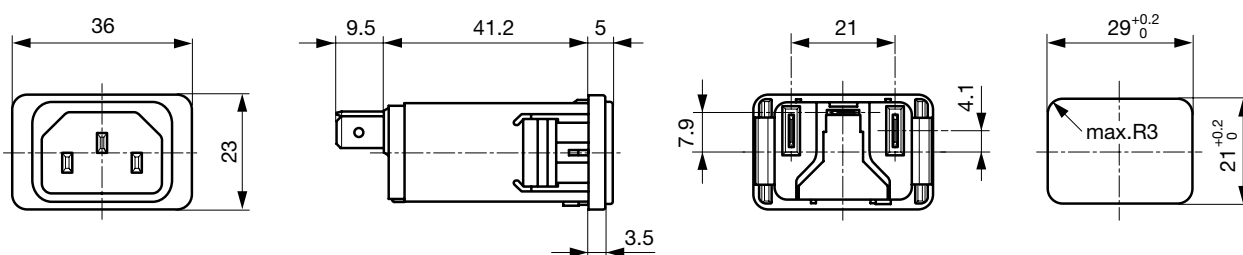
Ratings IEC	1 - 10A @ Ta 40 °C / 250VAC; 50Hz	appliance inlet/-outlet	C14 acc. to IEC 60320-1, UL 498, CSA C22.2 no. 42 (for cold conditions) pin-temperature 70 °C, 10A, Protection Class I
Ratings UL/CSA	1 - 15A @ Ta 40 °C / 125VAC; 60Hz	Line Filter	Standard and Medical Version, IEC 60939, UL 1283, CSA C22.2 no. 8 Technical Details
Leakage Current	standard < 0.5mA (250V / 60Hz) medical < 5 µA (250 V / 60 Hz)	MTBF	> 3'100'000h acc. to MIL-HB-217 F
Dielectric Strength	> 1.7kVDC between L-N > 2.7kVDC between L/N-PE Test voltage (2 sec)		
Allowable Operation Temp.	-25 °C to 85 °C		
Climatic Category	25/085/21 acc. to IEC 60068-1		
IP-Protection	from front side IP 40 acc. to IEC 60529		
Protection Class	Suitable for appliances with protection class I acc. to IEC 61140		
Terminal	Quick connect terminals 6.3 x 0.8 mm		
Panel Thickness s	Screw: max 5 mm Mounting screw torque max 0.5Nm Snap-in: 0.8mm to 3mm		
Material: Housing	Thermoplastic, black, UL 94V-0		

Dimensions

Screw-on mounting



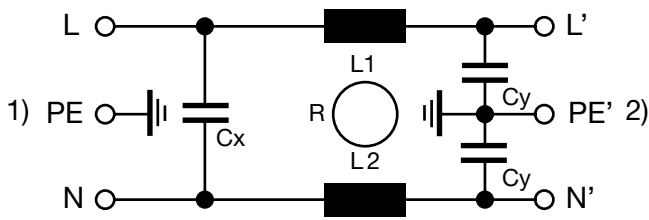
Snap-in mounting

**Technical Data of Filter-Components**

Rated Current [A]	Filter-Type	Inductances L [mH]	Capacitance CX [nF]	Capacitance CY [nF]	R [MΩ]
1	Standard Version	2 x 11	47	2.2	-
2	Standard Version	2 x 4	47	2.2	-
3	Standard Version	2 x 2.5	47	2.2	-
4	Standard Version	2 x 1.6	47	2.2	-
6	Standard Version	2 x 0.7	47	2.2	-
8	Standard Version	2 x 0.6	47	2.2	-
10	Standard Version	2 x 0.4	47	2.2	-
15	Standard Version	2 x 0.1	47	2.2	-
1	Medical Version (M5)	2 x 11	47	-	1
2	Medical Version (M5)	2 x 4	47	-	1
3	Medical Version (M5)	2 x 2.5	47	-	1
4	Medical Version (M5)	2 x 1.6	47	-	1
6	Medical Version (M5)	2 x 0.7	47	-	1
8	Medical Version (M5)	2 x 0.6	47	-	1
10	Medical Version (M5)	2 x 0.4	47	-	1
15	Medical Version (M5)	2 x 0.1	47	-	1
10	Standard and Medical Version	2 x 0.4	47	2.2	1

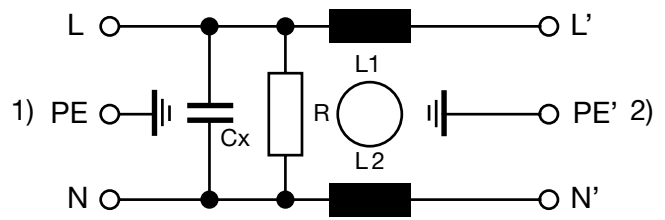
Diagrams

Standard version



1) Line
2) Load

Medical version (M5)



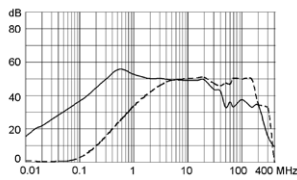
1) Line
2) Load

Attenuation Loss

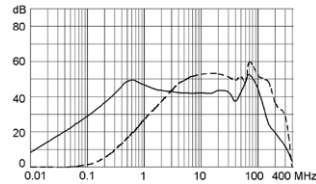
Standard version

--- 50Ω differential mode ___ 50Ω common mode

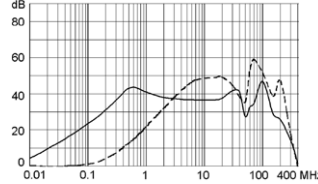
1 A



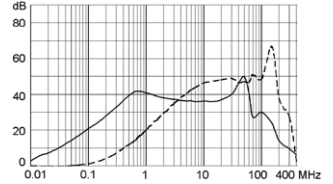
2 A



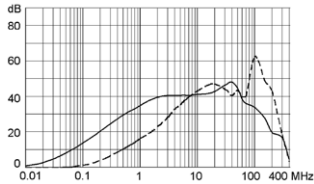
3 A



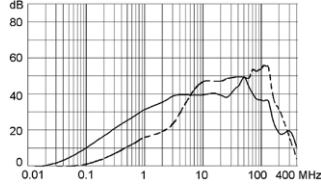
4 A



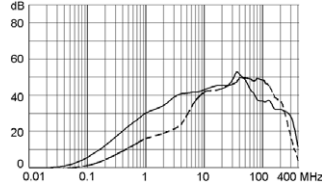
6 A



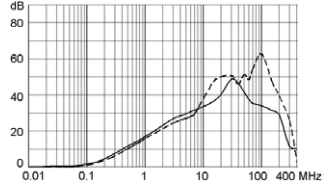
8 A



10 A

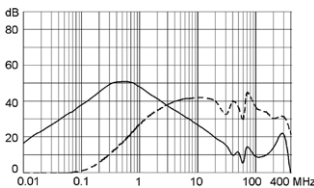


15 A

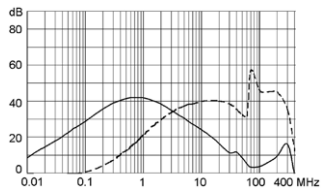


Medical version (M5)

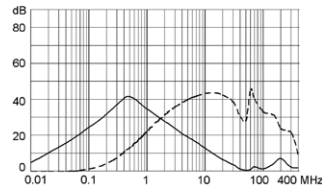
1 A



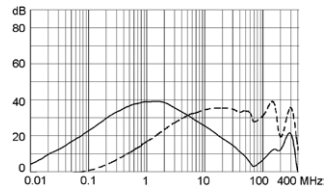
2 A



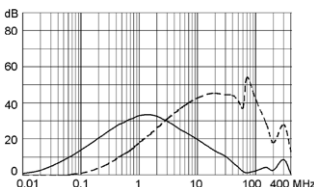
3 A



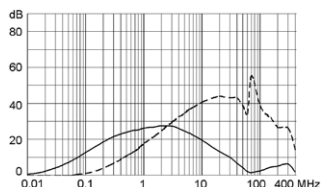
4 A



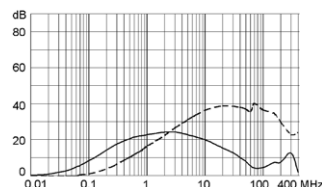
6 A



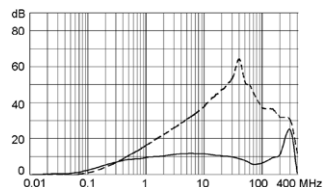
8 A



10 A



15 A



All Variants

Rated Current [A]	Filter-Type	Panel mounting	Order Number	
1	Standard Version	Snap-in	5110.0143.1	■
2	Standard Version	Snap-in	5110.0243.1	■
3	Standard Version	Snap-in	5110.0343.1	■
4	Standard Version	Snap-in	5110.0443.1	■
6	Standard Version	Snap-in	5110.0643.1	■
8	Standard Version	Snap-in	5110.0843.1	
10	Standard Version	Snap-in	5110.1043.1	■
15	Standard Version	Snap-in	5110.1543.1	■
1	Standard Version	Screw	5110.0133.1	■
2	Standard Version	Screw	5110.0233.1	■
3	Standard Version	Screw	5110.0333.1	■
4	Standard Version	Screw	5110.0433.1	
6	Standard Version	Screw	5110.0633.1	■
8	Standard Version	Screw	5110.0833.1	
10	Standard Version	Screw	5110.1033.1	■
15	Standard Version	Screw	5110.1533.1	■
1	Medical Version (M5)	Snap-in	5110.0143.3	
2	Medical Version (M5)	Snap-in	5110.0243.3	
3	Medical Version (M5)	Snap-in	5110.0343.3	
4	Medical Version (M5)	Snap-in	5110.0443.3	
6	Medical Version (M5)	Snap-in	5110.0643.3	
8	Medical Version (M5)	Snap-in	5110.0843.3	
10	Medical Version (M5)	Snap-in	5110.1043.3	
15	Medical Version (M5)	Snap-in	5110.1543.3	■
1	Medical Version (M5)	Screw	5110.0133.3	
2	Medical Version (M5)	Screw	5110.0233.3	
3	Medical Version (M5)	Screw	5110.0333.3	■
4	Medical Version (M5)	Screw	5110.0433.3	
6	Medical Version (M5)	Screw	5110.0633.3	■
8	Medical Version (M5)	Screw	5110.0833.3	
10	Medical Version (M5)	Screw	5110.1033.3	■
15	Medical Version (M5)	Screw	5110.1533.3	■

■ Most Popular.

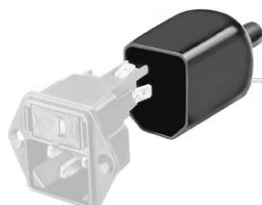
Availability for all products can be searched real-time:<http://www.schurter.com/Stock-Check/Stock-Check-SCHURTER>**Packaging unit** 10 Pcs

Accessories

Description



Wire Harness
Wire harness for SCHURTER products



Assorted Covers
Rear Cover

0859.0048



Cord retaining kits
Cord retaining strain relief

Flat head, A	4700.0001
Countersunk, C	4700.0003

Mating Outlets/Connectors

Category / Description

Appliance Outlet Overview complete



IEC Appliance Outlet F, Screw-on Mounting, Front Side, Solder Terminal	4787
IEC Appliance Outlet F, Snap-in Mounting, Front Side, Solder or Quick-connect Terminal	4788
IEC Appliance Outlet F or H, Screw-on Mounting, Front Side, Solder, PCB or Quick-connect Terminal	5091

Appliance Outlet further types to 5110

Connector Overview complete



4782 Mounting: Power Cord, 3 x 1 mm ² / 3 x 18 AWG, Cable, Connector: IEC C13	4782
4022 Mounting: Power Supply Cord, 3 x 1.5 mm ² , Screw clamps, Connector: IEC C13	4022
4785 Mounting: Power Cord, 3 x 1 mm ² / 3 x 18 AWG, Cable, Connector: IEC C13	4785
4300-06 Mounting: Power Cord, 3 x 1 mm ² / 3 x 18 AWG, Cable, Connector: IEC C13	4300-06
4012 Mounting: Power Supply Cord, 3 x 1.5 mm ² , Screw clamps, Connector: IEC C13	4012

Connector further types to 5110

...