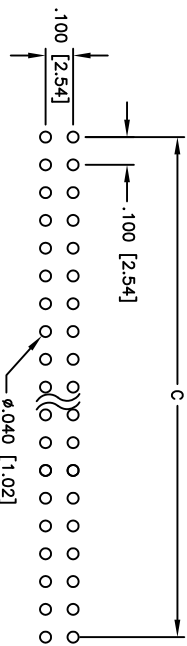
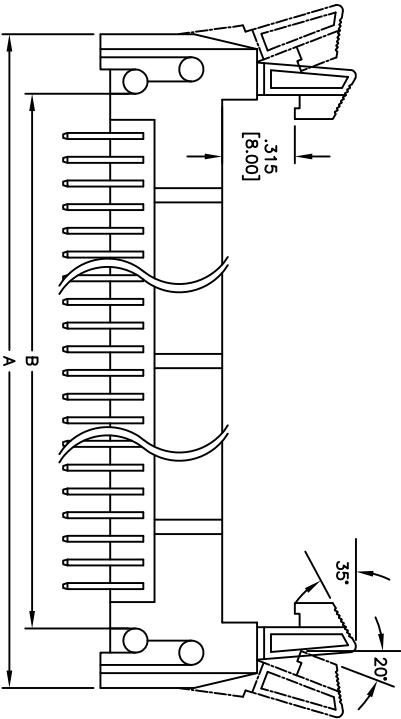
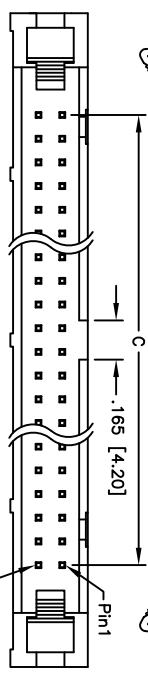
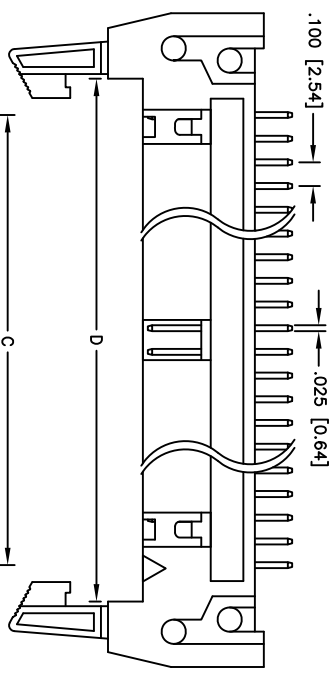
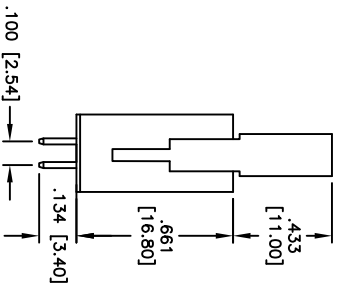


Rev	AWO #	Description	Date	Appr
-		RELEASED	3/25/10	

APPROVED: \_\_\_\_\_  
 DATE: \_\_\_\_\_ TITLE: \_\_\_\_\_



RECOMMENDED PCB LAYOUT



**SPECIFICATIONS:**  
 Material: PBT, glass reinforced, rated UL 94V-0, color black  
 Insulator: Brass  
 Plating: Gold flash over Nickel underplate overall  
 Electrical: Current rating: 1 Amps max  
 Contact Resistance: 10 mohm max  
 Insulation resistance: 1000 Mohm min  
 Dielectric withstanding voltage: 500 VAC for 1 minute  
 Temperature Rating: Operating temperature: -55°C to +105°C  
 Environmental: Lead free, RoHS compliant.  
 Recommended soldering temp: 235°C for 5 sec.

Positions: 10, 14, 16, 20, 24, 26, 30, 34, 40, 50, 60, 64  
 A = .100 [2.54] x No. of Spaces + .855 [21.71]  
 B = .100 [2.54] x No. of Spaces + .454 [11.54]  
 C = .100 [2.54] x No. of Spaces + .305 [7.74]  
 D = .100 [2.54] x No. of Spaces + .305 [7.74]

UNLESS OTHERWISE SPECIFIED  
 ALL DIMENSIONS ARE MM [INCHES]  
 TOLERANCES: EXCEPT AS NOTED  
 INCHES Holes ±.10  
 .XX ±.020 ØXXX ±.015  
 .XXX ±.015 ØXXX ±.010

**ADAM TECH**  
 909 Rahway Avenue, Union, NJ 07083  
 Phone: 908-687-5000 Fax: 908-687-5710

TITLE: LATCH BOX HEADER, VERTICAL TYPE  
 LONG ELECTOR LATCHES

DRAWN	DY	3/25/10
CHECKED		
APPROVED		

SIZE	PART NO.	MHR-A-XX-VUAL
REF: S00039T	SCALE: NTS	SHEET 1 OF 1

