



O/E/N 37-T ICE CUBE STYLE INDUSTRIAL RELAY

- Mechanical Flag Indication
- Lockable Test Button
- LED & Free Wheeling Diode across coil
- Compact High Performance
- Din Rail Mounting Sockets available

SPECIFICATIONS

Contact Arrangement	: 2 Form C, 4 Form C
Contact Material	: Silver Alloy
Rated Voltage	: 230 VAC/24 VDC
Contact Rating	
	2 Form C : 10A@230VAC/24VDC
	4 Form C : 5A@230VAC/24VDC
Max. Switching Voltage	: 230 VAC / 24 VDC
Contact Resistance Initial	: 50m Ohms
Nominal Coil Power	: 0.9 W (approx)
Life Expectancy	
Mechanical	: 10 ⁷ operations
Electrical	: 10 ⁵ operations
Dielectric Strength	
Between coil and contacts	: 1800VAC
Between Open contacts	: 1000VAC
Insulation Resistance at	: 100Meg.Ohms
	@ 500 VDC, 25°C, RH 50
Operate time at nom. Volt	: 20 milli sec
Release time at nom. Volt	: 20 milli sec
Ambient Temperature	: -40°C to + 85° C
Weight	: 35 g

Typical Applications

Industrial Controls, Office Automation, PLCs, Timers

SOCKET ORDERING CODE

2 Form C	37-9900-200
4 Form C	37-9700-100

All dimensions are in mm. Specifications subject to change without notice.

COIL DATA

Nominal Voltage	Pick-up Voltage	Coil Resistance Ohms±10%

DC Coils

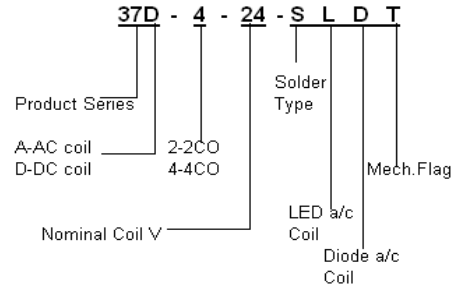
12	9.6	160
24	19.2	650
* 220	176	42000

AC Coils

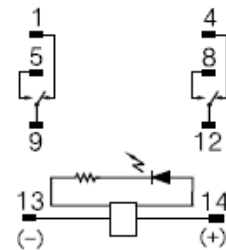
110	90	3750
240	190	18790

* Special coils available on req.

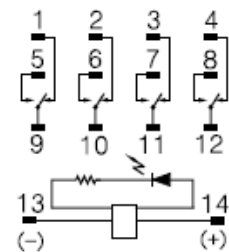
HOW TO ORDER



WIRING LAYOUT

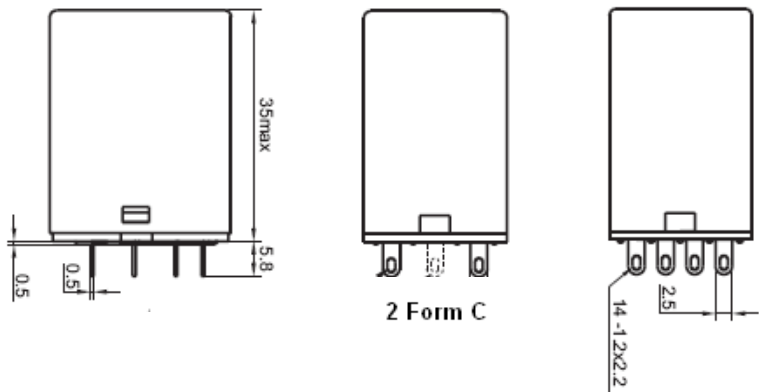


2 Form C



4 Form C

DIMENSIONS



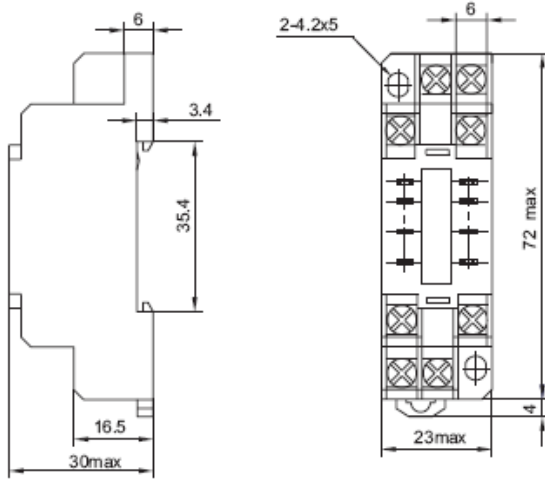
2 Form C

4 Form C

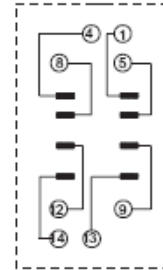
SOCKET DIMENSIONS

2 CHANGE OVER SOCKET - 37-9900-200

Outline Dimensions

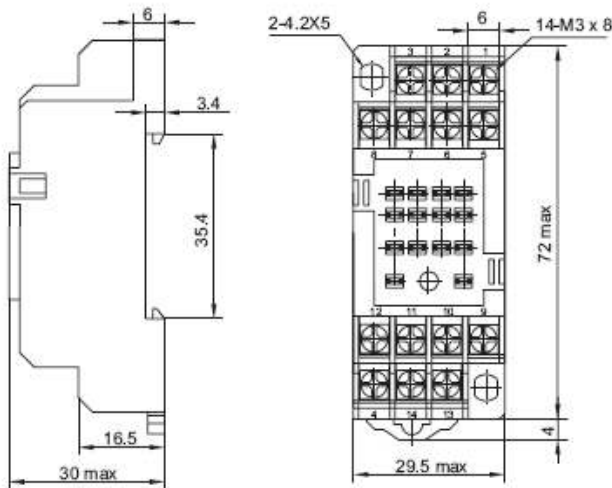


Wiring Diagram



4 CHANGE OVER SOCKET - 37-9700-100

Outline Dimensions



Wiring Diagram

