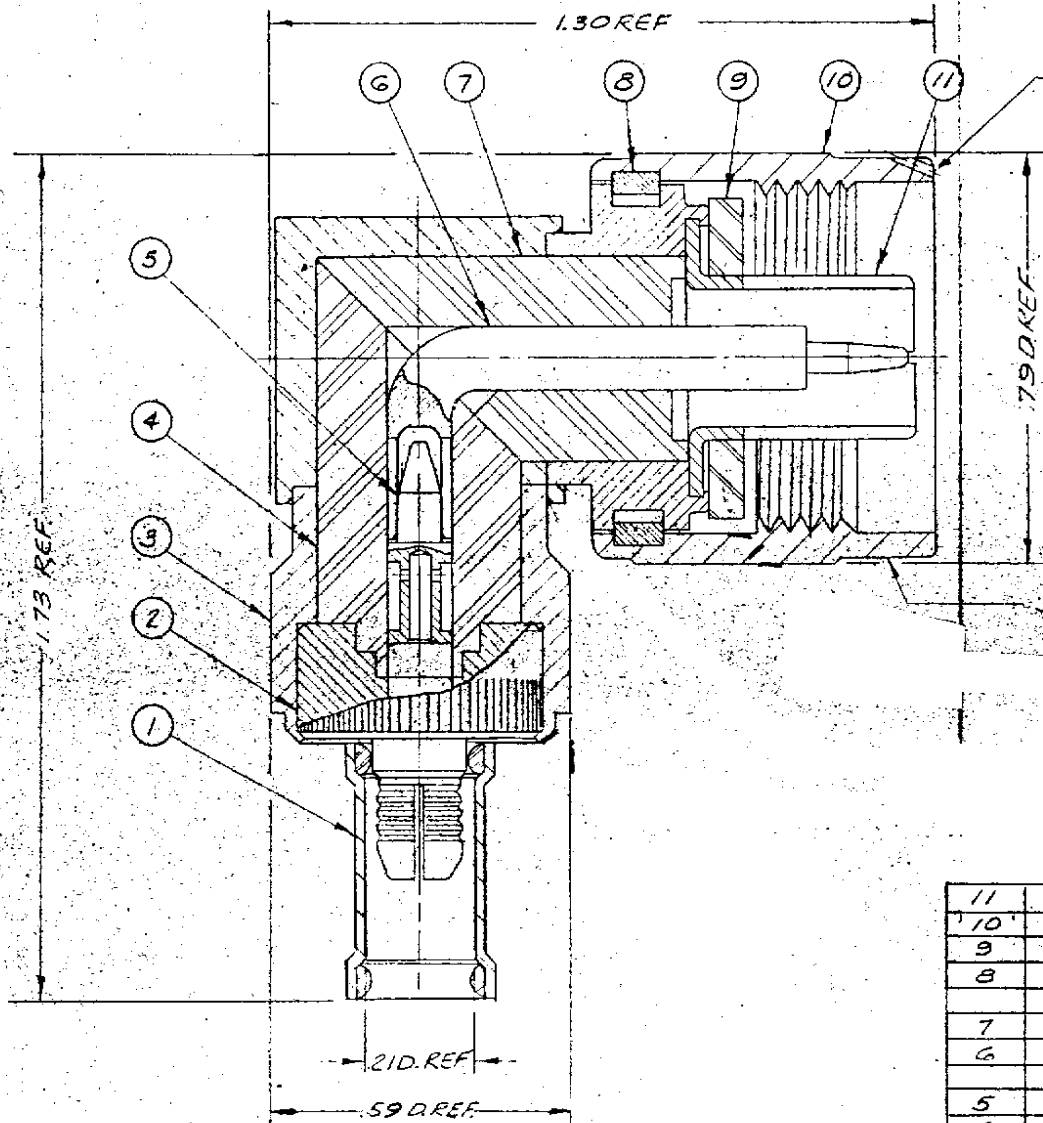


.12 #

KN-59-158

REVISIONS

| ISSUE | CHANGES |
|-------|----------------------------|
| 0 | ER 9249 WLA 22 JAN 71 |
| 3 | CN 29365 D EAT 5 NOV 81 |



NOTES:

1. FOR USE WITH RG-58, 58A, 58C, 141 & 141A/U CABLE.
2. FOR CABLE TRIMMING USE KTJ-10 & KTD-51.
3. FOR FORMING USE CRIMP DIE SIZE G1.
4. FOR CABLING INSTRUCTIONS SEE CP-403.

STAMP: KINGS KN-59-158

THIS DOCUMENT CONTAINS PROPRIETARY INFORMATION. IT MAY NOT BE REPRODUCED WITHOUT WRITTEN AUTHORIZATION BY KINGS ELECTRONICS CO., INC.

NOTICE

| ITEM | REQD | DESCRIPTION | DWG. NO. |
|------|------|-----------------|----------------|
| 11 | 1 | CONTACT | |
| 10 | 1 | COUPLING NUT | |
| 9 | 1 | GASKET | |
| 8 | 1 | SPRING | |
| 7 | 1 | INSULATOR | |
| 6 | 1 | CONTACT | |
| 5 | 1 | CRIMP CONTACT | D-59-116-2-M07 |
| 4 | 1 | INSULATOR | |
| 3 | 1 | BODY ASSEMBLY | |
| 2 | 1 | K-GRIP | |
| 1 | 1 | WPK-GRIP SLEEVE | C-59-197-2-M06 |

| | |
|--|----------------|
| REP: | |
| FINISH | |
| SPEC. | |
| MATL. | |
| SPEC. | |
| TYPE N ANGLE PLUG | |
| DRAWN WLA | DATE 22 JAN 71 |
| APPR. LI | DATE 22 JAN 71 |
| KINGS ELECTRONICS 40 MARBLEDALE ROAD YUCCAHOE, N. Y. | |
| KN-59-158 | |

UNLESS OTHERWISE SPECIFIED:

1. TOLERANCES: FRACTIONS ± .010 DECIMALS ± .004 ANGLES ± 0° 30' T. I. R. CONCENTRICITY OF ANY 2 DIAMETERS MAY NOT EXCEED THE SUM OF THEIR TOLERANCES.
2. REMOVE ALL BURRS. BREAK SHARP EDGES .003 MAX.
3. NO FILLETS PERMITTED.
4. SURFACE ROUGHNESS 63 MICROINCHES RMS MAX.
5. ALL DIMENSIONS PRIOR TO PLATING.

S-D