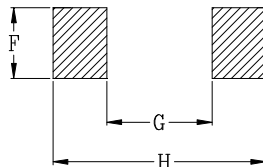
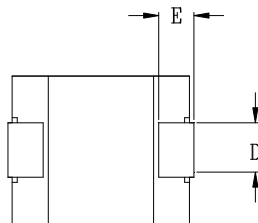
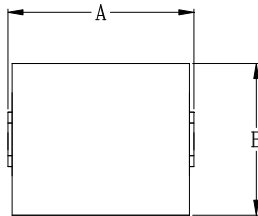


### Cyntec P/N : HCB106480N Series

#### Mechanical Dimensions



PCB LAYOUT

Dimensions (Unit : mm)

A	9.6 MAX
B	6.4 MAX
C	8.0 MAX
D	2.15
E	2.0
F	2.45
G	3.7
H	9.7

#### Electrical Characteristics

Part Number	L0 Inductance ( nH ) @ (0A)	Li (nH)	DCR ( mΩ)	Heat Rating Current DC Amps. Idc ( A )	Saturation Current DC Amps. Isat ( A )
HCB106480N-101	100	72.0	0.29 ± 5%	51	95
HCB106480N-121	120	86.4			81
HCB106480N-151	150	108			66
HCB106480N-181	180	129			54
HCB106480N-221	220	158			45
HCB106480N-281	280	201			35
HCB106480N-301	300	216			33
HCB106480N-331	330	238			29

\*: Inductance Tolerance ± 10%

Note 1. : All test data is referenced to 25°C ambient.

Note 2. : Test Condition:100KHz, 1.0Vrms

Note 3. : Isat is the DC current which cause the inductance drop not lower than Li.

Note 4. : Idc is the DC current which cause the surface temperature of the part increase approximately 40 °C.

Note 5. : Operating temperature: -40°C to 125°C (Self-temperature rise included).

Note 6. : The rated current as listed is either the saturation current or the heating current depending on which value is lower.

### Current Characteristic

