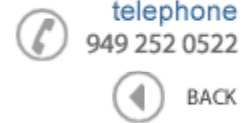




Data Sheet



Product Category: Filters

Series Number	Package	Description	Last Modified
736	Ceramic LT/U	455 KHz 4 Element	Jan. 01 2008

## Filter FEATURES

- AM use
- IF filter
- 4 element
- RoHS Compliant



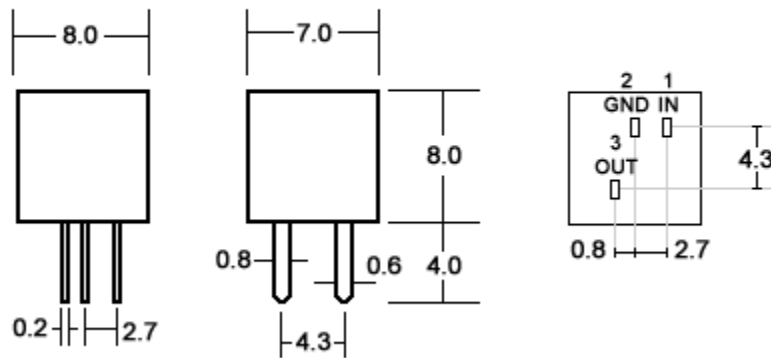
### OPERATING CONDITIONS / ELECTRICAL CHARACTERISTICS / PART NUMBER GUIDE

PART NO.	6dB Bandwidth	40dB Bandwidth	Pass Band Ripple	Spurious Attenuation fn $\pm 100$ KHz	Insertion Loss	In/Output Impedance
	KHz min.	KHz max.	dB max.	dB min.	dB max.	Kohm
736-459-AU	$\pm 17$	$\pm 40$	2	28	4	1
736-459-BU	$\pm 15$	$\pm 30$	2	28	4	1.5
736-459-CU	$\pm 12.5$	$\pm 24$	2	28	4	1.5
736-459-DU	$\pm 10$	$\pm 20$	2	28	4	1.5
736-459-EU	$\pm 7.5$	$\pm 15$	2	28	6	1.5
736-459-FU	$\pm 6$	$\pm 12.5$	2	28	6	2
736-459-GU	$\pm 4.5$	$\pm 10$	2	28	6	2
736-459-HU	$\pm 3$	$\pm 9$	2	28	6	2
736-459-IU	$\pm 2$	$\pm 7.5$	2	28	6	2
736-459-HT	$\pm 3$	$\pm 9$	2	35	6	2

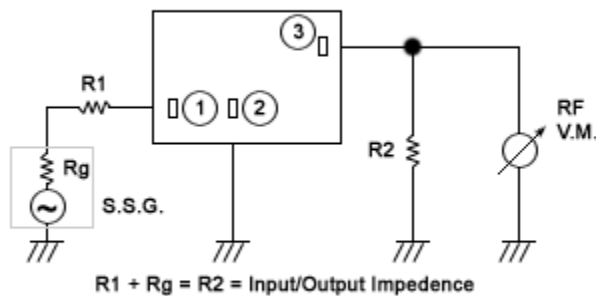
**NOTE:** Deviations on all parameters available. Please consult Oscilent for details.

**DEFINITIONS:** Click on the characteristic names above, for definitions of the particular characteristic.

**PACKAGE DIMENSIONS (mm)**



**Figure 1) Front and Side Views**



**Figure 2) Measuring Circuit**

**Oscilent Corporation** - CALL **949.252.0522**  
 18195 East McDermott Street . Building D . Irvine . CA 92614 . USA  
 Fax: 949.252.0599 . E-Mail: Sales@Oscilent.com

**Series No.:** 736