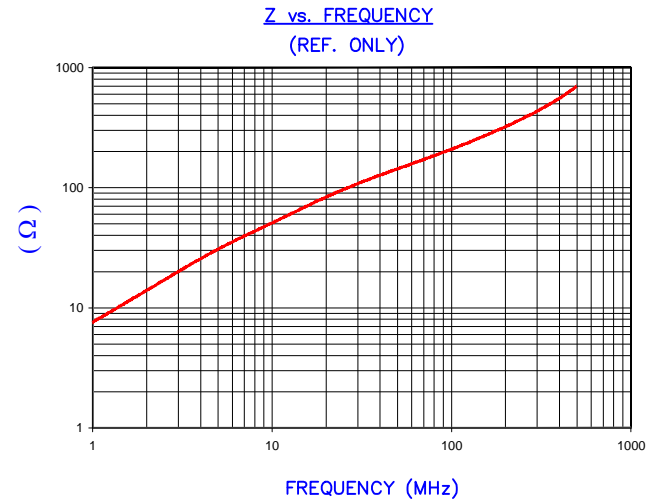


DETAIL "A"  
CHAMFER  
SCALE=6:1

**UNCONTROLLED DOCUMENT**



IMPEDANCE ( Z )			
Frequency	25 MHz	100 MHz	300 MHz
Nominal (REF)	100 Ω	220 Ω	430 Ω
Minimum	- Ω	176 Ω	- Ω



AGILENT E4991A Impedance/Material Analyzer  
HP 16092A Test Fixture, REF # 3013

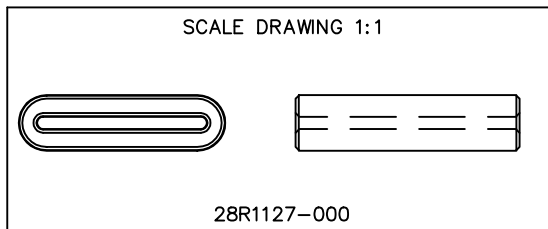
FERRITE CORE DIMENSIONS (SPEC): mm [Inches]

A	28.58 [1.125]	+	0.50 [.020]
B	23.50 [.925]	+	0.51 [.020]
C	31.00 [1.220]	+	0.62 [.024]
D	7.70 [.303]	+	0.50 [.020]
E	1.70 [.067]	+	0.51 [.020]
		-	0.38 [.015]

WEIGHT/1000 26.35 kgs [58.09 Lbs]

NOTES: UNLESS OTHERWISE SPECIFIED

1. COSMETIC SPECIFICATION REFER TO WI-QA-038.



DIMENSIONS ARE IN mm [INCHES]				This print is the property of Laird Tech. and is loaned in confidence subject to return upon request and with the understanding that no copies shall be made without the written consent of Laird Tech. All rights to design or invention are reserved.		<b>Laird</b>		
M	UPDATE COMPANY LOGO	05/29/15	QIU	PROJECT/PART NUMBER: <b>28R1127-000</b>		REV	DRAWN BY:	
L	UPDATE Z SPECS AND COMPANY LOGO	07/27/07	JRK			M	JBE	
K	CHANGE TOLS ON B DIMENSION	12/16/05	JRK			DATE: 05/19/95 SCALE: 2 : 1		MATERIAL:
J	UPDATE MIN Z SPEC@100 Mhz, ADD REF #	01/27/04	JRK					FERRITE
H	UPDATE Z SPECS & FORMAT REM NOTE, REV CURVE AND CHANGE E TOLS	02/24/03	JRK			CAD #	TOL #	28R1127-000-M R1127
REV	DESCRIPTION	DATE	INT					