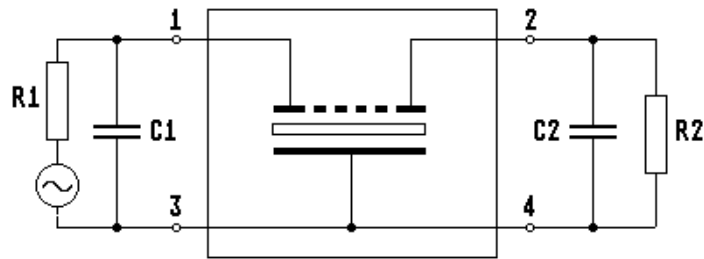
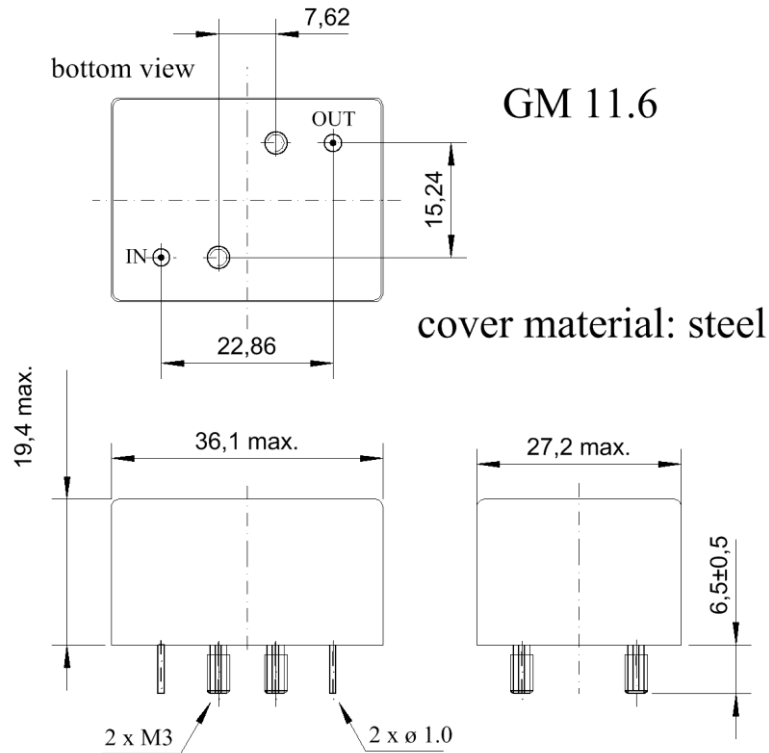


Specification for crystal filter: **QF 2.7648-0600/07**

1. General

1.1. Package:



- |   |                   |
|---|-------------------|
| 1.2. Type name:                           | QF 2.7648-0600/07 |
| 1.3. Number of poles:                     | 6                 |
| 1.4. Operating temperature range ( OTR ): | +10°C to +60°C    |
| 1.5. Storage temperature range:           | -40°C to +90°C    |

2. Electric values

- |                                       |             |
|---------------------------------------|-------------|
| 2.1. Nominal centre frequency ( fo ): | 2.76480 MHz |
|---------------------------------------|-------------|

2.2. Pass band

- |  |                |
|--|----------------|
| 2.2.1. Bandwidth between 3 dB - frequencies: | > fo ± 3.0 kHz |
|--|----------------|

- |   |                           |
|---|---------------------------|
| 2.2.2. Ripple in pass band at fo ± 2.2 kHz: | < 2.0 dB ( peak to peak ) |
|---|---------------------------|

- 2.2.3. Differential group delay at  $f_0 \pm 3.0$  kHz: < 300  $\mu$ s
- 2.2.4. Insertion loss: < 5.0 dB
- 2.2.5. Return loss at  $f_0 \pm 2.2$  kHz: > 10 dB at +25°C
- 2.3. Stop band
- 2.3.1.  $f_0 - 10.0$  kHz / +9.5 kHz: > 60 dB
- 2.3.2.  $f_0 - 14.0$  kHz / + 13.5 kHz: > 80 dB
- 2.3.3.  $f_0 - 14.0$  kHz.....- 500 kHz: > 80 dB
- 2.3.4.  $f_0 + 13.5$  kHz.....+ 500 kHz: > 80 dB ( except spurious )
- 2.4. Terminating impedance ( input and output ): 50  $\Omega$  // 0 pF
- 2.5. Maximum input power level  
( working / non-damaged ): -10dBm / +10dBm
- 2.5.1. Input power level for reference measurements: -10 dBm

top view

3. Marking:



4. Environment conditions: Corresponding to VECTRON standard CF001

---

Edited by: \_\_\_\_\_ date: \_\_\_\_\_ name: \_\_\_\_\_