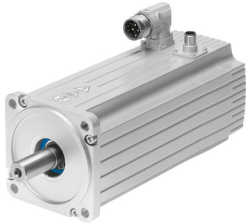


Servo motor EMMS-AS-100-MK-HS-RMB

Part number: 560898

FESTO



Data sheet

Feature	Value
Number of pole pairs	6
Type code	EMMS-AS
Rotor position sensor	Absolute encoder, multi-turn
Rotor position sensor interface	EnDat® 22
Rotor position sensor measuring principle	Inductive
Temperature monitoring	PTC resistor
Max. rotational speed	4030 1/min
Nominal rotary speed	3400 1/min
Brake DC operating voltage	24 V
Insulation protection class	F
Brake power consumption	18 W
Motor constants	1.652 Nm/A
Motor nominal power	2000 W
DC nominal voltage	565 V
Motor nominal current	3.4 A
Rotor position sensor resolution	19 bit
Phase-phase winding resistance	3.25 Ohm
Winding inductance phase-phase	12.3 mH
Type of winding switch	Star inside
Peak current	15 A
Voltage constant, phase-to-phase	99.15 mVmin
Rating class according to EN 60034-1	S1
CE marking (see declaration of conformity)	As per EU EMC directive As per EU low voltage directive
Corrosion resistance class (CRC)	2 - Moderate corrosion stress
Storage temperature	-20 °C ... 60 °C
Relative air humidity	0 - 90 %
Degree of protection	IP54
Ambient temperature	-10 °C ... 40 °C
Certification	RCM compliance mark c UL us - Recognized (OL)
Total output inertia moment	5.285 kgcm ²
Brake holding torque	9 Nm
Brake mass moment of inertia	0.555 kgcm ²
Nominal torque	5.69 Nm
Peak torque	22.1 Nm

Feature	Value
Stall torque	8.09 Nm
Permissible axial shaft load	150 N
Permissible radial shaft load	570 N
MTTF, subcomponent	76 years, rotor position sensor 3356 years, holding brake
MTTFd, subcomponent	152 years, rotor position sensor
Switching cycles, holding brake	10 million idle actuations (without friction work!)
Product weight	7500 g
Electrical connection technology	Plug
Note on materials	RoHS-compliant
Conforms to standard	IEC 60034
Featherkey shaft design	DIN 6885 A 6 x 6 x 32