

6

5

4

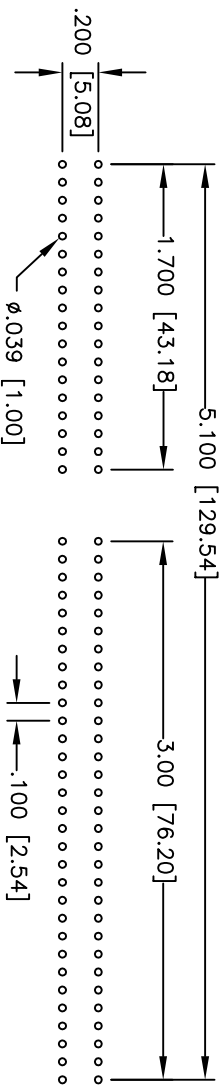
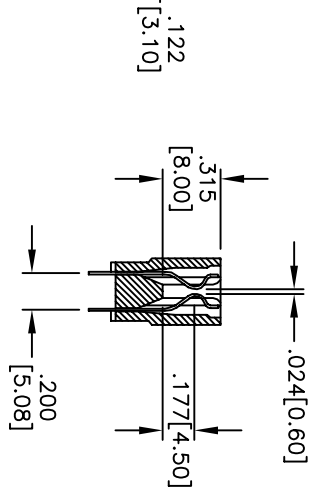
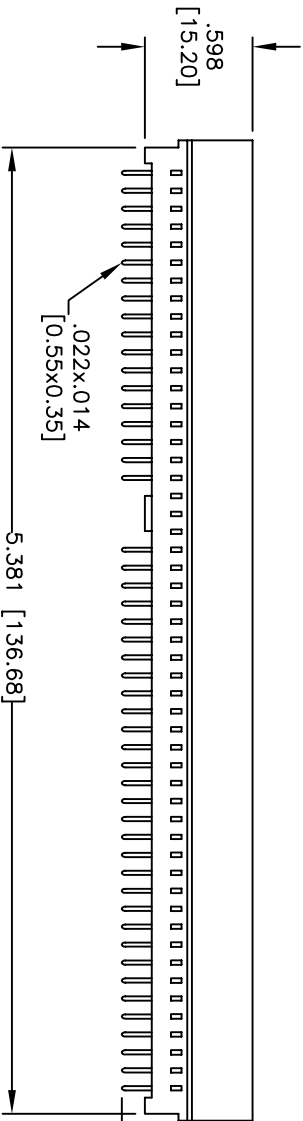
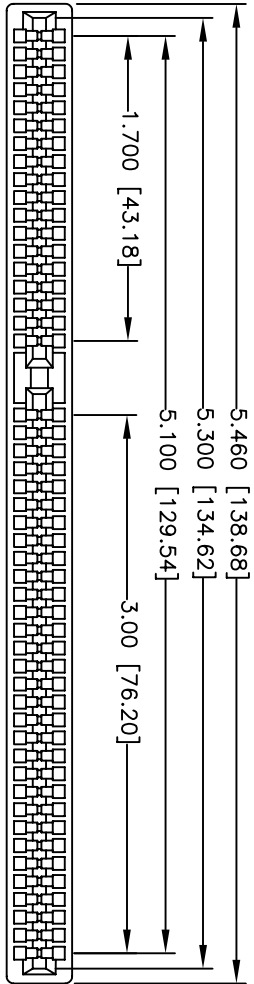
3

2

1

APPROVED: _____
 DATE: _____ TITLE: _____

Rev	AWO #	Description	Date	Appr
-		RELEASED	3/23/05	
A		ADD INSERTION DEPTH DIM.	3/26/08	



PCB LAYOUT

SPECIFICATIONS:

Material:
 Insulator: PBT, Glass reinforced, rated UL 94V-0
 Insulator color: Black
 Contacts: Copper Alloy
 Plating:
 Gold flash over Nickel underplate on contact area,
 Tin over Copper underplate on PCB tails

Electrical:
 Operating voltage: 250 VAC max.
 Current rating: 3 Amps max.
 Contact resistance: 30 mohms max. initial
 Insulation resistance: 3,000 Mohms min.
 Dielectric withstanding voltage: 500 VAC for 1 minute

Temperature Rating:
 Operating temperature: -40°C to +105°C

Environmental:
 Lead free, RoHS complaint
 Recommended soldering temp: 230°C for 5 seconds



A

B

C

D

A

B

C

D

6

5

4

3

2

1

ADAM TECH
 909 Rahway Avenue, Union, NJ 07083
 Phone: 908-687-5000 Fax: 908-687-5710

TITLE
 CARD EDGE CONNECTOR
 VERTICAL, PCB

UNLESS OTHERWISE SPECIFIED ALL DIMENSIONS ARE INCHES [MM] TOLERANCES: EXCEPT AS NOTED INCHES HOLES		TITLE	
X ± .10	ØX ± .10	CARD EDGE CONNECTOR VERTICAL, PCB	
.XX ± .020	ØXX ± .015		
.XXX ± .015	ØXXX ± .010		
APPROVALS		DATE	REV.
DRAWN	SS	3/23/05	A
CHECKED			
APPROVED			
SIZE	PART NO.	SCALE:	SHEET 1 OF 1
X	CE-98-U	NIS	