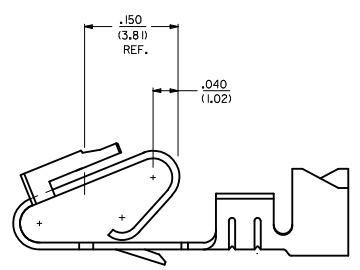
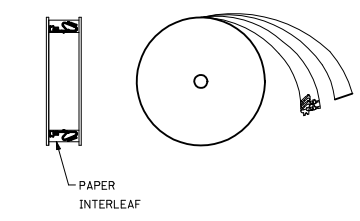


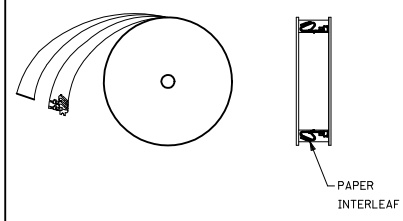
ALTERNATE GEOMETRY
SEE NOTE 10



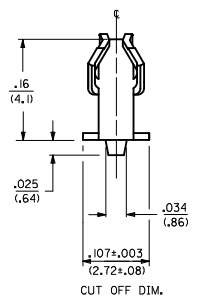
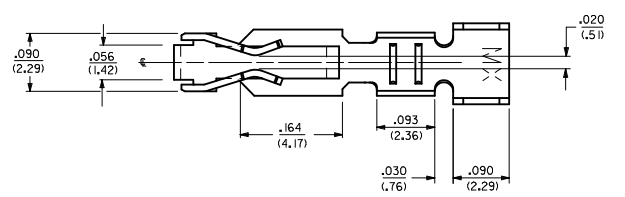
SELECTIVE PLATING
LOCATION



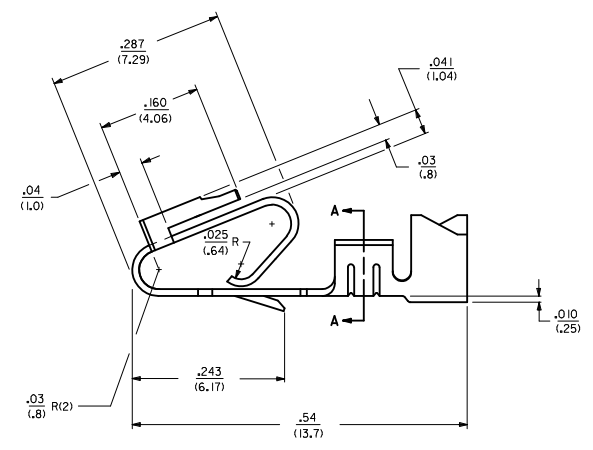
WINDING DETAIL 'A'



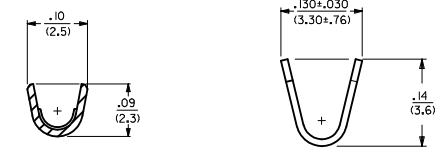
WINDING DETAIL 'B'



CUT OFF DIM.



- NOTES:
1. MATERIAL: SEE LEGEND
 2. FINISH:
909 - OVERALL HOT TIN DIP: .000100/(0.00254) MIN.
154 - OVERALL TIN: .000100/(0.00254) MIN. OVER .000050/(0.00127) MIN. NICKEL.
555 - SELECT HARD GOLD: .000015/(0.00038) MIN. OVERALL NICKEL: .000030/(0.00076) MIN.
558 - SELECT HARD GOLD: .000030/(0.00076) MIN. OVERALL NICKEL: .000050/(0.00127) MIN.
OVERALL HARD GOLD FLASH: .000002/(0.00005) MIN.
561 - SELECT HARD GOLD: .000030/(0.00076) MIN. OVERALL NICKEL: .000050/(0.00127) MIN.
 3. PRODUCT SPECIFICATION: PS-40-02
 4. PACKAGING SPECIFICATION: CHAIN FORM: SEE PK-6838-001
LOOSE FORM: SEE PK-2759-001
 5. TERMINAL FOR USE IN HOUSING SERIES 6442 AND 41695.
 6. SEE 7258 SERIES FOR THIS PART WITH CRIMP FOR 22-26 AWG. WIRE.
 7. CRIMP FOR 18 TO 20 GA. WIRE WITH MAX. INSULATION DIA. OF .100(2.79). STRIP LENGTH OF .125/100 / (3.18/2.54)
 8. DIMENSIONS GIVEN ACROSS CENTERLINES ARE SYMMETRICAL ABOUT THOSE CENTERLINES WITHIN HALF THE TOTAL TOLERANCE.
 9. THIS PART CONFORMS TO CLASS B REQUIREMENTS OF COSMETIC SPECIFICATION PS-45499-002.
 10. ALTERNATE GEOMETRY PRESENT ON SOME PART NUMBERS. SEE SHEET 2.



SECTION A-A

LEGEND: 6838- ()

WINDING
A= PER DETAIL A
BLANK= PER DETAIL B

FORM
BLANK= CHAIN
L= LOOSE

PLATING
SEE NOTE 2

MATERIAL:
(.271/.0106 THK
BLANK=BRASS
A=PHOS BRONZE

102 TO 154 PLTIG. IEC NO. UCF2012-1821 DRAWN BY: DRW/MSTROH 2012/01/04 CHECKED BY: CHY/KK/PPER 2012/01/05 APPROVED BY: APPR/FSM/TH 2012/02/02 AR	QUALITY SYMBOLS	GENERAL TOLERANCES (UNLESS SPECIFIED)	DIMENSION STYLE	SCALE	DESIGN UNITS	THIRD ANGLE PROJECTION
	▽=0	mm INCH	IN/MM	---	INCH	☉
	▽=0	4 PLACES ± --- ± ---	DRAWN BY DATE			
	▽=0	3 PLACES ± .25 ± .015	GUZIK 11/15/89			
	1 PLACE ± 0.36 ± ---	CHECKED BY DATE				
	ANGULAR ±1/2°	APPROVED BY DATE				
	DRAFT WHERE APPLICABLE MUST REMAIN WITHIN DIMENSIONS	LENZ 11/15/89				
		MATERIAL NO.	SEE CHART			
		DOCUMENT NO.	SD-6838			
		TITLE	TRIFURCON TERMINAL CRIMP TYPE .156 CENTERS 18 TO 20 AWG WIRE			
			MOLEX INCORPORATED			
			1 OF 2			

20 19 18 17 16 15 14 13 12 11 10 9 8 7 6 5 4 3 2 1

6838-(*)**

PART NO.	ENG. NO.	
08-50-0187	6838-(P909)	SEE NOTE 1
08-50-0189	6838-(P909)L	SEE NOTE 1
08-50-0275	6838-(P909)-A	

6838-A(*)**

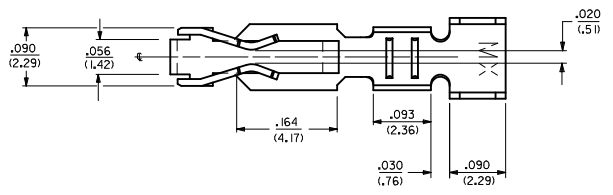
PART NO.	ENG. NO.	
08-58-0187	6838-A(P558)	
08-58-0189	6838-A(P558)L	
08-52-0112	6838-A(P909)	SEE NOTE 1
08-52-0113	6838-A(P909)L	SEE NOTE 1
08-50-0024	6838-A(154)	
08-50-0251	6838-A(154)L	
08-58-0105	6838-A(P555)	
08-58-0106	6838-A(P555)L	
08-58-0110	6838-A(P56 I)	SEE NOTE 1
08-58-0111	6838-A(P56 I)L	SEE NOTE 1
08-58-0118	6838-A(56 I)	
08-58-0119	6838-A(56 I)L	

NOTES:

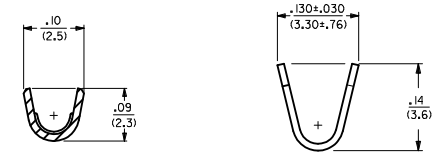
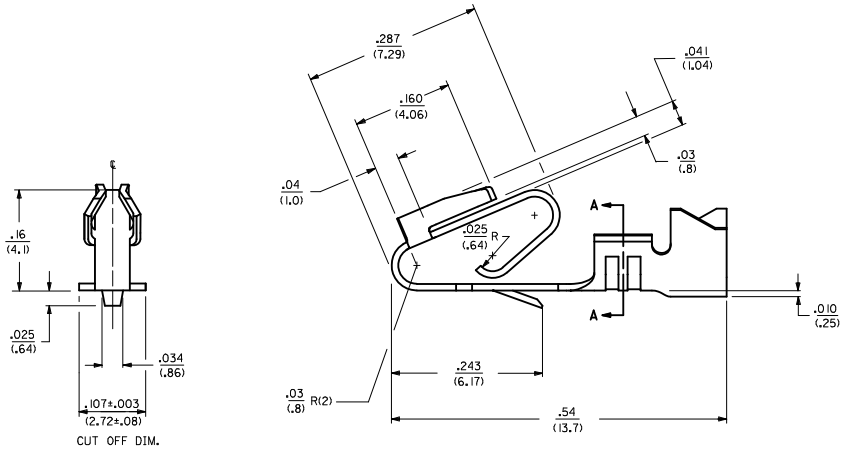
1. PART MANUFACTURED WITH ALTERNATE GEOMETRY. SEE SHEET 1.

SEE SHEET 1 IEC NO: UCF2012-1821 DRAWN BY: DRW:MMSTROH 2012/01/04 CHECKED BY: CHY:KH/KIPFER 2012/01/05 APPROVED BY: APPR:FSM/TH 2012/02/02	QUALITY SYMBOLS	GENERAL TOLERANCES (UNLESS SPECIFIED)	DIMENSION STYLE	SCALE	DESIGN UNITS	THIRD ANGLE PROJECTION
	▽=0	4 PLACES ± mm ± INCH	IN/MM	---	INCH	☉
	▽=0	3 PLACES ± mm ± INCH				
	▽=0	2 PLACES ± mm ± INCH				
		1 PLACE ± mm ± INCH				
		ANGULAR ±1/2°				
		DRAFT WHERE APPLICABLE MUST REMAIN WITHIN DIMENSIONS				
			DRAWN BY DATE	TITLE		
			GUZIK 11/15/89	TRIFURCON TERMINAL		
			CHECKED BY DATE	CRIMP TYPE, .156 CENTERS		
			PATEL 11/15/89	18 TO 20 AWG WIRE		
			APPROVED BY DATE	MOLEX INCORPORATED		
			LENZ 11/15/89	MATERIAL NO. SD-6838		
				DOCUMENT NO. 2 OF 2		
			SIZE D	THIS DRAWING CONTAINS INFORMATION THAT IS PROPRIETARY TO MOLEX INCORPORATED AND SHOULD NOT BE USED WITHOUT WRITTEN PERMISSION		

19 18 17 16 15 14 13 12 11 10 9 8 7 6 5 4 3 2 1

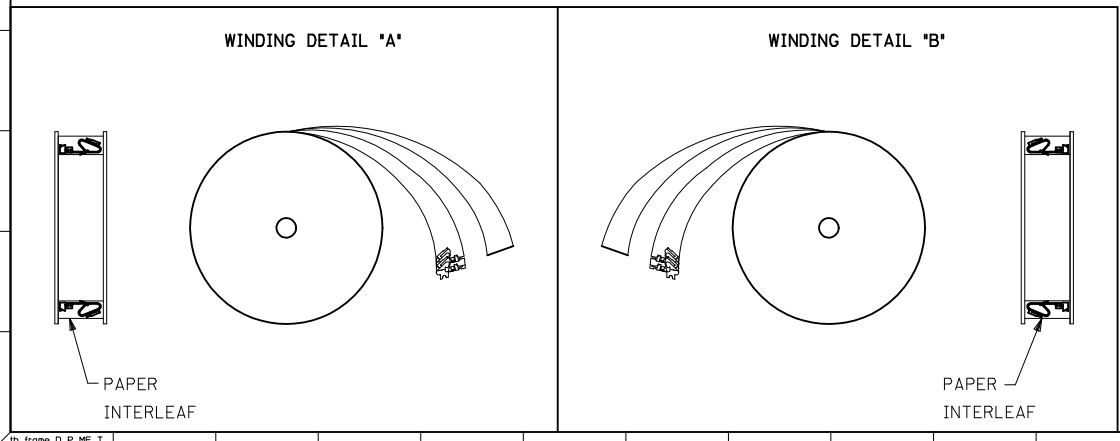
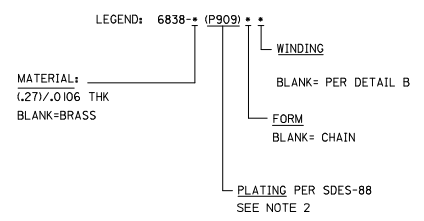


- NOTES:
1. MATERIAL: SEE LEGEND
 2. FINISH: 909 - OVERALL HOT TIN DIP: .000100/10.00254) MIN.
 3. PRODUCT SPECIFICATION: PS-40-02
 4. PACKAGING SPECIFICATION: PK-6838-001
 5. PART IS FOR USE WITH 18 TO 20 GA. WIRE WITH MAX. INSULATION DIA. OF .110/(2.79), STRIP LENGTH OF .125/.100 / (3.18/2.54).
 6. SEE 7258 SERIES FOR THIS PART WITH CRIMP FOR 22-26 AWG. WIRE.
 7. TERMINAL FOR USE IN 6442 AND 41695 SERIES HOUSINGS.
 8. DIMENSIONS GIVEN ACROSS CENTERLINES ARE SYMMETRICAL ABOUT THOSE CENTERLINES WITHIN HALF THE TOTAL TOLERANCE.
 9. THIS PART CONFORMS TO CLASS B REQUIREMENTS OF COSMETIC SPECIFICATION PS-45499-002.



SECTION A-A

CUT OFF DIM.



UPDATE GEOMETRY IEC NO. UCP2011-0681 DRAWN/KIPPER 2010/09/14 CHYKOS/SSOUSEK 2011/02/23 APPR:FSM/TH 2011/02/25	QUALITY SYMBOLS	GENERAL TOLERANCES (UNLESS SPECIFIED)	DIMENSION STYLE	SCALE	DESIGN UNITS	THIRD ANGLE PROJECTION
	▽=0	mm INCH	IN/MM	---	INCH	☉
	▽=0	4 PLACES ± --- ± ---	DRAWN BY	DATE	TITLE	
	▽=0	3 PLACES ± --- ± .010	JJS	07/29/04	TRIFURCON TERMINAL	
	2 PLACES ± 0.25 ± .015	CHECKED BY	DATE			
	1 PLACE ± 0.36 ± ---	KSS	07/29/04			
	ANGULAR ±1/2°	APPROVED BY	DATE			
	DRAFT WHERE APPLICABLE MUST REMAIN WITHIN DIMENSIONS	YM	07/29/04			
		MATERIAL NO.	50291639			
		DOCUMENT NO.	SD-6838-001			
		SHEET NO.	1 OF 1			