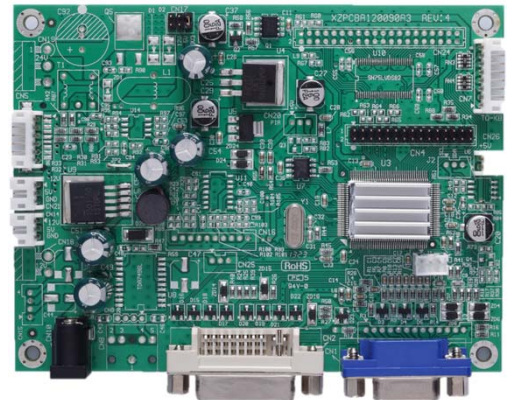


AD-904, KT-904

Standard AD board & kit for LCD display

Features

- Flexible, low cost and high performance
- For industrial, kiosk, gaming, digital signage application
- For 5.7" - 70" LCD panel with LVDS interface
- Optional RS232 remote control
- Optional light sensor for auto-dimming
- Optional LVDS-to-TTL conversion
- Optional 24V DC input
- Optional audio output (1W x 2)



Specifications

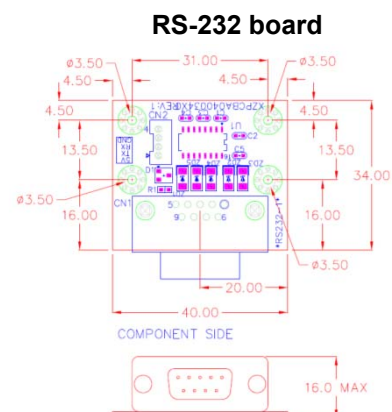
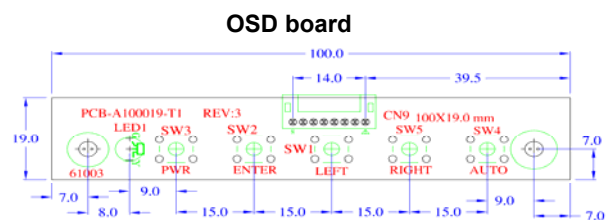
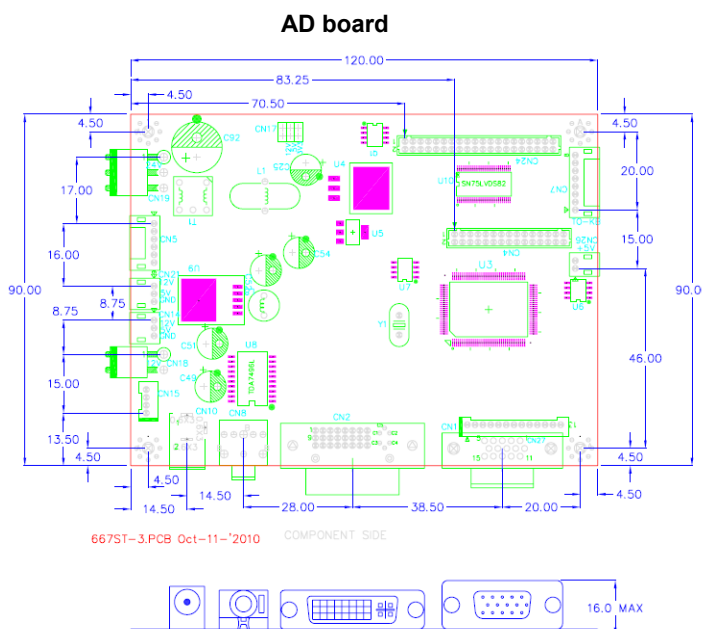
Video	Hor. Frequency	30 ~ 94 KHz
	Ver. Frequency	48 - 75 Hz
	Resolution	1920x1200 @60Hz
	Pixel rate	188MHz for VGA 165MHz for DVI
	Plug & Play	DDC 1/2 Bi, 2B+
Colors	8 bit 16.7M true color	
	9300K, 7500K, 6500K, user mode	
OSD adjustment	Power, Enter, Left, Right, Auto	
	8 multi-languages	
Temperature	Operation	-20 ~ 70 degree C
	Storage	-30 ~ 80 degree C

Input	VGA connector	15 pin D-sub
	DVI-D connector	24+5P D-sub
	DC connector	2.5mm diameter
Power	DC input	12 Vdc / 0.2A
	Consumption	< 2.5W
	Power saving	< 0.5W
	Management	VESA DPMS
	Panel selection	3.3V / 5V / 12V
Dimension	120 (L) x 90 (W) x 16 (H) mm	
	Packing quantity	100 pcs / carton
Agency	FCC / CE compliance	

Ordering information

- Kit accessory :
 - 1). OSD board
 - 2). OSD wire
- Selected options :
 - 1). LVDS wire
 - 2). LED wire or inverter wire
 - 3). VGA cable
 - 4). DVI cable
 - 5). RS232 cable
 - 6). Audio cable
 - 7). LED controller or inverter
 - 8). Power adapter
 - 9). Power cord
 - 10). RS232 board
 - 11). Light sensor board
 - 12). Speaker

Product drawing



* All specification and photos are subject to change without notice.