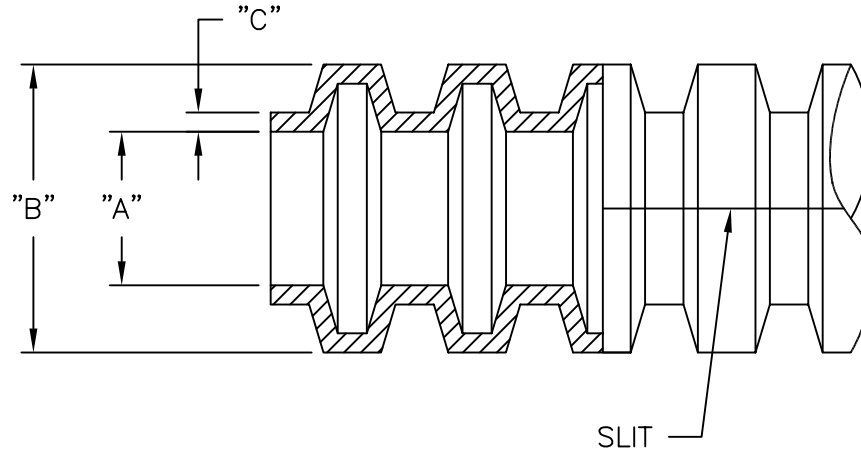
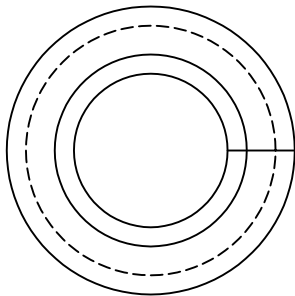


PART #	"A" ±.015 (±0.4)	"B" REF.	"C"	COIL LENGTH FEET (METERS)
CT-4	.270 (6.9)	.389 (9.9)	.017±.003 (0.40±0.08)	100 (30)
CT-6	.417 (10.6)	.545 (13.8)		100 (30)
CT-8	.505 (12.8)	.685 (17.4)		
CT-10	.655 (16.6)	.820 (20.8)		
CT-14	.760 (19.3)	.940 (23.9)	.020±.005 (0.50±0.13)	100 (30)
CT-16	.935 (23.7)	1.100 (27.9)		
CT-20	1.260 (32.0)	1.500 (38.1)		



NOTE:

1. MATERIAL: NYLON 6 (RMS-58).
2. COLOR: BLACK.
3. BULK LENGTHS ALSO AVAILABLE UPON REQUEST.

TITLE: CORRUGATED TUBE		DWG IN IN (MM)		FINAL				
E	CHANGED FILE NO. AND TITLE BLOCK	SM 10.17.01	TOLERANCES UNLESS NOTED	FILE # CT	DWN: R.S.	APP:	PART # SEE TABLE	PRINT TYPE CA
D	CHANGED ALL COIL LENGTH TO 100 FEET	JB 06.26.96	.XX=±.010	MAT'L: SEE NOTES	DT: 03-02-92	DT:		
C	CONVERTED TO AutoCad, WORD METERS ADDED	JP 8-24-95	.XXX=±.005	RE: RICHCO, INC.	RICHCO INC. PO BOX 804238, CHICAGO, 60680 (773) 539-4060			
B	TABLE REORGANIZED	RS 9-24-92	FRAC=±1/64					
A	ADDED METRIC	RS 6-17-92	ANG=±1°					
REV	DESCRIPTION	ENGR DATE						