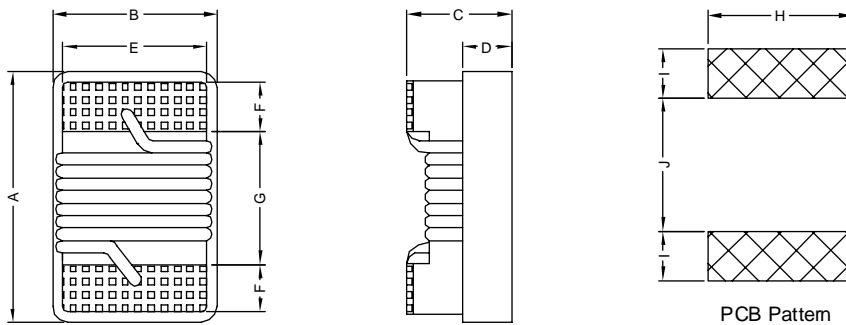


1. PART NO. EXPRESSION :

SCI0603S-1N6KF
 (a) (b) (c) (d) (e)(f)

- (a) Series code
- (b) Dimension code
- (c) Type code : S (Standard)
- (d) Inductance code : 1N6 = 1.6nH
- (e) Tolerance code : G = ±2%, J = ±5%, K = ±10%
- (f) F : RoHS Compliant

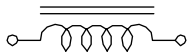
2. CONFIGURATION & DIMENSIONS :



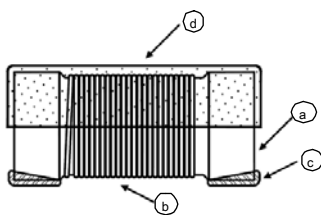
Unit:m/m

A	B	C	D	E	F	G	H	I	J
1.80 Max.	1.12 Max.	1.02 Max.	0.38 Ref.	0.76 Ref.	0.33 Ref.	0.86 Ref.	1.02 Ref.	0.64 Ref.	0.64 Ref.

3. SCHEMATIC :



4. MATERIALS :



- (a) Ceramic Core
- (b) Magnet Wire
- (c) Electrode (Ag/Pd+Ni+Sn)
- (d) UV Glue

5. GENERAL SPECIFICATION :

- a) Operating temp. : -40° C to +125° C
- b) Storage condition (component in its packaging)
 - i) Temperature : -10 to 40° C
 - ii) Humidity : 60%



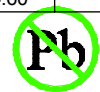
RoHS Compliant

NOTE : Specifications subject to change without notice. Please check our website for latest information.



6. ELECTRICAL CHARACTERISTICS :

Part No.	Tolerance Available	L (nH)	Test Freq (MHz)	Q Min.	SRF (MHz) Min.	DCR (Ω) Max.	IDC (mA) Max.	900MHz L Typ.	900MHz Q Typ.	1.7GHz L Typ.	1.7GHz Q Typ.
SCI0603S-1N6□F	K, J	1.6	250	24	12500	0.030	700	1.53	35	1.58	55
SCI0603S-1N8□F	K, J	1.8	250	16	12500	0.045	700	1.63	35	1.66	50
SCI0603S-2N2□F	K, J	2.2	250	15	6000	0.100	700	2.18	41	2.20	64
SCI0603S-2N3□F	K, J	2.3	250	16	>4000	0.140	700	2.32	32	2.35	40
SCI0603S-3N3□F	K, J, G	3.3	250	22	>6000	0.080	700	3.35	47	3.40	65
SCI0603S-3N6□F	K, J, G	3.6	250	22	5800	0.063	700	3.53	49	3.58	65
SCI0603S-3N9□F	K, J, G	3.9	250	22	>6000	0.080	700	3.95	49	3.96	67
SCI0603S-4N3□F	K, J, G	4.3	250	22	5800	0.063	700	4.32	49	4.43	67
SCI0603S-4N5□F	K, J, G	4.5	250	20	5800	0.120	700	4.74	55	4.87	92
SCI0603S-4N7□F	K, J, G	4.7	250	25	5800	0.120	700	4.65	53	4.80	67
SCI0603S-5N1□F	K, J, G	5.1	250	20	5800	0.160	700	5.13	47	5.36	56
SCI0603S-5N6□F	K, J, G	5.6	250	20	5800	0.170	700	5.53	56	5.86	77
SCI0603S-6N2□F	K, J, G	6.2	250	25	5800	0.110	700	6.28	60	6.40	85
SCI0603S-6N3□F	K, J, G	6.3	250	25	5800	0.110	700	6.67	41	6.86	61
SCI0603S-6N8□F	K, J, G	6.8	250	27	5800	0.110	700	6.75	60	7.10	81
SCI0603S-7N5□F	K, J, G	7.5	250	28	4800	0.106	700	7.70	60	7.82	65
SCI0603S-8N2□F	K, J, G	8.2	250	27	4800	0.110	700	8.25	64	8.40	81
SCI0603S-8N7□F	K, J, G	8.7	250	28	4800	0.109	700	8.86	62	9.32	58
SCI0603S-9N1□F	K, J, G	9.1	250	35	4800	0.130	700	9.20	70	9.70	80
SCI0603S-9N5□F	K, J, G	9.5	250	28	5400	0.135	700	9.70	59	9.92	61
SCI0603S-10N□F	K, J, G	10	250	31	4800	0.130	700	10.0	66	10.60	83
SCI0603S-11N□F	K, J, G	11	250	31	4000	0.086	700	11.3	53	12.10	56
SCI0603S-12N□F	K, J, G	12	250	35	4000	0.130	700	12.3	72	13.50	83
SCI0603S-15N□F	K, J, G	15	250	35	4000	0.170	700	15.4	64	16.80	89
SCI0603S-16N□F	K, J, G	16	250	35	3300	0.110	700	16.5	55	18.0	52
SCI0603S-17N□F	K, J, G	17	250	35	3200	0.170	700	17.6	56	19.4	44
SCI0603S-18N□F	K, J, G	18	250	35	3100	0.170	700	18.7	70	21.40	69
SCI0603S-20N□F	K, J, G	20	250	40	3000	0.190	700	20.7	80	23.5	30
SCI0603S-22N□F	K, J, G	22	250	38	3000	0.190	700	22.8	73	26.10	71
SCI0603S-23N□F	K, J, G	23	250	38	2850	0.190	700	24.1	71	28.00	71
SCI0603S-24N□F	K, J, G	24	250	38	2800	0.130	700	25.7	45	30.90	40
SCI0603S-27N□F	K, J, G	27	250	40	2800	0.220	600	29.2	74	34.60	65



RoHS Compliant

NOTE : Specifications subject to change without notice. Please check our website for latest information.

03.02.2015

Part No.	Tolerance Available	L (nH)	Test Freq (MHz)	Q Min.	SRF (MHz) Min.	DCR (Ω) Max.	IDC (mA) Max.	900MHz L Typ.	900MHz Q Typ.	1.7GHz L Typ.	1.7GHz Q Typ.
SCI0603S-30N□F	K, J, G	30	250	40	2800	0.150	600	31.4	47	39.80	28
SCI0603S-33N□F	K, J, G	33	250	40	2300	0.220	600	36.0	67	49.50	42
SCI0603S-36N□F	K, J, G	36	250	37	2300	0.250	600	39.1	47	48.90	24
SCI0603S-39N□F	K, J, G	39	250	40	2200	0.250	600	42.7	60	60.20	40
SCI0603S-43N□F	K, J, G	43	200	38	2000	0.280	600	46.9	44	60.30	21
SCI0603S-47N□F	K, J, G	47	200	38	2000	0.280	600	52.2	62	77.20	35
SCI0603S-51N□F	K, J, G	51	200	38	1900	0.280	600	55.5	69	82.20	34
SCI0603S-56N□F	K, J, G	56	200	38	1900	0.310	600	62.5	56	97.0	26
SCI0603S-62N□F	K, J, G	62	200	37	1800	0.340	600	68.0	40	110.0	10
SCI0603S-68N□F	K, J, G	68	200	37	1700	0.340	600	80.5	54	168.0	21
SCI0603S-72N□F	K, J, G	72	150	34	1700	0.490	600	82.0	53	135.0	20
SCI0603S-82N□F	K, J, G	82	150	34	1700	0.540	400	96.2	54	177.0	21
SCI0603S-91N□F	K, J, G	91	150	30	1700	0.500	400	110.0	50	416.4	6
SCI0603S-R10□F	K, J, G	100	150	34	1400	0.580	400	124.0	49	319.5	13
SCI0603S-R11□F	K, J, G	110	150	32	1350	0.610	300	138.0	43	342.7	15
SCI0603S-R12□F	K, J, G	120	150	32	1300	0.650	300	166.0	39	529.3	8
SCI0603S-R13□F	K, J, G	130	150	30	1400	0.720	300	185.0	60	-	-
SCI0603S-R14□F	K, J, G	140	100	28	1300	0.870	280	190.0	80	-	-
SCI0603S-R15□F	K, J, G	150	100	28	1300	0.950	280	230.0	25	-	-
SCI0603S-R16□F	K, J, G	160	100	25	1300	1.400	280	215.0	20	-	-
SCI0603S-R18□F	K, J, G	180	100	25	1250	1.400	250	305.0	22	-	-
SCI0603S-R22□F	K, J, G	220	100	25	1200	1.600	250	377.0	21	-	-
SCI0603S-R26□F	K, J, G	260	100	25	1000	2.000	200	469.0	21	-	-
SCI0603S-R27□F	K, J, G	270	100	25	900	2.100	200	523.0	19	-	-
SCI0603S-R28□F	K, J, G	280	100	25	1000	2.400	100	524.0	18	-	-
SCI0603S-R30□F	K, J, G	300	100	25	750	2.500	150	539.7	21	-	-
SCI0603S-R33□F	K, J, G	330	100	25	900	3.800	100	680.4	20	-	-
SCI0603S-R39□F	K, J, G	390	100	25	900	4.350	100	734.5	29	-	-
SCI0603S-R47□F	K, J, G	470	100	23	600	3.600	80	-	-	-	-

Inductance tolerance :

- : G : $\pm 2\%$
- : J : $\pm 5\%$
- : K : $\pm 10\%$



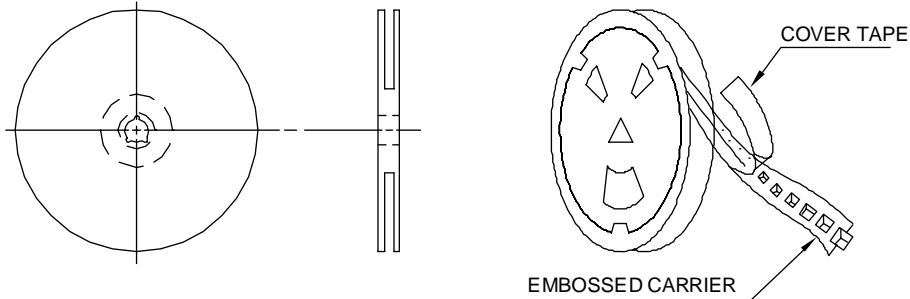
RoHS Compliant

NOTE : Specifications subject to change without notice. Please check our website for latest information.

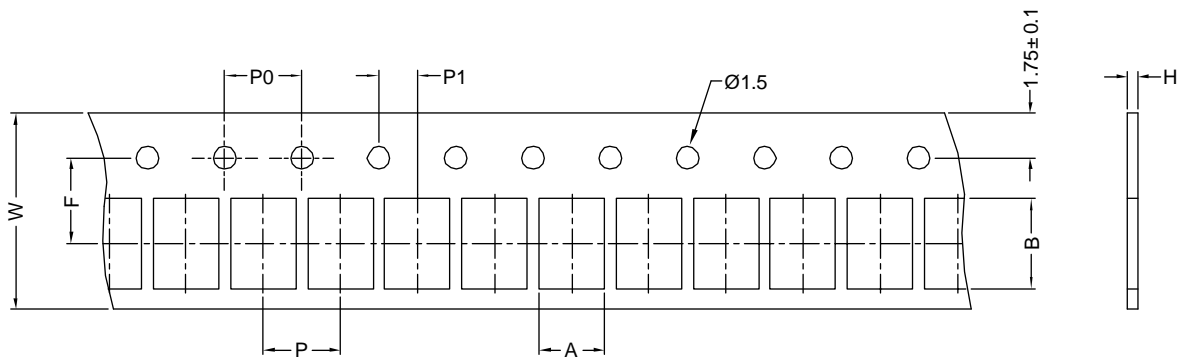


7. PACKAGING INFORMATION :

Reel Configuration :



Paper Tape :



Dimension (unit: mm)

Series	A	B	H	F	P	P0	P1	W	Qty
SCI0402S	0.72	1.19	0.60	3.50	2.00	4.00	2.00	8.00	4000pcs / reel
SCI0603S	1.35	1.95	0.95	3.50	4.00	4.00	2.00	8.00	4000pcs / reel

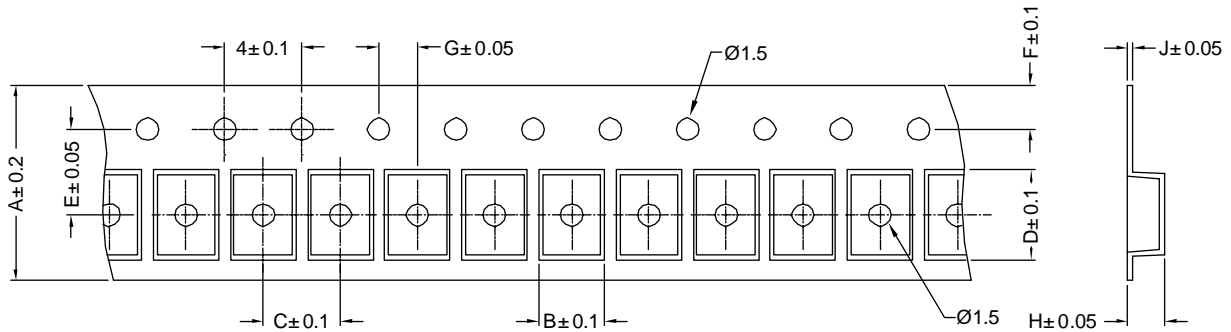


RoHS Compliant

NOTE : Specifications subject to change without notice. Please check our website for latest information.

03.02.2015

Embossed Carrier Tape :



Dimension (unit: mm)

Series	A	B	C	D	E	F	G	H	J	Qty
SCI0805S	8	1.85	4	2.30	3.5	1.75	2	1.45	0.23	2000pcs / reel
SCI0805LP	8	1.80	4	2.30	3.5	1.75	2	0.90	0.23	2000pcs / reel
SCI0805HQ	8	1.85	4	2.30	3.5	1.75	2	1.45	0.23	2000pcs / reel
SCI1008S	8	2.70	4	2.80	3.5	1.75	2	2.00	0.23	2000pcs / reel
SCI1008LP	8	2.70	4	2.80	3.5	1.75	2	1.50	0.23	2000pcs / reel
SCI1008HQ	8	2.70	4	2.80	3.5	1.75	2	2.00	0.23	2000pcs / reel



RoHS Compliant

NOTE : Specifications subject to change without notice. Please check our website for latest information.

03.02.2015



SUPERWORLD ELECTRONICS (S) PTE LTD