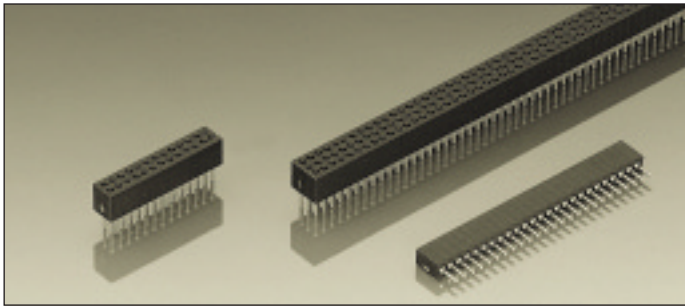


## Series 850

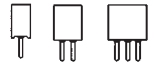
PCB connectors 1.27 mm

Single row / double row / triple row

Solder tail



### Ultraminiature PCB receptacles, solder tail



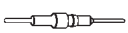


Grid spacing 1.27×1.27 mm

Receptacle for pins

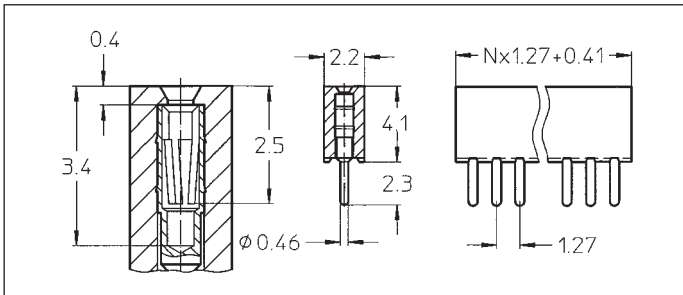
Ø 0.35–0.45 mm

For corresponding pin connectors see pages 13, 14 and 15

Platings	Sleeve 	Clip 	Pin 
91	5 µm Sn Pb	0.25 µm Au	
93	5 µm Sn Pb	0.75 µm Au	
99	5 µm Sn Pb	5 µm Sn Pb	

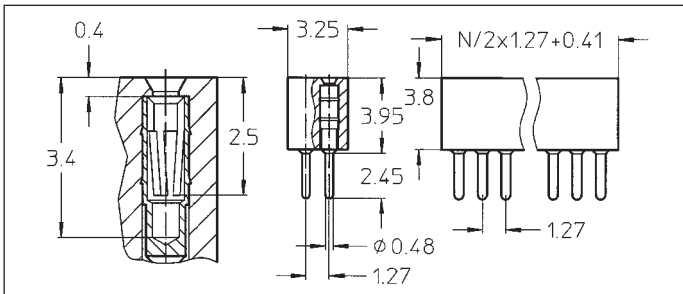
### Ordering information

Replace **xxx** with the number of poles, e.g. 853-91-**xxx**-10-001 for a double row version with 8 pins per row becomes:  
853-91-**016**-10-001



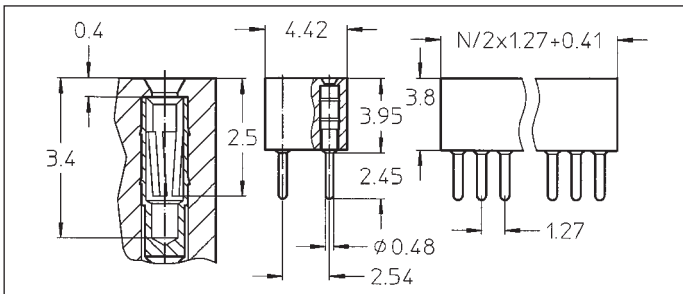
- 851-91-xxx-10-001
- 851-93-xxx-10-001
- 851-99-xxx-10-001

Straight receptacle: solder tail, single row  
Availability from: 1 to 50 contacts  
Standard number of contacts 25 and 50



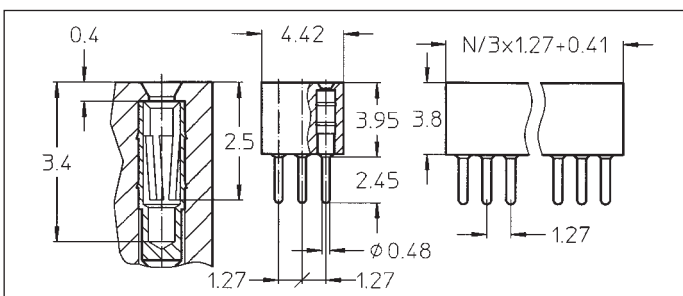
- 853-91-xxx-10-001
- 853-93-xxx-10-001
- 853-99-xxx-10-001

Straight receptacle: solder tail, double row  
Availability from: 4 to 100 contacts  
Standard number of contacts 50 and 100



- 853-91-xxx-10-002
- 853-93-xxx-10-002
- 853-99-xxx-10-002

Straight receptacle: solder tail, double row with 2.54 mm row to row distance  
Availability from: 4 to 100 contacts  
Standard number of contacts 100



- 855-91-xxx-10-001
- 855-93-xxx-10-001
- 855-99-xxx-10-001

Straight receptacle: solder tail, triple row  
Availability from: 9 to 150 contacts  
Standard number of contacts 150