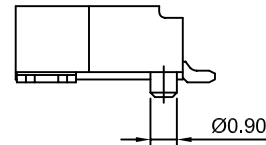


P.C.B. LAYOUT



SPECIFICATIONS:

Current Rating: 1A AC,DC
 Voltage Rating: 150V AC,DC
 Temperature Range: -40°C ~ +105°C
 Contact Resistance: 30mΩ Max.
 Insulation Resistance: 500MΩ Min.
 Withstanding Voltage: 500V AC/minute
 Pin Material: Brass/Tin over Nickel
 Solder Tabs: Brass/Tin over Nickel
 Material: Nylon 9T, UL94V-0(Ivory)

Ordering Information & Dimensions

PART NO.	Dimensions	
	A	B
A1255WR-S-F-2P	1.25	7.45
A1255WR-S-F-3P	2.50	8.70
A1255WR-S-F-4P	3.75	9.95
A1255WR-S-F-5P	5.00	11.20
A1255WR-S-F-6P	6.25	12.45
A1255WR-S-F-7P	7.50	13.70
A1255WR-S-F-8P	8.75	14.95
A1255WR-S-F-9P	10.00	16.20
A1255WR-S-F-10P	11.25	17.45
A1255WR-S-F-11P	12.50	18.70
A1255WR-S-F-12P	13.75	19.95
A1255WR-S-F-13P	15.00	21.20
A1255WR-S-F-14P	16.25	22.45
A1255WR-S-F-15P	17.50	23.70
A1255WR-S-F-20P	23.75	29.95
A1255WR-S-F-25P	30.00	36.20
A1255WR-S-F-30P	36.25	42.45

Unit: mm

CJT CHANGJIANG CONNECTORS CO.,LTD.
CHANGJIANG CONNECTORS

Unit	Scale	Sheet
mm	4:1	1 of 1

Draw BY:	Approved :
LIZQ	GONGYB

General Tolerance	
x.xx±0.25	ANGLE±
x.xx±0.20	
x.xx±0.15	

Title :
1.25mm PITCH
90° WAFER-SMT TYPE
ULTRA LOW PROFILE
WITHOUT-BOSS

DRAW NO : A1255WR-S-F-XP

REV
A0

A0	NEW RELEASE	2005.05.10
REV	DESCRIPTION	DATE