

**PLEASE CHECK WWW.MOLEX.COM FOR LATEST PART INFORMATION**

**Part Number:** [0877921116](#)  
**Status:** **Active**  
**Description:** 2.00mm (.079") Pitch Board-to-Board Panel Detachable, PCB Header, Surface Mount, 16 Circuits, Gold (Au) Selective Plating, with Pick-and-Place Cap, Tube Packaging, Lead-free

**Documents:**

[Drawing \(PDF\)](#) [RoHS Certificate of Compliance \(PDF\)](#)  
[Product Specification PS-87791-014 \(PDF\)](#)

**General**

Product Family	PCB Headers
Series	<a href="#">87792</a>
Application	Board-to-Board
Comments	Panel Detachable
Product Name	N/A

**Physical**

Breakaway	No
Circuits (Loaded)	16
Circuits (maximum)	16
Durability (mating cycles max)	15,000
First Mate / Last Break	No
Glow-Wire Compliant	No
Guide to Mating Part	No
Keying to Mating Part	None
Lock to Mating Part	None
Mated Height (in)	0.309 In
Mated Height (mm)	7.85 mm
Material - Plating Mating	Gold
Material - Plating Termination	Tin
Number of Rows	2
Orientation	Vertical
PCB Locator	Yes
PCB Retention	None
PCB Thickness Recommended (in)	0.062 In
PCB Thickness Recommended (mm)	1.60 mm
Packaging Type	Tube
Pitch - Mating Interface (in)	0.079 In
Pitch - Mating Interface (mm)	2.00 mm
Polarized to Mating Part	No
Polarized to PCB	No
Robotic Placement	Pick and Place Cap
Shrouded	No
Stackable	No
Surface Mount Compatible (SMC)	N/A
Temperature Range - Operating	-25°C to +70°C
Termination Interface: Style	Surface Mount

**Electrical**

Current - Maximum per Contact	1A
Voltage - Maximum	125V

**Material Info**

**Reference - Drawing Numbers**

Product Specification	PS-87791-014, RPS-87791-005
-----------------------	-----------------------------



*image - Reference only*

*Series*

**EU RoHS**

**ELV and RoHS Compliant**  
**REACH SVHC**  
 Not Reviewed  
**Halogen-Free Status**  
 Not Reviewed

**China RoHS**



**Need more information on product environmental compliance?**

Email [productcompliance@molex.com](mailto:productcompliance@molex.com)  
 For a multiple part number RoHS Certificate of Compliance, [click here](#)

Please visit the [Contact Us](#) section for any non-product compliance questions.

**Search Parts in this Series**

[87792Series](#)

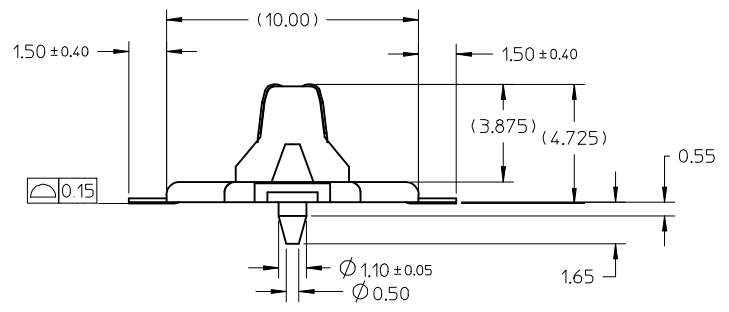
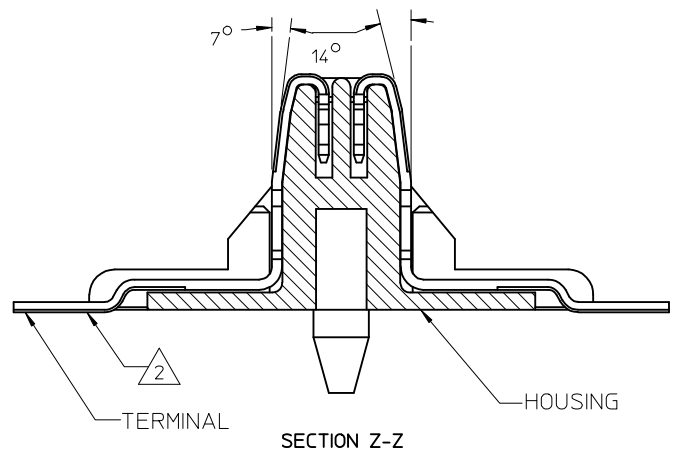
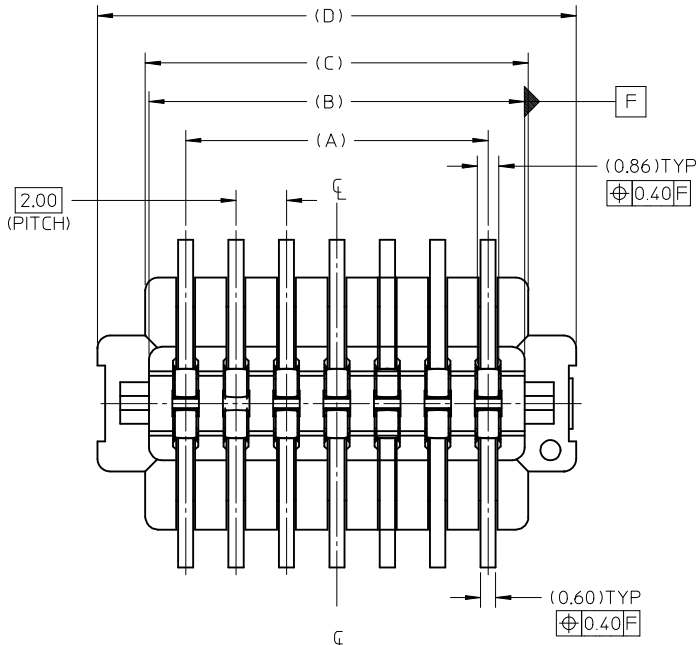
**Mates With**

[877910116](#) Board-to-Board Panel Detachable

This document was generated on 04/19/2010

**PLEASE CHECK [WWW.MOLEX.COM](http://WWW.MOLEX.COM) FOR LATEST PART INFORMATION**

PLATING OPTION	ASSEMBLY P/N WITHOUT CAP IN TUBE	CKT SIZE	A	B	C	D	E
Au PLATING CONTACT AND TIN AT SOLDER TAIL	87792-0114	14	12.00	14.90	15.20	19.00	16.00
	87792-0116	16	14.00	16.90	17.20	21.00	18.00
	-	20	18.00	20.90	21.20	25.00	22.00



- NOTES:
- MATERIALS :  
 HOUSING : PA46, UL94V-0, COLOR : BLACK  
 CAP : PA46, UL94V-0, COLOR: BIEGE.  
 MAXIMUM REGRIND ALLOWABLE FOR CAP IS 100%.  
 TERMINAL : PHOSPHOR BRONZE.  
 EMBOSSED TAPE AND REEL : BLACK POLYSTYRENE CONDUCTIVE.
  - PLATING : SEE TABLE.
  - MATING PARTS REFERENCE : 87791-0\*\*\* or 87793-0\*\*\*
  - REFER TO PRODUCT SPEC. PS-87791-014 FOR PERFORMANCE SPEC.
  - CONTACT AND SOLDER TAIL AREAS MUST BE FREE FROM CUTTING BURR.
  - NO SPECIFIC REQUIREMENT - OF APPEARANCE/ COSMETIC TO THE CAP.
  - CAP COVER RETENTION FORCE BEFORE RESISTANCE TO SOLDERING HEAT: 350gf MIN..
  - MAXIMUM ALLOWABLE OF FLASH AT SLOT IS 0.20MM. MAX.

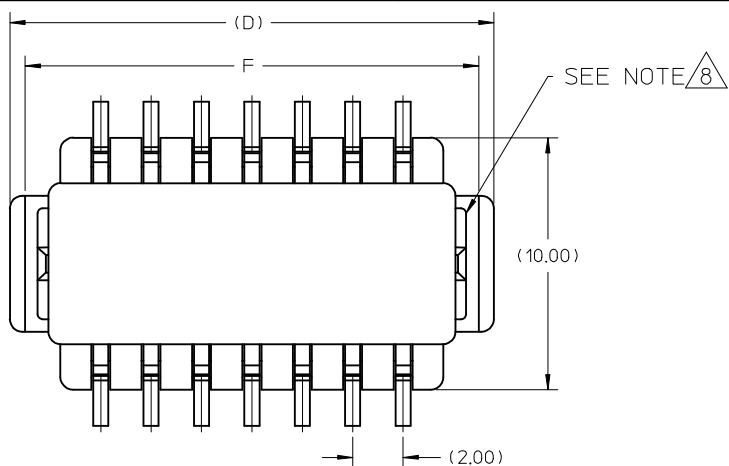
UPDATE DIMENSION EC NO: S2008-0498 DRW: NAI SEE 2008/09/25 CHK: DSKANG 2008/09/26 APPR: MLONG 2008/09/26	QUALITY SYMBOLS	GENERAL TOLERANCES (UNLESS SPECIFIED)	DIMENSION STYLE	SCALE	DESIGN UNITS	THIRD ANGLE PROJECTION
	▽=0 ∇=0	mm INCH	MM ONLY	NTS	METRIC	

4 PLACES	± ---	± ---
3 PLACES	± ---	± ---
2 PLACES	± 0.25	± ---
1 PLACE	± ---	± ---
ANGULAR ± 3 °		
DRAFT WHERE APPLICABLE MUST REMAIN WITHIN DIMENSIONS		

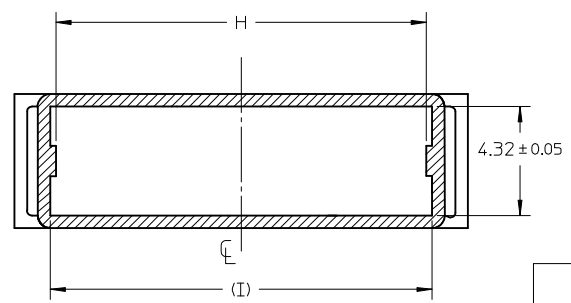
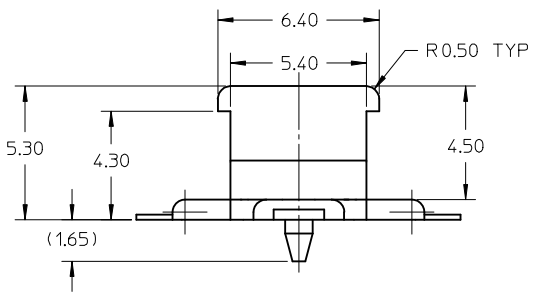
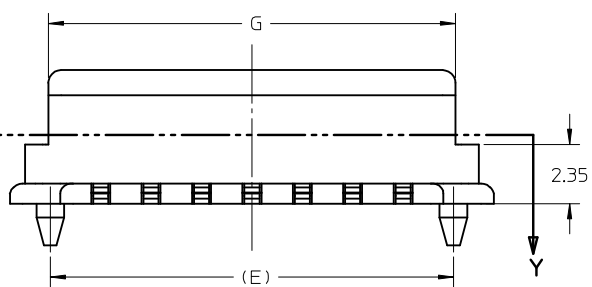
DRAWN BY	DATE	TITLE
CGOH	2004/08/05	2.0 B/B CONN. PLUG SMT (PANEL DETACHABLE TYPE) IN TUBE AND T&R
CHECKED BY	DATE	
PTL IM	2004/10/01	
APPROVED BY	DATE	
SCLOW	2004/11/01	
MATERIAL NO.	DOCUMENT NO.	
SEE TABLE	SD-87792-005	

MOLEX INCORPORATED		SHEET NO.
		1 OF 4
THIS DRAWING CONTAINS INFORMATION THAT IS PROPRIETARY TO MOLEX INCORPORATED AND SHOULD NOT BE USED WITHOUT WRITTEN PERMISSION		

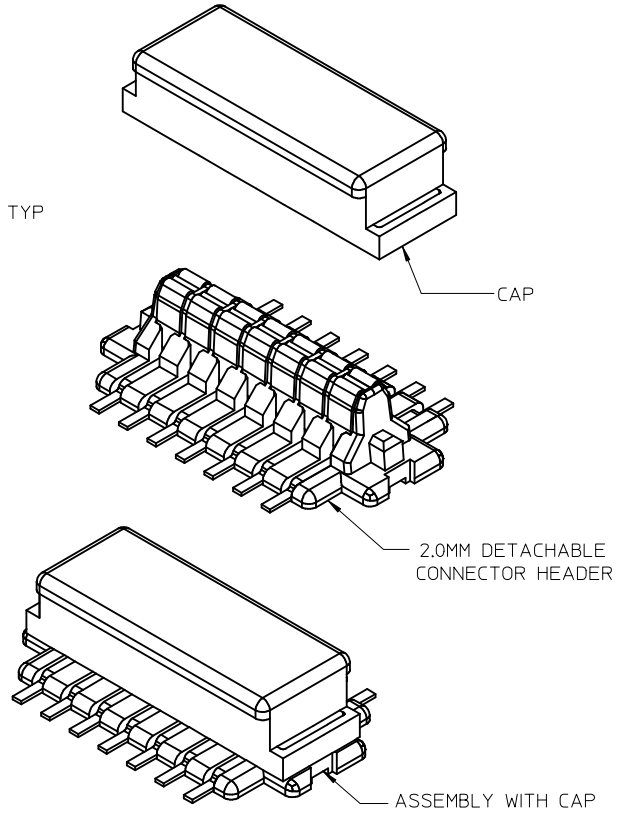
10 9 8 7 6 5 4 3 2 1



PLATING OPTION	ASSEMBLY P/N WITH CAP IN TUBE	CAP P/N	CKT	F	G	H	I
Au PLATING AT CONTACT AREA AND TIN AT SOLDER TAIL	87792-114	87792-0003	14	18.20	16.15	14.70	15.15
	87792-116	87792-0004	16	20.20	18.15	16.70	17.15
	87792-120	87792-0005	20	24.20	22.15	20.70	21.15



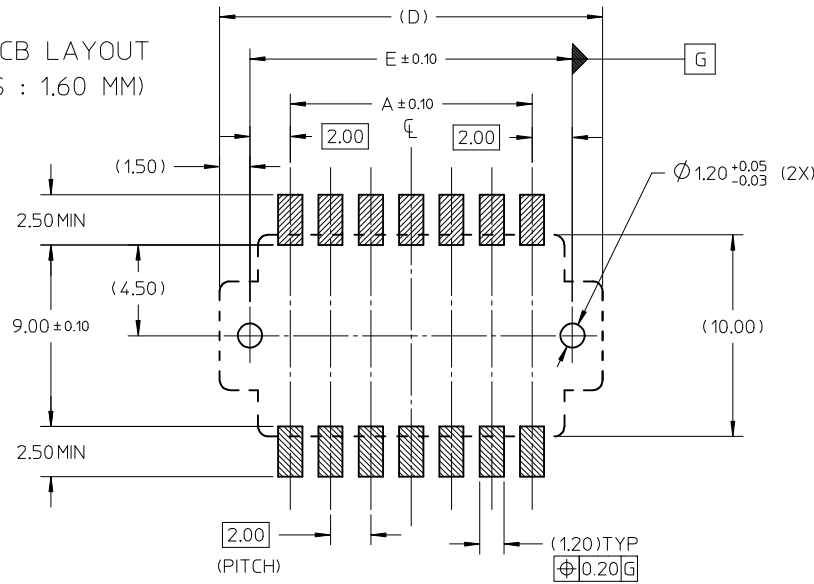
SECTION Y-Y  
(COVER ONLY)



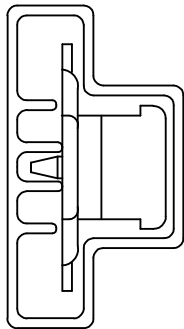
<b>UPDATE DIMENSION</b> EC NO: S2008-0498 DR: WATSEE 2008/09/25 CHK: DSKANG 2008/09/26 APPR: MLONG 2008/09/26	QUALITY SYMBOLS ▽=0 ◻=0	GENERAL TOLERANCES (UNLESS SPECIFIED)	DIMENSION STYLE MM ONLY	SCALE NTS	DESIGN UNITS METRIC	THIRD ANGLE PROJECTION															
		<table border="1"> <thead> <tr> <th></th> <th>mm</th> <th>INCH</th> </tr> </thead> <tbody> <tr> <td>4 PLACES</td> <td>± ---</td> <td>± ---</td> </tr> <tr> <td>3 PLACES</td> <td>± ---</td> <td>± ---</td> </tr> <tr> <td>2 PLACES</td> <td>± 0.25</td> <td>± ---</td> </tr> <tr> <td>1 PLACE</td> <td>± ---</td> <td>± ---</td> </tr> </tbody> </table>		mm	INCH	4 PLACES	± ---	± ---	3 PLACES	± ---	± ---	2 PLACES	± 0.25	± ---	1 PLACE	± ---	± ---	DRAWN BY: CGOH CHECKED BY: PTLIM APPROVED BY: SCLOW	DATE: 2004/08/05 DATE: 2004/10/01 DATE: 2004/11/01	TITLE: 2.0 B/B CONN. PLUG SMT (PANEL DETACHABLE TYPE) IN TUBE AND T&R	
		mm	INCH																		
	4 PLACES	± ---	± ---																		
3 PLACES	± ---	± ---																			
2 PLACES	± 0.25	± ---																			
1 PLACE	± ---	± ---																			
	ANGULAR ± 3 °	DRAFT WHERE APPLICABLE MUST REMAIN WITHIN DIMENSIONS	MATERIAL NO.: SEE TABLE	DOCUMENT NO.: MOLEX INCORPORATED	SHEET NO.: 2 OF 4																
			SIZE: A3	THIS DRAWING CONTAINS INFORMATION THAT IS PROPRIETARY TO MOLEX INCORPORATED AND SHOULD NOT BE USED WITHOUT WRITTEN PERMISSION																	

9 8 7 6 5 4 3 2 1

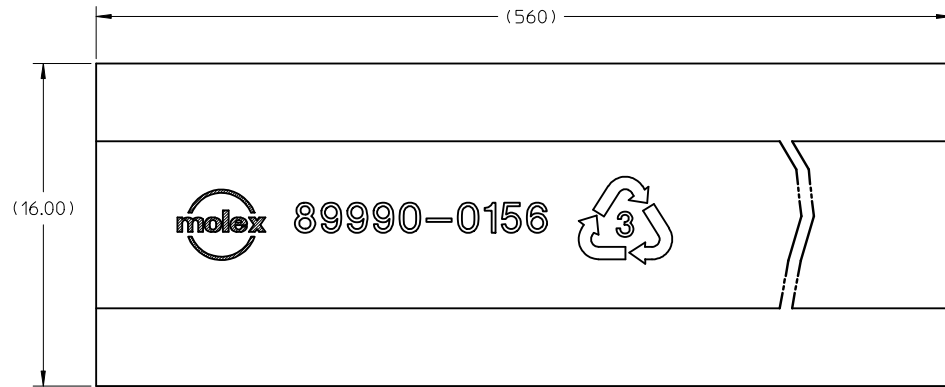
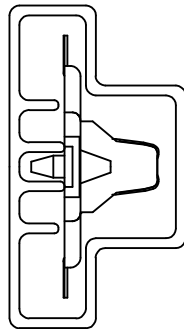
RECOMMENDED PCB LAYOUT  
(PCB THICKNESS : 1.60 MM)



ASSEMBLY WITH CAP  
IN TUBE



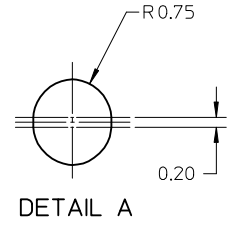
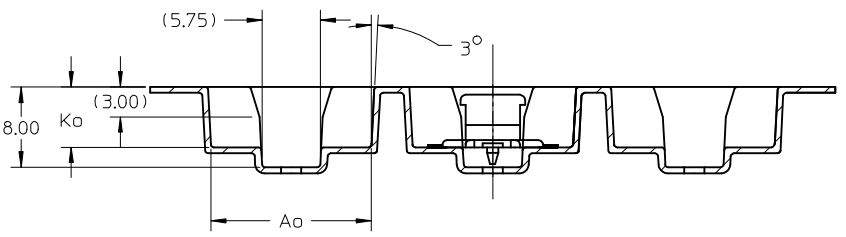
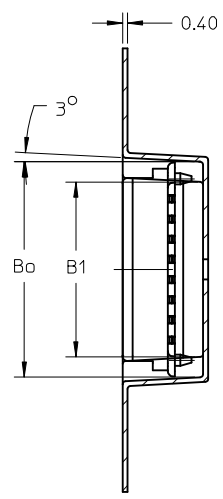
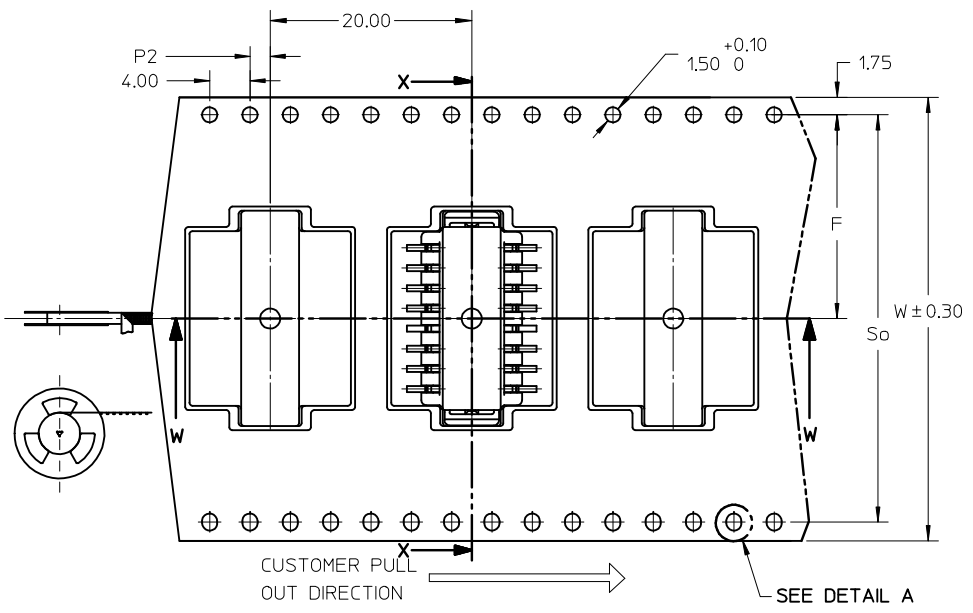
ASSEMBLY WITHOUT  
CAP IN TUBE



UPATE DIMENSION EC NO: S2008-0498 DRWN:ATSEE 2008/09/25 CHKD:SKANG 2008/09/26 APPR:MLONG 2008/09/26	QUALITY SYMBOLS ▽=0 ◻=0	GENERAL TOLERANCES (UNLESS SPECIFIED) mm INCH 4 PLACES ± --- ± --- 3 PLACES ± --- ± --- 2 PLACES ± 0.25 ± --- 1 PLACE ± --- ± --- ANGULAR ± 3 °	DIMENSION STYLE MM ONLY DRAWN BY CGOH DATE 2004/08/05 CHECKED BY PTL IM DATE 2004/10/01 APPROVED BY SCLOW DATE 2004/11/01	SCALE NTS	DESIGN UNITS METRIC	THIRD ANGLE PROJECTION
	DRAFT WHERE APPLICABLE MUST REMAIN WITHIN DIMENSIONS	MATERIAL NO. SEE TABLE	TITLE 2.0 B/B CONN. PLUG SMT (PANEL DETACHABLE TYPE) IN TUBE AND T&R	MOLEX INCORPORATED	DOCUMENT NO. SD-87792-005	SHEET NO. 3 OF 4
	THIS DRAWING CONTAINS INFORMATION THAT IS PROPRIETARY TO MOLEX INCORPORATED AND SHOULD NOT BE USED WITHOUT WRITTEN PERMISSION					
	SIZE A3					

TAPE AND REEL DETAIL

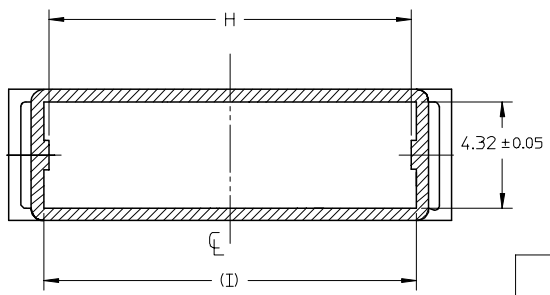
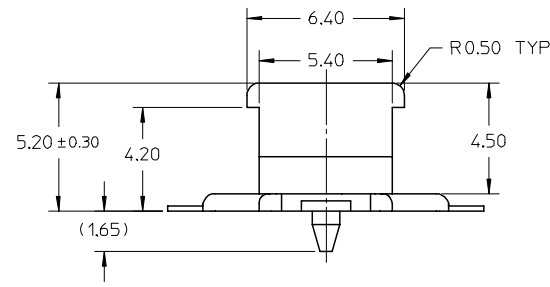
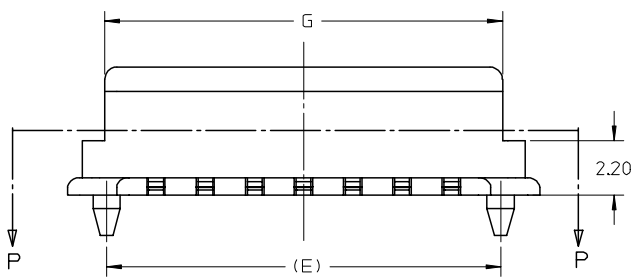
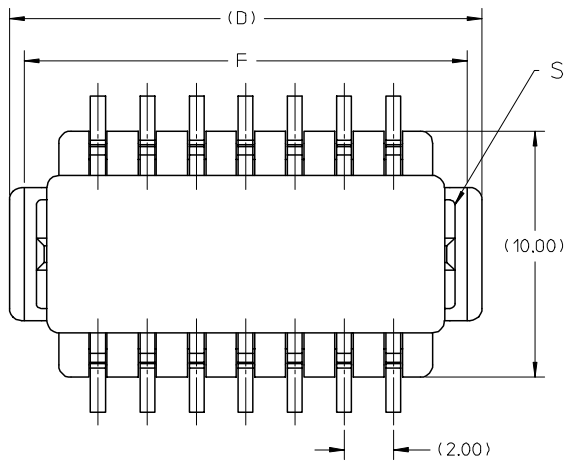
PLATING OPTION	ASSEMBLY P/N WITH CAP IN TAPE & REEL	CKT SIZE	F	Bo	B1	So	W	Ao	Ko	P2
Au PLATING AT CONTACT AREA AND TIN AT SOLDER TAIL	87792-2116	16	20.20	21.35	17.35	40.40	44.00	15.90	6.00	2.00
	87792-2120	20		25.35	21.35					



NOTES:

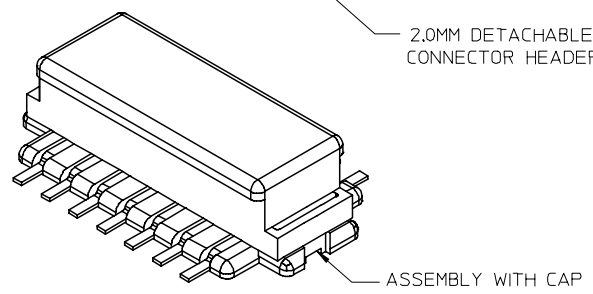
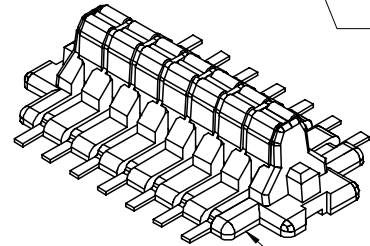
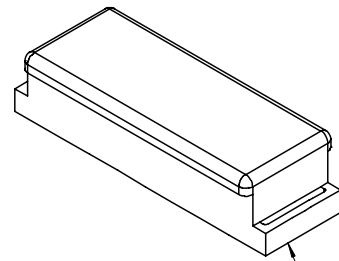
- LEADER AND TRAILER TAPE
- PEELING OFF FORCE OF THE TOP TAPE: 20 - 80gf. (PEELING DIRECTION AS SHOWN IN FOLLOWING FIGURE)
- TAPE AND REEL SPECIFICATION IS AS PER EIA-481.
- TAPE AND REEL QUANTITY : 520 PCS/ REEL
- THE TAPE IS TREATED FOR ANTI-STATIC.

UPATE DIMENSION EC NO: S2008-0498 DRWN:ATSEE 2008/09/25 CHKD:SKANG 2008/09/26 APPR:MLONG 2008/09/26	QUALITY SYMBOLS	GENERAL TOLERANCES (UNLESS SPECIFIED)	DIMENSION STYLE	SCALE	DESIGN UNITS	THIRD ANGLE PROJECTION
	▽=0 □=0	mm    INCH 4 PLACES ± --- ± --- 3 PLACES ± --- ± --- 2 PLACES ± 0.25 ± --- 1 PLACE ± --- ± --- ANGULAR ± 3 °	MM ONLY	NTS	METRIC	
	DESCRIPTION	DRAFT WHERE APPLICABLE MUST REMAIN WITHIN DIMENSIONS	DRAWN BY: CGOH    DATE: 2004/08/05 CHECKED BY: PTLIM    DATE: 2004/10/01 APPROVED BY: SCLW    DATE: 2004/11/01	TITLE	2.0 B/B CONN. PLUG SMT (PANEL DETACHABLE TYPE) IN TUBE AND T&R	
	REV		MATERIAL NO.	SEE TABLE	DOCUMENT NO.	MOLEX INCORPORATED SD-87792-005



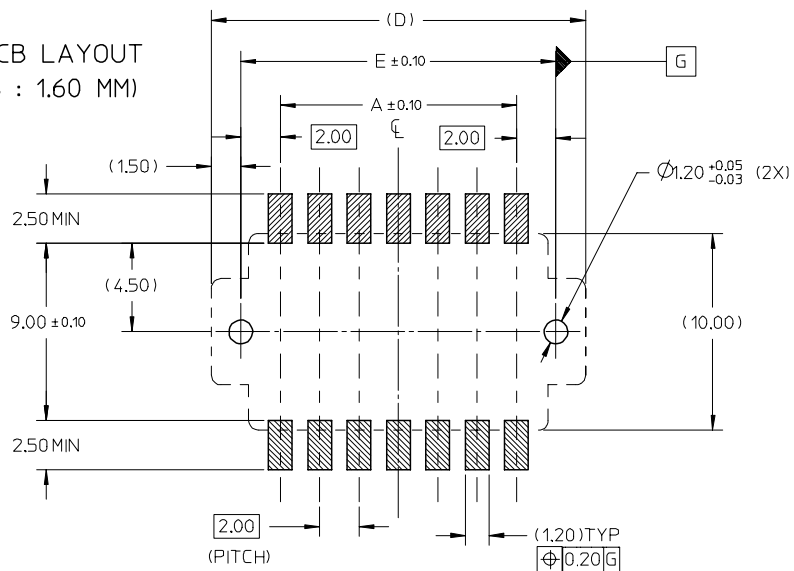
SECTION P-P  
(COVER ONLY)

PLATING OPTION	ASSEMBLY P/N WITH CAP IN TUBE		CKT	F	G	H	I
	ASSEMBLY P/N WITH CAP IN TUBE	CAP P/N					
Au PLATING AT CONTACT AREA AND TIN/LEAD AT SOLDER TAIL	87792-1014	87792-0003	14	18.20	16.15	14.70	15.15
	87792-1016	87792-0004	16	20.20	18.15	16.70	17.15
Au PLATING AT CONTACT AREA AND TIN AT SOLDER TAIL	87792-1114	87792-0003	14	18.20	16.15	14.70	15.15
	87792-1116	87792-0004	16	20.20	18.15	16.70	17.15
	87792-1120	87792-0005	20	24.20	22.15	20.70	21.15

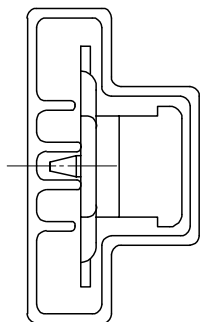


REVISED PER EC NO: S2006-0838 DRWN:CGOH CHKD:NAGESHKN APPR:PTLIM 2006/07/12 2006/07/12 2006/07/12	QUALITY SYMBOLS	GENERAL TOLERANCES (UNLESS SPECIFIED)	DIMENSION STYLE	SCALE	DESIGN UNITS	THIRD ANGLE PROJECTION															
	$\nabla=0$ $\sphericalangle=0$	<table border="1"> <thead> <tr> <th></th> <th>mm</th> <th>INCH</th> </tr> </thead> <tbody> <tr> <td>4 PLACES</td> <td>± ---</td> <td>± ---</td> </tr> <tr> <td>3 PLACES</td> <td>± ---</td> <td>± ---</td> </tr> <tr> <td>2 PLACES</td> <td>± 0.25</td> <td>± ---</td> </tr> <tr> <td>1 PLACE</td> <td>± ---</td> <td>± ---</td> </tr> </tbody> </table>		mm	INCH	4 PLACES	± ---	± ---	3 PLACES	± ---	± ---	2 PLACES	± 0.25	± ---	1 PLACE	± ---	± ---	MM ONLY	NTS	METRIC	
		mm	INCH																		
	4 PLACES	± ---	± ---																		
	3 PLACES	± ---	± ---																		
2 PLACES	± 0.25	± ---																			
1 PLACE	± ---	± ---																			
DESCRIPTION	<table border="1"> <thead> <tr> <th>DESCRIPTION</th> <th>DATE</th> </tr> </thead> <tbody> <tr> <td>DRAWN BY CGOH</td> <td>2004/08/05</td> </tr> <tr> <td>CHECKED BY PTLIM</td> <td>2004/10/01</td> </tr> <tr> <td>APPROVED BY SCLOW</td> <td>2004/11/01</td> </tr> </tbody> </table>	DESCRIPTION	DATE	DRAWN BY CGOH	2004/08/05	CHECKED BY PTLIM	2004/10/01	APPROVED BY SCLOW	2004/11/01	TITLE	2.0 B/B CONN. PLUG SMT (PANEL DETACHABLE TYPE) IN TUBE AND T&R										
DESCRIPTION	DATE																				
DRAWN BY CGOH	2004/08/05																				
CHECKED BY PTLIM	2004/10/01																				
APPROVED BY SCLOW	2004/11/01																				
REV	MATERIAL NO. SEE TABLE	DOCUMENT NO. SD-87792-005	MOLEX INCORPORATED																		
B5	DRAFT WHERE APPLICABLE MUST REMAIN WITHIN DIMENSIONS	SIZE A3	SHEET NO. 2 OF 4		THIS DRAWING CONTAINS INFORMATION THAT IS PROPRIETARY TO MOLEX INCORPORATED AND SHOULD NOT BE USED WITHOUT WRITTEN PERMISSION																

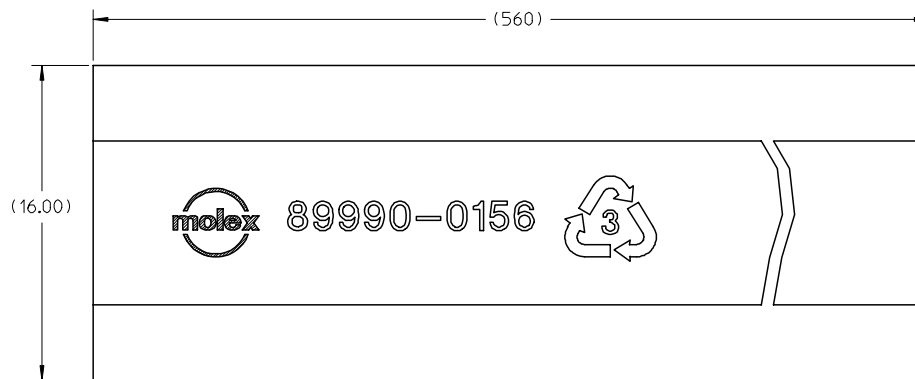
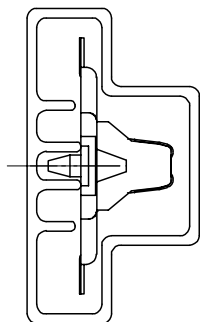
RECOMMENDED PCB LAYOUT  
(PCB THICKNESS : 1.60 MM)



ASSEMBLY WITH CAP  
IN TUBE



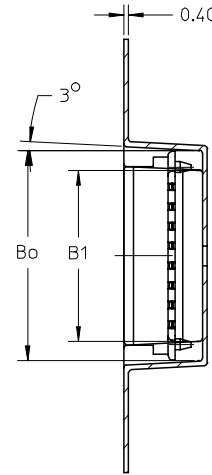
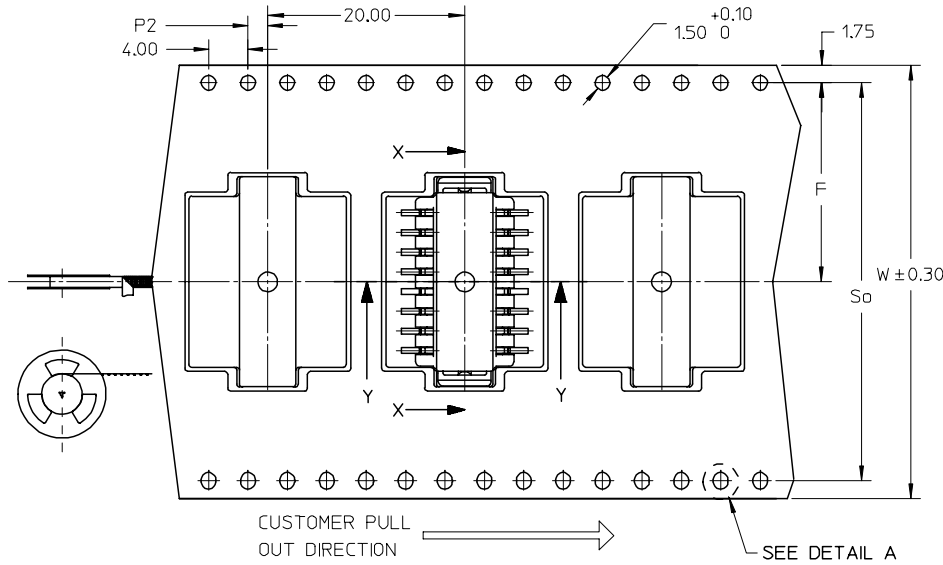
ASSEMBLY WITHOUT  
CAP IN TUBE



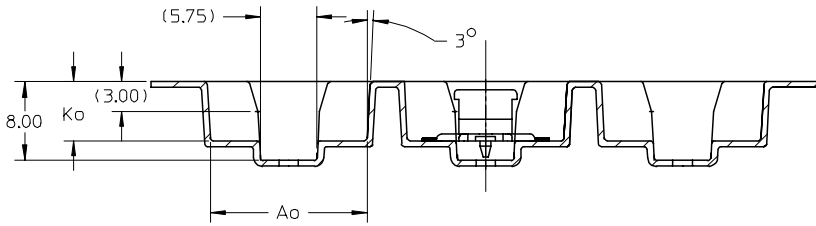
REVISED PER EC NO: S2006-0838 DRWN:CGOH CHKD:NAGESHKN APPR:PTLIM 2006/07/12 2006/07/12 2006/07/12	QUALITY SYMBOLS	GENERAL TOLERANCES (UNLESS SPECIFIED)	DIMENSION STYLE	SCALE	DESIGN UNITS	THIRD ANGLE PROJECTION															
	$\nabla=0$ $\nabla C=0$	<table border="1"> <thead> <tr> <th></th> <th>mm</th> <th>INCH</th> </tr> </thead> <tbody> <tr> <td>4 PLACES</td> <td>± ---</td> <td>± ---</td> </tr> <tr> <td>3 PLACES</td> <td>± ---</td> <td>± ---</td> </tr> <tr> <td>2 PLACES</td> <td>± 0.25</td> <td>± ---</td> </tr> <tr> <td>1 PLACE</td> <td>± ---</td> <td>± ---</td> </tr> </tbody> </table>		mm	INCH	4 PLACES	± ---	± ---	3 PLACES	± ---	± ---	2 PLACES	± 0.25	± ---	1 PLACE	± ---	± ---	MM ONLY	NTS	METRIC	
		mm	INCH																		
	4 PLACES	± ---	± ---																		
3 PLACES	± ---	± ---																			
2 PLACES	± 0.25	± ---																			
1 PLACE	± ---	± ---																			
DESCRIPTION	ANGULAR ± 3 °	DRAWN BY	DATE	TITLE																	
REV		CGOH	2004/08/05	2.0 B/B CONN. PLUG SMT (PANEL DETACHABLE TYPE) IN TUBE AND T&R																	
		PTLIM	2004/10/01	MOLEX INCORPORATED																	
		SCLOW	2004/11/01	MOLEX INCORPORATED																	
		MATERIAL NO.	SEE TABLE	DOCUMENT NO.	SHEET NO.																
		SIZE	A3	SD-87792-005	3 OF 4																
		DRAFT WHERE APPLICABLE MUST REMAIN WITHIN DIMENSIONS																			
		THIS DRAWING CONTAINS INFORMATION THAT IS PROPRIETARY TO MOLEX INCORPORATED AND SHOULD NOT BE USED WITHOUT WRITTEN PERMISSION																			

TAPE AND REEL DETAIL

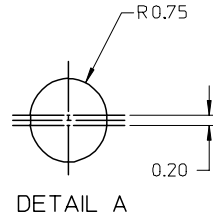
PLATING OPTION	ASSEMBLY P/N WITH CAP IN TAPE & REEL	CKT SIZE	F	Bo	B1	So	W	Ao	Ko	P2
Au PLATING AT CONTACT AREA AND TIN/LEAD AT SOLDER TAIL	87792-2016	16	20.20	21.35	17.35	40.40	44.00	15.90	6.00	2.00
Au PLATING AT CONTACT AREA AND TIN AT SOLDER TAIL	87792-2116									
	87792-2120	20		25.35	21.35					



SECTION X-X



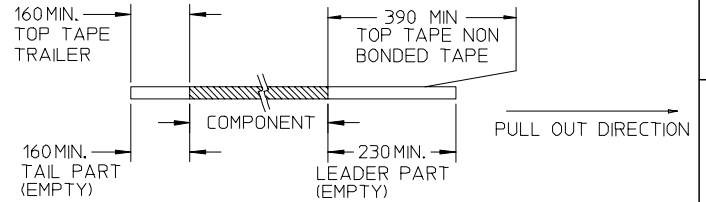
SECTION Y-Y



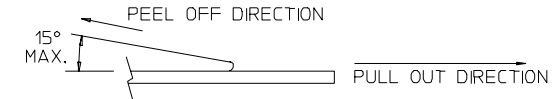
DETAIL A

NOTES:

1. LEADER AND TRAILER TAPE



2. PEELING OFF FORCE OF THE TOP TAPE: 20 - 80gf. (PEELING DIRECTION AS SHOWN IN FOLLOWING FIGURE)



3. TAPE AND REEL SPECIFICATION IS AS PER EIA-481.

4. TAPE AND REEL QUANTITY : 520 PCS/ REEL

5. THE TAPE IS TREATED FOR ANTI-STATIC.

REVISED PER EC NO: S2006-0838 DRWN: CGOH CHKD: NAGESHKN APPR: PTLIM 2006/07/12 2006/07/12 2006/07/12	QUALITY SYMBOLS ▽=0 ▽=0	GENERAL TOLERANCES (UNLESS SPECIFIED)		DIMENSION STYLE	SCALE	DESIGN UNITS	THIRD ANGLE PROJECTION		
				MM ONLY	NTS	METRIC			
		4 PLACES	± ---	± ---	DRAWN BY	DATE	TITLE		
		3 PLACES	± ---	± ---	CGOH	2004/08/05	2.0 B/B CONN. PLUG SMT (PANEL DETACHABLE TYPE) IN TUBE AND T&R		
2 PLACES	± 0.25	± ---	2 PLACES	± 0.25	± ---	PTLIM	2004/10/01	MOLEX INCORPORATED	
1 PLACE	± ---	± ---	1 PLACE	± ---	± ---	APPROVED BY	DATE	MATERIAL NO.	
		ANGULAR ± 3°		SCLOW	2004/11/01	DOCUMENT NO.		SHEET NO.	
		DRAFT WHERE APPLICABLE MUST REMAIN WITHIN DIMENSIONS		SEE TABLE		SD-87792-005		4 OF 4	
				THIS DRAWING CONTAINS INFORMATION THAT IS PROPRIETARY TO MOLEX INCORPORATED AND SHOULD NOT BE USED WITHOUT WRITTEN PERMISSION					