

PLEASE CHECK WWW.MOLEX.COM FOR LATEST PART INFORMATION

Part Number: [0917773102](#)
Status: **Active**
Overview: [rast 5 connector system](#)
Description: 5.00mm (.197") Appli-Mate RAST 5 IDT Housing, Direct/Indirect, Female, 10A, 1 Circuit, Position Keys B

Documents:

3D Model	Product Specification PS-99020-0037 (PDF)
Drawing (PDF)	RoHS Certificate of Compliance (PDF)
Packaging Specification (PDF)	

Agency Certification

CSA	LR19980
UL	E29179

General

Product Family	IDT and Solder Connectors
Series	91777
Crimp Quality Equipment	Yes
Overview	rast 5 connector system
Product Name	RAST 5
Use With	RAST standard interface

Physical

Circuits (Loaded)	1
Circuits (maximum)	1
Color - Resin	Natural (White)
Durability (mating cycles max)	10
Flammability	94V-2
Gender	Female
Glow-Wire Compliant	Yes
Lock to Mating Part	Yes
Material - Metal	Phosphor Bronze
Material - Plating Mating	Silver
Material - Plating Termination	Silver
Material - Resin	Nylon
Number of Rows	1
Packaging Type	Tray
Panel Mount	No
Pitch - Mating Interface (in)	0.197 In
Pitch - Mating Interface (mm)	5.00 mm
Pitch - Term. Interface (in)	0.197 In
Pitch - Term. Interface (mm)	5.00 mm
Polarized to Mating Part	Yes
Stackable	No
Temperature Range - Operating	-40°C to +120°C
Termination Interface: Style	IDT or Pierce
Wire Size AWG	22, 24

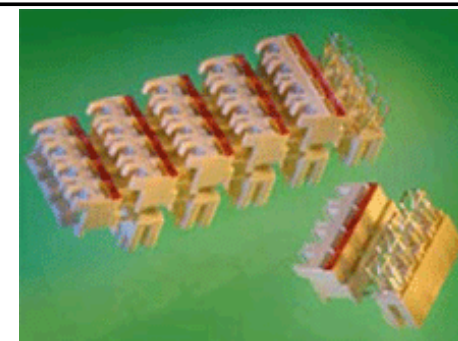
Electrical

Current - Maximum per Contact	10A
Voltage - Maximum	250V AC

Material Info

Reference - Drawing Numbers

Application Specification	AS-99033-0004
---------------------------	---------------



Series

image - Reference only

EU RoHS

ELV and RoHS Compliant

REACH SVHC

Not Reviewed

Halogen-Free

Status

Not Reviewed

Need more information on product environmental compliance?

Email productcompliance@molex.com
 For a multiple part number RoHS Certificate of Compliance, [click here](#)

Please visit the [Contact Us](#) section for any non-product compliance questions.

China RoHS



Search Parts in this Series

[91777Series](#)

Mates With

Appli-Mate RAST 5.0 Header [90858](#) , [90879](#)

Application Tooling | FAQ

Tooling specifications and manuals are found by selecting the products below. Crimp Height Specifications are then contained in the Application Tooling Specification document.

Global

Description	Product #
RAST 5.0 Semi-Automatic Terminator Machine for Appli-Mate™ Connector 6 and 10 AMP	0623006300

This document was generated on 05/28/2010

PLEASE CHECK WWW.MOLEX.COM FOR LATEST PART INFORMATION

10 9 8 7 6 5 4 3 2 1

F

E

D

C

B

A

F

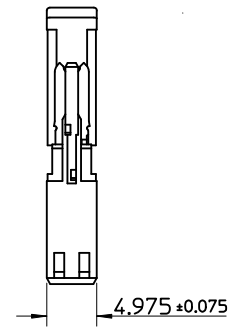
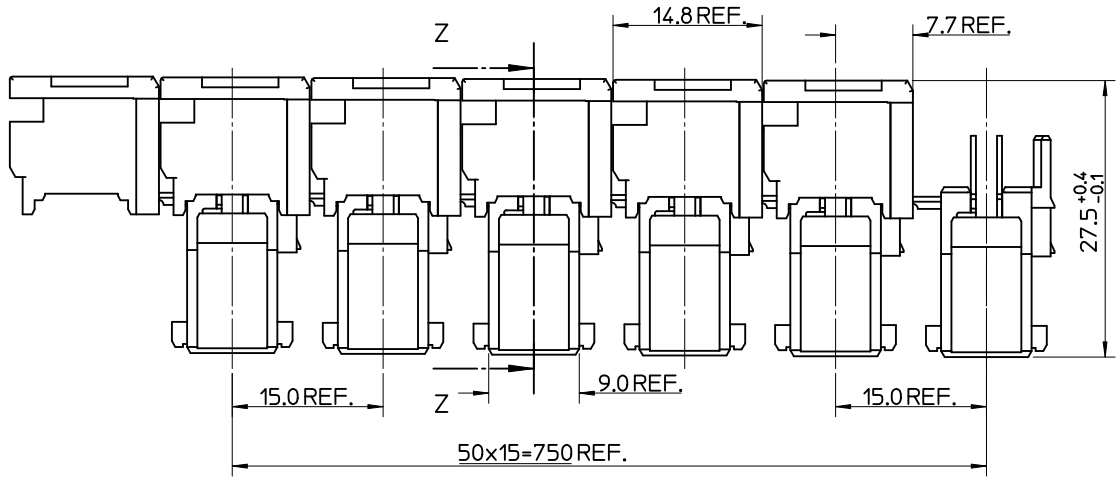
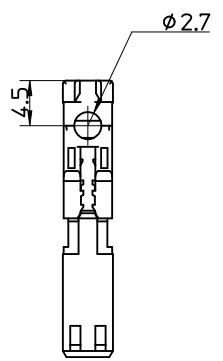
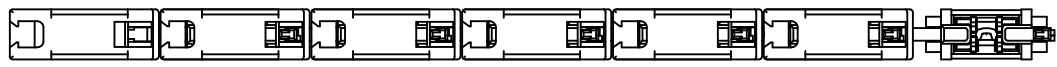
E

D

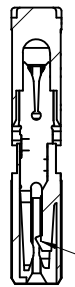
C

B

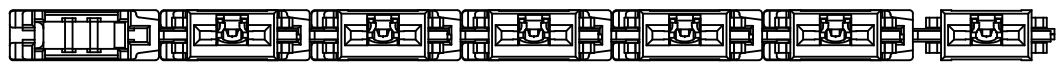
A



Z-Z



LOCKING TAB



NOTES:

1. MATERIALS:
 HOUSING: PA6 UL94 V-2
 TERMINAL: COPPER ALLOY, 0.5 REF THICK
 PLATING: OPTION 1: 5um MIN PURE Sn ALL OVER
 OPTION 2: 2um MIN SILVER IN CONTACT AREA
 0.05um MIN SILVER FLASH ALLOVER
2. PRODUCT CONFORMS TO SPECIFICATION PS-99020-0037
3. PACKAGING SPECIFICATION SEE SPEC PK-90833-001
4. REFER TO APPLICATION SPECIFICATION AS-99033-0004

changed plating spec EC NO: E2010-0213 DRWN: BRITTLE 2010/01/08 CHKD: T. TOURISH 2010/01/19 APPR: BMAGUIRE 2010/01/19	QUALITY SYMBOLS	GENERAL TOLERANCES (UNLESS SPECIFIED)	DIMENSION STYLE	SCALE	DESIGN UNITS	THIRD ANGLE PROJECTION
	▼=0 ▽=0	mm INCH 4 PLACES ± --- ± --- 3 PLACES ± --- ± --- 2 PLACES ± 0.05 ± --- 1 PLACE ± 0.10 ± --- ANGULAR ± 2 °	MM ONLY	2:1	METRIC	
	DESCRIPTION	DRAFT WHERE APPLICABLE MUST REMAIN WITHIN DIMENSIONS	DRAWN BY: GMC SWEEN CHECKED BY: BMAGUIRE APPROVED BY: BMAGUIRE DATE: 2004/10/12 DATE: 2005/01/07 DATE: 2005/01/07	TITLE		
	REV	SIZE	MOLEX INCORPORATED DOCUMENT NO. SD-91777-001 SHEET NO. 1 OF 2			

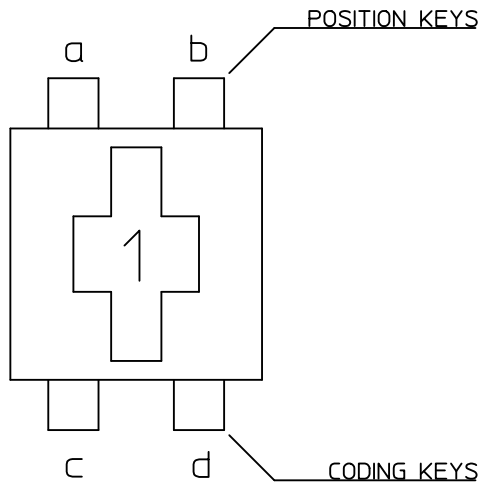
THIS DRAWING CONTAINS INFORMATION THAT IS PROPRIETARY TO MOLEX INCORPORATED AND SHOULD NOT BE USED WITHOUT WRITTEN PERMISSION

SEE SHEET 2

5MM APPLI-MATE 1CKT
10A FEMALE CONNECTOR

9 8 7 6 5 4 3 2 1

MOLEX PART NUMBER	TERMINAL (see note1 sheet1)	COLOUR	POSITION KEYS	CODING KEYS	CONFIGURATION	REF.
91777-0102	OPTION 1 (TIN)	NATURAL	b	c d		K02
91777-3102	OPTION 2 (SILVER)					
91777-0103	OPTION 1 (TIN)	NATURAL	NONE	NONE		K**
91777-3103	OPTION 2 (SILVER)					
91777-0104	OPTION 1 (TIN)	NATURAL	NONE	c		K11
91777-3104	OPTION 2 (SILVER)					
91777-0105	OPTION 1 (TIN)	NATURAL	a	c		K09
91777-3105	OPTION 2 (SILVER)					
91777-0106	OPTION 1 (TIN)	NATURAL	a, b	c, d		K00
91777-3106	OPTION 2 (SILVER)					
91777-0107	OPTION 1 (TIN)	BLACK	a, b	d		K01
91777-3107	OPTION 2 (SILVER)					



POSITION & CODING KEYS IDENTIFICATION

SEE SHEET 1 EC NO: E2010-0213 DRWN: BRUTTLE 2010/01/08 CHKD: T. TOURISH 2010/01/19 APPR: BMAGUIRE 2010/01/19	DESCRIPTION REV	QUALITY SYMBOLS	GENERAL TOLERANCES (UNLESS SPECIFIED)	DIMENSION STYLE	SCALE	DESIGN UNITS	THIRD ANGLE PROJECTION
		= 0 = 0	mm INCH 4 PLACES ± --- ± --- 3 PLACES ± --- ± --- 2 PLACES ± 0.05 ± --- 1 PLACE ± 0.10 ± --- ANGULAR ± 2 °	MM ONLY	2:1	METRIC	
		DRAWN BY: GMC SWEEN DATE: 2004/10/12 CHECKED BY: DATE: APPROVED BY: BMAGUIRE DATE: 2005/01/07 MATERIAL NO.	TITLE 5MM APPLI-MATE 1CKT 10A FEMALE CONNECTOR				
		DRAFT WHERE APPLICABLE MUST REMAIN WITHIN DIMENSIONS	SEE CHART	MOLEX INCORPORATED DOCUMENT NO. SD-91777-001 SHEET NO. 2 OF 2			