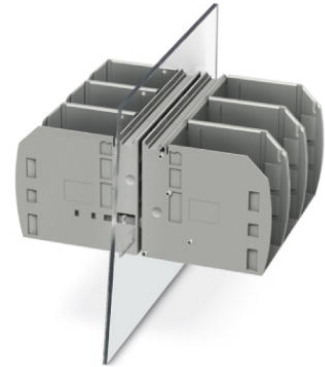


## RWO 10/S

Order No.: 3056161



<http://eshop.phoenixcontact.de/phoenix/treeViewClick.do?UID=3056161>

Feed-through terminal block, Connection method: Bolt connection,  
Load current : 309 A, Cross-section: 6 mm<sup>2</sup> - 150 mm<sup>2</sup>, Connection  
direction of the conductor to plug-in direction: 0 °, Width: 42.2 mm,  
Color: gray

### Commercial data

GTIN (EAN)	 4 046356 430876
Note	Made-to-order
sales group	A420
Pack	5 pcs.
Customs tariff	85369010
Catalog page information	Page 66 (NTK-2010)

### Product notes

WEEE/RoHS-compliant since:  
06/24/2008



[http://  
www.download.phoenixcontact.com](http://www.download.phoenixcontact.com)  
Please note that the data given  
here has been taken from the  
online catalog. For comprehensive  
information and data, please refer  
to the user documentation. The  
General Terms and Conditions of  
Use apply to Internet downloads.

### Technical data

#### General

Number of levels	1
Number of connections	2
Color	gray

Insulating material	PA
Inflammability class acc. to UL 94	V0

**Dimensions**

Width	42.2 mm
-------	---------

**Technical data**

Rated surge voltage	6 kV
Pollution degree	3
Surge voltage category	III
Insulating material group	I
Connection in acc. with standard	IEC 60947-7-1
Nominal current $I_N$	309 A
Nominal voltage $U_N$	1000 V

**Connection data**

Conductor cross section solid min.	6 mm <sup>2</sup>
Conductor cross section solid max.	150 mm <sup>2</sup>
Conductor cross section AWG/kcmil min.	10
Conductor cross section AWG/kcmil max	250 kcmil
Connection method	Bolt connection
Screw thread	M10
Tightening torque, min	10 Nm
Tightening torque max	20 Nm

**Accessories**

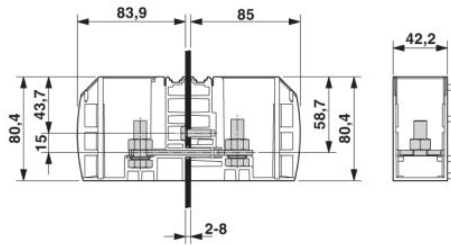
Item	Designation	Description
<b>General</b>		
3075197	RW 10-F	Flange cover
0820222	ZB 16,3:UNPRINTED	Terminal marking

**Marking**

0828295	TMT (EX9,5)R	Terminal marking with 9.5 mm strip height, continuous, without color print, for all terminals with ZB or ZBF groove, can be labeled using a thermal transfer printer, 1 roll = 50 m
---------	--------------	---

## Diagrams/Drawings

### Dimensioned drawing



**Address**

PHOENIX CONTACT Inc., USA  
586 Fulling Mill Road  
Middletown, PA 17057, USA  
Phone (800) 888-7388  
Fax (717) 944-1625  
<http://www.phoenixcon.com>



© 2011 Phoenix Contact  
Technical modifications reserved;