

PLEASE CHECK WWW.MOLEX.COM FOR LATEST PART INFORMATION

Part Number: [1719720110](#)
Status: **Active**
Overview: [SL Modular Connectors](#)
Description: 2.54mm Pitch SL Header, Single Row, Vertical, LCP, Shrouded, Through Hole, with Pegs, 0.38µm Selective Gold (Au) Plating, 10 Circuits

Documents:

[Drawing \(PDF\)](#) [Packaging Specification 1719710000-PK-000 \(PDF\)](#)
[Product Specification 1719710000-PS-000 \(PDF\)](#) [RoHS Certificate of Compliance \(PDF\)](#)
[Product Specification PS-70400-001 \(PDF\)](#)

General

Product Family	PCB Headers
Series	171972
Application	Signal, Wire-to-Board
Overview	SL Modular Connectors
Product Name	SL
UPC	889056787642

Physical

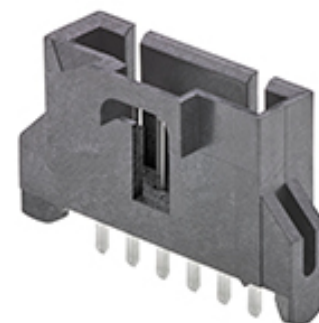
Breakaway	No
Circuits (Loaded)	10
Circuits (maximum)	10
Color - Resin	Black
First Mate / Last Break	No
Glow-Wire Capable	No
Guide to Mating Part	Yes
Keying to Mating Part	None
Lock to Mating Part	Yes
Material - Metal	Brass
Material - Plating Mating	Gold
Material - Plating Termination	Matte Tin
Material - Resin	Liquid Crystal Polymer
Net Weight	1.985/g
Number of Rows	1
Orientation	Vertical
PC Tail Length	3.30mm
PCB Locator	Yes
PCB Retention	Yes
PCB Thickness - Recommended	1.57mm
Packaging Type	Tube
Pitch - Mating Interface	2.54mm
Pitch - Termination Interface	2.54mm
Plating min - Mating	0.380µm
Plating min - Termination	2.000µm
Polarized to Mating Part	Yes
Polarized to PCB	Yes
Shrouded	Fully
Temperature Range - Operating	-40° to +105°C
Termination Interface: Style	Through Hole

Electrical

Current - Maximum per Contact	3.0A
Voltage - Maximum	250V

Material Info

Reference - Drawing Numbers



Series image - Reference only

EU ELV

Not Relevant

EU RoHS

Compliant

REACH SVHC

Not Contained Per -
ED/61/2018 (27 June
2018)

Halogen-Free

Status

Low-Halogen

Need more information on product environmental compliance?

Email productcompliance@molex.com
Please visit the [Contact Us](#) section for any non-product compliance questions.

China ROHS	Green Image
ELV	Not Relevant
RoHS Phthalates	Not Contained

Search Parts in this Series

[171972 Series](#)

Mates With

SL Insulation Displacement Connector Assembly [70400](#) (Version G)
SL Receptacle [70430](#) (Version G), [70066](#) (Version G and N)

Packaging Specification
Product Specification
Sales Drawing

1719710000-PK-000
1719710000-PS-000, PS-70400-001
1719720000-SD-000

This document was generated on 08/14/2018

PLEASE CHECK WWW.MOLEX.COM FOR LATEST PART INFORMATION