

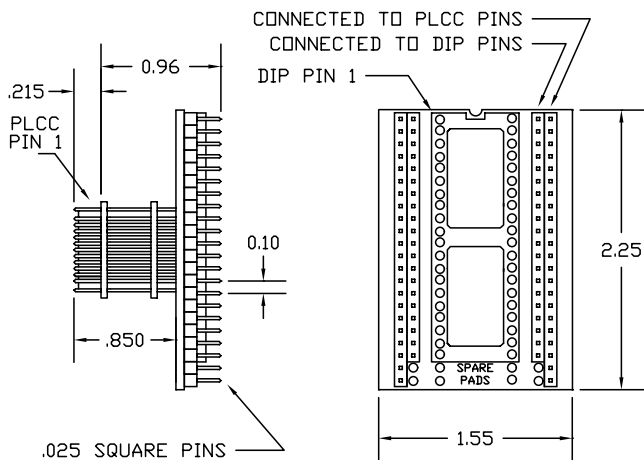
PA40-44-X-Dx-PP Data Sheet

40 pin DIP socket/44 pin PLCC plug

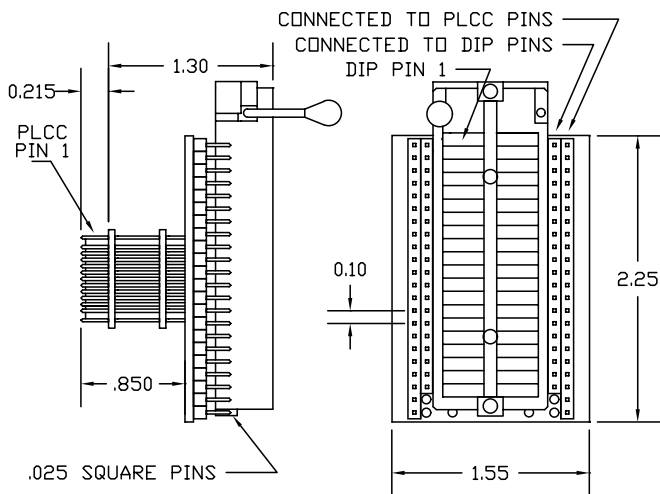
Supported Device/Footprints

The PA40-44-Dx-PP adapters accepts 40 pin DIP devices and plugs into 44 pin PLCC production sockets. They will be wired by the user to meet the users specifications.

Adapter Dimensions



PA40-44-X-DP-PP



PA40-44-X-DZ-PP

Adapter Construction

The adapter is made up of 2 sub-assemblies. They assemble via connectors making the adapter modular. This way the sub-assemblies can be replaced easily.

The following chart lists the adapters described by this datasheet and their subassemblies.

Adapter	Test Socket	Board
PA40-44-X-DZ-PP	40-ADZ *	PA40-44-X
PA40-44-X-DP-PP	none *	PA40-44-X

* The board always has a 40 pin DIP production socket. The optional test socket plugs into the production socket.

Test Socket

LSC #	Style	Mfgr/Pn
40ADZ	DIP ZIF	Aries 40-6554-11

When disassembling the adapter take care not to bend the pins. When reassembling the adapter note the pin 1 indicators to align the parts correctly.

Adapter Wiring

The adapter is custom configurable by adding wires or jumpers between two set of wire-wrap posts. The outer set connects to the PLCC plug. The inner set connect to the DIP socket.

The following chart could be filled out by the user to document the adapters wiring.

DIP	SIGNAL	PLUG	PLUG	SIGNAL	DIP
		1	44		
		2	43		
		3	42		
		4	41		
		5	40		
		6	39		
		7	38		
		8	37		
		9	36		
		10	35		
		11	34		
		12	33		
		13	32		
		14	31		
		15	30		
		16	29		
		17	28		
		18	27		
		19	26		
		20	25		
		21	24		
		22	23		