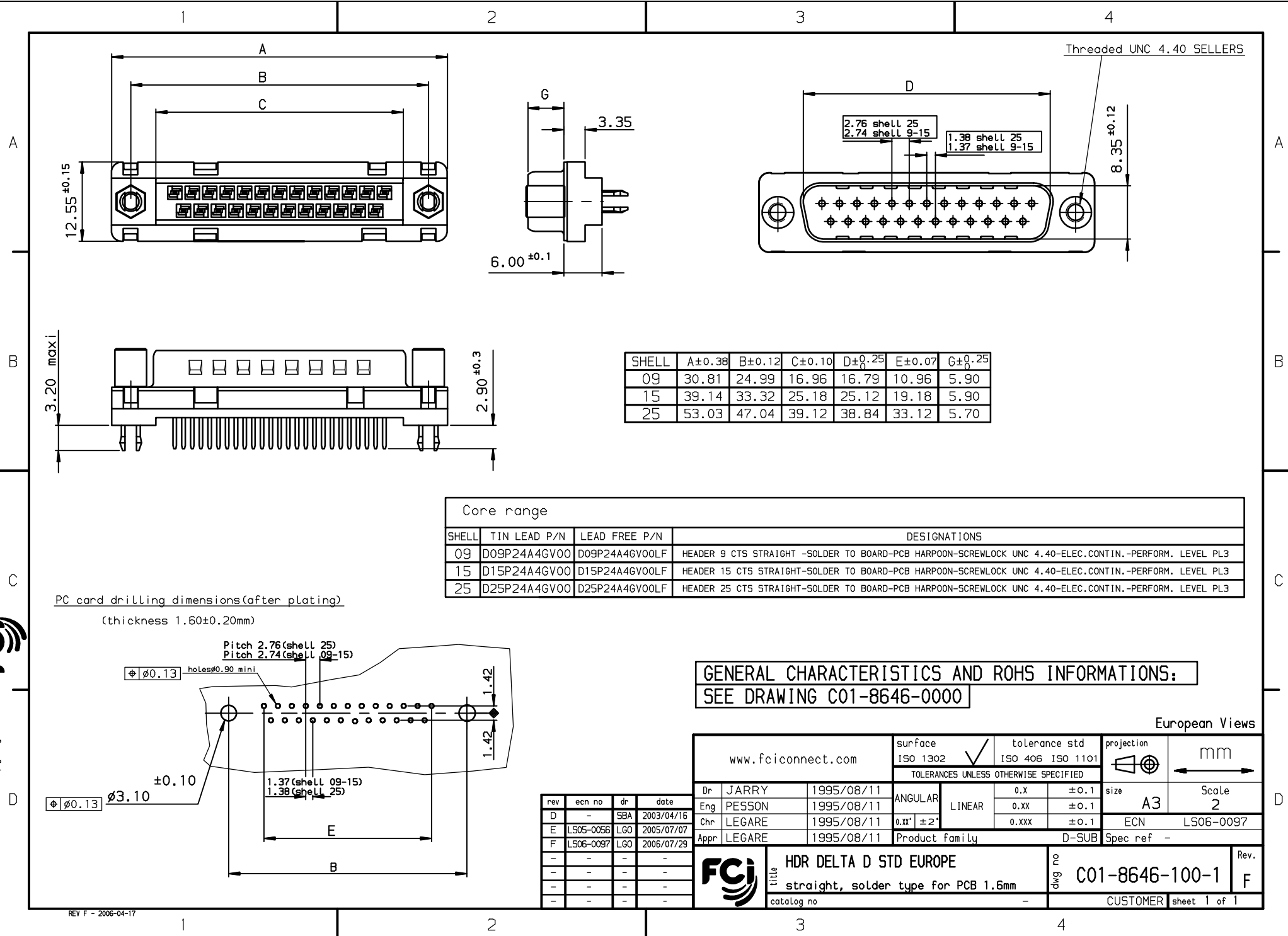


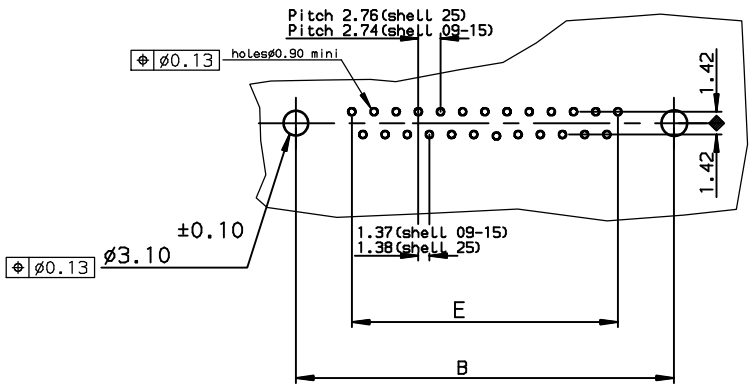
Copyright FCI.



| SHELL | A±0.38 | B±0.12 | C±0.10 | D±0.25 | E±0.07 | G±0.25 |
|-------|--------|--------|--------|--------|--------|--------|
| 09    | 30.81  | 24.99  | 16.96  | 16.79  | 10.96  | 5.90   |
| 15    | 39.14  | 33.32  | 25.18  | 25.12  | 19.18  | 5.90   |
| 25    | 53.03  | 47.04  | 39.12  | 38.84  | 33.12  | 5.70   |

| Core range |              |                |   |
|------------|--------------|----------------|---|
| SHELL      | TIN LEAD P/N | LEAD FREE P/N  | DESIGNATIONS  |
| 09         | D09P24A4GV00 | D09P24A4GV00LF | HEADER 9 CTS STRAIGHT -SOLDER TO BOARD-PCB HARPOON-SCREWLOCK UNC 4.40-ELEC.CONTIN.-PERFORM. LEVEL PL3 |
| 15         | D15P24A4GV00 | D15P24A4GV00LF | HEADER 15 CTS STRAIGHT-SOLDER TO BOARD-PCB HARPOON-SCREWLOCK UNC 4.40-ELEC.CONTIN.-PERFORM. LEVEL PL3 |
| 25         | D25P24A4GV00 | D25P24A4GV00LF | HEADER 25 CTS STRAIGHT-SOLDER TO BOARD-PCB HARPOON-SCREWLOCK UNC 4.40-ELEC.CONTIN.-PERFORM. LEVEL PL3 |

PC card drilling dimensions(after plating)  
(thickness 1.60±0.20mm)



**GENERAL CHARACTERISTICS AND ROHS INFORMATIONS:**  
SEE DRAWING C01-8646-0000

European Views

|                                       |        |                       |                                   |                  |
|---------------------------------------|--------|-----------------------|-----------------------------------|------------------|
| www.fciconnect.com                    |        | surface<br>ISO 1302 ✓ | tolerance std<br>ISO 406 ISO 1101 | projection<br>mm |
| TOLERANCES UNLESS OTHERWISE SPECIFIED |        |                       |                                   |                  |
| Dr                                    | JARRY  | 1995/08/11            | ANGULAR                           | size A3          |
| Eng                                   | PESSON | 1995/08/11            | LINEAR                            | Scale 2          |
| Chr                                   | LEGARE | 1995/08/11            | 0.xx' ±2'                         | ECN L506-0097    |
| Appr                                  | LEGARE | 1995/08/11            | Product family                    | D-SUB Spec ref - |
| title<br>HDR DELTA D STD EUROPE       |        |                       | Rev. 02                           | C01-8646-100-1   |
| catalog no                            |        |                       | CUSTOMER sheet 1 of 1             |                  |

| rev | ecn no    | dr  | date       |
|-----|-----------|-----|------------|
| D   | -         | SBA | 2003/04/16 |
| E   | L505-0056 | LGO | 2005/07/07 |
| F   | L506-0097 | LGO | 2006/07/29 |
| -   | -         | -   | -          |
| -   | -         | -   | -          |
| -   | -         | -   | -          |