

## Han K6/6-F-c

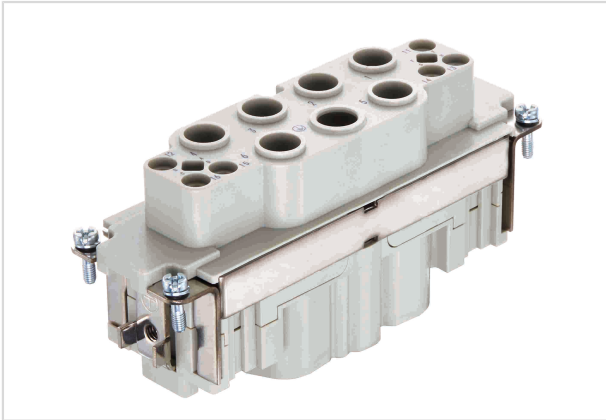


Image is for illustration purposes only. Please refer to product description.

Part number	09 38 012 3102
Specification	Han K6/6-F-c
HARTING eCatalogue	<a href="https://b2b.harting.com/09380123102">https://b2b.harting.com/09380123102</a>

### Identification

Category	Inserts
Series	Han-Com <sup>®</sup>
Identification	Han <sup>®</sup> K 6/6

### Version

Termination method	Crimp termination
Gender	Female
Size	24 B
Number of contacts	6
further contacts	+ 6 additional signal contacts
PE contact	Yes
Details	Please order crimp contacts separately. Please order coding pins separately.

### Technical characteristics

Conductor cross-section	10 ... 25 mm <sup>2</sup> 0.14 ... 2.5 mm <sup>2</sup> Signal
Wire outer diameter	≤12.8 mm
Rated current	100 A
Rated voltage	690 V
Rated impulse voltage	8 kV
Pollution degree	3
Rated current (signal)	16 A



Pushing Performance

## Technical characteristics

Rated voltage (signal)	400 V
Rated impulse voltage (signal)	6 kV
Pollution degree (signal)	3
Insulation resistance	$>10^{10} \Omega$
Limiting temperature	-40 ... +125 °C
Mating cycles	$\geq 500$

## Material properties

Material (insert)	Polycarbonate (PC)
Colour (insert)	RAL 7032 (pebble grey)
Material flammability class acc. to UL 94	V-0
RoHS	compliant
ELV status	compliant
China RoHS	e
REACH Annex XVII substances	No
REACH ANNEX XIV substances	No
REACH SVHC substances	No
California Proposition 65 substances	Yes
California Proposition 65 substances	Nickel Lead

## Specifications and approvals

Specifications	EN 60664-1 IEC 61984
Approvals	DNV GL

## Commercial data

Packaging size	1
Net weight	118.4 g
Country of origin	Germany
European customs tariff number	85389099
eCl@ss	27440205 Contact insert for industrial connectors