

FPM-3171G

17" SXGA Industrial Monitor with Resistive Touchscreen, Direct-VGA and DVI Ports



Features

- 17" SXGA TFT LCD with resolution up to 1280 x 1024
- Robust design with stainless steel chassis and aluminum front panel
- Anti-reflective screen with tempered glass
- Supports stainless steel front panel (optional)
- OSD control pad on front panel
- Supports industrial 24-48 V_{DC} power input (optional)
- Supports transreflective LCD technology (optional)
- Supports panel, wall, desktop, rack or VESA arm mounting
- Front panel is NEMA4/IP65 compliant

Introduction

FPM-3171G is a 17" color TFT LCD flat panel monitor specifically designed for industrial applications. With a viewing size as large as 17", it presents an ample display area as well as vivid and sharp images for your HMI. It features direct VGA signal transmission. You can thus upgrade the displays without making changes to the existing system. The onscreen display function also makes it easy to adjust the images on the screen. The whole chassis is designed in stainless steel and the front panel is made of aluminum with front panel NEMA4/IP65 compliance.

Specifications

General

- **Button Controls** OSD (Onscreen Display) control pad on front panel
- **Certification** BSMI, CCC, CE, FCC
- **Dimension (W x H x D)** 482 x 354 x 68 mm (18.9" x 13.9" x 2.7")
- **Enclosure** Front panel: Aluminum with coating
Rear cover: Stainless steel chassis
- **Mounting** Panel, wall, desktop, VESA arm & 19" rackmount
- **Power Input** External 50 W power adapter, with AC 100 V ~ 240 V input and DC +12 V @ 4.16 A output
- **Video Port** VGA & DVI-D port
- **Weight (Net)** 9.25 kg (20.39 lbs)

LCD Display

- **Display Type** SXGA TFT LCD
- **Display Size** 17"
- **Max. Resolution** 1280 x 1024
- **Max. Color** 16.2 M
- **Viewing Angle (H/V°)** 140/130
- **Luminance (cd/m²)** 300
- **Backlight Life (hrs)** 40,000
- **Contrast Ratio** 700 : 1

Touchscreen (Optional)

- **Sensor** ELO
- **Driver** ELTOUCH
- **Type** 5-wire Resistive
- **Interface** RS-232 or USB
- **Lifespan** 35 million touches at a single point
- **Light Transmission** 80% ±5
- **OS Support** DOS, Windows® 2000/XP/CE/Vista, Linux
- **Power Consumption** +5 V @ 100 mA
- **Touch Resolution** Linearity

Environment

- **Operation Temperature** 0 ~ 50° C (32 ~ 122° F)
- **Storage Temperature** -20 ~ 60° C (-4 ~ 140° F)
- **Humidity (Storage)** 10 ~ 90% non-condensing
- **Waterproof** Front panel is NEMA4/IP65 compliant
- **Vibration** 5 ~ 500 Hz, 1 Grms (Operating, Random)

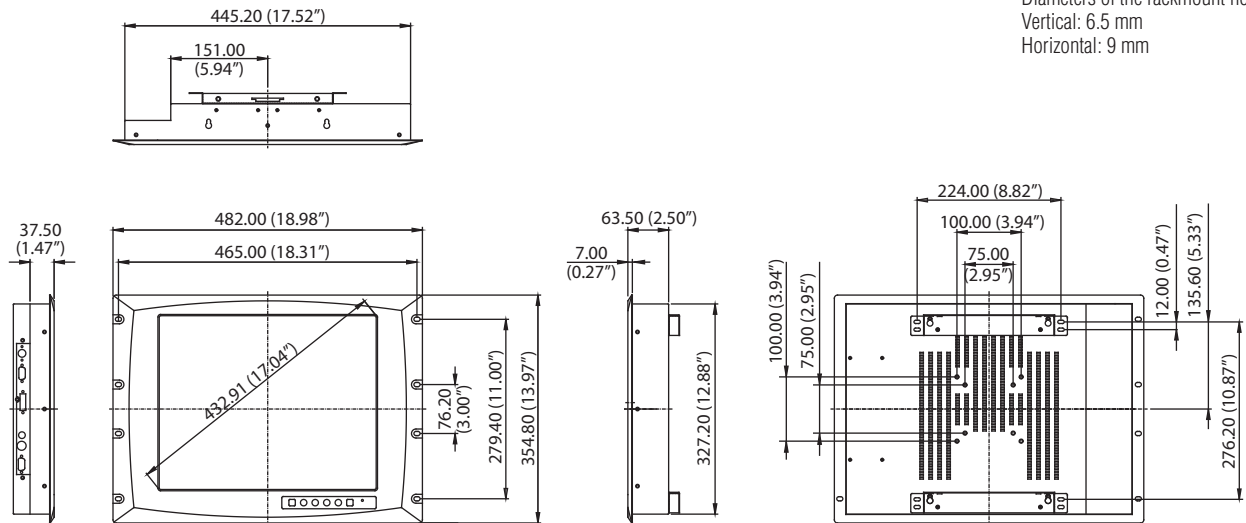
Ordering Information

- **FPM-3171G-XCE** 17" SXGA Ind. Monitor
- **FPM-3171G-RCE** 17" SXGA Ind Monitor w/Resistive TS (RS-232 & USB)
- **PWR-246E** DC to DC Converter w/24-48 V_{DC} Power Input

Dimensions

Unit: mm

Diameters of the rackmount holes:
Vertical: 6.5 mm
Horizontal: 9 mm

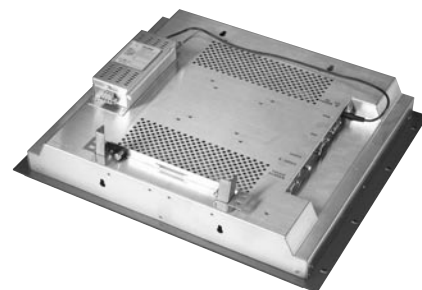


Panel Cut-out Dimensions: 451 x 333 mm (17.75" x 13.38")

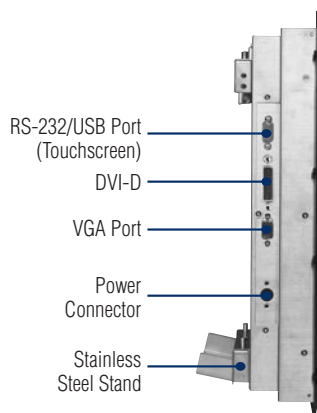
Accessories

- 1702002600 Power Cable US Plug 1.8 M
- 1702002605 Power Cable EU Plug 1.8 M
- 1702031801 Power Cable UK Plug 1.8 M
- 1702031836 Power Cable China/Australia Plug 1.8 M

Mounting with DC Source



I/O View



Rear View

