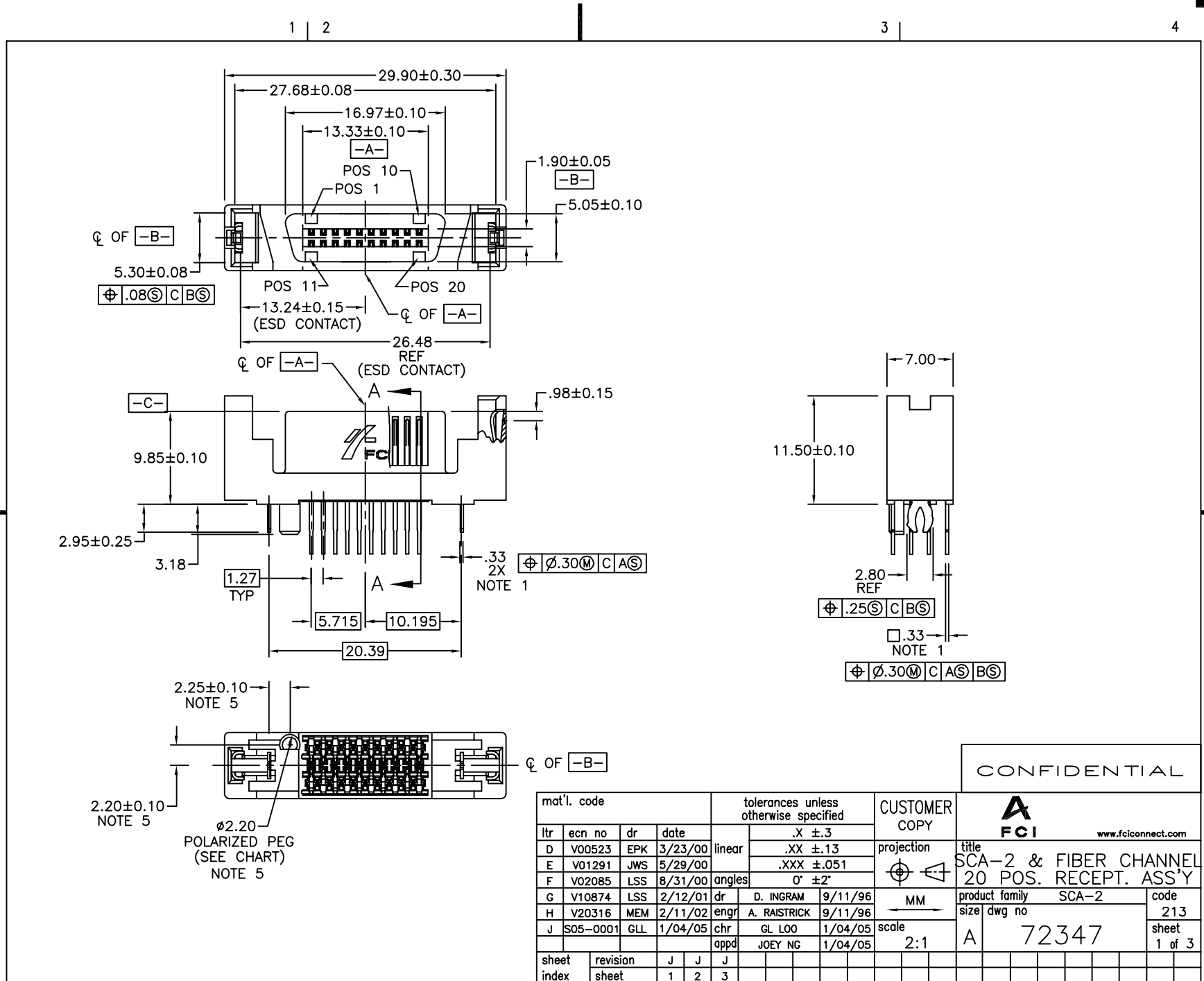


Tous droits strictement reserves. Reproduction ou communication a des tiers interdite sous quelque forme que ce soit sans autorisation ecrite du propriétaire. Propriete de c FCI. Droits de reproduction FCI.



All rights strictly reserved. Reproduction or issue to third parties in any form whatever is not permitted without written authority from the proprietor. Property of FCI. Copyright FCI.



CONFIDENTIAL

| | | | | | | | | | | | |
|-------------|----------------|-----|---------|---------------------------------------|--------------|---------|-------|---------------|-----------------------|------------------------|--|
| mat'l. code | | | | tolerances unless otherwise specified | | | | CUSTOMER COPY | | www.fciconnect.com | |
| ltr | ecn no | dr | date | linear | .X ±.3 | | | projection | title | | |
| D | V00523 | EPK | 3/23/00 | | .XX ±.13 | | | | SCA-2 & FIBER CHANNEL | | |
| E | V01291 | JWS | 5/29/00 | angles | .XXX ±.051 | | | MM | 20 POS. RECEPT. ASS'Y | | |
| F | V02085 | LSS | 8/31/00 | | 0° ±2° | | | | product family SCA-2 | | |
| G | V10874 | LSS | 2/12/01 | dr | D. INGRAM | 9/11/96 | scale | size | | code | |
| H | V20316 | MEM | 2/11/02 | enfr | A. RAISTRICK | 9/11/96 | | A | | 213 | |
| J | S05-0001 | GLL | 1/04/05 | chr | GL L00 | 1/04/05 | 2:1 | 72347 | | sheet | |
| | | | | appd | JOEY NG | 1/04/05 | | A | | 1 of 3 | |
| sheet index | revision sheet | J | J | J | | | | | | | |
| | | 1 | 2 | 3 | | | | | | | |

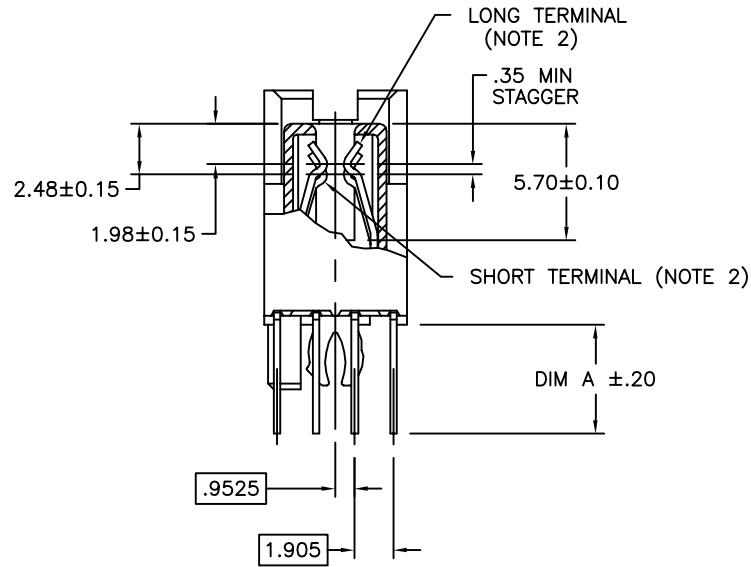
cage code 22526

ACAD

Tous droits strictement reserves. Reproduction ou communication a des tiers interdite sous quelque forme que ce soit sans autorisation ecrite du proprietaire. Propriete de c FCI. Droits de reproduction FCI.



All rights strictly reserved. Reproduction or issue to third parties in any form whatever is not permitted without written authority from the proprietor. Property of FCI. Copyright FCI.



SECTION A-A

CONFIDENTIAL

| | | | | | | | |
|-------------|----------------|---------------------------------------|--------------|---------------|------------|------------------------|---|
| mat'l. code | | tolerances unless otherwise specified | | CUSTOMER COPY | | www.fciconnect.com | |
| ltr | ecn no | dr | date | linear | .X ±.3 | projection | |
| J | | | | | .XX ±.13 | | |
| | | | | | .XXX ±.051 | | |
| | | | | angles | 0° ±2° | MM | title SCA-2 & FIBER CHANNEL 20 POS. RECEPT. ASS'Y product family SCA-2 size dwg no A 72347 code 213 sheet 2 of 3 |
| | | dr | D. INGRAM | 9/11/96 | | | |
| | | enfr | A. RAISTRICK | 9/11/96 | | | |
| | | chr | GL L00 | 1/04/05 | | | |
| | | appd | JOEY NG | 1/04/05 | scale | 2:1 | |
| sheet index | revision sheet | | | | | | |

cage code 22526

ACAD

PDM: Rev:J

STATUS: Released

Printed: May 26, 2010

Tous droits strictement reserves. Reproduction ou communication a des tiers interdite sous quelque forme que ce soit sans autorisation écrite du propriétaire. Propriete de c FCI. Droits de reproduction FCI.

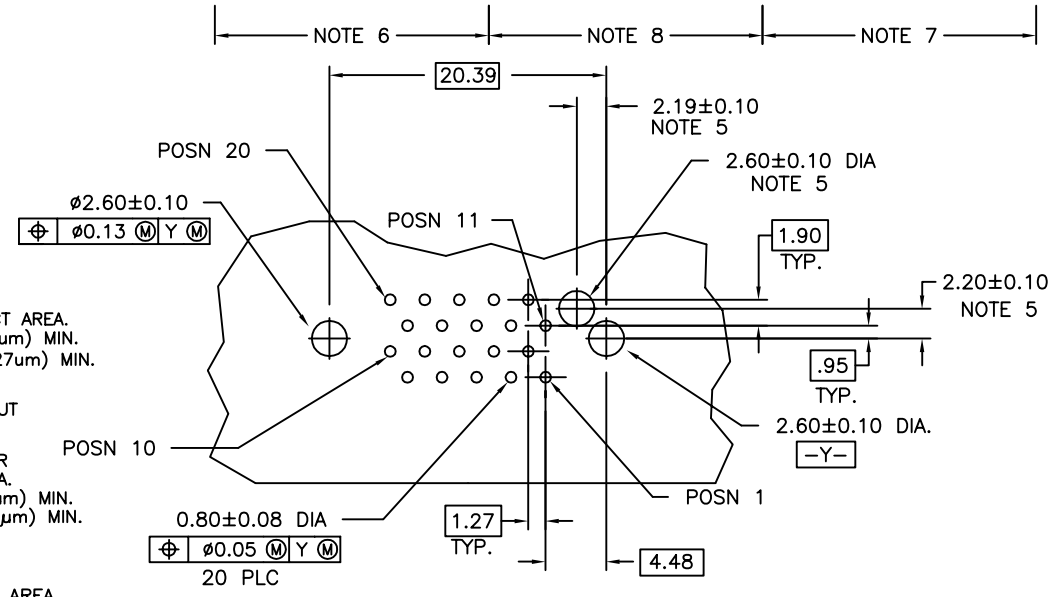
FCI

All rights strictly reserved. Reproduction or issue to third parties in any form whatever is not permitted without written authority from the proprietor. Property of FCI. Copyright FCI.

| PRODUCT NUMBER | "A" DIM | POLARIZATION PEG | PLATING | RECOMMENDED P.C. BOARD THICKNESS | PRODUCT NUMBER | PLATING | PRODUCT NUMBER | PLATING | PRODUCT NUMBER | PLATING |
|----------------|---------|------------------|---------|----------------------------------|----------------|---------|----------------|---------|----------------|---------|
| 72347-001 | 2.79 | YES | NOTE ④ | 1.57mm (0.062") | 72347-101 | NOTE ⑥ | 72347-001LF | NOTE ⑧ | 72347-101LF | NOTE ⑦ |
| 72347-002 | 2.79 | NO | | | 72347-102 | | 72347-002LF | | 72347-102LF | |
| 72347-003 | 3.18 | YES | | 72347-103 | 72347-003LF | | 72347-103LF | | | |
| 72347-004 | 3.18 | NO | | 72347-104 | 72347-004LF | | 72347-104LF | | | |
| 72347-005 | 4.06 | YES | | 72347-105 | 72347-005LF | | 72347-105LF | | | |
| 72347-006 | 4.06 | NO | | 72347-106 | 72347-006LF | | 72347-106LF | | | |

NOTES :

- ① TRUE POSITION NOTES APPLY AT TERMINAL TIP.
- ② CONTACTS IN POSITIONS 1 THRU 15 & 16 ARE SHORT TERMINALS. CONTACTS IN POSITIONS 11, 12, 13, 14, AND 17, 18, 19, 20 ARE LONG TERMINALS.
3. RAW MATERIALS:
HOUSING: HTN, UL94V-0, COLOR: BLACK
CONTACTS: PHOSPHOR-BRONZE
- ④ CONTACT PLATING: 30u" (0.76um) MIN. GXT PLATING OVER 50u" (1.27um) NICKLE MIN. UNDERPLATE IN CONTACT AREA. 100u" (2.54um) MIN. TIN-LEAD PLATING OVER 50u" (1.27um) MIN. NICKLE UNDERPLATE IN P.C. BOARD LEG AREA. 50u" (1.27um) MIN. NICKLE UNDERPLATE OVER REMAINING AREA.
- ⑤ DIMENSIONS DO NOT APPLY TO CONNECTOR STYLES WITHOUT POLARIZATION PEG. (SEE CHART)
- ⑥ CONTACT PLATING: 30u" (0.76um) MIN. GOLD PLATING OVER 50u" (1.27um) NICKEL MIN. UNDERPLATE IN CONTACT AREA. 100u" (2.54um) MIN TIN-LEAD PLATING OVER 50u" (1.27um) MIN. NICKEL UNDERPLATE IN P.C. BOARD LEG AREA. 50u" (1.27um) MIN. NICKEL UNDERPLATE OVER REMAINING AREA.
- ⑦ CONTACT PLATING: 30u" (0.76um) GOLD PLATING OVER 50u" (1.27um) NICKLE UNDERPLATE IN CONTACT AREA. 100u" (2.54um) - 200u"(5.08um) TIN PLATING OVER 50u" (1.27um) -100u" (2.54um) NICKEL UNDERPLATE IN P.C. BOARD LEG AREA. 50u" (1.27um) NICKEL UNDERPLATE OVER REMAINING AREA.
- ⑧ CONTACT PLATING: 30u" (0.76um) GXT PLATING OVER 50u" (1.27um) NICKLE UNDERPLATE IN CONTACT AREA. 100u" (2.54um) - 200u"(5.08um) TIN PLATING OVER 50u" (1.27um) -100u" (2.54um) NICKEL UNDERPLATE IN P.C. BOARD LEG AREA. 50u" (1.27um) NICKEL UNDERPLATE OVER REMAINING AREA.
- ⑨ THE HOUSING WILL WITHSTAND EXPOSURE TO 260°C PEAK TEMPERATURE FOR 10 SECONDS IN A WAVE SOLDER APPLICATION WITH A 1.57MM THICK CIRCUIT BOARD.
- ⑩ THIS PRODUCT MEETS EUROPEAN UNION DIRECTIVES AND OTHER COUNTRY REGULATIONS AS DESCRIBED IN GS-22-008.



RECOMMENDED PC BOARD MOUNTING DIMENSIONS COMPONENT SIDE

CONFIDENTIAL

| | | | | | | | | | | | |
|-------------|----------------|----|------|---------------------------------------|------------|------------|----------------|---------------|-----------------------|------------------------|--|
| mat'l. code | | | | tolerances unless otherwise specified | | | | CUSTOMER COPY | | www.fciconnect.com | |
| ltr | ecn no | dr | date | linear | .X ±.3 | projection | | | title | | |
| J | | | | angles | .XX ±.13 | MM | | | SCA-2& FIBER CHANNEL | | |
| | | | | dr | .XXX ±.051 | 213 | product family | | 20 POS. RECEPT. ASS'Y | | |
| | | | | engr | 0° ±2° | code | SCA-2 | | 213 | | |
| | | | | chr | 0' ±2" | size | dwg no | | 213 | | |
| | | | | appd | 2:1 | sheet | A | | 72347 | | |
| sheet index | revision sheet | | | | | 3 of 3 | | | | | |