

High Pass Filter

50Ω 5500 to 10000 MHz

HFCN-5050+



CASE STYLE: FV1206-1

Maximum Ratings

Operating Temperature	-55°C to 100°C
Storage Temperature	-55°C to 100°C
RF Power Input*	7W max. at 25°C

*Passband rating, derate linearly to 3W at 100°C ambient. Permanent damage may occur if any of these limits are exceeded.

Pin Connections

RF IN	1
RF OUT	3
GROUND	2,4,5,6

Features

- Low cost
- Small size
- 5 sections
- Temperature stable
- Excellent power handling, 7W
- Hermetically sealed
- LTCC construction
- Protected by US Patent 7,760,485

Applications

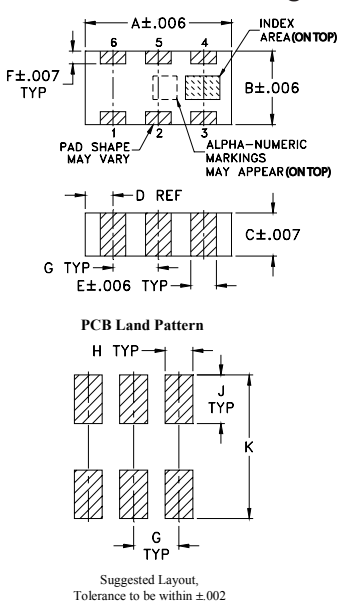
- Sub-harmonic rejection
- Transmitters / receivers

+RoHS Compliant

The +Suffix identifies RoHS Compliance. See our web site for RoHS Compliance methodologies and qualifications

Available Tape and Reel at no extra cost	
Reel Size	Devices/Reel
7"	20, 50, 100, 200, 500, 1000, 3000

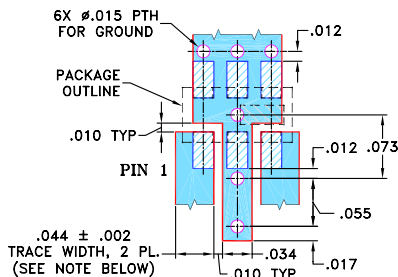
Outline Drawing



Outline Dimensions (inch/mm)

A	B	C	D	E	F
.126	.063	.035	.024	.022	.011
3.20	1.60	0.89	0.61	0.56	0.28
G	H	J	K		wt
.039	.024	.042	.123		grams
0.99	0.61	1.07	3.12		.020

Demo Board MCL P/N: TB-285 Suggested PCB Layout (PL-158)



- DENOTES PCB COPPER LAYOUT
- DENOTES COPPER LAND PATTERN FREE OF SOLDERMASK

Notes

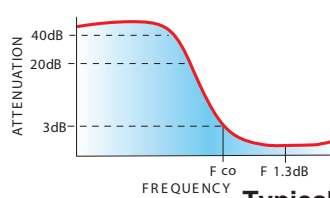
- Performance and quality attributes and conditions not expressly stated in this specification document are intended to be excluded and do not form a part of this specification document.
- Electrical specifications and performance data contained in this specification document are based on Mini-Circuit's applicable established test performance criteria and measurement instructions.
- The parts covered by this specification document are subject to Mini-Circuits standard limited warranty and terms and conditions (collectively, "Standard Terms"); Purchasers of this part are entitled to the rights and benefits contained therein. For a full statement of the Standard Terms and the exclusive rights and remedies thereunder, please visit Mini-Circuits' website at www.minicircuits.com/MCLStore/terms.jsp

Electrical Specifications^(1,2) at 25°C

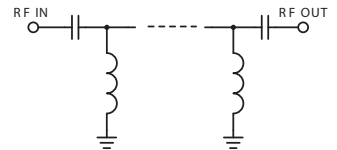
STOPBAND (MHz)	f _{co} , MHz Nom.	PASSBAND (MHz)	VSWR Typ.	POWER INPUT (W)	NO. OF SECTIONS
(Loss > 30dB) Typ.	(Loss > 20dB) Min.	(Loss > 3 dB) Typ.	Frequency (MHz) 1.5:1	Max.	
3600	4200	5050	Stopband		5
		5650-9700	5200-10000		

- (1) In Application where DC voltage is present at either input or output ports, coupling capacitors are required.
- (2) Measured on Mini-Circuits Characterization Test Board TB-285.

typical frequency response



electrical schematic



Typical Performance Data at 25°C

Frequency (MHz)	Insertion Loss (dB)	VSWR (:1)
50	61.01	868.59
1000	35.93	347.44
3600	32.03	48.26
4200	31.40	32.79
4700	13.75	14.38
4800	9.47	9.38
4950	4.60	4.01
5050	2.70	2.35
5200	1.55	1.40
5500	1.29	1.51
5650	1.27	1.55
9700	0.65	1.16
10000	0.72	1.34
10700	1.24	1.94
12000	3.06	3.42
14000	3.02	3.21
15000	7.56	3.00

