

LOW CAPACITANCE AND HIGH SURGE TVS DIODE ARRAY

Features

- 495 Watts Peak Pulse Power per Line ($t_p=8/20\mu s$)
- Protects Four Lines
- Low Clamping Voltage
- Working Voltages : 5.0V
- Low Leakage Current

Applications

- 10/100/1000 Ethernet Interface
- Microprocessor based equipment
- Personal Digital Assistants (PDA's)
- Notebooks, Desktops, and Servers
- ISDN S/T Interface
- WAN/LAN Equipment
- USB Interface

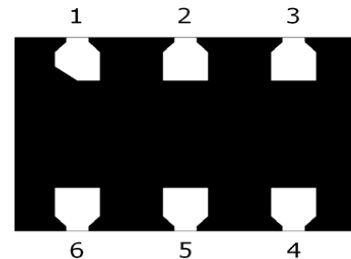
Mechanical Characteristics

- DFN3020P6 Package
- Molding Compound Flammability Rating : UL 94V-O
- Weight 12 Milligrams (Approximate)
- Quantity Per Reel : 3,000pcs
- Reel Size : 7 inch
- Lead Finish : Lead Free

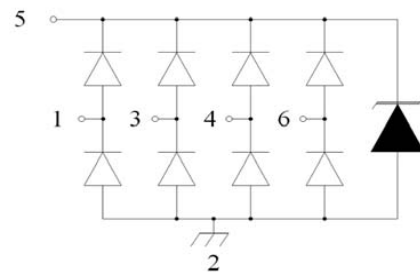
Absolute Maximum Ratings ($T_{amb}=25^{\circ}C$ unless otherwise specified)

Parameter	Symbol	Value	Unit
Peak Pulse Power (8/20 μs)	P _{pp}	600	W
ESD per IEC 61000-4-2 (Air)	V _{ESD}	± 25	Kv
ESD per IEC 61000-4-2 (Contact)		± 15	
Operating Temperature Range	T _J	-55 to +125	$^{\circ}C$
Storage Temperature Range	T _{STJ}	-55 to +150	$^{\circ}C$

Dimensions DFN3020P6



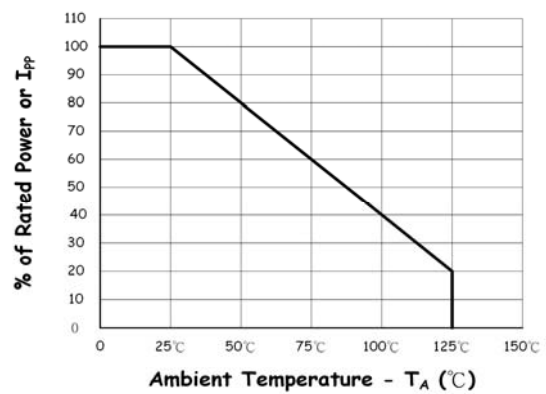
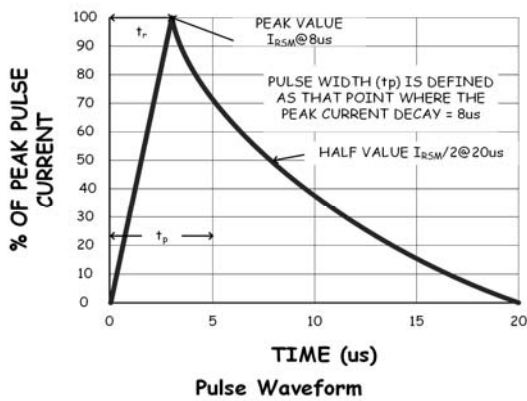
Pin Configuration



Electrical Characteristics(TA=25°C unless otherwise specified)

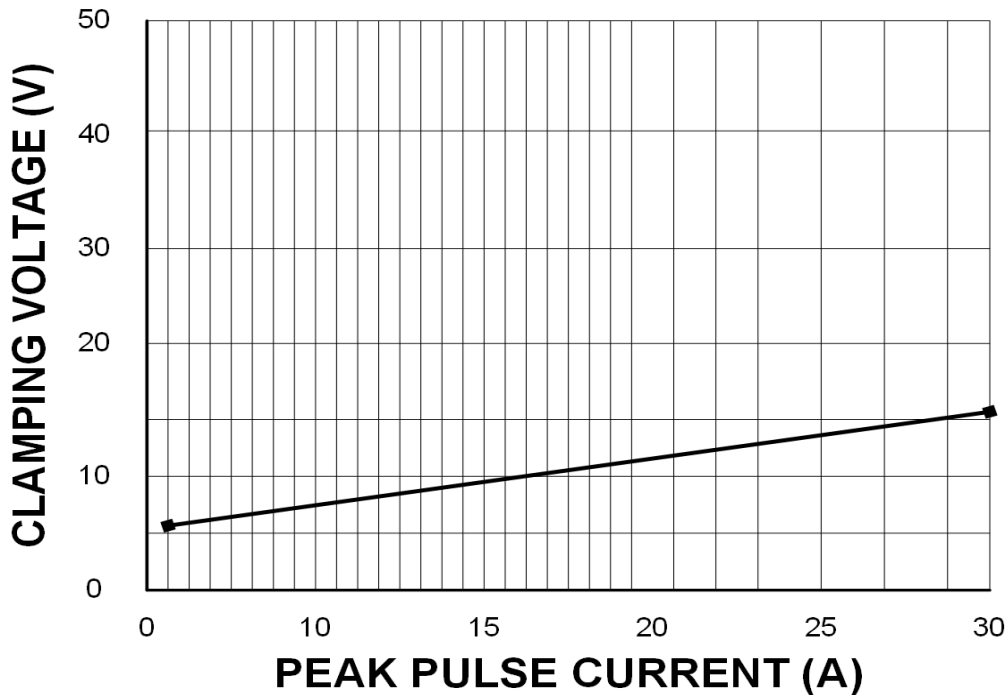
Part Number	Device Marking	V _{RWM} (V)	V _{BR} (V)	I _T (mA)	V _C @1A	V _C		I _R μA (Max)	C (Pf) (Typ.)
						(Max)	(@A)		
SRV05-4WP6	LC0514P6	5	6	1	9	9	18	1	5

TYPIC CHARACTERIZATIONS

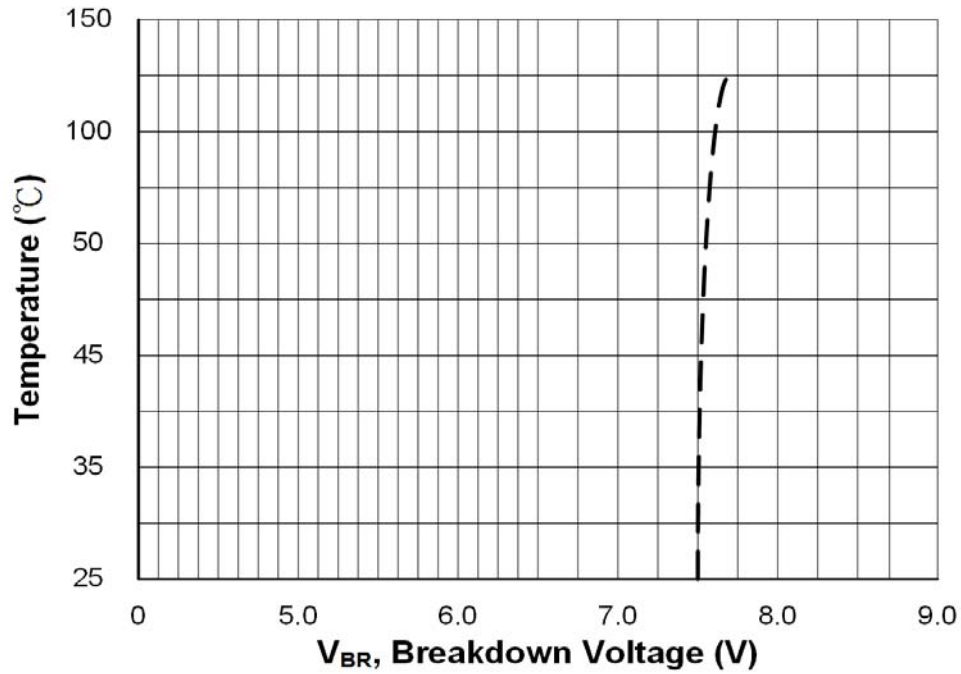


8x20μs Pulse Waveform

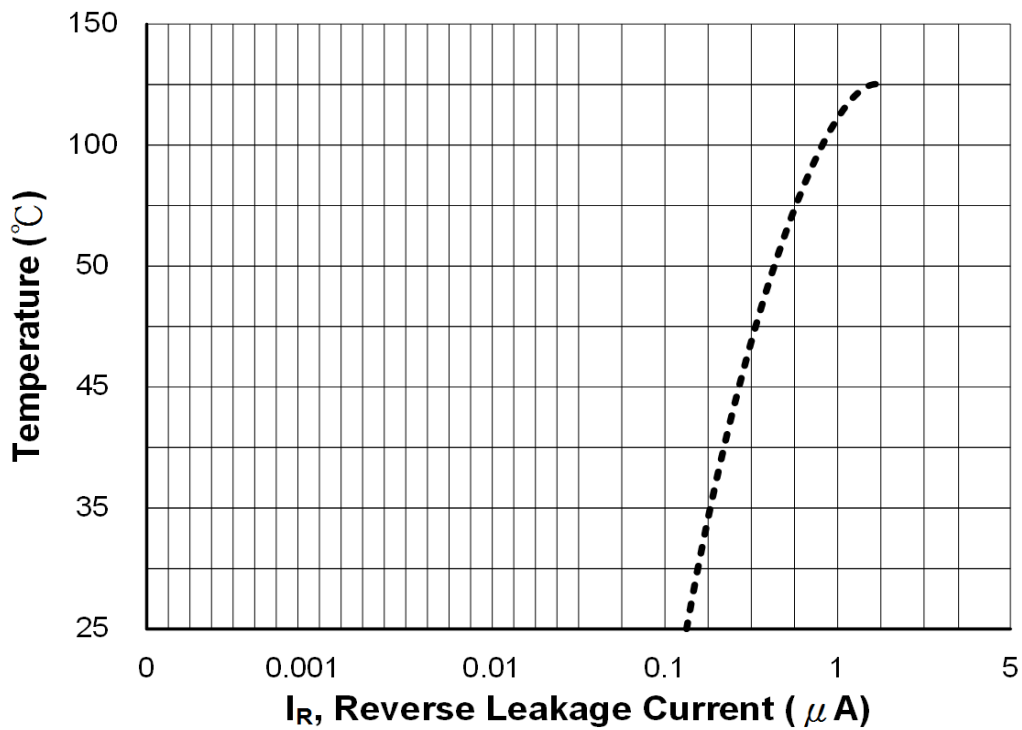
Power Derating Curve



TYPIC CHARACTERIZATIONS

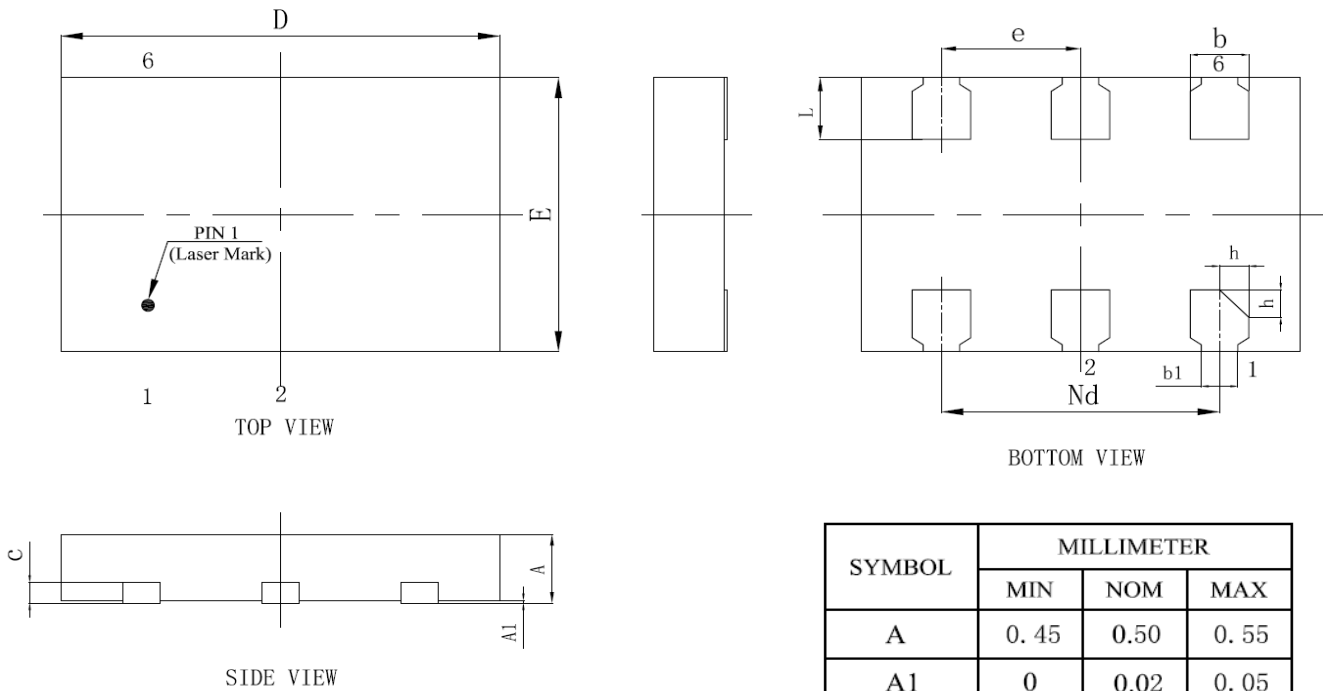


Typic Breakdown Voltage vs. Temperature



Typic Reverse Leakage vs. Temperature

DFN3020P6 PACKAGE OUTLINE & DIMENSIONS



SYMBOL	MILLIMETER		
	MIN	NOM	MAX
A	0.45	0.50	0.55
A1	0	0.02	0.05
b	0.30	0.40	0.50
b1	0.20	0.25	0.30
c	0.10	0.15	0.20
D	2.90	3.00	3.10
e	0.95BSC		
Nd	1.80	1.90	2.00
E	1.90	2.00	2.10
L	0.40	0.45	0.50
h	0.15	0.20	0.25