

ECN #	REV	DESCRIPTION	DRAWN	DATE	CHECKD	DATE	APPRVD	DATE
-	A	RELEASED	AMU	03/6/11	VEE	03/6/11		17/6/11

KL - 8



KL - 15



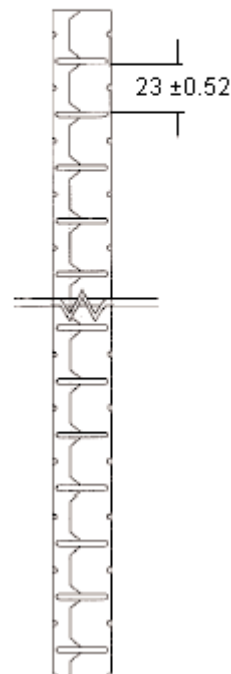
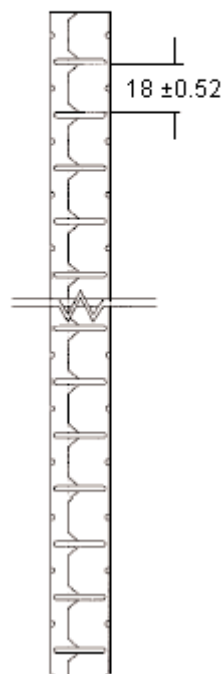
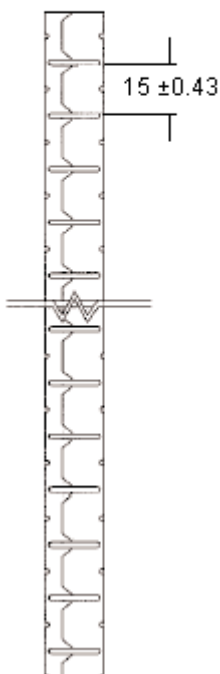
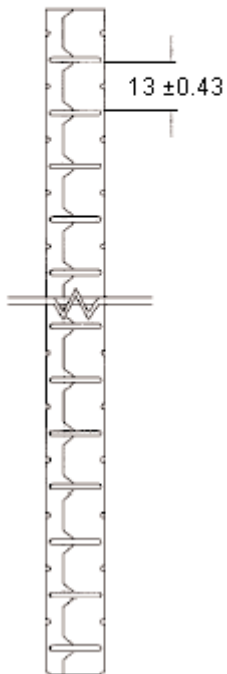
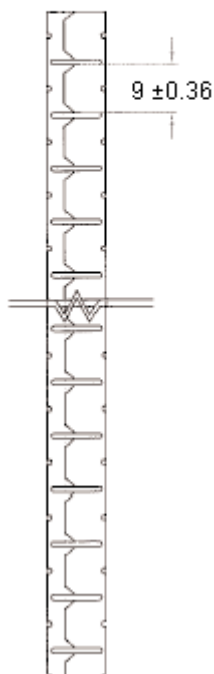
KL - 20



KL - 25



KL - 32



Dimensions : Millimetres

**Important Notice :** This data sheet and its contents (the "Information") belong to the members of the Premier Farnell group of companies (the "Group") or are licensed to it. No licence is granted for the use of it other than for information purposes in connection with the products to which it relates. No licence of any intellectual property rights is granted. The Information is subject to change without notice and replaces all data sheets previously supplied. The Information supplied is believed to be accurate but the Group assumes no responsibility for its accuracy or completeness, any error in or omission from it or for any use made of it. Users of this data sheet should check for themselves the Information and the suitability of the products for their purpose and not make any assumptions based on information included or omitted. Liability for loss or damage resulting from any reliance on the Information or use of it (including liability resulting from negligence or where the Group was aware of the possibility of such loss or damage arising) is excluded. This will not operate to limit or restrict the Group's liability for death or personal injury resulting from its negligence. Pro-POWER is the registered trademark of the Group. © Premier Farnell plc 2011.

**TOLERANCES:**

UNLESS OTHERWISE SPECIFIED, DIMENSIONS ARE FOR REFERENCE PURPOSES ONLY.

DRAWN BY:

AMU

CHECKED BY:

VEE

APPROVED BY:

DATE:

03/06/11

DATE:

03/06/11

DATE:

17/06/11

DRAWING TITLE:

**Cable Wrap**

SIZE  
**A**

DWG NO.

**P10002672**

ELECTRONIC FILE  
**4 - 9**

REV  
**A**

SCALE: NTS

U.O.M.: mm

SHEET: 1 OF 2

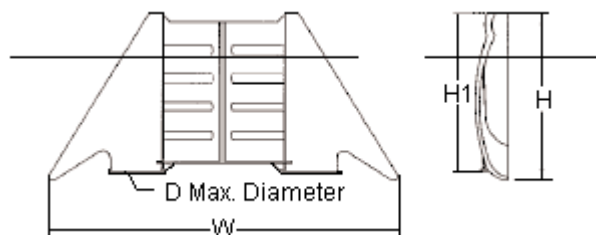
PART NO.

KL and KT Series

## REVISIONS

ECN #	REV	DESCRIPTION	DRAWN	DATE	CHECKD	DATE	APPRVD	DATE
-	A	RELEASED	AMU	03/6/11	VEE	03/6/11		17/6/11

## KT Type



W	H	H1	D	Part Number
92.3 ±1	43 ±0.6	40.4 ±0.6	8.5 ±0.25	KT8BK
125 ±2.5	59 ±0.6	56 ±0.6	15 ±0.35	KT15BK
172 ±2.5	72 ±1	68 ±1	22.5 ±0.45	KT20BK
179 ±2.5	80 ±1	75.7 ±1	26 ±0.45	KT25BK
197 ±2.5	83.5 ±1	81 ±1	27 ±0.45	KT32BK

Dimensions : Millimetres

## Part Number Table

Description	Part Number
Cable Wrap, 10mm, 5m	KL8BK
Cable Wrap, 16mm, 5m	KL15BK
Cable Wrap, 22mm, 5 m	KL20BK
Cable Wrap, 27mm, 5m	KL25BK
Cable Wrap, 35mm, 5m	KL32BK
Tool, Cable Wrap, 10mm	KT8BK
Tool, Cable Wrap, 16mm	KT15BK
Tool, Cable Wrap, 22mm	KT20BK
Tool, Cable Wrap, 27mm	KT25BK
Tool, Cable Wrap, 35mm	KT32BK

[www.element14.com](http://www.element14.com)
[www.farnell.com](http://www.farnell.com)
[www.newark.com](http://www.newark.com)
[www.cpc.co.uk](http://www.cpc.co.uk)

**Important Notice :** This data sheet and its contents (the "Information") belong to the members of the Premier Farnell group of companies (the "Group") or are licensed to it. No licence is granted for the use of it other than for information purposes in connection with the products to which it relates. No licence of any intellectual property rights is granted. The Information is subject to change without notice and replaces all data sheets previously supplied. The Information supplied is believed to be accurate but the Group assumes no responsibility for its accuracy or completeness, any error in or omission from it or for any use made of it. Users of this data sheet should check for themselves the Information and the suitability of the products for their purpose and not make any assumptions based on information included or omitted. Liability for loss or damage resulting from any reliance on the Information or use of it (including liability resulting from negligence or where the Group was aware of the possibility of such loss or damage arising) is excluded. This will not operate to limit or restrict the Group's liability for death or personal injury resulting from its negligence. Pro-POWER is the registered trademark of the Group. © Premier Farnell plc 2011.

## TOLERANCES:

UNLESS OTHERWISE SPECIFIED, DIMENSIONS ARE FOR REFERENCE PURPOSES ONLY.

DRAWN BY:

AMU

CHECKED BY:

VEE

APPROVED BY:

DATE:

03/06/11

DATE:

03/06/11

DATE:

17/06/11

DRAWING TITLE:

## Cable Wrap

SIZE	DWG NO.	ELECTRONIC FILE	REV
A	P10002672	4 - 9	A
SCALE: NTS		U.O.M.: mm	SHEET: 2 OF 2