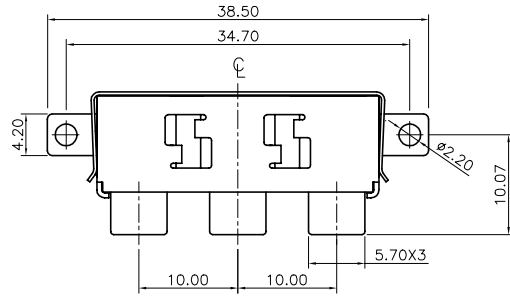


NOTE I :  
2557A-12 □□  
1



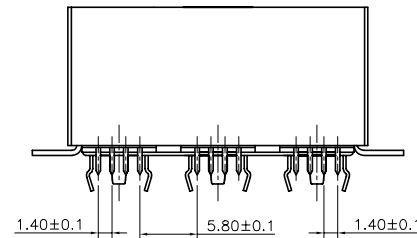
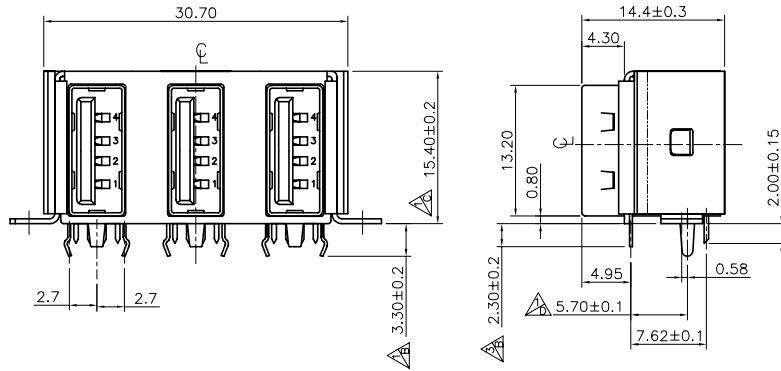
1. Plating  
 'G1,-05u" gold over nickel.  
 'G2,-Indicate gold flash.  
 'G3,-10u" gold over nickel.  
 'G4,-15u" gold over nickel.  
 'G5,-30u" gold over nickel.

- 2.AK□M2557-12  
 F = G1  
 G = G2  
 E = G3  
 D = G4  
 B = G5

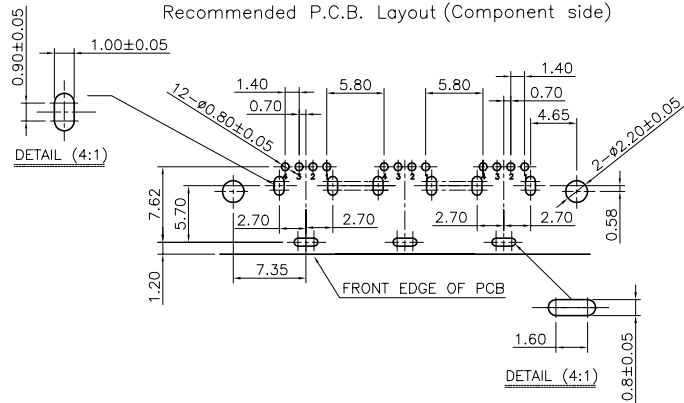
NOTE II :  
2557A-12 □□□  
1

1. Selective plating  
 'G1T,-05u" Min. gold in contact area/  
 100u" Min. Tin in solder area.  
 'G2T,-Gold flash in contact area/  
 100u" Min. Tin in solder area.  
 'G3T,-10u" Min. gold in contact area/  
 100u" Min. Tin in solder area.  
 'G4T,-15u" Min. gold in contact area/  
 100u" Min. Tin in solder area.  
 'G5T,-30u" Min. gold in contact area/  
 100u" Min. Tin in solder area.  
 'G6T,-50u" Min. gold in contact area/  
 100u" Min. Tin in solder area.

- 2.AK□M2557-12  
 S = G1T  
 U = G2T  
 R = G3T  
 Q = G4T  
 N = G5T  
 M = G6T



Recommended P.C.B. Layout (Component side)



		5.50±0.1			Angle	±2°
D					XX	±0.50
C	01/06/15	F-5	宋權哲	宋權哲	XX.X	±0.30
B	01/05/08	E-4,G-4,G-6,F-6	楊久德	蔡志鴻	XX.XX	±0.15
REV	DATE	DESCRIPTION	CHANGE	APPRO.	TOLERANCE TABLE	

MAT,L	LCP		<b>SUYIN</b> CONNECTOR			
COLOR	BLACK					
FINISH			CUSTOMER COPY	TITLE: USB A Series Three Port Vertical Dip Type		
DRAW	游千儀	00/07/10	A4	⊕	PART NO.	2557A-12GXX
DESIGN	游千儀	00/07/10	UNIT	mm	COMPUTER NO.	AK□M2557-12
CHECK	陳清照	00/07/10	SCALE	2:1	DRAWING NO.	2557A-12GXX
APPRO.	宋權哲	00/07/10				